



UvA-DARE (Digital Academic Repository)

Millennial-scale vegetation changes in the tropical Andes using ecological grouping and ordination methods

Urrego, D.H.; Hooghiemstra, H.; Rama-Corredor, O.; Martrat, B.; Grimalt, J.O.; Thompson, L.; Bush, M.B.; González-Carranza, Z.; Hanselman, J.; Valencia, B.; Velásquez-Ruiz, C.

Published in:
Climate of the Past

DOI:
[10.5194/cp-12-697-2016](https://doi.org/10.5194/cp-12-697-2016)

[Link to publication](#)

License
CC BY

Citation for published version (APA):
Urrego, D. H., Hooghiemstra, H., Rama-Corredor, O., Martrat, B., Grimalt, J. O., Thompson, L., Bush, M. B., González-Carranza, Z., Hanselman, J., Valencia, B., & Velásquez-Ruiz, C. (2016). Millennial-scale vegetation changes in the tropical Andes using ecological grouping and ordination methods. *Climate of the Past*, 12(3), 697-711. <https://doi.org/10.5194/cp-12-697-2016>

General rights

It is not permitted to download or to forward/distribute the text or part of it without the consent of the author(s) and/or copyright holder(s), other than for strictly personal, individual use, unless the work is under an open content license (like Creative Commons).

Disclaimer/Complaints regulations

If you believe that digital publication of certain material infringes any of your rights or (privacy) interests, please let the Library know, stating your reasons. In case of a legitimate complaint, the Library will make the material inaccessible and/or remove it from the website. Please Ask the Library: <https://uba.uva.nl/en/contact>, or a letter to: Library of the University of Amsterdam, Secretariat, Singel 425, 1012 WP Amsterdam, The Netherlands. You will be contacted as soon as possible.

Supplement of *Clim. Past*, 12, 697–711, 2016
<http://www.clim-past.net/12/697/2016/>
doi:10.5194/cp-12-697-2016-supplement
© Author(s) 2016. CC Attribution 3.0 License.



Climate
of the Past

Open Access

The logo for the European Geosciences Union (EGU), featuring the letters 'EGU' in a bold, sans-serif font, with a stylized gear or circular element behind the 'E'.

Supplement of

Millennial-scale vegetation changes in the tropical Andes using ecological grouping and ordination methods

Dunia H. Urrego et al.

Correspondence to: Dunia H. Urrego (d.urrego@exeter.ac.uk)

The copyright of individual parts of the supplement might differ from the CC-BY 3.0 licence.

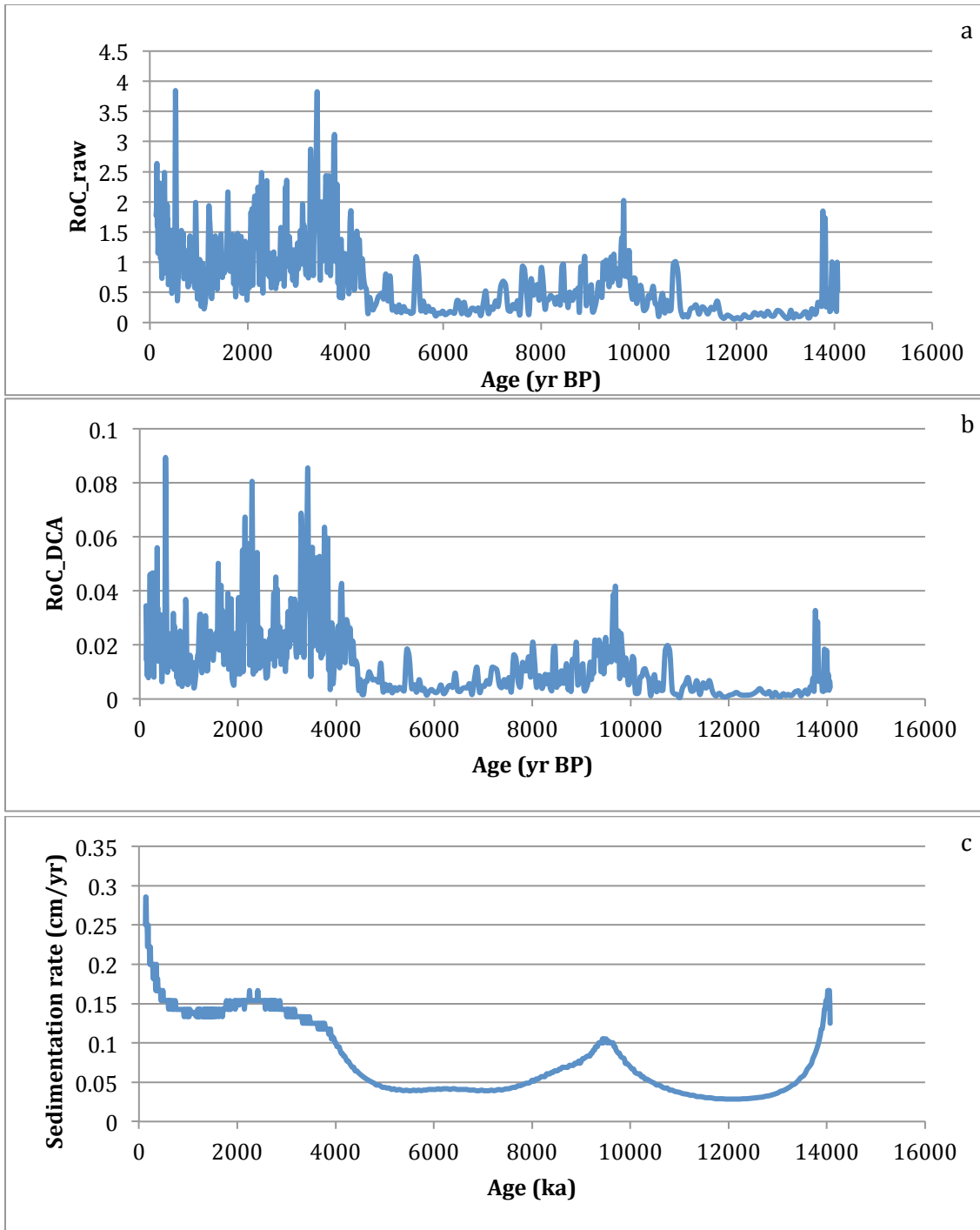


Figure S1. Rates of change (RoC) and sedimentation rate calculated for La Cocha record. a: RoC calculated based on Euclidean distance between subsequent samples using raw percentages, plotted against age. b: RoC calculated based on a Euclidean distance between the first four DCA axes, plotted against age. c: Sedimentation rate plotted against age.