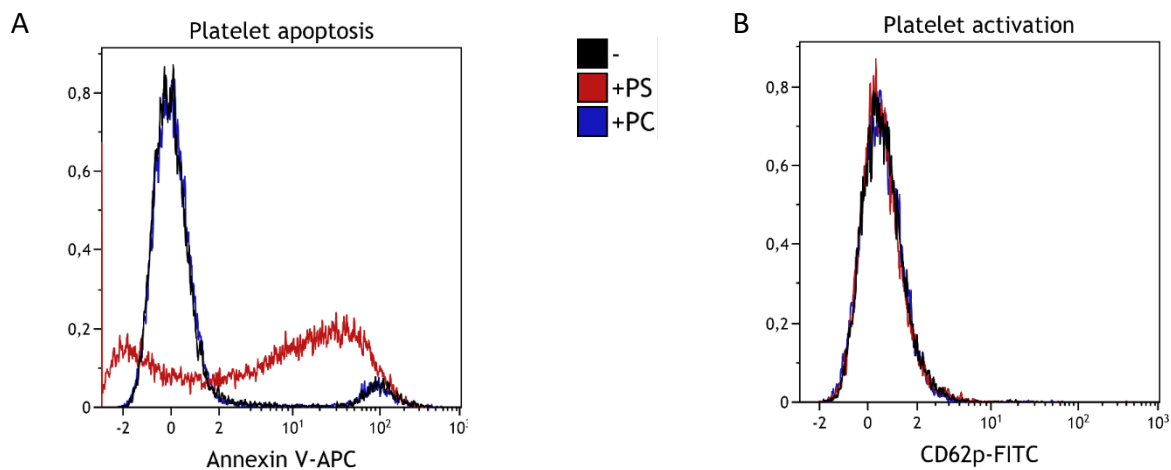


1
2
3
4
5
6
7
8
9
10
11
12
13
14



Supplemental figure 5: Effect of PS and PC on platelet activation and apoptosis. Freshly isolated platelets were incubated with 250 $\mu\text{g/ml}$ phosphatidylserine (PS) or phosphatidylcholine (PC) or left untreated (-). After 20 min incubation, annexin v binding (A) and CD62p expression (B) was determined using flow cytometry. Representative graphs from 4 individual experiments are depicted.