



UvA-DARE (Digital Academic Repository)

Economic Evaluation of Day Hospital Versus Intensive Outpatient Mentalization-Based Treatment Alongside a Randomized Controlled Trial With 36-Month Follow-Up

Blankers, M.; Smits, M.L.; Feenstra, D.J.; Horn, E.K.; Kamphuis, J.H.; Bales, D.L.; Lucas, Z.; Remeus, M.G.A.; Dekker, J.J.M.; Verheul, R.; Busschbach, J.J.V.; Luyten, P.

DOI

[10.1037/per0000577](https://doi.org/10.1037/per0000577)

Publication date

2023

Document Version

Final published version

Published in

Personality Disorders: Theory, Research, and Treatment

License

Article 25fa Dutch Copyright Act (<https://www.openaccess.nl/en/in-the-netherlands/you-share-we-take-care>)

[Link to publication](#)

Citation for published version (APA):

Blankers, M., Smits, M. L., Feenstra, D. J., Horn, E. K., Kamphuis, J. H., Bales, D. L., Lucas, Z., Remeus, M. G. A., Dekker, J. J. M., Verheul, R., Busschbach, J. J. V., & Luyten, P. (2023). Economic Evaluation of Day Hospital Versus Intensive Outpatient Mentalization-Based Treatment Alongside a Randomized Controlled Trial With 36-Month Follow-Up. *Personality Disorders: Theory, Research, and Treatment*, 14(2), 207–215. <https://doi.org/10.1037/per0000577>

General rights

It is not permitted to download or to forward/distribute the text or part of it without the consent of the author(s) and/or copyright holder(s), other than for strictly personal, individual use, unless the work is under an open content license (like Creative Commons).

Disclaimer/Complaints regulations

If you believe that digital publication of certain material infringes any of your rights or (privacy) interests, please let the Library know, stating your reasons. In case of a legitimate complaint, the Library will make the material inaccessible and/or remove it from the website. Please Ask the Library: <https://uba.uva.nl/en/contact>, or a letter to: Library of the University of Amsterdam, Secretariat, Singel 425, 1012 CP Amsterdam, The Netherlands. You will be contacted as soon as possible.

Economic Evaluation of Day Hospital Versus Intensive Outpatient Mentalization-Based Treatment Alongside a Randomized Controlled Trial With 36-Month Follow-Up

Matthijs Blankers^{1, 2, 3}, Maaïke L. Smits⁴, Dine J. Feenstra⁴, Eva K. Horn⁵, Jan Henk Kamphuis^{4, 6}, Dawn L. Bales⁴, Zwaan Lucas⁷, Melissa G. A. Remeëus⁴, Jack J. M. Dekker^{1, 8}, Roel Verheul⁹, Jan J. V. Busschbach^{4, 9}, and Patrick Luyten^{4, 10, 11}

¹ Department of Research, Arkin Mental Health Care, Amsterdam, the Netherlands

² Trimbos Institute, The Netherlands Institute of Mental Health and Addiction, Utrecht, the Netherlands

³ Amsterdam UMC, Location AMC, Department of Psychiatry, University of Amsterdam

⁴ De Viersprong, Viersprong Institute for Studies on Personality Disorders, Halsteren, the Netherlands

⁵ Parnassia Psychiatric Institute, Rotterdam, the Netherlands

⁶ Department of Psychology, University of Amsterdam

⁷ Lentis, Groningen, the Netherlands

⁸ Department of Clinical Psychology, Vrije Universiteit Amsterdam

⁹ Department of Psychiatry, Section Medical Psychology and Psychotherapy, Erasmus MC, Rotterdam, the Netherlands

¹⁰ Faculty of Psychology and Educational Sciences, University of Leuven

¹¹ Research Department of Clinical, Educational and Health Psychology, University College London

Mentalization-based treatment (MBT) has demonstrated robust effectiveness in the treatment of borderline personality disorder (BPD) in both day-hospital (MBT-DH) and intensive outpatient MBT (MBT-IOP) programs. Given the large differences in intensity and associated treatment costs, there is a need for studies comparing their cost-effectiveness. A health economic evaluation of MBT-DH versus MBT-IOP was performed alongside a multicenter randomized controlled trial with a 36-month follow-up. In three mental health-care institutions in the Netherlands, 114 patients were randomly allocated to MBT-DH ($n = 70$) or MBT-IOP ($n = 44$) and assessed every 6 months. Societal costs were compared with quality-adjusted life years (QALYs) gained and the number of months in remission over 36 months. The QALY gains over 36 months were 1.96 ($SD = .58$) for MBT-DH and 1.83 ($SD = .56$) for MBT-IOP; the respective number of months in remission were 16.0 ($SD = 11.5$) and 11.1 ($SD = 10.7$). Societal costs were €106,038 for MBT-DH and €91,368 for MBT-IOP. The incremental cost for one additional QALY with MBT-DH compared with MBT-IOP was

This article was published Online First June 30, 2022.

Maaïke L. Smits  <https://orcid.org/0000-0001-7239-5222>

Eva K. Horn is now at ErasmusMC, Rotterdam, the Netherlands. Dawn L. Bales is now at GGZ Breburg, Breda, the Netherlands and Stichting MBT-Expertise Nederland, the Netherlands. Roel Verheul is now at Korian Nederland, the Netherlands.

Matthijs Blankers and Maaïke L. Smits are joint first authors.

This work was supported in part by a grant from ZonMw (Grant 171202012). The funder of the study had no role in the study design, data collection, data analysis, data interpretation, or writing of the report. The authors thank all research assistants for collecting the data. The authors are also most grateful to the patients who participated in this study. Patrick Luyten and Dawn L. Bales have been involved in the training and dissemination of mentalization-based treatment. The other authors declare that they have no competing interests. Data and code are not publicly available. All data requests should be submitted to Maaïke L. Smits for consideration. Access to coded data and code might be granted following such requests depending on purpose.

Matthijs Blankers served as lead for formal analysis and methodology. Maaïke Lisette Smits served as lead for project administration and investigation and served in a supporting role for formal analysis and methodology. Dine J. Feenstra served in a supporting role for project administration, conceptualization, funding acquisition, investigation,

methodology, and writing – original draft. Eva K. Horn served in a supporting role for formal analysis, methodology, and writing – review and editing. Jan Henk Kamphuis served in a supporting role for investigation. Dawn L. Bales served in a supporting role for funding acquisition. Zwaan Lucas served in a supporting role for investigation. Melissa G.A. Remeëus served in a supporting role for data curation and investigation. Jack J. M. Dekker served in a supporting role for investigation. Roel Verheul served in a supporting role for funding acquisition and served in a supporting role for methodology. Patrick Luyten served in a supporting role for funding acquisition. Matthijs Blankers, Maaïke Lisette Smits, and Eva K. Horn contributed equally to data curation. Matthijs Blankers and Maaïke Lisette Smits contributed equally to writing – original draft. Matthijs Blankers, Maaïke Lisette Smits, Dine J. Feenstra, Jan Henk Kamphuis, Dawn L. Bales, Zwaan Lucas, Melissa G.A. Remeëus, Jack J. M. Dekker, Roel Verheul, Jan J. V. Busschbach, and Patrick Luyten contributed equally to writing – review and editing. Dawn L. Bales contributed to supervision.

Correspondence concerning this article should be addressed to Maaïke L. Smits, De Viersprong, Viersprong Institute for Studies on Personality Disorders, P.O. Box 7, 4660 AA Halsteren, the Netherlands. Email: maaïke.smits@deviersprong.nl

€107,000. The incremental cost for 1 month in remission was almost €3000. Assuming a willingness-to-pay threshold of €50,000 for a QALY, there was a 33% likelihood that MBT-DH is more cost-effective than MBT-IOP in terms of costs per QALY. Although MBT-DH leads to slightly more QALYs and remission months, it is probably not cost-effective when compared with MBT-IOP for BPD patients, as the small additional health benefits in MBT-DH did not outweigh the substantially higher societal costs.

Keywords: economic evaluation, mentalization-based-treatment, borderline personality disorder, randomized controlled trial, adult

Supplemental materials: <https://doi.org/10.1037/per0000577.supp>

Borderline personality disorder (BPD) is one of the most prevalent mental disorders in psychiatric populations (Leichsenring et al., 2011; Paris, 2010) and is associated with high psychiatric comorbidity (Barrachina et al., 2011; Skodol et al., 1999; Trull, 2000; Zanarini et al., 1998), poor quality of life (Soeteman et al., 2008), and high societal costs (Laurensen et al., 2016; Soeteman et al., 2008). Previous studies and systematic reviews have provided evidence for the cost-effectiveness of a number of treatments for BPD (Meuldijk et al., 2017; Stevenson & Meares, 1999).

Mentalization-based treatment (MBT) is an empirically supported treatment for BPD based on the assumption that key features of BPD such as impulsivity, affect dysregulation, and problems with interpersonal relationships are related to impairments in mentalizing, that is, the ability to understand oneself and others in terms of mental states (e.g., needs, thoughts, feelings, wishes, and desires) (Bateman & Fonagy, 2016; Cristea et al., 2017; Storebø et al., 2020). Two types of MBT for adult BPD patients have been developed and empirically evaluated: day-hospital MBT (MBT-DH; Bales et al., 2012, 2015; Bateman & Fonagy, 1999, 2001, 2008; Laurensen et al., 2018) and intensive outpatient MBT (MBT-IOP; Bateman & Fonagy, 2009; Jørgensen et al., 2013, 2014; Kvarstein et al., 2015). MBT-DH and MBT-IOP are similar in duration, with treatment lasting up to 18 months. Whereas both treatments offer weekly individual psychotherapy sessions, they differ markedly in the intensity of group psychotherapy. MBT-DH consists of a 5 days per week day-hospitalization program, which includes nine group therapy sessions per week. MBT-IOP is a 2-day outpatient program offering two group therapy sessions per week. The cost-effectiveness of MBT-DH has previously been compared with “specialized treatment as usual” (S-TAU), which comprised an outpatient treatment tailored to the individual needs of patients with BPD, offered by a well-established treatment service. MBT-DH was not cost-effective compared with S-TAU in analyses focusing on quality-adjusted life years (QALYs) as the outcome but was more cost-effective than S-TAU in analyses using BPD remission as the outcome (Blankers et al., 2019). There has never been a formal cost-effectiveness comparison of MBT-DH and MBT-IOP, which is urgently needed considering the large differences in the intensity and associated treatment costs of the two interventions.

Here, we report the first long-term health economic evaluation of MBT-DH versus MBT-IOP alongside a randomized controlled trial (RCT) comparing their effectiveness at 36-month follow-up (Smits et al., 2019, 2020). We compared health-care utilization and other societal costs with effects in terms of quality-adjusted life years (QALYs) gained and the number of months in remission over 36 months. Given that MBT-DH and MBT-IOP did not differ in terms of effectiveness (Smits et al., 2019, 2020), but the cost of MBT-DH

could be substantially larger than that of MBT-IOP, we expected that the greater benefits of MBT-DH would not outweigh the lower costs of MBT-IOP and that MBT-DH would not be more cost-effective than MBT-IOP.

Method

Study Design, Participants, Randomization, and Assessments

The design of the RCT has been fully described in the study protocol (Laurensen et al., 2014). The study was registered in the Netherlands trial register, no. NTR2292.¹ Participants were patients diagnosed with BPD as assessed using the Structured Clinical Interview for *Diagnostic and Statistical Manual of Mental Disorders, Fourth Edition*, Axis II Personality Disorders (First et al., 1996), referred to one of three participating mental health-care treatment sites in the Netherlands, who met inclusion criteria and provided written informed consent. All participants were randomly assigned to MBT-DH or MBT-IOP. Patients were assessed before randomization, at the start of treatment, and then every 6 months up to 36 months after the start of treatment.

The study protocol was approved by the Medical Ethical Committee of Erasmus Medical Center, Rotterdam, the Netherlands (NL38571.078.12). For the design and reporting of this economic evaluation, we followed the Consolidated Health Economic Evaluation Reporting Standards statement (Husereau et al., 2013) and the International Society for Pharmacoeconomics and Outcomes Research guideline for economic evaluation alongside RCTs (Ramsey et al., 2015).

Interventions

Both treatment programs focus on improving BPD patients' capacity for mentalizing (Bateman & Fonagy, 2004, 2016) and consist of a pretreatment phase and a main treatment phase. The pretreatment phase focuses on engaging patients in treatment and crisis management by means of individual sessions and a 12-session psycho-education group. The main treatment phase comprises weekly individual psychotherapy sessions, individual crisis management, and psychiatric consultation upon request, following American Psychiatric Association guidelines. The intensity of group therapy

¹ Preregistration of the economic evaluation has been included in the protocol paper; <https://bmcp psychiatry.biomedcentral.com/articles/10.1186/s12888-014-0301-0>.

during the main treatment phase differs markedly between the two programs. MBT-IOP involves two group therapy sessions per week, whereas MBT-DH entails a day-hospital program 5 days a week for 6 hr per day, including nine group therapy sessions per week, comprising daily group psychotherapy, twice-weekly art therapy, and weekly mentalizing cognitive group therapy and writing therapy, ending each week with a social hour and a community meeting. After the main treatment phase, individually tailored stepped-down care is offered in both programs, aimed at relapse prevention, maintaining and further enhancing mentalizing skills, and stimulating social reintegration.

Outcomes

Resource Use and Valuation

Health-care utilization, use of medication, and productivity gains or losses were measured using the first section of the Trimbos Questionnaire for Costs associated with Psychiatric illness (TiC-P; Hakkaart-van Roijen et al., 2002), a well-validated instrument for economic evaluations among psychiatric patient populations (Bouwman et al., 2013). The TiC-P has a 4-week recall period, which was linearly extrapolated to cover the full period between the consecutive interviews, in line with Hakkaart-van Roijen et al. (2007). All health-care contacts were estimated using the TiC-P, except MBT-IOP- or MBT-DH-related contacts, which were collected from the patient records. Health-care resource utilization was valued using standard unit cost prices for the Health Care Insurance Board Netherlands (Healthcare Institute Netherlands, 2016; Zwaap et al., 2016). Medication costs were valued based on reported medication use. Unit costs per dose of medication were extracted from <https://medicijnkosten.nl>.

The Short Form-Health and Labour Questionnaire (Hakkaart-van Roijen & Bouwman, 2010) was used to assess whether participants had worked in the previous 2 weeks, and whether they had been absent from work (absenteeism) or functioned professionally less well than normal due to illness (presenteeism). Productivity losses in hours were multiplied by the average hourly labor costs of €37.90 for men and €31.60 for women (Zwaap et al., 2016). Productivity losses were valued using the friction cost method, with a maximum friction costs period of 85 days, based on Health Care Insurance Board data (Zwaap et al., 2016) and an elasticity factor of .8 (Koopmanschap et al., 1995).

All future costs from the date of randomization were discounted at an annual rate of 4% (Zwaap et al., 2016). Dutch unit prices were converted to Organisation for Economic Cooperation and Development standard purchasing power parities for the study's index year 2018 (106% for the Netherlands) (Organisation for Economic Co-operation & Development, 2019).

Effect Measures

The number of QALYs gained between randomization and 36-month follow-up was the outcome measure for the cost-utility analysis. We used the EuroQol five-dimensional, three-level quality of life instrument (EQ-5D; EuroQol Group, 1990). The EQ-5D is often used as the primary outcome measure in cost-effectiveness analyses, as the EQ-5D is the prescriptive quality-of-life questionnaire in the Dutch national guideline for economic evaluations in health care (Healthcare Institute Netherlands, 2016). Using the

Dutch EQ-5D tariff (Lamers et al., 2006), raw scores were converted to health utilities. Using the area under the curve method with linear interpolation, the repeated measures of these health utilities were integrated into the number of QALYs gained or lost over the 36-month follow-up period. Future QALYs were discounted at an annual rate of 1.5% (Zwaap et al., 2016). The outcome measure for the cost-effectiveness analysis was the proportion of patients having a Personality Assessment Inventory–Borderline (PAI-BOR) score <38, multiplied by the number of months when this was the case. Scores on the PAI-BOR range between 0 and 72, with scores of 38 or higher indicating the presence of significant BPD pathology (Morey, 1991).

Statistical Analyses

All analyses were performed on an intention-to-treat basis using R Version 3.5+. Baseline differences between MBT-IOP and MBT-DH were tested using two-tailed chi-square tests and independent samples *t* tests. Missing observations in costs and effects data were handled using multiple imputation using chained equations (mice Version 2.30; van Buuren & Groothuis-Oudshoorn, 2011). Fifty imputations were generated for each missing observation. We used predictive mean matching to impute missing data as this is the preferred method for skewed (cost) data (Marshall et al., 2010). Missing data were assumed to be missing at random. The analyses on the 50 imputed data sets were combined using Rubin's rules (Rubin, 1987).

The base case scenario of this economic evaluation was performed from the societal perspective in which all available costs—BPD treatment costs, medication costs, all other health-care costs, and losses or gains in productivity for each patient—were included. In addition, we performed an analysis from the health-care sector perspective, in which BPD treatment costs, medication costs, and all other health-care costs were included, but productivity costs were omitted.

For all participants, we multiplied units of health care and productivity losses with their associated costs. Differences in costs and effects between MBT-IOP and MBT-DH were calculated as the difference in cumulative costs and effects over 36 months.

Next, we extracted a total of 5000 nonparametric bootstrapped samples from the imputed data (100 samples from each of the 50 imputed data sets), with a number of patients per trial arm equal to the number of patients in the original data set. For each bootstrapped sample, we calculated the incremental costs, incremental effects, and incremental cost-effectiveness ratio (ICER). The ICER was calculated as follows: $ICER = (Costs_{DH} - Costs_{IOP}) / (Effects_{DH} - Effects_{IOP})$, where effects were either QALYs or months in remission based on PAI-BOR scores. These data were also plotted on cost-effectiveness planes, which present the differences in costs and effects between MBT-DH and MBT-IOP on two dimensions by plotting costs against effects. The reference intervention (MBT-IOP) is positioned in the origin of the cost-effectiveness plane. Based on the distribution of the ICERs over the cost-effectiveness plane, cost-effectiveness acceptability curves (CEACs; Van Hout et al., 1994) were drawn. CEACs show the probability that MBT-DH is more cost-effective than MBT-IOP as a function of the willingness to pay for one additional QALY or one additional month in remission. Willingness to pay

can be up to €50,000 per QALY in the Netherlands for an intermediate burden of disease, such as BPD (Zwaap et al., 2016).

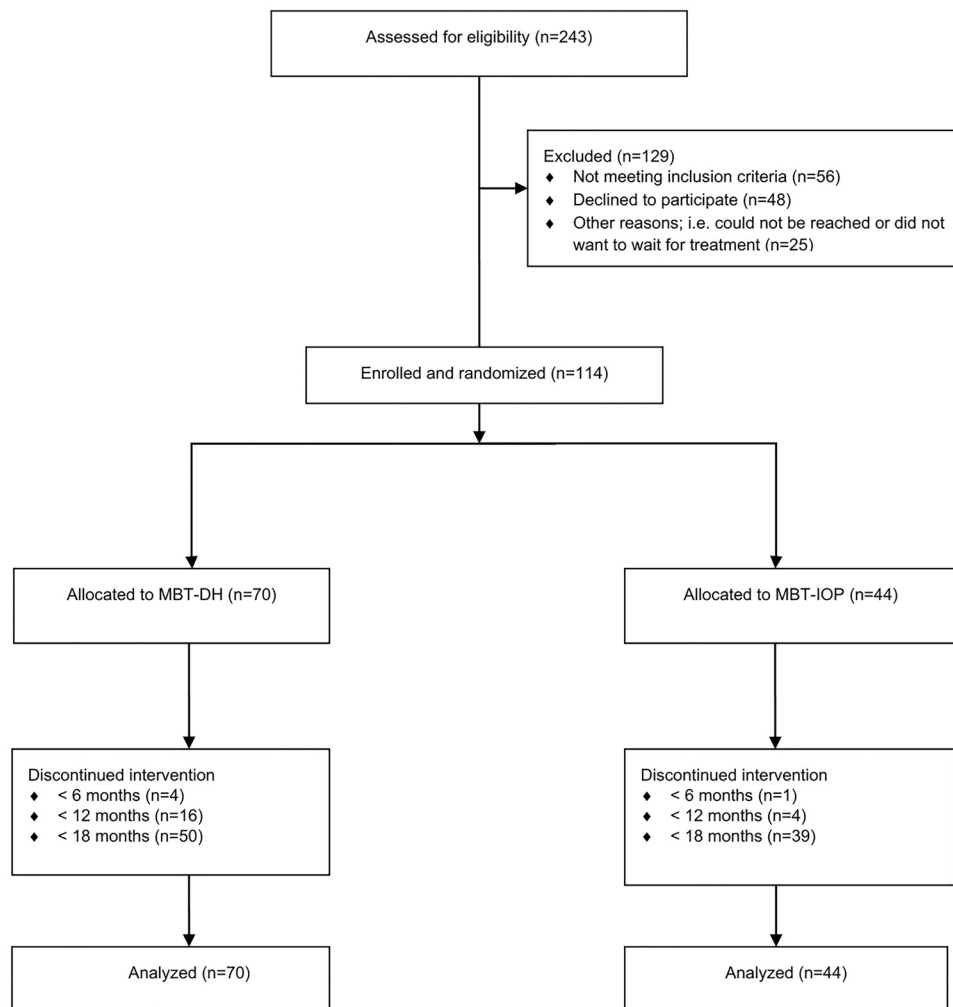
To assess the robustness of findings, one-way sensitivity analyses were performed to evaluate the impact on the ICERs of a mis-specification of -20% to $+20\%$ in the aforementioned cost categories for the base case scenario.

Results

Between March 1, 2009, and June 30, 2014, 243 patients were referred to MBT in the participating treatment centers, of whom 114 patients were randomly assigned to MBT-DH ($n = 70$) or MBT-IOP ($n = 44$) and included in the analysis (see Figure 1 for the CONSORT flowchart). The skewed distribution is due to an adjustment in the randomization algorithm, as during the trial it became clear that there were more available treatment places in the MBT-DH condition as a consequence of insufficient capacity of alternative treatment programs at the

treatment sites for patients who refused to participate in the trial or those who were excluded. This resulted in those patients taking up available places in the MBT-IOP treatment program. The trial steering committee suggested and agreed to adjust the randomization algorithm to prevent ethically unacceptable long waiting periods while still assuring random allocation. Further details of the inclusion and randomization procedures are described elsewhere (Smits et al., 2019). None of the baseline clinical characteristics or costs differed significantly between the treatment groups at baseline (Table 1). The proportion of missing data increased somewhat with each follow-up, ranging from 53% to 58%. No difference between MBT-IOP and MBT-DH was found in terms of the number of patients who completed at least one follow-up assessment: $n = 27$ (61%) for MBT-IOP and $n = 42$ (60%) for MBT-DH, $\chi^2(1) = .021$, $p = .885$. There were no significant baseline differences between patients who completed a follow-up assessment and those who did not (Smits et al., 2020).

Figure 1
CONSORT Flow Diagram



Note. MBT-IOP = intensive outpatient mentalization-based treatment; MBT-DH = day-hospital mentalization-based treatment.

Table 1
Baseline Characteristics and Costs

	MBT-DH (n = 70) M (SD)	MBT-IOP (n = 44) M (SD)
Age	31.4 (10.6)	29.9 (9.2)
PAI-BOR total	46.9 (9.59)	48.7 (9.90)
EQ-5D	0.50 (0.28)	0.44 (0.29)
	n (%)	n (%)
Female	59 (84)	35 (80)
Educational level		
Low	5 (8)	1 (3)
Medium	41 (61)	21 (53)
High	21 (31)	18 (45)
No vocational/volunteer activity	56 (88)	28 (74)
Criminal record	53 (82)	38 (93)
At least one symptom disorder	57 (81)	35 (80)
Mood disorder	40 (57)	25 (57)
Substance use disorder	26 (37)	15 (34)
Anxiety disorder	35 (50)	17 (39)
Eating disorder	11 (16)	11 (25)
At least one comorbid personality disorder	23 (33)	17 (39)
Cost in 6 months before randomization	M (SD) (€)	M (SD) (€)
Productivity costs	4,087 (14,112)	4,415 (12,595)
Health-care costs	13,940 (22,547)	15,643 (28,356)

Note. MBT-IOP = intensive outpatient mentalization-based treatment; MBT-DH = day-hospital mentalization-based treatment; PAI-BOR = Personality Assessment Inventory - Borderline; EQ-5D = Euroqol 5-dimensional.

Costs

Table 2 shows the cumulative societal costs and effects during the trial. Over 36 months of follow-up, the health-care costs were higher for MBT-DH than for MBT-IOP but not beyond the 95% confidence interval (CI): bootstrapped mean difference €21,109; 95% CI [-323, 41,328]. The productivity costs were not significantly lower for MBT-DH: bootstrapped mean difference €-5913; 95% CI [-20,553, 7568]. The overall societal costs were not significantly

Table 2
Cumulative Mean Costs and Effects of MBT-DH and MBT-IOP

Time	Group	Productivity costs M (SD) (€)	Health-care costs M (SD) (€)	Societal costs M (SD) (€)	QALYs M (SD)	Remission months M (SD)
Baseline	MBT-DH	3,789 (13,440)	13,691 (24,031)	17,480 (27,687)	0.00 (0.00)	0.00 (0.00)
Baseline	MBT-IOP	5,238 (14,044)	16,293 (29,160)	21,531 (36,084)	0.00 (0.00)	0.00 (0.00)
Start treatment	MBT-DH	5,408 (15,399)	34,272 (36,449)	39,680 (39,901)	0.18 (0.15)	0.61 (1.51)
Start treatment	MBT-IOP	8,052 (18,113)	27,686 (33,324)	35,738 (41,821)	0.19 (0.15)	0.60 (1.54)
6 months	MBT-DH	8,848 (23,966)	52,710 (41,190)	61,557 (47,896)	0.45 (0.23)	1.78 (3.15)
6 months	MBT-IOP	9,886 (20,737)	38,328 (41,007)	48,215 (49,504)	0.45 (0.22)	1.45 (2.86)
12 months	MBT-DH	9,819 (25,186)	66,162 (44,662)	75,982 (51,671)	0.73 (0.31)	3.93 (5.03)
12 months	MBT-IOP	13,333 (27,659)	47,629 (48,844)	60,962 (59,184)	0.72 (0.29)	2.72 (4.35)
18 months	MBT-DH	11,279 (26,822)	72,396 (47,123)	83,675 (55,080)	1.04 (0.39)	6.54 (6.46)
18 months	MBT-IOP	14,843 (29,003)	52,755 (50,231)	67,598 (60,845)	1.00 (0.36)	4.34 (5.79)
24 months	MBT-DH	12,805 (28,567)	78,644 (50,210)	91,449 (59,313)	1.35 (0.45)	9.35 (8.20)
24 months	MBT-IOP	17,803 (33,073)	59,082 (52,702)	76,885 (64,504)	1.27 (0.43)	6.29 (7.34)
30 months	MBT-DH	14,889 (31,050)	83,943 (53,033)	98,832 (63,993)	1.66 (0.51)	12.57 (9.91)
30 months	MBT-IOP	20,182 (36,812)	63,832 (55,466)	84,014 (68,803)	1.54 (0.50)	8.46 (9.05)
36 months	MBT-DH	16,816 (33,544)	89,221 (56,175)	106,038 (68,548)	1.96 (0.58)	16.01 (11.46)
36 months	MBT-IOP	22,991 (39,932)	68,377 (57,003)	91,368 (72,590)	1.83 (0.56)	11.06 (10.71)

Note. QALY = quality-adjusted life year; MBT-IOP = intensive outpatient mentalization-based treatment; MBT-DH = day-hospital mentalization-based treatment; QALYs = Quality adjusted Life-Years.

higher in MBT-DH: bootstrapped mean difference €15,138; 95% CI [-11,695, 39,722].

Effects

The number of QALYs at 36-month follow-up was not significantly higher in MBT-DH than in MBT-IOP: bootstrapped mean difference .14; 95% CI [-0.07, 0.34]. However, the cumulative number of months in remission based on the PAI-BOR cutoff criterion from baseline to 36-month follow-up was significantly higher in MBT-DH compared with MBT-IOP: bootstrapped mean difference 4.87; 95% CI [0.78, 8.91]. A plot of the costs and effects between baseline and 36-month follow-up is provided in Figure S1 in the online supplemental materials.

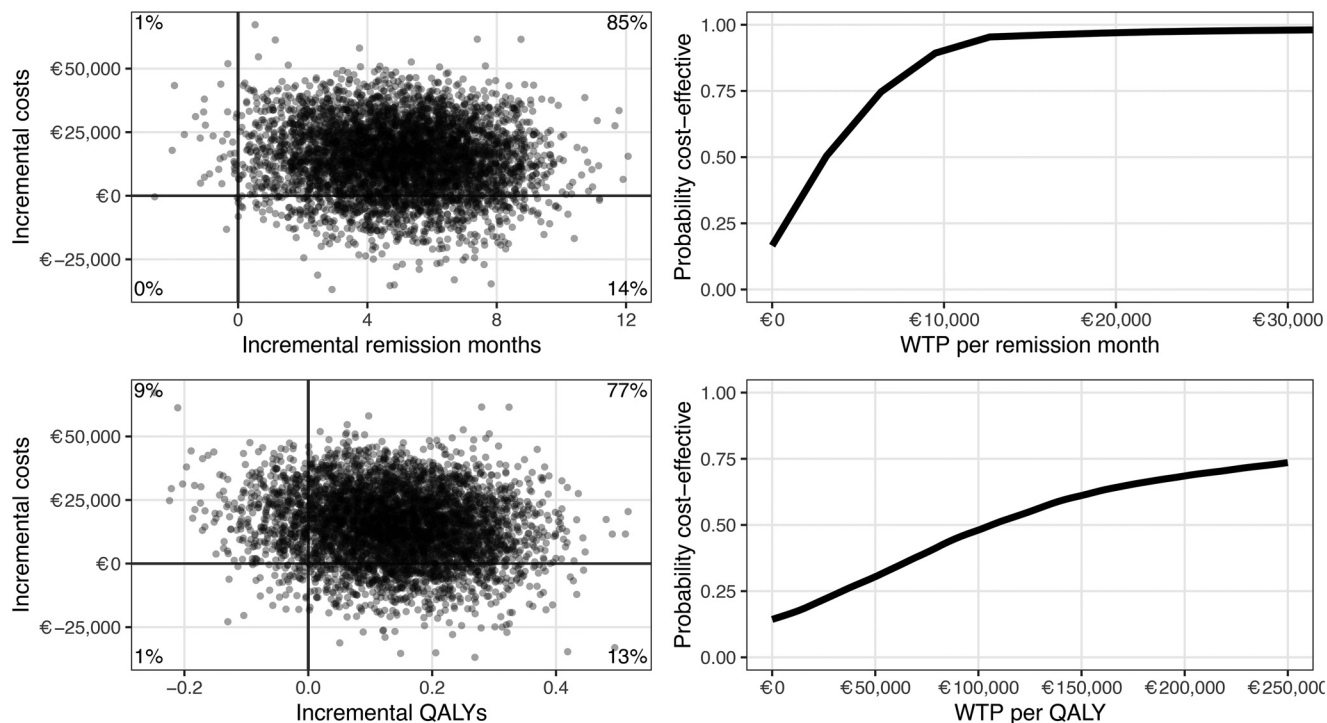
Cost-Utility

With regard to QALYs as the outcome measure, the high density of dots (77%) in the upper right quadrant of the cost-effectiveness planes indicates the likelihood that MBT-DH produces better effects against higher costs (Figure 2). Whether these additional costs are spent in a cost-effective way depends on the willingness to pay. If one is not willing to incur additional expense, the chance that MBT-DH is a cost-effective intervention compared with MBT-IOP is 13%. When the willingness to pay is defined as the suggested maximum amount of €50,000 per QALY, the likelihood that MBT-DH is a cost-effective intervention compared with MBT-IOP is 33%. The 50% probability of MBT-DH being cost-effective is reached at a willingness to pay of €107,000 per QALY, which is by definition also the ICER of MBT-DH versus MBT-IOP. When only health-care costs are taken into account, the ICER for one additional QALY is almost €150,000 (Table 3).

Cost-Effectiveness

In terms of costs per remission month the ICER is almost €3000, indicating that an extra month in remission with MBT-DH in comparison with MBT-IOP costs €3000. It is unlikely that

Figure 2
Cost-Effectiveness Planes and Cost-Effectiveness Acceptability Curves From the Societal Perspective



Note. MBT-IOP = intensive outpatient mentalization-based treatment; MBT-DH = day-hospital mentalization-based treatment. The two graphs on the left are cost-effectiveness planes. The horizontal axis indicates differences in health gains between MBT-DH and MBT-IOP over 36 months, and the vertical axis represents differences in costs. The chart area is divided into quadrants, each with a specific interpretation. Incremental cost-effectiveness ratios that fall into the upper right (“north-east”) quadrant indicate that MBT-DH generated better health at additional costs; the lower left (“south-west”) quadrant indicates less health gains for MBT-DH than MBT-IOP at lower costs (also labeled cost-saving). In the upper left (“north-west”) quadrant, MBT-DH is dominated by MBT-IOP, as fewer health gains are obtained at higher costs for MBT-DH compared with MBT-IOP. In the lower right (“south-east”) quadrant, MBT-DH dominates IOP, with more health gains against lower costs. The two plots on the right are cost-effectiveness acceptability curves. These curves show the probability that MBT-DH is more cost-effective than MBT-IOP as a function of the willingness to pay for one additional unit of effect (one additional quality-adjusted life year or one additional month of borderline personality disorder remission). The probability 0.50 on the vertical axis indicates the point of indifference. Above this indifference point, MBT-DH has a better likelihood of being preferred over MBT-IOP with regard to cost-effectiveness (with a likelihood equal to the probability on the vertical axis). As the willingness to pay per unit of effect is generally an unknown quantity, it is presented as a series of increments on the horizontal axis.

MBT-DH produces better effects against lower costs, as the lower right quadrant of the cost per QALY graph contains only 14% of the dots. In the scenario where only health-care costs are taken into account and productivity costs are ignored, the ICER per additional month in remission with MBT-DH is almost €4200 (Table 3). The cost-effectiveness planes and CEACs for this analysis are provided in Figure S2 in the online supplemental materials.

Sensitivity analyses assuming misspecification of the cost drivers of the model yielded a similar pattern of findings for both outcomes: if health-care costs were higher or productivity costs were lower than calculated in the base case model, the ICERs would have been higher and MBT-DH would have been less cost-effective. If health-care costs were lower or productivity costs were higher than calculated in the base case model, ICERs would have been lower and

Table 3
Cost, Remission Months per Patient, QALYs, and ICERs (MBT-DH Relative to MBT-IOP) Between Baseline and 36-Month Follow-up

Perspective/Analysis	MBT-DH (n = 70)			MBT-IOP (n = 44)			ICER	
	Costs (€)	Months in remission	QALYs	Costs (€)	Months in remission	QALYs	€ per month in remission	€ per QALY
Health-care sector perspective	88,860	16.0	1.97	68,014	11.0	1.83	4,166	149,411
Societal perspective	105,799	16.0	1.97	90,922	11.0	1.83	2,986	107,124

Note. Slight variations appear between this table and Table 2 owing to random bootstrapping error. QALYs = quality-adjusted life years; ICERs = incremental cost-effectiveness ratios; MBT-DH = day-hospital mentalization-based treatment; MBT-IOP = intensive outpatient mentalization-based treatment.

MBT-DH would have been more cost-effective (Figure S3 in the online supplemental materials).

Discussion

Main Findings and Reflection

From a cost-utility perspective, MBT-DH becomes preferable to MBT-IOP only at a willingness to pay of a minimum of €107,000, which is more than twice the suggested maximum amount of €50,000 per QALY for patients with an intermediate burden of disease, such as BPD patients. From a cost-effectiveness perspective, MBT-DH likely becomes preferable to MBT-IOP at a willingness to pay of €3000 or more for each additional month in remission from BPD.

Willingness to pay for a QALY has been normed in the Netherlands (Zwaap et al., 2016), rendering the cost per QALY value interpretation fairly straightforward. Typically, willingness-to-pay norms do not exist for units of effect, in this case cost per month in remission, as then a normative discussion would have to be repeated for every effect included in a cost-effectiveness study. However, some benchmark numbers may serve to put the present cost-effectiveness data into perspective. For instance, the annualized estimated price for an additional year of remission from BPD from this study ($€3000 \times 12 \text{ months} = €36,000$) exceeds the annualized average societal costs of patients with BPD of approximately €15,000 per year reported by studies in the Netherlands (Laurensen et al., 2016; Soeteman et al., 2010) by a factor of more than 2. Moreover, the modal annual income in the Netherlands is approximately €36,000. The normative question then becomes whether it is justifiable to spend the equivalent of a modal annual income for a year in remission from BPD.

No incremental effect of MBT-DH over MBT-IOP was found in terms of QALYs gained and, although MBT-DH outperformed MBT-IOP slightly in terms of months in remission over the 36-month time frame, this incremental effect did not offset the extra costs associated with the more intensive MBT-DH program. The advantage of MBT-DH in terms of months in remission from BPD might partly be a result of different trajectories of change in the two treatments and might indicate an advantage in the rate, rather than the extent, of improvement. The MBT-DH patients showed improvement that was more rapid during the intensive treatment phase and then leveled off during follow-up, whereas patients in MBT-IOP showed a more gradual improvement over time (Smits et al., 2020). Over time, the difference in effects between MBT-DH and MBT-IOP appears to increase, whereas the difference in cumulative societal costs appears to increase mostly in the first year only.

Implications

Treatment for BPD in the Netherlands is included in basic health care that is covered by state-provided health insurance and therefore by law accessible for all citizens. Hence, as BPD and BPD treatment are associated with both direct and indirect costs to society, findings from this study may inform policy decisions with regard to how to distribute resources in mental health care.

The results of this study suggest that from a health economic perspective, MBT-DH cannot be recommended over the less intensive, less costly MBT-IOP program. MBT-IOP is a viable and

relatively affordable treatment option for BPD that achieves acceptable clinical outcomes. However, whether MBT-DH could be more (cost-)effective for specific subtypes of patients is a question yet to be answered. MBT-DH may be indicated when MBT-IOP is not appropriate because of problems related to housing, social security, or the patient's social network, all of which are common in BPD patients. As an intensive day-hospital setting may be an inevitable step toward recovery in a subgroup of BPD patients, one can argue from a clinical perspective that it is premature to conclude that intensive treatments such as MBT-DH do not have a place in the treatment of BPD. On the other hand, no consensus exists about the criteria for such intensive treatment, and the current results indicate that given a fixed health-care budget, a greater number of BPD patients could be treated with MBT-IOP than with MBT-DH.

Strengths and Limitations

A particular strength of the study is its generalizability to routine clinical decision-making, because we compared two credible treatment conditions in a multicenter clinical trial and took a societal perspective on costs. The study also has limitations. First, there was quite a substantial proportion of missing data, for which we used multiple imputation to mitigate the possible impact. Moreover, although sensitivity analyses showed variation in ICERs when the main cost drivers were adjusted, in all scenarios MBT-DH had a positive but from a societal perspective high ICER compared with MBT-IOP (i.e., a positive health gain effect against additional costs), which supports the robustness of our key findings. Second, we did not perform treatment completion analyses. However, the intention-to-treat principle we used is justifiable, as it aims to maximize the external validity in terms of generalizability to everyday clinical practice. Third, the study was primarily powered as an effectiveness study, which may result in a lack of power to detect significant cost differences. This limitation is mitigated by the fact that the main conclusions are based on the probabilistic comparison of costs and effects, and not on a comparison of sole costs. Fourth, although the study spanned a period of 36 months after the start of treatment, longer term follow-up may lead to different conclusions. It has been shown that BPD is associated with catch-up with normative developmental trajectories over time (Zanarini et al., 2006) and MBT-IOP and MBT-DH might affect these trajectories differentially, which could also lead to differences in the subsequent cost-effectiveness with follow-ups longer than 36 months. Fifth, as health-care systems in different countries vary widely, costs associated with BPD and its treatment by MBT could be quite different in other countries, resulting in a different weighing of costs and effects. Moreover, other health-care systems, such as those based on a user-pay system or private health insurance, may lead to different willingness to pay and hence different conclusions regarding the perceived cost-effectiveness.

Future Directions

Replication in other countries is indicated, as the differences in the cost-effectiveness of MBT-DH and MBT-IOP we found in the Netherlands may not be the same in other health-care systems and societies. Future research could also involve clinical subgroups that may benefit notably more from either of the two forms of MBT.

Finally, although we investigated the impact of treatment intensity, associated costs and effects, we did not investigate the impact of varying durations of treatment. A current trial of Juul et al. (2019) focuses on the relative effectiveness of short-term and long-term MBT in terms of treatment effects. Similar studies are needed and should contain an economic evaluation, as such studies have the potential to optimize treatment duration in terms of (cost-)effectiveness. Together with the current findings on the impact of intensity, this optimization could significantly promote access to effective treatments for BPD patients in the future.

Conclusion

In summary, this is the first study to provide a comparative health economic evaluation of MBT-DH versus MBT-IOP in the context of a large multicenter RCT. The findings indicate that MBT-DH is most likely not cost-effective when compared with MBT-IOP. MBT-IOP appears to be a relatively affordable treatment associated with significant reductions in health-care costs compared with MBT-DH, and with acceptable clinical outcomes similar to those of MBT-DH. Because health-care resources are scarce, treatment waiting lists are mounting, and only a small minority of BPD patients receives evidence-based treatment as recommended by treatment guidelines, based on the evidence presented here, MBT-IOP should be preferred over MBT-DH in routine clinical practice.

References

- Bales, D. L., Timman, R., Andrea, H., Busschbach, J. J., Verheul, R., & Kamphuis, J. H. (2015). Effectiveness of day hospital mentalization-based treatment for patients with severe borderline personality disorder: A matched control study. *Clinical Psychology and Psychotherapy*, 22(5), 409–417. <https://doi.org/10.1002/cpp.1914>
- Bales, D., van Beek, N., Smits, M., Willemsen, S., Busschbach, J. J. V., Verheul, R., & Andrea, H. (2012). Treatment outcome of 18-month, day hospital mentalization-based treatment (MBT) in patients with severe borderline personality disorder in the Netherlands. *Journal of Personality Disorders*, 26(4), 568–582. <https://doi.org/10.1521/pedi.2012.26.4.568>
- Barrachina, J., Pascual, J. C., Ferrer, M., Soler, J., Rufat, M. J., Andión, O., Tiana, T., Martín-Blanco, A., Casas, M., & Pérez, V. (2011). Axis II comorbidity in borderline personality disorder is influenced by sex, age, and clinical severity. *Comprehensive Psychiatry*, 52(6), 725–730. <https://doi.org/10.1016/j.comppsy.2010.11.009>
- Bateman, A., & Fonagy, P. (1999). Effectiveness of partial hospitalization in the treatment of borderline personality disorder: A randomized controlled trial. *The American Journal of Psychiatry*, 156(10), 1563–1569. <https://doi.org/10.1176/ajp.156.10.1563>
- Bateman, A., & Fonagy, P. (2001). Treatment of borderline personality disorder with psychoanalytically oriented partial hospitalization: An 18-month follow-up. *The American Journal of Psychiatry*, 158(1), 36–42. <https://doi.org/10.1176/appi.ajp.158.1.36>
- Bateman, A., & Fonagy, P. (2004). *Psychotherapy for borderline personality disorder: mentalization-based treatment*. Oxford University Press. <https://doi.org/10.1093/med:psych/9780198527664.001.0001>
- Bateman, A., & Fonagy, P. (2008). 8-year follow-up of patients treated for borderline personality disorder: Mentalization-based treatment versus treatment as usual. *The American Journal of Psychiatry*, 165(5), 631–638. <https://doi.org/10.1176/appi.ajp.2007.07040636>
- Bateman, A., & Fonagy, P. (2009). Randomized controlled trial of outpatient mentalization-based treatment versus structured clinical management for borderline personality disorder. *The American Journal of Psychiatry*, 166(12), 1355–1364. <https://doi.org/10.1176/appi.ajp.2009.09040539>
- Bateman, A., & Fonagy, P. (2016). *Mentalization-based treatment for personality disorders: a practical guide*. Oxford University Press. <https://doi.org/10.1093/med:psych/9780199680375.001.0001>
- Blankers, M., Koppers, D., Laurensen, E. M. P., Peen, J., Smits, M. L., Luyten, P., Busschbach, J. J., Kamphuis, J. H., Kikkert, M. J., & Dekker, J. J. M. (2019). Mentalization-based treatment versus specialist treatment as usual for borderline personality disorder: A economic evaluation alongside a randomized controlled trial with 36-month follow-up. *Journal of Personality Disorders*, 35(3), 373–392. <https://doi.org/10.1521/pedi.2019.33.454>
- Bouwman, C., De Jong, K., Timman, R., Zijlstra-Vlasveld, M., Van der Feltz-Cornelis, C., Tan Swan, S., & Hakkaart-van Roijen, L. (2013). Feasibility, reliability and validity of a questionnaire on healthcare consumption and productivity loss in patients with a psychiatric disorder (TiC-P). *BMC Health Services Research*, 13(1), Article 217. <https://doi.org/10.1186/1472-6963-13-217>
- Cristea, I. A., Gentili, C., Cotet, C. D., Palomba, D., Barbui, C., & Cuijpers, P. (2017). Efficacy of psychotherapies for borderline personality disorder: A systematic review and meta-analysis. *JAMA Psychiatry*, 74(4), 319–328. <https://doi.org/10.1001/jamapsychiatry.2016.4287>
- EuroQol Group. (1990). EuroQol—A new facility for the measurement of health-related quality of life. *Health Policy*, 16(3), 199–208. [https://doi.org/10.1016/0168-8510\(90\)90421-9](https://doi.org/10.1016/0168-8510(90)90421-9)
- First, M. B., Spitzer, R. L., Gibbon, M., Williams, J. B. W., & Benjamin, L. S. (1996). *Structured Clinical Interview for DSM-IV Axis II Personality Disorders (SCID II)*. American Psychiatric Press.
- Hakkaart-van Roijen, L., & Bouwmans, C. (2010). *Manual Short Form - Health and Labour Questionnaire*. SF-HLQ.
- Hakkaart-van Roijen, L., van Straten, A., Tiemens, B., & Donker, M. C. H. (2002). *Handleiding Trimbo/iMTA Questionnaire for Costs associated with Psychiatric illness (TiC-P)* [Manual for the Trimbo/iMTA Questionnaire for Costs associated with Psychiatric illness (TiC-P)]. iMTA/Trimbo Instituut.
- Hakkaart-van Roijen, L., Zwirs, B. W., Bouwmans, C., Tan, S. S., Schulpen, T. W., Vlasveld, L., & Buitelaar, J. K. (2007). Societal costs and quality of life of children suffering from attention deficient hyperactivity disorder (ADHD). *European Child and Adolescent Psychiatry*, 16(5), 316–326. <https://doi.org/10.1007/s00787-007-0603-6>
- Healthcare Institute Netherlands. (2016). *Richtlijn voor het uitvoeren van economische evaluaties in de gezondheidszorg* [Guideline for economic evaluations in health care]. https://tools.ispor.org/PEguidelines/source/Netherlands_Guideline_for_economic_evaluations_in_healthcare.pdf
- Husereau, D., Drummond, M., Petrou, S., Carswell, C., Moher, D., Greenberg, D., Augustovski, F., Briggs, A. H., Mauskopf, J., & Loder, E., & CHEERS Task Force. (2013). Consolidated Health Economic Evaluation Reporting Standards (CHEERS) statement. *Value in Health*, 16(2), e1–e5. <https://doi.org/10.1016/j.jval.2013.02.010>
- Jørgensen, C. R., Bøye, R., Andersen, D., Døssing Blaabjerg, A. H., Freund, D., Jordet, H., & Kjølbye, M. (2014). Eighteen months post-treatment naturalistic follow-up study of mentalization-based therapy and supportive group treatment of borderline personality disorder: Clinical outcomes and functioning. *Nordic Psychology*, 66(4), 254–273. <https://doi.org/10.1080/19012276.2014.963649>
- Jørgensen, C. R., Freund, C., Bøye, R., Jordet, H., Andersen, D., & Kjølbye, M. (2013). Outcome of mentalization-based and supportive psychotherapy in patients with borderline personality disorder: A randomized trial. *Acta Psychiatrica Scandinavica*, 127(4), 305–317. <https://doi.org/10.1111/j.1600-0447.2012.01923.x>
- Juul, S., Lunn, S., Poulsen, S., Sørensen, P., Salimi, M., Jakobsen, J. C., Bateman, A., & Simonsen, S. (2019). Short-term versus long-term mentalization-based therapy for outpatients with subthreshold or diagnosed

- borderline personality disorder: A protocol for a randomized clinical trial. *Trials*, 20(1), Article 196. <https://doi.org/10.1186/s13063-019-3306-7>
- Koopmanschap, M. A., Rutten, F. F., van Ineveld, B. M., & van Roijen, L. (1995). The friction cost method for measuring indirect costs of disease. *Journal of Health Economics*, 14(2), 171–189. [https://doi.org/10.1016/0167-6296\(94\)00044-5](https://doi.org/10.1016/0167-6296(94)00044-5)
- Kvarstein, E. H., Pedersen, G., Urnes, Ø., Hummelen, B., Wilberg, T., & Karterud, S. (2015). Changing from a traditional psychodynamic treatment programme to mentalization-based treatment for patients with borderline personality disorder—Does it make a difference? *Psychology and Psychotherapy: Theory, Research and Practice*, 88(1), 71–86. <https://doi.org/10.1111/papt.12036>
- Lamers, L. M., McDonnell, J., Stalmeier, P. F., Krabbe, P. F., & Busschbach, J. J. (2006). The Dutch tariff: Results and arguments for an effective design for national EQ-5D valuation studies. *Health Economics*, 15(10), 1121–1132. <https://doi.org/10.1002/hec.1124>
- Laurensen, E. M. P., Eeren, H. V., Kikkert, M. J., Peen, J., Westra, D., Dekker, J. J., & Busschbach, J. J. V. (2016). The burden of disease in patients eligible for mentalization-based treatment (MBT): Quality of life and costs. *Health and Quality of Life Outcomes*, 14(1), Article 145. <https://doi.org/10.1186/s12955-016-0538-z>
- Laurensen, E. M. P., Luyten, P., Kikkert, M. J., Westra, D., Peen, J., Soons, M. B. J., van Dam, A. M., van Broekhuizen, A. J., Blankers, M., Busschbach, J. J. V., & Dekker, J. J. M. (2018). Day hospital mentalization-based treatment v. specialist treatment as usual in patients with borderline personality disorder: Randomized controlled trial. *Psychological Medicine*, 48(15), 2522–2529. <https://doi.org/10.1017/S0033291718000132>
- Laurensen, E. M. P., Smits, M. L., Bales, D. L., Feenstra, D. J., Eeren, H. V., Noom, M. J., Köster, M. A., Lucas, Z., Timman, R., Dekker, J. J. M., Luyten, P., Busschbach, J. J. V., & Verheul, R. (2014). Day hospital mentalization-based treatment versus intensive outpatient mentalization-based treatment for patients with severe borderline personality disorder: Protocol of a multicentre randomized clinical trial. *BMC Psychiatry*, 14(301), Article 301. <https://doi.org/10.1186/s12888-014-0301-0>
- Leichsenring, F., Leibing, E., Kruse, J., New, A. S., & Leweke, F. (2011). Borderline personality disorder. *The Lancet*, 377(9759), 74–84. [https://doi.org/10.1016/S0140-6736\(10\)61422-5](https://doi.org/10.1016/S0140-6736(10)61422-5)
- Marshall, A., Altman, D. G., Royston, P., & Holder, R. L. (2010). Comparison of techniques for handling missing covariate data within prognostic modelling studies: A simulation study. *BMC Medical Research Methodology*, 10, Article 7. <https://doi.org/10.1186/1471-2288-10-7>
- Meuldijk, D., McCarthy, A., Bourke, M. E., & Grenyer, B. F. (2017). The value of psychological treatment for borderline personality disorder: Systematic review and cost offset analysis of economic evaluations. *PLoS ONE*, 12(3), e0171592. <https://doi.org/10.1371/journal.pone.0171592>
- Morey, L. C. (1991). *The Personality Assessment Inventory: Professional manual*. Psychological Assessment Resources.
- Organisation for Economic Co-Operation and Development. (2019). *Prices: Purchasing power parities for GDP and related indicator*. Main Economic Indicators (database). <https://doi.org/10.1787/data-00608-en>
- Paris, J. (2010). Estimating the prevalence of personality disorders in the community. *Journal of Personality Disorders*, 24(4), 405–411. <https://doi.org/10.1521/pedi.2010.24.4.405>
- Ramsey, S. D., Willke, R. J., Glick, H., Reed, S. D., Augustovski, F., Jonsson, B., Briggs, A., & Sullivan, S. D. (2015). Cost-effectiveness analysis alongside clinical trials II—An ISPOR good research practices task force report. *Value in Health*, 18(2), 161–172. <https://doi.org/10.1016/j.jval.2015.02.001>
- Rubin, D. B. (1987). *Multiple imputation for survey nonresponse*. Wiley. <https://doi.org/10.1002/9780470316696>
- Skodol, A. E., Stout, R. L., McGlashan, T. H., Grilo, C. M., Gunderson, J. G., Shea, M. T., Morey, L. C., Zanarini, M. C., Dyck, I. R., & Oldham, J. M. (1999). Co-occurrence of mood and personality disorders: A report from the Collaborative Longitudinal Personality Disorders Study (CLPS). *Depression and Anxiety*, 10(4), 175–182. [https://doi.org/10.1002/\(SICI\)1520-6394\(1999\)10:4<175:AID-DA6>3.0.CO;2-2](https://doi.org/10.1002/(SICI)1520-6394(1999)10:4<175:AID-DA6>3.0.CO;2-2)
- Smits, M. L., Feenstra, D. J., Bales, D. L., Blankers, M., Dekker, J. J. M., Lucas, Z., Kamphuis, J. H., Busschbach, J. J. V., Verheul, R., & Luyten, P. (2020). Day hospital versus intensive outpatient mentalization-based treatment: 3-year follow-up of patients treated for borderline personality disorder in a multicentre randomized clinical trial - ERRATUM. *Psychological Medicine*, 7, 1–4. <https://doi.org/10.1017/S0033291720004018>
- Smits, M. L., Feenstra, D. J., Eeren, H. V., Bales, D. L., Laurensen, E. M. P., Blankers, M., Soons, M. B. J., Dekker, J. J. M., Lucas, Z., Verheul, R., & Luyten, P. (2019). Day hospital versus intensive out-patient mentalisation-based treatment for borderline personality disorder: Multi-centre randomised clinical trial. *The British Journal of Psychiatry*, 216(2), 79–84. <https://doi.org/10.1192/bjp.2019.9>
- Soeteman, D. I., Hakkaart-van Roijen, L., Verheul, R., & Busschbach, J. J. V. (2008). The economic burden of personality disorders in mental health care. *The Journal of Clinical Psychiatry*, 69(2), 259–265. <https://doi.org/10.4088/JCP.v69n0212>
- Soeteman, D. I., Verheul, R., Delimon, J., Meerman, A. M. M. A., van den Eijnden, E., Rossum, B. V., Ziegler, U., Thunnissen, M., Busschbach, J. J., & Kim, J. J. (2010). Cost-effectiveness of psychotherapy for cluster B personality disorders. *The British Journal of Psychiatry*, 196(5), 396–403. <https://doi.org/10.1192/bjp.bp.109.070482>
- Stevenson, J., & Meares, R. (1999). Psychotherapy with borderline patients: II. A preliminary cost benefit study. *Australian and New Zealand Journal of Psychiatry*, 33(4), 473–477. <https://doi.org/10.1080/j.1440-1614.1999.00595.x>
- Storebø, O. J., Stoffers-Winterling, J. M., Völlm, B. A., Kongerslev, M. T., Mattivi, J. T., Jørgensen, M. S., Faltinsen, E., Todorovac, A., Sales, C. P., Callesen, H. E., Lieb, K., & Simonsen, E. (2020). Psychological therapies for people with borderline personality disorder [Review]. *Cochrane Database of Systematic Reviews*, 5(5), Article CD012955. <https://doi.org/10.1002/14651858.CD012955.pub2>
- Trull, T. J., Sher, K. J., Minks-Brown, C., Durbin, J., & Burr, R. (2000). Borderline personality disorder and substance use disorders: A review and integration. *Clinical Psychology Review*, 20(2), 235–253. [https://doi.org/10.1016/S0272-7358\(99\)00028-8](https://doi.org/10.1016/S0272-7358(99)00028-8)
- van Buuren, S., & Groothuis-Oudshoorn, K. (2011). mice: Multivariate imputation by chained equations in R. *Journal of Statistical Software*, 45(3), Article 67. <https://doi.org/10.18637/jss.v045.i03>
- van Hout, B. A., Al, M. J., Gordon, G. S., & Rutten, F. F. (1994). Costs, effects and C/E-ratios alongside a clinical trial. *Health Economics*, 3(5), 309–319. <https://doi.org/10.1002/hec.4730030505>
- Zanarini, M. C., Frankenburg, F. R., Dubo, E. D., Sickel, A. E., Trikha, A., Levin, A., & Reynolds, V. (1998). Axis I comorbidity of borderline personality disorder. *The American Journal of Psychiatry*, 155(12), 1733–1739. <https://doi.org/10.1176/ajp.155.12.1733>
- Zanarini, M. C., Frankenburg, F. R., Hennen, J., Reich, D. B., & Silk, K. R. (2006). Prediction of the 10-year course of borderline personality disorder. *The American Journal of Psychiatry*, 163(5), 827–832. <https://doi.org/10.1176/ajp.2006.163.5.827>
- Zwaap, J., Knies, S., van der Meijden, C., Staal, P., & Van der Heijden, L. (2016). *Kosteneffectiviteit in de praktijk* [Cost-effectiveness in practice]. Zorginstituut Nederland.