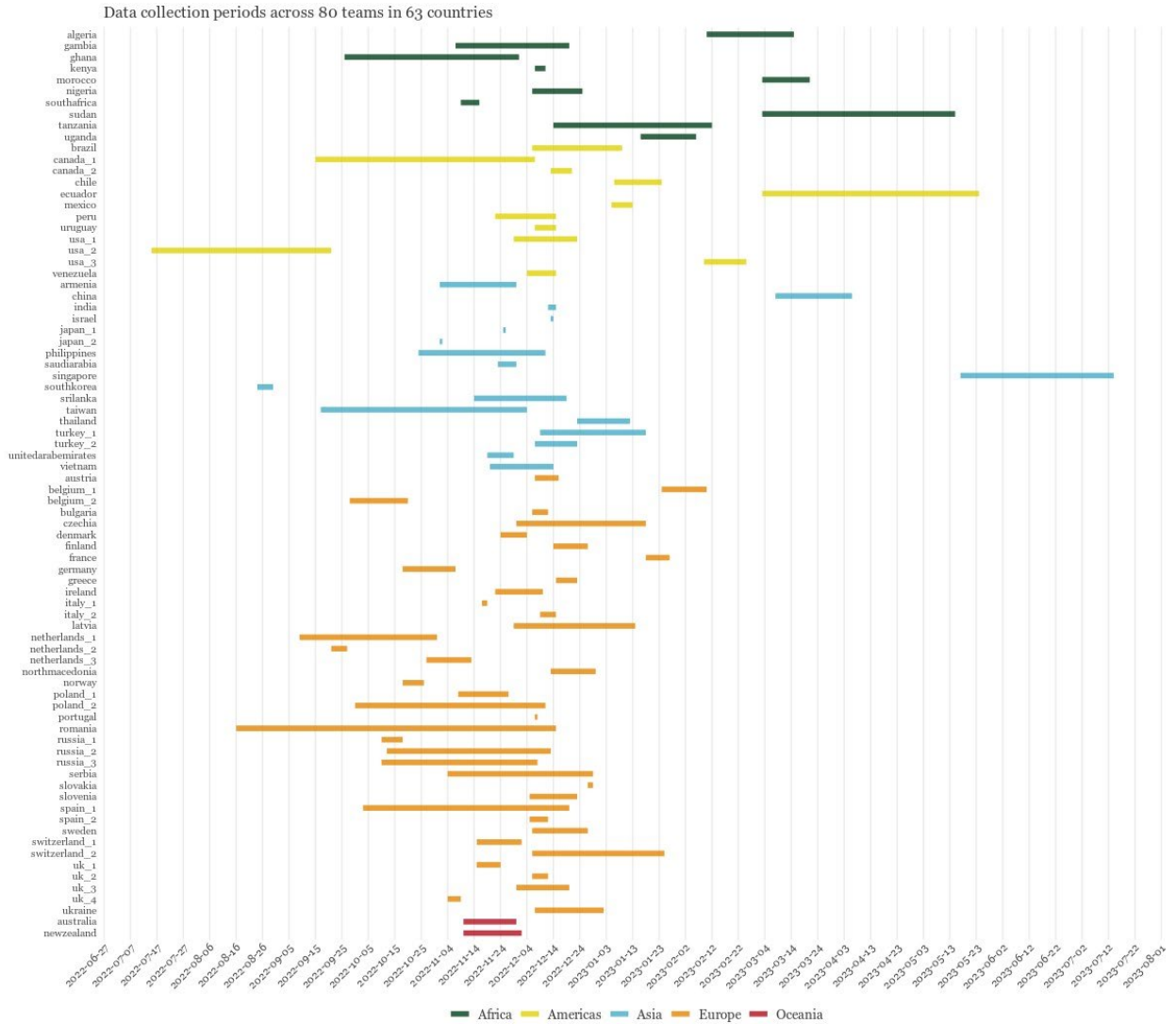


Supplemental Information

Supplemental Figures

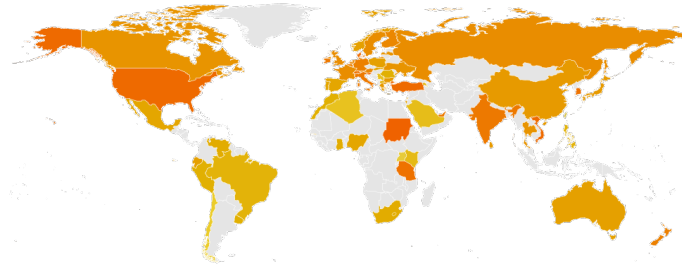
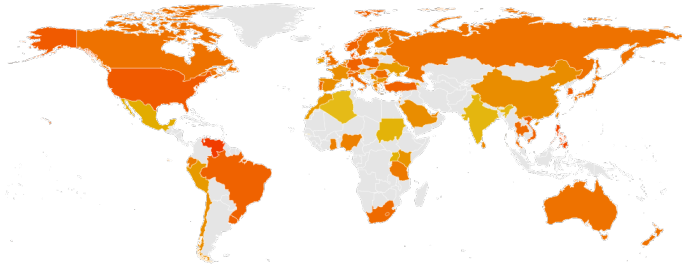


International Collaboration to Understand Climate Action
<https://manylabsclimate.wordpress.com/>

Supplemental Figure S1. Gantt Chart illustrating the data collection periods for each surveyed country. A high-resolution version of this image can be found at <https://osf.io/tpw2c>.

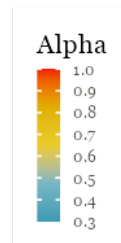
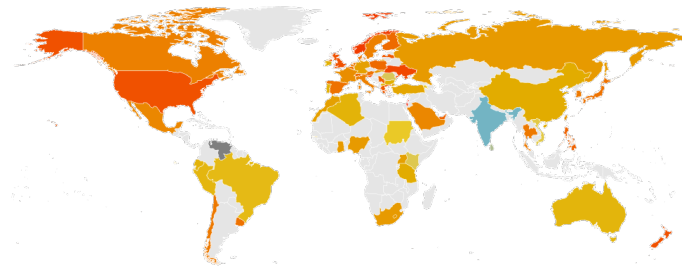
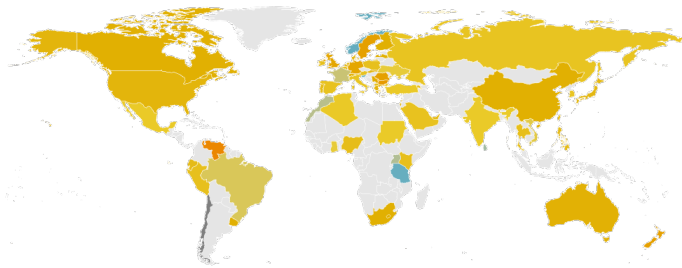
Environmental Identity

External Motivation



Internal Motivation

Trust in Climate Science



Supplemental Figure S2. Cronbach's alpha reliability score in 63 countries.

Supplemental Tables

Supplemental Table S1: Descriptives of the age, and gender makeup of participants included across all data collection teams.								
Team	N	Age (Mean)	Age (SD)	Age percentage of responses	Gender percentage of males	Percentage of females	Percentage of non-binary/other	Percentage of NA/prefer not to say
Algeria	528	32.3	9.5	99.6	69.7	29.7	0	0.6
Armenia	492	32	13.8	99.8	36	63.4	0.2	0.4
Australia	979	46.1	15.7	100	47.1	52.7	0.2	0
Austria	502	37.9	13.4	100	49.2	50	0.6	0.2
Belgium_1	522	48.7	16.5	93.1	48.3	44.1	0.8	6.9
Belgium_2	512	45.9	14.6	99.6	49.6	49.8	0.2	0.4
Brazil	1261	38.1	13.8	99.4	48.3	51.3	0.3	0.1
Bulgaria	778	41.3	13.4	99.5	50.3	49	0.1	0.6
Canada_1	858	20.5	3.5	99.9	24.2	72	2.2	1.5
Canada_2	303	46.3	15.3	100	49.5	49.8	0.3	0.3
Chile	1992	42.3	18	22.4	13.1	9.2	0.3	77.4
China	896	28.3	7.2	100	38.2	61.5	0.1	0.2
Czechia	547	26.1	11.4	100	30.3	67.5	1.6	0.5

Denmark	792	48.5	18	63.8	33.2	30.7	0	36.1
Ecuador	679	33.5	10.5	99	51	46.1	1	1.9
Finland	625	42.9	15	99.8	42.1	57.3	0.3	0.3
France	1480	47.1	15.8	99.7	46.9	52.6	0.3	0.2
The Gambia	527	24.3	6.4	97.9	51.2	45.4	1.1	2.3
Germany	1545	46.9	15.8	99.7	51.7	47.3	0.2	0.8
Ghana	522	29.1	8.6	99.6	58	39.5	1	1.5
Greece	597	39.4	12.2	98.2	55.3	43.2	0.3	1.2
India	688	26.8	8.5	100	62.9	34.7	1	1.3
Ireland	753	27.2	9.3	99.5	48.9	48.9	0.8	1.5
Israel	1384	38.6	12.9	100	51.4	48	0.2	0.4
Italy_1	591	46.9	14.8	84.8	42	42.8	0	15.2
Italy_2	993	29.7	9.2	100	50.1	47.5	2.1	0.3
Japan_1	653	42.1	10.2	100	54.7	45.2	0	0.2
Japan_2	802	48.9	11.5	100	70.7	27.4	0.2	1.6
Kenya	409	31.8	13.6	100	56.2	43.3	0.2	0.2
Latvia	485	51.6	15.2	99.4	26.2	72	0.8	1
Mexico	490	38.6	13.3	100	49.2	50.2	0.6	0

Morocco	474	34.2	11.7	99.4	56.5	42.8	0	0.6
Netherlands_1	854	30.2	14.8	99.9	27.4	71.5	0.7	0.4
Netherlands_2	510	47.6	16.5	100	49.6	50	0.2	0.2
Netherlands_3	500	47.4	16.2	100	48.2	51	0.6	0.2
New Zealand	1005	46.3	16	100	45.7	54.1	0.2	0
Nigeria	1513	32.1	9.7	99.4	61.7	37.5	0	0.8
North Macedonia	878	26.2	11.9	99.2	28	68.3	1.3	2.4
Norway	997	52.6	14.8	99.5	51.8	46.4	1	0.8
Peru	405	24.2	7.7	99.8	37.5	59.5	1.5	1.5
Philippines	145	27.4	7.9	98.6	29.7	62.1	2.8	5.5
Poland_1	1883	47.1	16.3	99.6	48.3	51	0.5	0.2
Poland_2	463	27.7	8.6	99.6	12.7	84.9	1.9	0.4
Portugal	499	27.2	7.9	100	50.1	48.5	1.4	0
Romania	411	42.7	14	98.8	66.7	31.9	0.2	1.2
Russia_1	718	35.6	11.8	99.3	49.7	49	0.1	1.1
Russia_2	395	24.9	10.1	100	17.5	80.5	0.5	1.5
Russia_3	322	22	7.2	100	37.6	60.9	0.3	1.2
Saudi Arabia	489	34.4	8.7	98	54	45.8	0	0.2

Serbia	337	40.4	13.5	97.6	27	70	0.3	2.7
Singapore	500	36.3	11.6	99.6	49	50.2	0	0.8
Slovakia	1027	44.4	15.4	99.4	46.4	52.6	0.5	0.5
Slovenia	501	34.1	11.3	99.8	58.3	40.5	0.4	0.8
South Africa	496	35.9	12.3	99.2	46	53.2	0	0.8
South Korea	639	43.8	13.8	100	48.8	50.9	0	0.3
Spain_1	110	38.5	14.5	99.1	36.4	59.1	0.9	3.6
Spain_2	434	46.6	15.4	99.8	49.3	48.8	0.9	0.9
Sri Lanka	413	27.7	7.7	100	73.4	23.2	1	2.4
Sudan	623	31.4	7.1	99	67.9	31.3	0	0.8
Sweden	2393	40.6	15.4	99.3	45.8	52.8	0.6	0.8
Switzerland_1	512	45.2	14.9	99.8	48.6	50.8	0	0.6
Switzerland_2	531	43.9	14.7	99.6	49	50.5	0.2	0.4
Taiwan	206	31.1	9.6	99	43.2	51.5	3.4	1.9
Tanzania	104	28.4	7.7	98.1	70.2	26	1.9	1.9
Thailand	586	36.1	12.1	97.1	55.6	40.4	3.2	0.7
Turkey_1	359	25	8.2	99.2	17	81.1	0.3	1.7
Turkey_2	347	39.7	13.1	100	47.6	51.9	0.3	0.3

Uganda	476	36.1	13.9	99.8	51.3	47.9	0.4	0.4
UK_1	235	32.4	10.1	100	46	54	0	0
UK_2	952	44.4	16.1	99.8	40.8	58.5	0.3	0.4
UK_3	287	23.7	8.2	99.7	18.8	63.1	7.7	10.5
UK_4	501	41.3	14.8	100	49.7	48.5	1.6	0.2
Ukraine	496	30.7	11.4	99.2	29.4	68.3	1	1.2
United Arab Emirates	554	34.5	8.9	98.7	52.3	47.3	0	0.4
Uruguay	497	37.4	12.3	99.8	29.6	68.6	1	0.8
USA_1	838	43.7	15.1	99.8	45.7	52.4	1.1	0.8
USA_2	2360	45.5	16.5	99.6	48	49.5	1.9	0.6
USA_3	5055	46.4	16.2	99.5	47.7	50.7	0.7	0.9
Venezuela	110	52.4	14.9	100	60.9	35.5	2.7	0.9
Vietnam	383	22.6	7	99.5	25.3	72.8	1	0.8

Supplemental Table S2. Names of ethics review boards and corresponding files for all data collection teams.

Country team	Name of Ethics Review Board	Name of file on OSF
Algeria	Aarhus University's Research Ethics Committee	IRB_Pfattheicher_Algeria.pdf

Armenia	RUHR-UNIVERSITÄT BOCHUM Fakultät für Psychologie Ethikkommission	IRB_HOFMANN_Armenia.pdf
Australia	Research Ethics Office, The Australian National University	IRB_KLAS_New Zealand
Austria	The Ethics Committee of the Faculty of Business, Economics and Social Sciences of the University of Bern	IRB_BERGER_Switzerland
Belgium_1	Comité d'Avis Ethique de la Faculté des Sciences Psychologiques et de l'Education, Université Libre de Bruxelles	IRB_BERTIN_French-speaking-Belgium
Belgium_2	Sociaal-Maatschappelijke Ethische Commissie (SMEC), KU Leuven	IRB_LANGE_Belgium
Brazil	COMISSÃO NACIONAL DE ÉTICA EM PESQUISA	IRB_REGO_Brazil
Bulgaria	The Ethics Committee of the Faculty of Business, Economics and Social Sciences of the University of Bern	IRB_BERGER_Switzerland
Canada_1	The University of British Columbia, Office of Research Services, Behavioural Research Ethics Board	IRB_LUO_Canada
Canada_2	Simon Frazer University Research Ethics	IRB_LUTZ_Canada
Chechia	IRB, Department of Management, Prague University of Economics and Business	IRB_SAY_Czechia

Chile	Comité Ético Científico de Ciencias Sociales, Pontificia Universidad Católica de Chile	IRB_Carvacho_Chile
China (TW)	Northwestern University, Institutional Review Board	IRB_Zhao_China
Denmark	The Research Ethics Committee, Aarhus BSS	IRB_Elbaek_Denmark
Ecuador	University of Oslo, Faculty of Social Sciences, Department of Psychology's Research Ethics Committee	IRB_Haugestad_Ecuador
Finland	IRB Universitetet i Stavanger, Det samfunnsvitenskapelige fakultet/ Institutt for sosialfag	IRB_GRASSINI_Finland
France	CUREG, Université de Genève	IRB_BROSCH_France
Gambia	Ethikkommission Paris-Lodron-Universität Salzburg	IRB_Farage_The Gambia
Germany	The Ethics Committee of the Faculty of Business, Economics and Social Sciences of the University of Bern	IRB_BERGER_Switzerland
Ghana	Ethikkommission der Fakultät für Mathematik, Informatik und Statistik, LMU München	IRB_Feuerriegel_Ghana
Greece	Univeristy of Crete Research Ethics Committee	IRB_Gkinopoulos_greece
India	Ethics Review Board (FMG-UvA), University of Amsterdam	IRB_Dubey_India

Ireland	EHS Research Ethics, University of Limerick	IRB_Griffin_Ireland
Israel	Social Sciences Ethics Committee, The Hebrew Univesristy of Jerusalem	IRB_Cohen-EICK_Israel
Italy_1	Institutional Review Board for Social & Behavioral Sciences, University of Virginia	IRB_Cian_italy
Italy_2	COMITATO ETICO DELLA RICERCA PSICOLOGICA, Dipartimenti/Sezione di Psicologia, Università di Padova	IRB_Tedaldi_Italy
Japan_1	IRB of the Kochi University of Technology	IRB_HIMICHI_Japan.pdf
Japan_2	The Ethics Review Committee on Research with Human Subjects of Waseda University	IRB_ISHII_Japan.pdf
Kenya	The Science-Geosciences Ethics Review Board (SG ERB) at Utrecht University	IRB_VAN DEN BROEK_KenyaTanzaniaUganda.pdf
Latvia	The IRB of the Latvijas Universitātes Humanitāro	IRB_Vanags_Latvia.pdf
Mexico	Research Commission of the Leuphana University of Lüneburg	IRB_LOSCHELDER_Mexico.pdf
Morocco	Institutional Review Board at NYU Abu Dhabi	IRB_Bélangier_Morocco_Sudan.pdf
Netherlands_1	Ethics Review Board, Tilburg School of Social and Behavioral Sciences, Tilburg University	IRB_vanSchie_Netherlands.pdf

Netherlands_2	Ethics Review Board, Communication Science, University of Amsterdam	IRB_Scholz_Netherlands.pdf
Netherlands_3	Ethics Review Board, Communication Science, University of Amsterdam	IRB_Scholz_Netherlands.pdf
New Zealand	the Science & Med DERC Chair at the Australian National University	IRB_Klas_New_Zealand.pdf
Nigeria	Science, Technology, Engineering, and Mathematics Ethical Review Committee at the University of Birmingham	IRB_CUTLER_Nigeria.pdf
North Macedonia	Етичкиот поткомитет за медицина, фармација, ветерина и стоматологија при МАНУ, Македонска академија на науките и уметностите	IRB_GJONESKA_Macedonia.pdf
Norway	Norwegian School of Economics Institutional Review Board	IRB_Sjaastad_Norway.pdf
Peru	Universidad Peruana Cayetano Heredia	IRB_MONGE_PERU.pdf
Philippines	University of the Philippines Visayas RESEARCH ETHICS BOARD	IRB_Guilaran_Philippines.pdf
Poland_1	Faculty of Philosophy and Social Sciences, Nicolaus Copernicus University	IRB_Herman_poland.pdf
Poland_2	Faculty of Philosophy and Social Sciences, Nicolaus Copernicus University	IRB_Herman_poland.pdf
Portugal	the Ethical and Deontological Committee for Scientific Research (CEDIC) at the University of Lusofona	IRB_FARIAS_Portugal.pdf

Romania	the Institutional Review Board at the University of Pennsylvania	IRB_ETIENNE_Romania.pdf
Russia_1	HSE University, Center for sociocultural research	IRB_Grigoryev_Russia.pdf
Russia_2	Ethics committee of the Ural Federal University	IRB_Pavlov_Russia.pdf
Russia_3	Ethics Committee of The South Ural University of Technology	IRB_Valko_Russia.pdf
Saudi Arabia	Research Committee at the Canadian University Dubai	IRB_Contu_UnitedArabEmirates.pdf
Serbia	Ethics Committee of the Department of Psychology, Faculty of Philosophy, University of Novi Sad	IRB_Jovanović_Serbia
Singapore	Human research ethics approval of the University of the Sunshine Coast	IRB_CHOW_Singapore.pdf
Slovakia	Univerzita Komenskeho v Bratislave	IRB_Findor_Slovakia.pdf
Slovenia	The Ethics Committee of the Faculty of Business, Economics and Social Sciences of the University of Bern	IRB_BERGER_Switzerland
South Africa	The Ethics Committee of the Faculty of Psychology of the University of Basel	IRB_Lagomarsino_South Africa
South Korea	Ulsan National Institute of Science and Technology	IRB_CHUNG_SouthKorea

Spain_1	Comite Etico de Investigacion con Humanos Universidad de Cordoba	IRB_BLAYA-BURGO_Spain.pdf
Spain_2	The Committee for the Use of Human Subjects in Research (CUHSR) at Esade	IRB_Schmid_Spain.pdf
Sri Lanka	Research Ethics at The London School of Economics and Political Sciences	IRB_Sabherwal_SriLanka.pdf
Sudan	Institutional Review Board at NYU Abu Dhabi	IRB_Bélanger_Morocco_Sudan.pdf
Sweden	IRB exempt. Waiver added to folder.	IRB_Koppel_Sweden.pdf
Switzerland_1	The Ethics Committee of the Faculty of Business, Economics and Social Sciences of the University of Bern	IRB_BERGER_Switzerland.pdf
Switzerland_2	Research Ethics Commission of the University of Lausanne (CER-UNIL)	IRB_Sarrasin_Switzerland.pdf
Taiwan	College of Management, National Kaohsiung University of Science and Technology	IRB_NGUYEN_Taiwan.pdf
Tanzania	The Science-Geosciences Ethics Review Board (SG ERB) at Utrecht University	IRB_VAN DEN BROEK_KenyaTanzaniaUganda.pdf
Thailand	School of Global Studies, Thammasat University	IRB_GAINS_Thailand.pdf
Turkey_1	Human Research Ethics Committee of Kadir Has University	IRB_OZDOGRU_Turkey.pdf

Turkey_2	Human Research Ethics Committee of Kadir Has University	IRB__ULUG__TURKEY.PDF
UAE	Institutional Review Board at NYU Abu Dhabi	IRB_Bélanger_UAE.pdf
Uganda	The Science-Geosciences Ethics Review Board (SG ERB) at Utrecht University	IRB_VAN DEN BROEK_KenyaTanzaniaUganda.pdf
UK_1	The University of Birmingham's research ethics processes	IRB_BOUGUETTAYA_UNITED_KINGDOM
UK_2	Science, Technology, Engineering, and Mathematics Ethical Review Committee at the University of Birmingham	IRB_CUTLER_UK.pdf
UK_3	The School Research Ethics Panel	IRB_Gradidge_UK.pdf
UK_4	The University of Birmingham's research ethics processes	IRB_BOUGUETTAYA_UNITED_KINGDOM
Ukraine	The ethical review board at Kyiv School of Economics	IRB_BRUK_UKRAINE.pdf
Uruguay	Comite de Etica en Investigacion de la Facultad de Psicologia de la Universidad de la Republica	IRB_FREIRA_Uruguay.pdf
US_1	Science, Technology, Engineering, and Mathematics Ethical Review Committee at the University of Birmingham	IRB_CUTLER_USA.pdf
US_2	Stanford Research Compliance Office	IRB_Willer_USA
US_3	The internal review board at New York University	IRB_DOELL_USA.pdf

Venezuela	FSW Research Ethics Review at the University of Amsterdam	IRB_ETIENNE_Venezuela.pdf
Vietnam	University of Economics Ho Chi Minh City	IRB_HUYNH_Vietnam

Table S3: Additional independent variables

Variable	Question Text	Type of question & possible responses
Trust in climate science/scientists	<ol style="list-style-type: none"> 1. On average, how competent are climate change research scientists? 2. On average, how much do you trust scientific research about climate change? 	Slider from 0-100 from “Not at all” to “Very much so”. Participants were also allowed to respond with “No opinion”
Trust in government	On average, how much do you trust your government?	Slider from 0-100 from “Not at all” to “Very much so”. Participants were also allowed to respond with “No opinion”
Identification as a humanitarian	To what degree do you see yourself as someone who cares about human welfare?	Slider from 0-100 from “Not at all” to “Very much so”. Participants were also allowed to respond with “No opinion”
Identification as a global citizen	To what degree do you think of yourself as a global citizen?	Slider from 0-100 from “Not at all” to “Very much so”. Participants were also allowed to respond with “No opinion”
Environmentalist Identity	<p>To what degree...</p> <ol style="list-style-type: none"> 1. do you see yourself as someone who cares about the natural environment 2. are you pleased to be someone who cares about the natural environment 3. do you feel strong ties with others who care about the natural environment 4. do you identify with others who care about the natural environment 	Slider from 0-100 from “Not at all” to “Very much so”.
External motivation to act sustainably	<p>Please rate the degree to which you agree/disagree with the following statements about yourself:</p> <ol style="list-style-type: none"> 1. Because of today’s politically correct standards, I try to appear pro-environmental. 2. I try to hide my negative thoughts about pro-environmental behavior in order to avoid negative reactions from others. 3. If I acted anti-environmental, I would be concerned that others would be angry with me. 4. I attempt to appear pro-environmental in order to avoid disapproval from others. 	Slider from 0-100 from “Strongly disagree” to “Strongly agree”

5. I try to act pro-environmental because of pressure from others.

Internal motivation to act sustainably

Please rate the degree to which you agree/disagree with the following statements about yourself:

1. I attempt to behave pro-environmentally because it is personally important to me.
2. According to my personal values, acting non-environmental is OK. {reversed}
3. I am personally motivated by my beliefs to be pro-environmental.
4. Because of my personal values, I believe that acting anti-environmental is wrong.
5. Being pro-environmental is important to my self-concept.

Slider from 0-100 from “Strongly disagree” to “Strongly agree”

Pluralistic ignorance estimate

Think for a moment about people from your country and their views on climate change.
What percentage of people in your country do you think would agree with the statement "Climate change is a global emergency"?

Slider from 0-100 with the label “% Who Agree”

Variations of “climate change” terms¹

To what degree are you willing to act to prevent {term}.

Terms included:

Climate change, global warming, global heating, the climate crisis, carbon emissions, the climate emergency, or carbon pollution

Slider from 0-100 from “Not at all” to “Very much so”.

¹ This item was presented in a between-subjects design. All participants in the control condition were exposed to one term exclusively.

Table S4: Descriptions and sample sizes for the interventions that included additional items

Intervention	Question text	Type of question & possible responses	Number of Responses	Number of misses (non-responses)	Percentage of Non-Responses (%)
Work Together Norm	If you are taking steps towards reducing your carbon footprint, to what extent would you feel like you are doing so together with other {participant's nationality}?	Slider from 0-100 from “Not at all” to “Extremely”. Participants were also allowed to respond with “No opinion”	5090	70	1.36
	To what extent do you feel like taking steps towards reducing your carbon footprint is something shared with other {participant's nationality}?	Slider from 0-100 from “Not at all” to “Extremely”. Participants were also allowed to respond with “No opinion”	5115	45	0.87
	To what extent do you feel like taking steps towards reducing your carbon footprint involves a sense of togetherness with other {participant's nationality}?	Slider from 0-100 from “Not at all” to “Extremely”. Participants were also allowed to respond with “No opinion”	5130	30	0.58
	How common do you think it is for {participant's nationality} to take steps towards reducing their carbon footprint?	Slider from 0-100 from “Not at all” to “Extremely”. Participants were also allowed to respond with “No opinion”	5135	25	0.48

How often do you think {participant's nationality} make an effort towards reducing their carbon footprint?	Slider from 0-100 from "Never" to "All the time". Participants were also allowed to respond with "No opinion"	5137	23	0.45
How many {participant's nationality} do you think make an effort towards reducing their carbon footprint?	Slider from 0-100 from "None" to "Extremely many". Participants were also allowed to respond with "No opinion"	5139	21	0.41
How much do you feel like other {participant's nationality} think it is good to take steps towards reducing their carbon footprint?	Slider from 0-100 from "Not at all" to "Extremely". Participants were also allowed to respond with "No opinion"	5137	23	0.45
How much do you feel like other {participant's nationality} think you should take steps towards reducing your carbon footprint?	Slider from 0-100 from "Not at all" to "Extremely". Participants were also allowed to respond with "No opinion"	5130	30	0.58
How strongly do you identify with your fellow {participant's nationality}?	Slider from 0-100 from "Not at all" to "Extremely". Participants were also allowed to respond with "No opinion"	5060	100	1.94
How important is being {participant's nationality} to your identity?	Slider from 0-100 from "Not at all" to "Extremely". Participants were also allowed to respond with "No opinion"	5050	110	2.13

	How important is being similar to other {participant's nationality} to you?	Slider from 0-100 from "Not at all" to "Extremely". Participants were also allowed to respond with "No opinion"	5101	59	1.14
	How interested are you in reducing your carbon emissions?	Slider from 0-100 from "Not at all" to "Extremely". Participants were also allowed to respond with "No opinion"	5139	21	0.41
	To what degree do you support policies aimed at reducing greenhouse gasses?	Slider from 0-100 from "Not at all" to "Extremely". Participants were also allowed to respond with "No opinion"	5131	29	0.56
	To what degree would you share climate change information on social media?	Slider from 0-100 from "Not at all" to "Extremely". Participants were also allowed to respond with "No opinion"	5127	33	0.64
	How interested are you in donating to tree planting organizations?	Slider from 0-100 from "Not at all" to "Extremely". Participants were also allowed to respond with "No opinion"	5123	37	0.72
Negative Emotions	Please rate how much of each of these emotions you typically feel. "When thinking about climate change, I am" Indifferent	Slider from "Not at all" to "Very much so".	5067	100	1.94
	Please rate how much of each of these emotions you typically feel.	Slider from "Not at all" to "Very much so".	5093	74	1.43

<p>"When thinking about climate change, I am"</p> <p>Anxious</p>				
<p>Please rate how much of each of these emotions you typically feel.</p> <p>"When thinking about climate change, I am"</p> <p>Depressed</p>	Slider from "Not at all" to "Very much so".	5055	112	2.17
<p>Please rate how much of each of these emotions you typically feel.</p> <p>"When thinking about climate change, I am"</p> <p>Helpless</p>	Slider from "Not at all" to "Very much so".	5069	98	1.90
<p>Please rate how much of each of these emotions you typically feel.</p> <p>"When thinking about climate change, I am"</p> <p>Scared</p>	Slider from "Not at all" to "Very much so".	5032	135	2.61
<p>Please rate how much of each of these emotions you typically feel.</p> <p>"When thinking</p>	Slider from "Not at all" to "Very much so".	5065	102	1.97

about climate change, I am"				
Guilty				
Please rate how much of each of these emotions you typically feel. "When thinking about climate change, I am"	Slider from "Not at all" to "Very much so".	5050	117	2.26
Hopeful				
Please rate how much of each of these emotions you typically feel. "When thinking about climate change, I am"	Slider from "Not at all" to "Very much so".	5055	112	2.17
Angry				
Before reading this, did you know what the 1.5°C climate threshold is?	Choice option between "Yes, I did know that" and "No, I did not know that".	5167	0	0.00
If life continues as it is (that is, with very little climate intervention), how many years do you think we have before we will cross the 1.5°C threshold? (please enter a number)	Participants were expected to write a number.	5167	0	0.00

<p>Please rate how much of each of these emotions you now feel.</p> <p>"When thinking about climate change, I am"</p> <p>Indifferent</p>	<p>Slider from "Not at all" to "Very much so".</p>	<p>5081</p>	<p>86</p>	<p>1.66</p>
<p>Please rate how much of each of these emotions you now feel.</p> <p>"When thinking about climate change, I am"</p> <p>Anxious</p>	<p>Slider from "Not at all" to "Very much so".</p>	<p>5104</p>	<p>63</p>	<p>1.22</p>
<p>Please rate how much of each of these emotions you now feel.</p> <p>"When thinking about climate change, I am"</p> <p>Depressed</p>	<p>Slider from "Not at all" to "Very much so".</p>	<p>5076</p>	<p>91</p>	<p>1.76</p>
<p>Please rate how much of each of these emotions you now feel.</p> <p>"When thinking about climate change, I am"</p> <p>Helpless</p>	<p>Slider from "Not at all" to "Very much so".</p>	<p>5116</p>	<p>51</p>	<p>0.99</p>

<p>Please rate how much of each of these emotions you now feel.</p> <p>"When thinking about climate change, I am"</p> <p>Scared</p>	<p>Slider from "Not at all" to "Very much so".</p>	<p>5062</p>	<p>105</p>	<p>2.03</p>
<p>Please rate how much of each of these emotions you now feel.</p> <p>"When thinking about climate change, I am"</p> <p>Guilty</p>	<p>Slider from "Not at all" to "Very much so".</p>	<p>5094</p>	<p>73</p>	<p>1.41</p>
<p>Please rate how much of each of these emotions you now feel.</p> <p>"When thinking about climate change, I am"</p> <p>Hopeful</p>	<p>Slider from "Not at all" to "Very much so".</p>	<p>5079</p>	<p>88</p>	<p>1.70</p>
<p>Please rate how much of each of these emotions you now feel.</p> <p>"When thinking about climate change, I am"</p> <p>Angry</p>	<p>Slider from "Not at all" to "Very much so".</p>	<p>5084</p>	<p>83</p>	<p>1.61</p>

Decreasing Psychological Distance	If we take little to no climate change action, how long do you think we have before we will reach 1.5°C / 2.7°F of warming? (Please enter a number)	Participants were expected to write a number.	4735	2	0.04
	Below is a list of climate change impacts. Which of these do you think will impact where you live? Select all that apply.	Participants were expected to choose from the following list of options (they could select multiple options) no impact issues for farming & crop production inland flooding & related damages water scarcity increase in infectious diseases extreme weather events reduced animal and livestock health & productivity (e.g., heat stress, diseases, productivity & death) reduced ocean and freshwater fish catch and lower fish-farm yields coastal flooding & storm damage (e.g., due to cyclones, sea level rise, storm surges) mental health issues lack of food and nutrition heat causing deaths, labour issues and harm from wildfires damage to infrastructure (e.g., power, transport, communications, water and sewage systems) damage to key economic sectors people forced to leave their home or region (due to climate changes and extreme weather events)	4689	48	1.01

	<p>Please write in a few sentences: how those climate consequences will affect you, your friends and family, and your community.</p> <p>Try to imagine these things happening today so you can be specific and describe what it will be like.</p>	Participants were expected to write a short text.	4737	0	0.00
Correcting Pluralistic Ignorance	<p>Think for a moment about {participant's nationality} and their views on climate change. How many {participant's nationality} do you think would agree with the statement "Climate change is a global emergency"?</p>	Slider from 0-100 for "% Who Agree". Participants were also allowed to respond with "No opinion"	5164	8	0.15
Letter to Future Generation	<p>Please write your letter below. You will be able to proceed after at least 3 minutes have passed.</p> <p>To remind you, this letter should describe the efforts you are taking to ensure a more stable planet for this family in 2050, and your personal legacy that you want to build.</p>	Participants were expected to write at least 100 words (5 sentences), or more, if possible.	4040	4	0.10

Future-Self Continuity	Now please write yourself a “letter from the future”. This should be a letter you are writing in the year 2030, to your past self. As the person that you will be in 2030, what role would you think would be appropriate for you in respect to climate change? What would you want to tell yourself in the past? What would you like your past self to do?	Participants were expected to write at least 100 words (5 sentences), or more, if possible.	4211	15	0.35
---------------------------	---	---	------	----	------

Table S5. All variables measured in the demographics block.

Variable	Question Text	Type of question & possible responses	Notes
Gender	“What is your gender”	Multiple choice (one answer): “Male”, “Female”, “Prefer not to say”, “Non-binary/third gender/other”	Some ethics boards required alterations of this item (see https://osf.io/qbe84 for an overview).
Age	“How old are you? (please enter a number)”	Single-line text box where the content type was restricted to numerical text (in years)	
Education	“How many years of formal education have you completed?”	Multiple choice (one answer): “0-6 (up to grade school)”, “7-12 (up to high school)”, “13-16 (college/undergraduate degree/certificate training)”, “More than 17 years (doctorate degree, medical degree, etc.)”, “prefer not to answer”	Some teams adapted this item differently on a country-by-country basis. This information can be found on https://osf.io/5ypca .
Political orientation	“What is your political orientation for the issues listed below? Please note, by “liberal” we mean classically left-wing, and by “conservative” we mean classically right-wing.	2-item, 100-point, slider scale including the items “for social issues (e.g., health care, education, etc.)” and “for economic issues (e.g., taxes)” Participants were also given the option “prefer not to respond”	Due to the requirements of some internal review boards, this item was removed completely from the data acquisition in Kenya, Tanzania, and Uganda.
Income	“What is your total yearly family/household income?”	Multiple choice (one answer), where income was listed in 8 steps (\$5,000 each), from	Research teams were instructed to try to convert this scale from United States

		<p>“Less than \$10,000” to “\$200,000 or more”. “Prefer not to say” was also listed as a possible response.</p>	<p>Dollars into an amount approximately representative for the country in terms of wealth distribution and type of currency.</p>
Indirect SES	<p>“Do you own/have access to these items in your home? (check all that apply)”</p>	<p>Multiple choice (multiple answers) including “Separate room for kitchen”, “Washing machine”, “Vacuum cleaner”, “Freezer/deep freeze”, “Personal computer”, “Bathroom”, “Television”</p>	
MacArthur SES ladder ³⁷	<p>Instructions: Think of this ladder as representing where people stand in the {country}. At the top of the ladder are the people who are the best off – those who have the most money, the most education, and the most respected jobs. At the bottom are the people who are the worst off – those who have the least money, least education, the least respected jobs, or no job. The higher up you are on this ladder, the closer you are to the people at the very top; the lower you are, the closer you are to the people at the very bottom.</p> <p>Where would you place yourself on this ladder?</p> <p>Please choose the rung where you think you stand at this time in your life relative to other people in the {country}.</p>	<p>Multiple choice (one answer): “Rung 10 (Top) People here are the best off”, “Rung 9”, “Rung 8”, ... “Rung 1 (Bottom) People here are the worst off”.</p>	

Perceived
scientific
consensus

“To the best of your knowledge, what
percentage of climate scientists have
concluded that human-caused climate
change is happening?”

Slider scale from 0 to 100,
measuring the estimate (in
percentage).

Perceived scientific consensus	“To the best of your knowledge, what percentage of climate scientists have concluded that human-caused climate change is happening?”	Slider scale from 0 to 100, measuring the estimate (in percentage).	
--------------------------------------	---	---	--

Table S6: Failure rates for the second attention check by data collection team

Team	Sample Size	Number of Second Attention Check Fails	Percentage of Attention Check Failure
algeria	568	40	7.04
armenia	556	64	11.51
australia	1016	37	3.64
austria	719	217	30.18
belgium_1	762	126	16.54
belgium_2	716	204	28.49
brazil*	1261	0	0.00
bulgaria	956	178	18.62
canada_1	894	36	4.03
canada_2	597	109	18.26
chile	2672	680	25.45
china	1050	154	14.67
czechia	844	297	35.19
denmark	1311	519	39.59
ecuador	1067	388	36.36
finland	734	109	14.85
france	1504	24	1.60
gambia	1073	546	50.89
germany	2355	810	34.39
ghana	837	315	37.63

greece	898	246	27.39
india*	688	0	0.00
ireland	1116	363	32.53
israel	1469	85	5.79
italy_1	609	18	2.96
italy_2	999	6	0.60
japan_1	654	1	0.15
japan_2	812	10	1.23
kenya	421	12	2.85
latvia	1545	1060	68.61
mexico	526	36	6.84
morocco	930	456	49.03
netherlands_1	1111	257	23.13
netherlands_2	796	286	35.93
netherlands_3	513	13	2.53
newzealand	1037	32	3.09
nigeria	2146	633	29.50
northmacedonia	1125	247	21.96
norway	1451	454	31.29
peru	469	64	13.65
philippines	242	97	40.08
poland_1	1911	28	1.47

poland_2	608	145	23.85
portugal	505	6	1.19
romania	412	1	0.24
russia_1	980	262	26.73
russia_2	501	106	21.16
russia_3	438	116	26.48
saudiarabia	611	122	19.97
serbia	639	302	47.26
singapore	666	166	24.92
slovakia	1257	230	18.30
slovenia	707	206	29.14
southafrica	753	257	34.13
southkorea	656	17	2.59
spain_1	230	120	52.17
spain_2	554	120	21.66
srilanka	513	100	19.49
sudan	1218	595	48.85
sweden	3845	1452	37.76
switzerland_1	684	172	25.15
switzerland_2	537	6	1.12
taiwan	256	50	19.53
tanzania	185	81	43.78
thailand	876	290	33.11

turkey_1	623	264	42.38
turkey_2	503	156	31.01
uganda	496	20	4.03
uk_1	277	42	15.16
uk_2	1469	517	35.19
uk_3	293	6	2.05
uk_4*	501	0	0.00
ukraine	501	5	1.00
unitedarabemi rates	638	84	13.17
uruguay	567	70	12.35
usa_1	1527	689	45.12
usa_2	2968	608	20.49
usa_3	8518	3463	40.66
venezuela	114	4	3.51
vietnam	470	87	18.51

*To note, multiple data collection teams submitted cleaned versions of their datasets, which is why some countries have 0% failure rates.