



UvA-DARE (Digital Academic Repository)

Intracellular dynamics of archaeal FANCM homologue Hef in response to halted DNA replication

Lestini, R.; Laptенок, S.P.; Kühn, J.; Hink, M.A.; Schanne-Klein, M.C.; Liebl, U.; Myllykallio, H.

DOI

[10.1093/nar/gkt816](https://doi.org/10.1093/nar/gkt816)

Publication date

2013

Document Version

Final published version

Published in

Nucleic Acids Research

[Link to publication](#)

Citation for published version (APA):

Lestini, R., Laptенок, S. P., Kühn, J., Hink, M. A., Schanne-Klein, M. C., Liebl, U., & Myllykallio, H. (2013). Intracellular dynamics of archaeal FANCM homologue Hef in response to halted DNA replication. *Nucleic Acids Research*, 41(22), 10358-10370. <https://doi.org/10.1093/nar/gkt816>

General rights

It is not permitted to download or to forward/distribute the text or part of it without the consent of the author(s) and/or copyright holder(s), other than for strictly personal, individual use, unless the work is under an open content license (like Creative Commons).

Disclaimer/Complaints regulations

If you believe that digital publication of certain material infringes any of your rights or (privacy) interests, please let the Library know, stating your reasons. In case of a legitimate complaint, the Library will make the material inaccessible and/or remove it from the website. Please Ask the Library: <https://uba.uva.nl/en/contact>, or a letter to: Library of the University of Amsterdam, Secretariat, Singel 425, 1012 WP Amsterdam, The Netherlands. You will be contacted as soon as possible.

UvA-DARE is a service provided by the library of the University of Amsterdam (<https://dare.uva.nl>)

SUPPLEMENTARY FIGURE

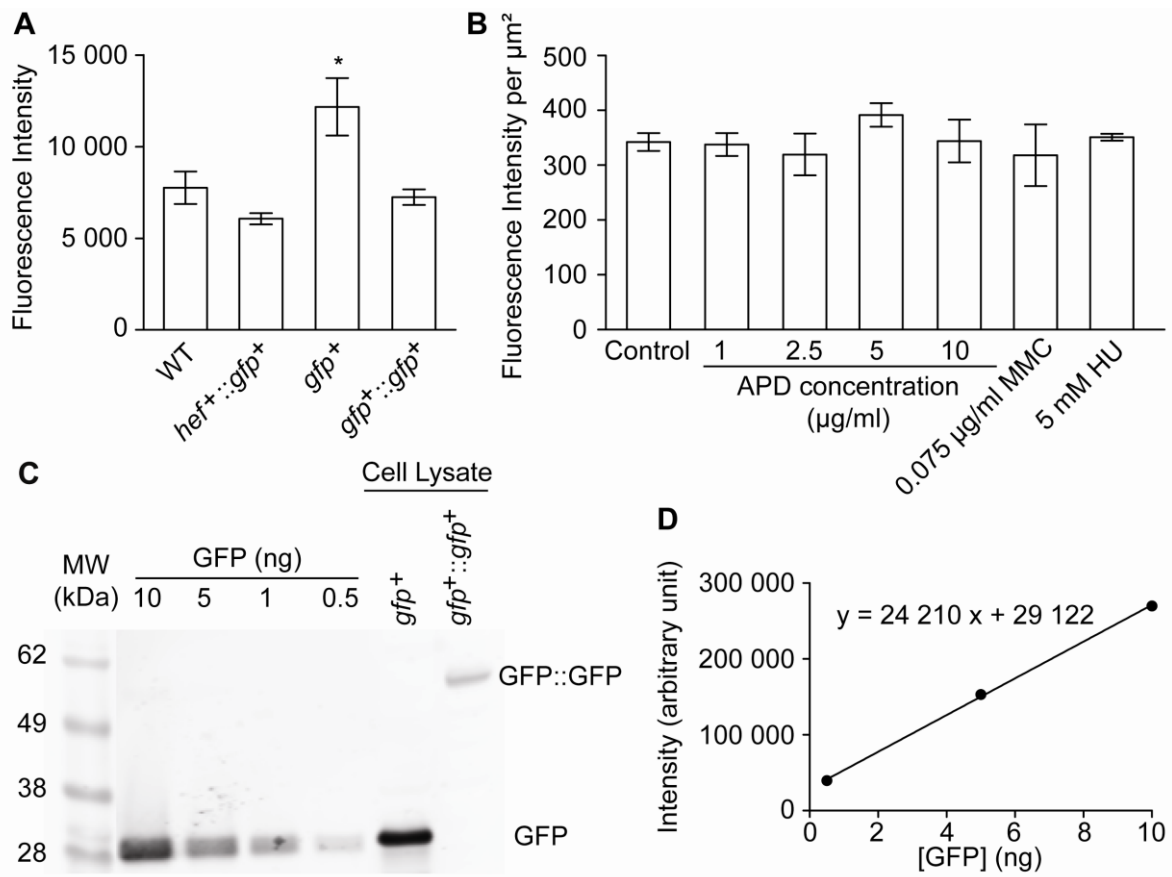


Figure S1: Quantification of Hef::GFP expression. (A) Histograms representing the average fluorescence intensity per cell measured in WT (H26), *hef⁺::gfp⁺* (HvRL37), *gfp⁺* (HvRL65) and *gfp⁺::gfp⁺* (HvRL66) cells. Errors bars represent SD. n experiments \geq 3. T test to compare values measured in GFP-expressing cells to the value measured in WT cells. * means significantly different, $p < 0.05$. (B) Histograms representing the fluorescence signal per cell surface unit measured in *hef⁺::gfp⁺* (HvRL37). Errors bars represent SD. n experiments \geq 3. (C) Western immunoblot using anti-GFP antibody. To quantify the amount of GFP in the lysates of *gfp⁺* (HvRL65) and *gfp⁺::gfp⁺* cells (HvRL66) a calibration curve we established (shown in D) using known quantities of purified rGFPuv (Clontech).