

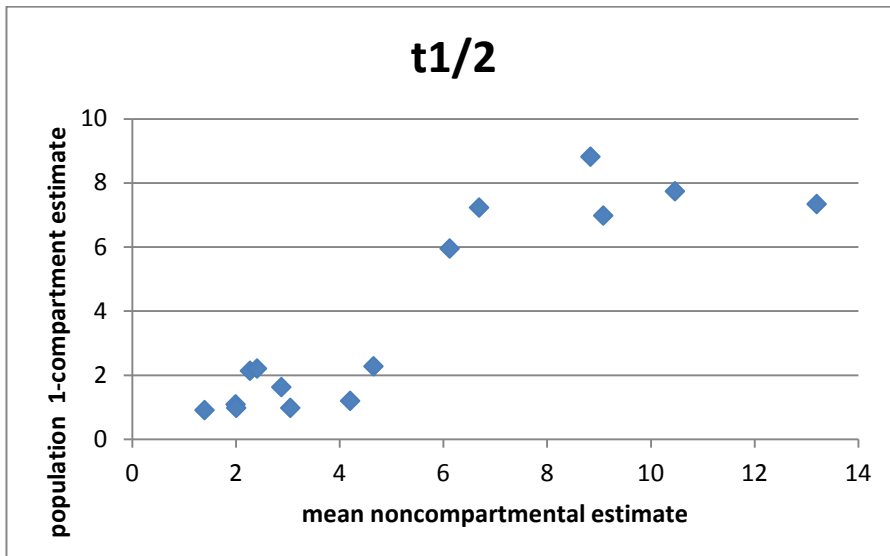
Supporting Information Table 3. Comparison of the noncompartmental results with the 1 compartment population model estimates from Monolix. For each treatment, the noncompartmental results are represented by the mean of the individual estimates. These means are compared to the corresponding population estimates (population means). Correlation coefficients are reported as well as the factor by which the two differ (slope). (A) $t_{1/2}$, (B) I_{max} , (C) AUC and (D) t_{max} are shown.

A. $T_{1/2}$

	treatment	mean noncompartmental	population estimate
G-4'G	tablet	4.655852209	2.268028832
	soy milk	2.273728492	2.135309973
	tablet + cow milk	2.413219489	2.201328564
G-7G	tablet	1.996584567	1.083263597
	soy milk	1.400413978	0.903089871
	tablet + cow milk	2.012387319	0.970658981
G-7S	tablet	4.208917215	1.194745197
	soy milk	2.877931082	1.624913808
	tablet + cow milk	3.05500712	0.977404894
G-4'S-7G	tablet	9.087898524	6.974648549
	soy milk	6.126134325	5.94313035
	tablet + cow milk	6.691032363	7.229817233
G-4',7-diG	tablet	13.20257074	7.332571732
	soy milk	8.837877286	8.817475041
	tablet + cow milk	10.46663081	7.732153803

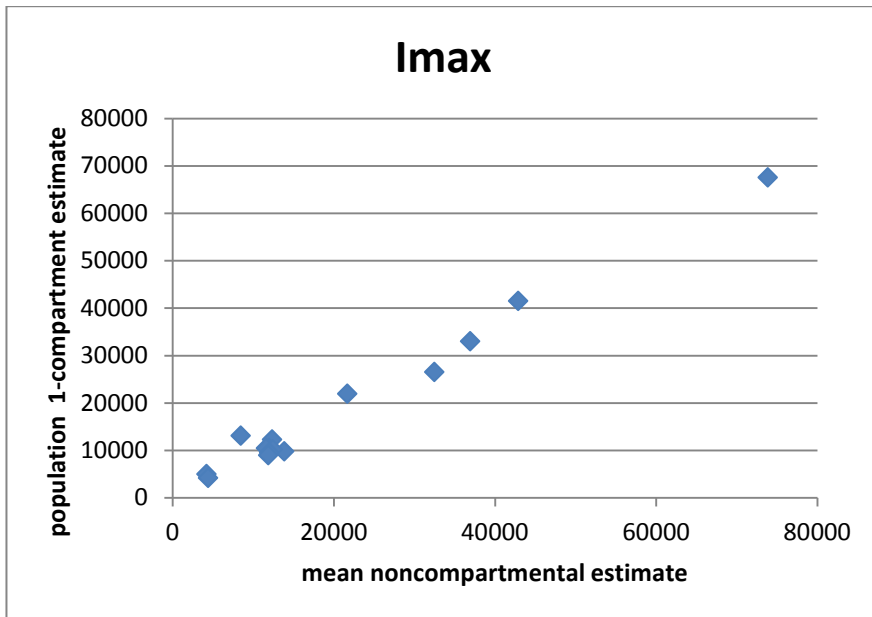
correlation coefficient (mean noncompartmental; population estimate) 0.894708392

slope (population estimate =slope * mean noncompartmental) 0.750262346



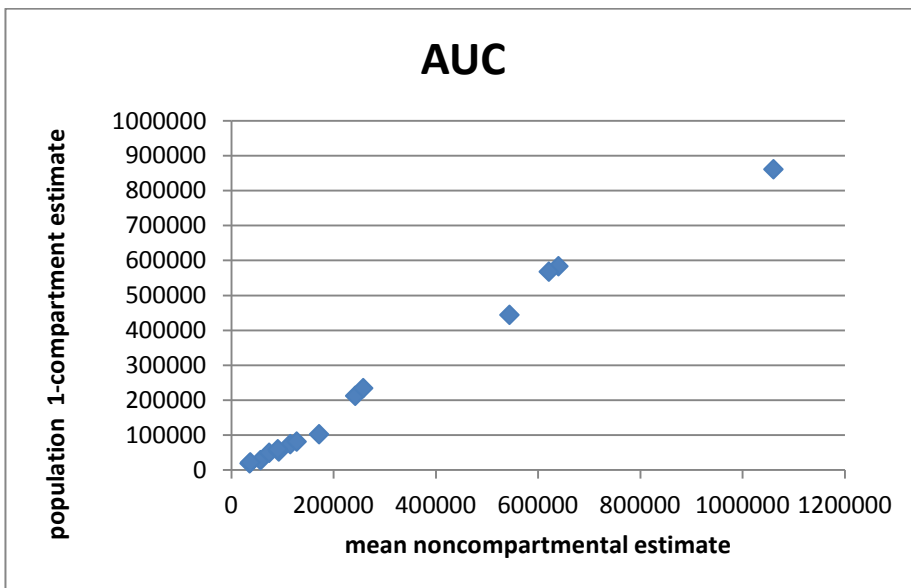
B. I_{max}

	treatment	mean noncompartmental	population estimate
G-4'G	tablet	12355.17556	12244.88691
	soy milk	21671.66667	21877.82417
	tablet + cow milk	12007.17222	10446.86636
G-7G	tablet	4197.256667	4953.070358
	soy milk	8453.056667	13039.09118
	tablet + cow milk	4421.234444	4154.579106
G-7S	tablet	11599.48218	10435.55975
	soy milk	13849.79565	9740.899225
	tablet + cow milk	12415.65631	10185.02726
G-4'S-7G	tablet	42871.61556	41479.82471
	soy milk	73864.37222	67505.92204
	tablet + cow milk	36927.63778	32957.76794
G-4',7-diG	tablet	11999.91222	9503.114866
	soy milk	32503.59778	26465.8923
	tablet + cow milk	11867.94778	8941.927792
	correlation coefficient (mean noncompartmental; population estimate)	0.99184352	
	slope (population estimate =slope * mean noncompartmental)	0.908584085	



C. AUC (Area under the curve)

	treatment	mean noncompartmental	population estimate
G-4'G	tablet	115962.9118	74301.26784
	soy milk	171764.8531	102460.7342
	tablet + cow milk	128111.5523	81512.71
G-7G	tablet	36368.53931	19459.19936
	soy milk	57478.43163	28105.77585
	tablet + cow milk	37740.72395	22143.69873
G-7S	tablet	74152.32142	49081.19034
	soy milk	93175.4492	53492.95542
	tablet + cow milk	91428.73383	59895.05873
G-4'S-7G	tablet	640166.2362	583830.4497
	soy milk	1060853.191	860588.9363
	tablet + cow milk	621804.9745	567744.5691
G-4',7-diG	tablet	242954.9733	212764.0517
	soy milk	544792.7528	444024.8274
	tablet + cow milk	258658.0223	234484.6064
	correlation coefficient (mean noncompartmental; population estimate)		0.995618881
	slope (population estimate =slope * mean noncompartmental)		0.86844858



D. T_{max}

	treatment	mean noncompartmental	population estimate ($t_{max}+t_{lag}$)
G-4'G	tablet	5.888888889	4.82
	soy milk	5.222222222	4.37
	tablet + cow milk	7.111111111	5.32
G-7G	tablet	5.277777778	4.51
	soy milk	4.833333333	4.23
	tablet + cow milk	7.555555556	4.96
G-7S	tablet	3.888888889	3.31
	soy milk	4.333333333	3.94
	tablet + cow milk	5.222222222	3.68
G-4'S-7G	tablet	7.111111111	5.91
	soy milk	7.222222222	6.04
	tablet + cow milk	8	7.36
G-4',7-diG	tablet	8.333333333	8.84
	soy milk	5.222222222	4.57
	tablet + cow milk	11.66666667	10.19
correlation coefficient (mean noncompartmental; population estimate)		0.935321318	
slope (population estimate =slope * mean noncompartmental)		0.913254356	

