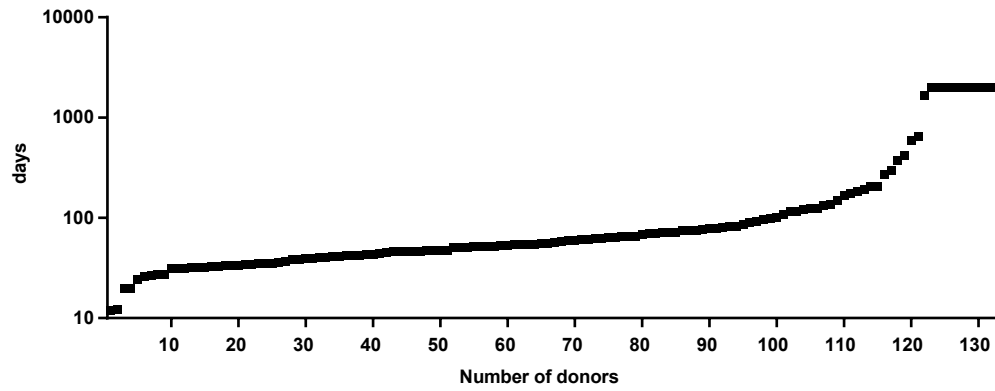


Figure S1

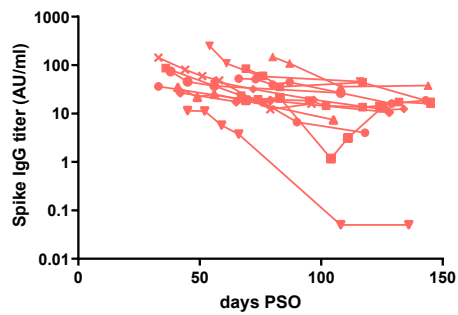
A

Half-life RBD IgG

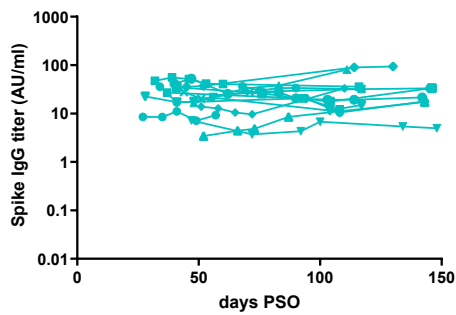


B

Declining Ab

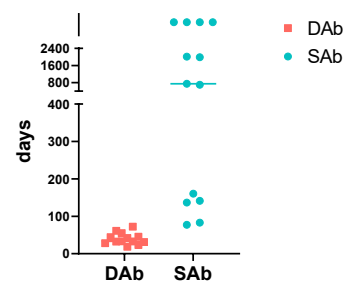


Sustained Ab



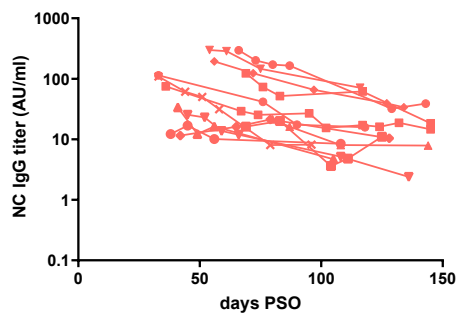
C

Half-life Spike IgG

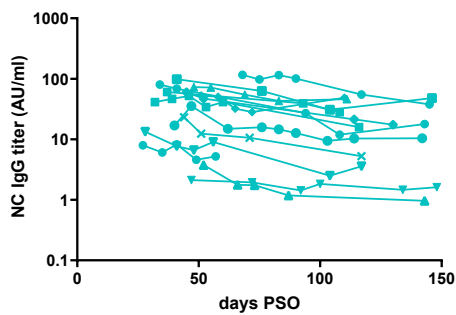


D

Declining Ab



Sustained Ab



E

Half-life NC IgG

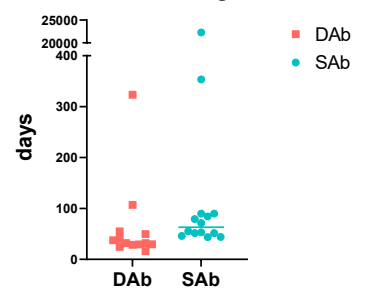
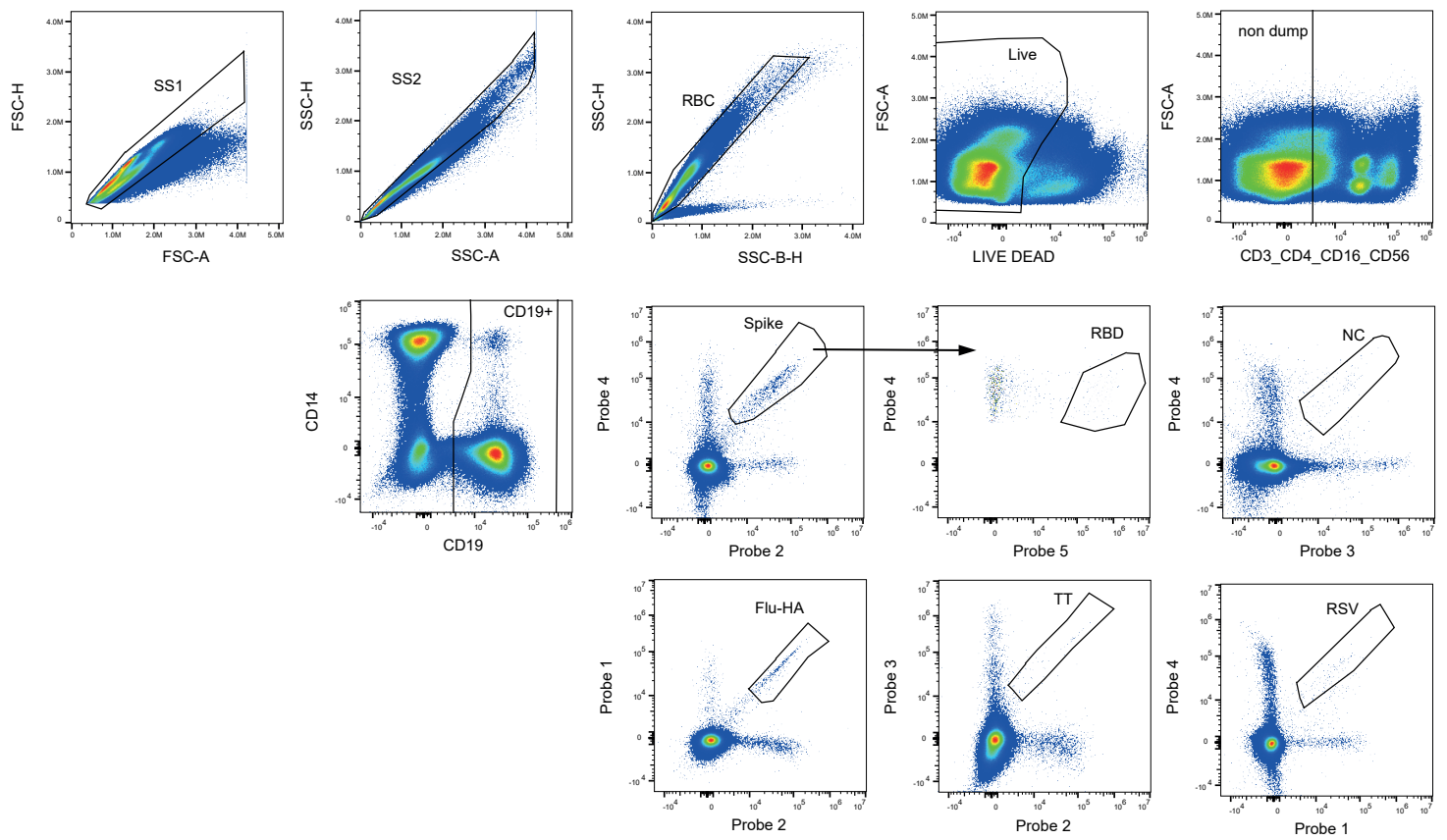
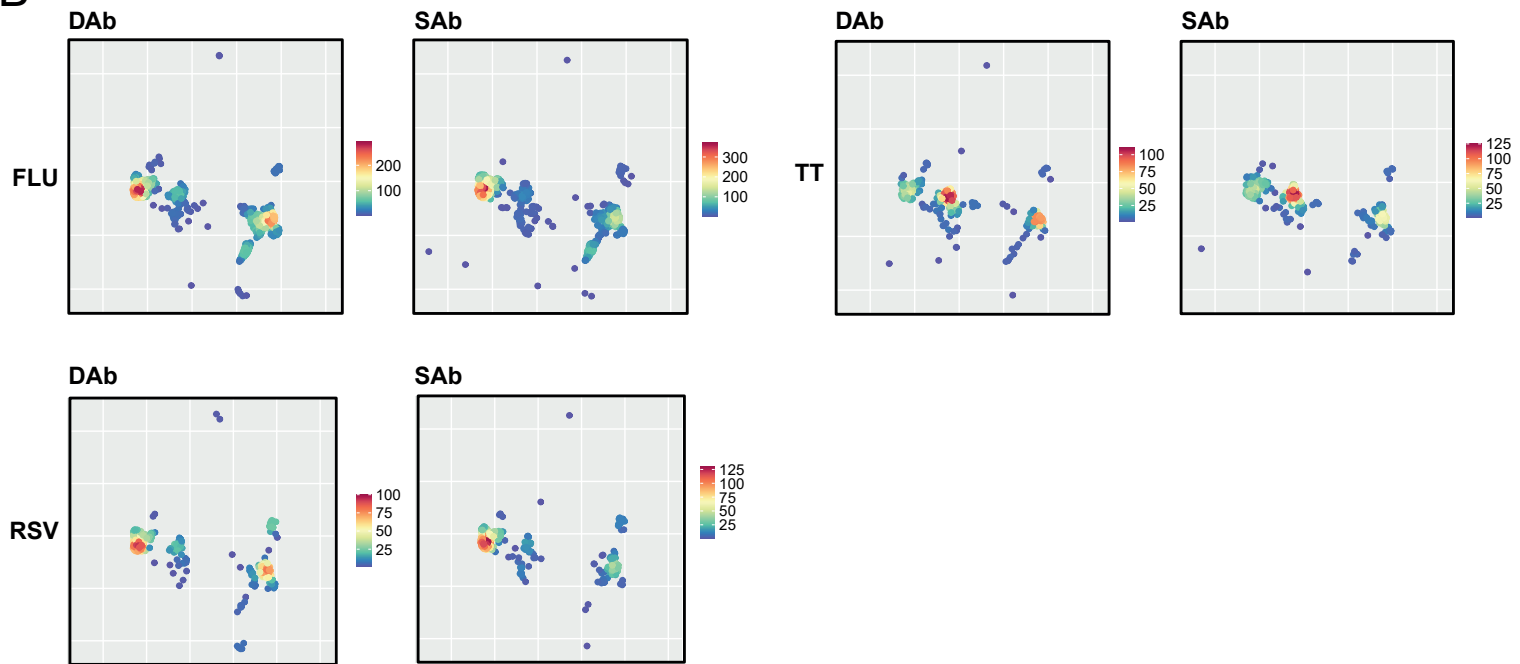


Figure S2

A



B



C

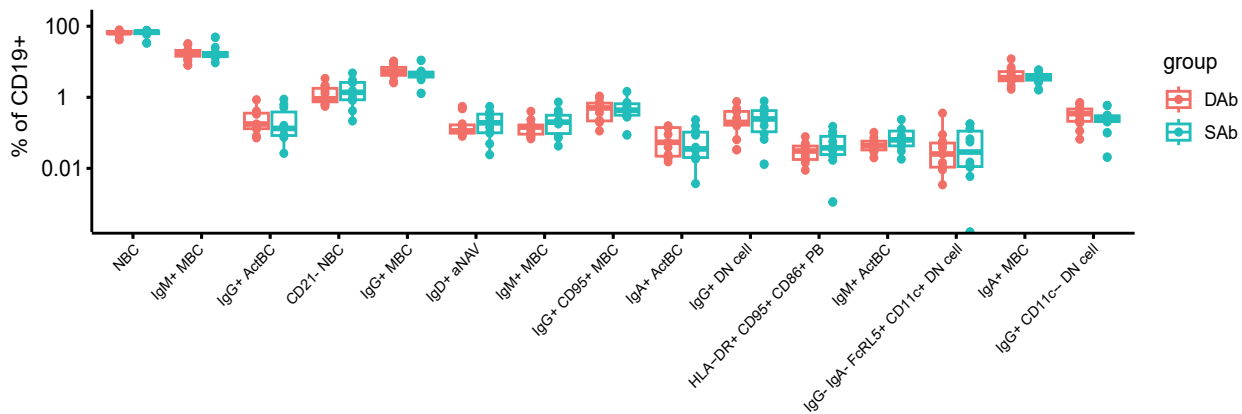


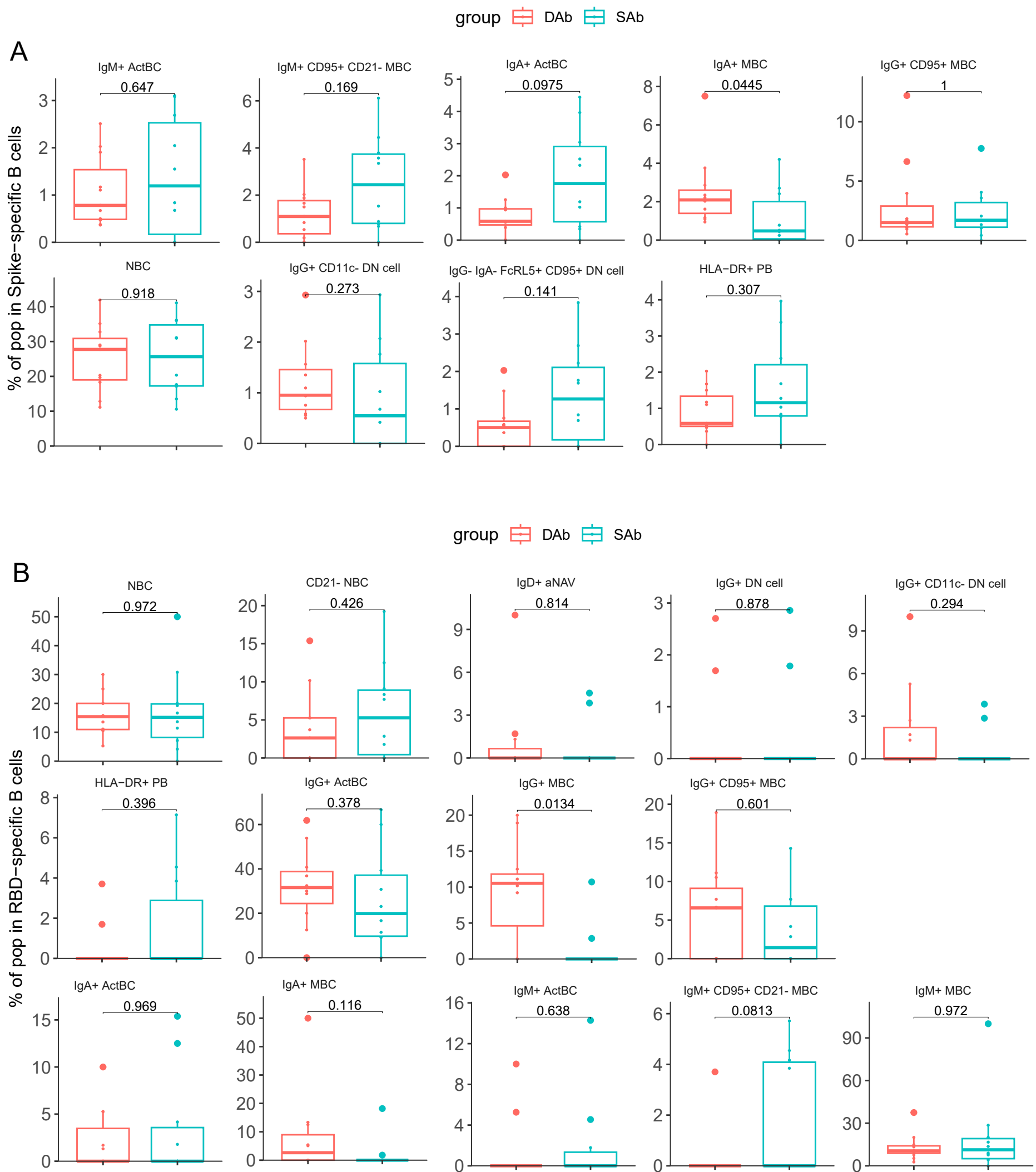
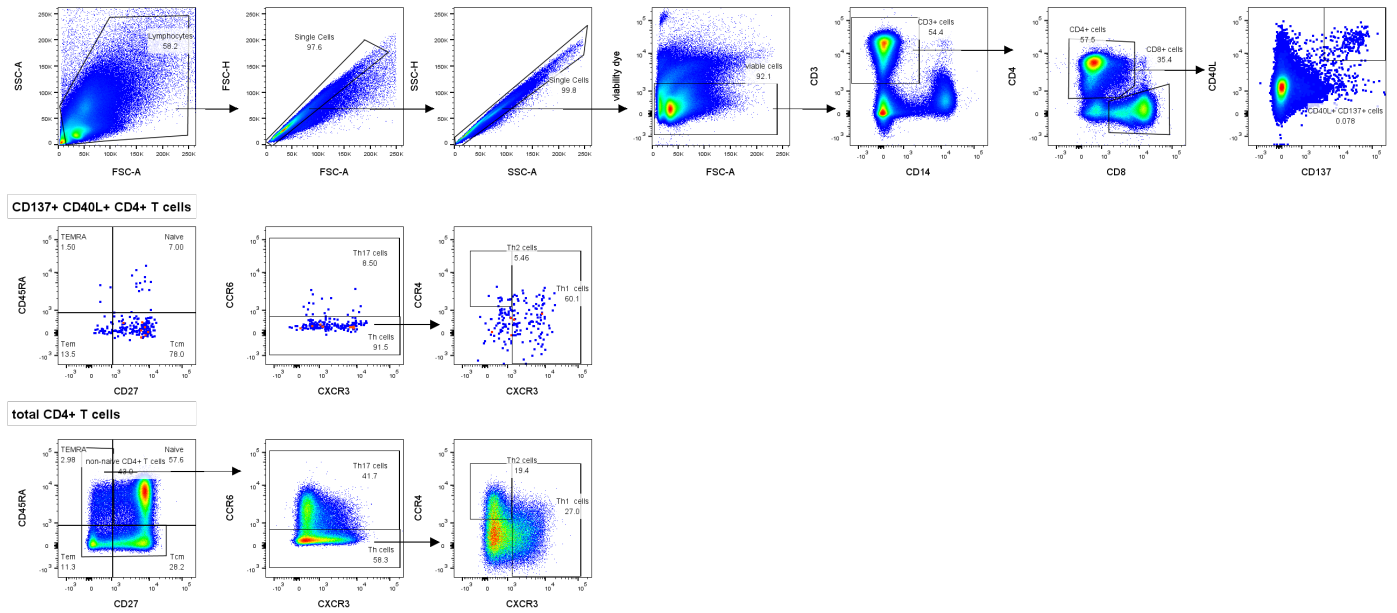
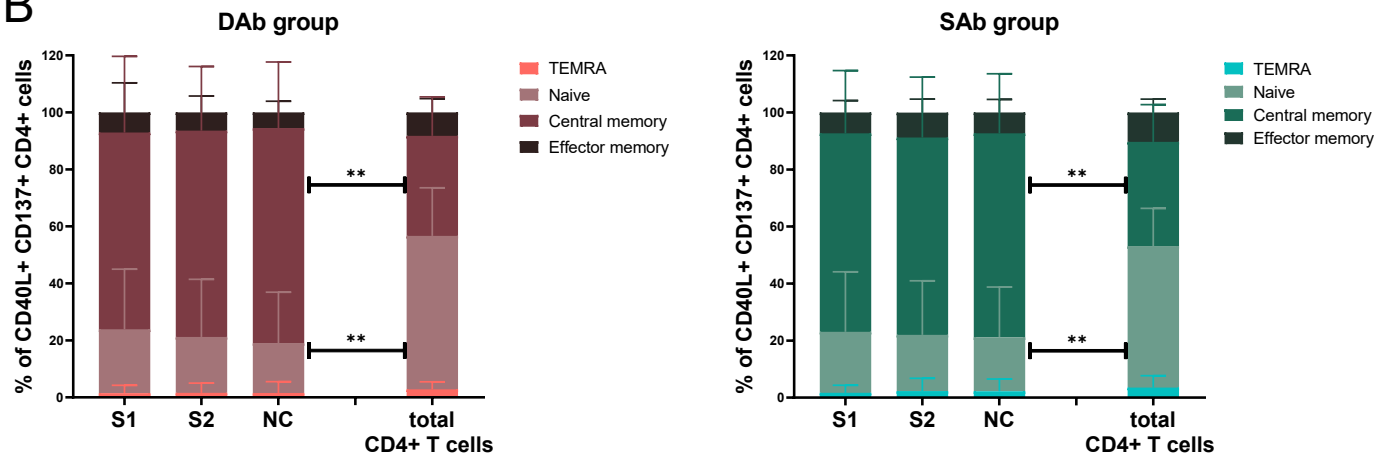
Figure S3

Figure S4

A



B



C

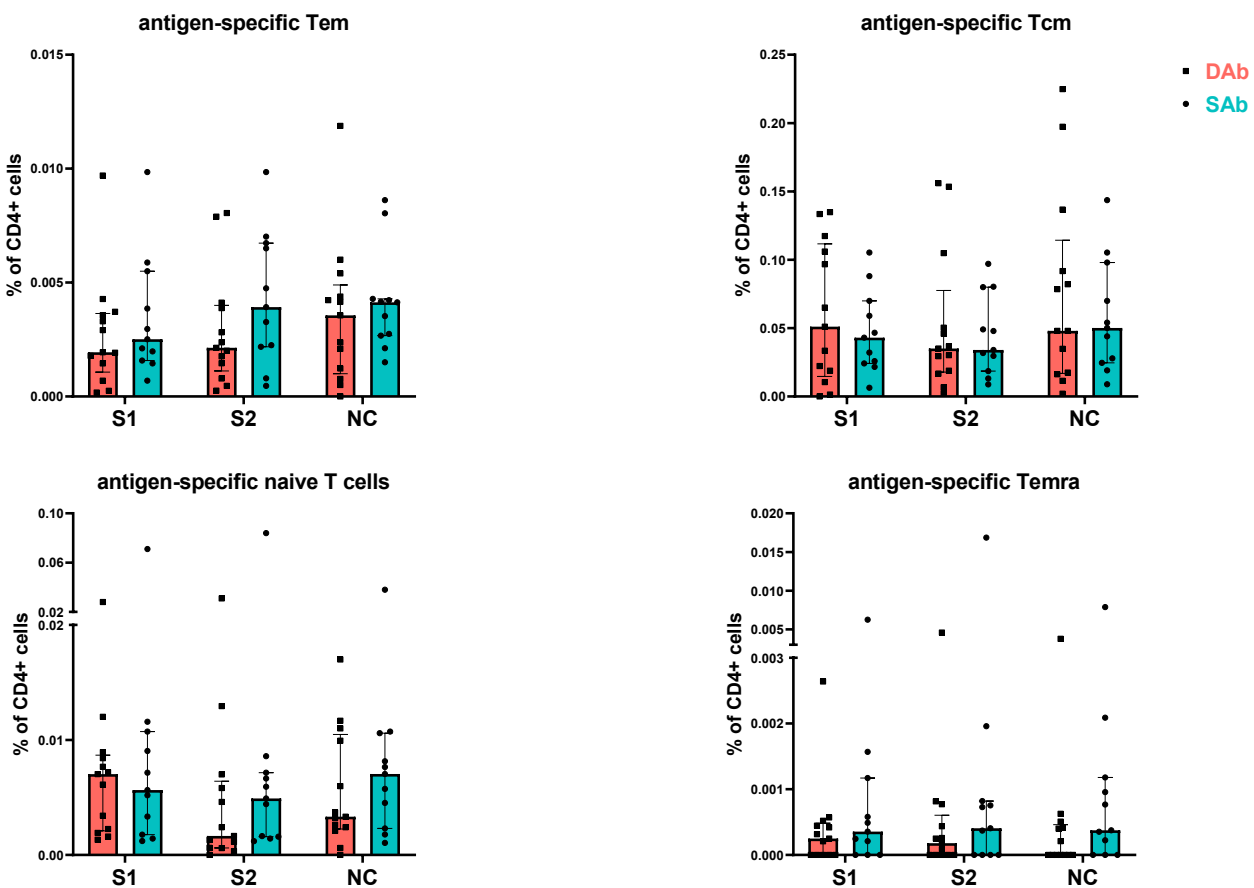
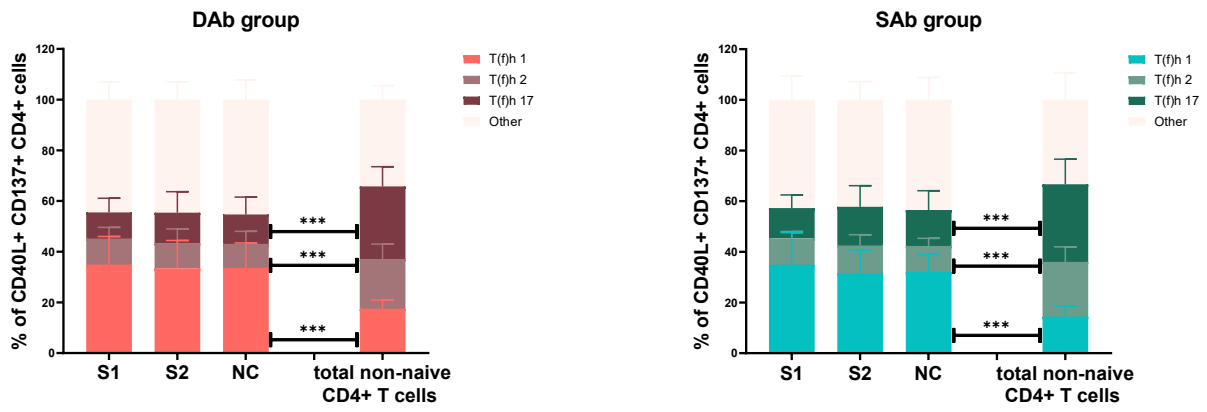


Figure S5

A



B

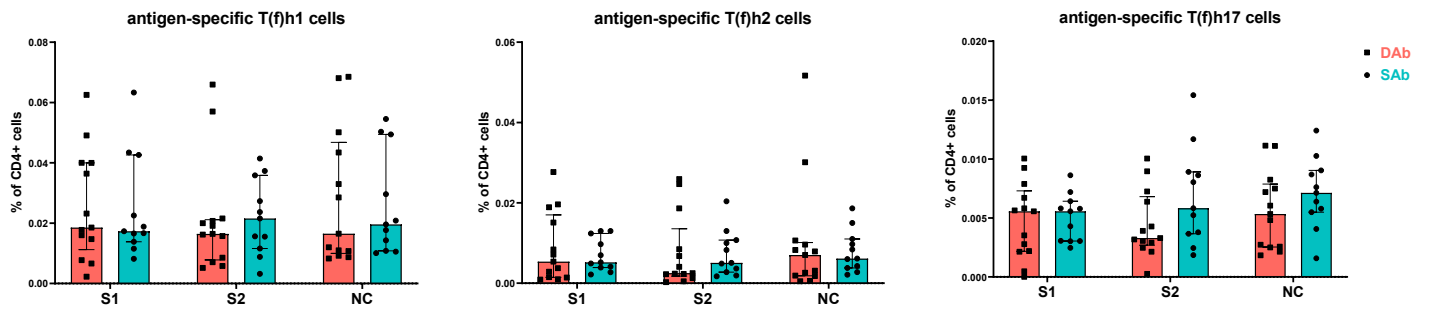


Figure S6

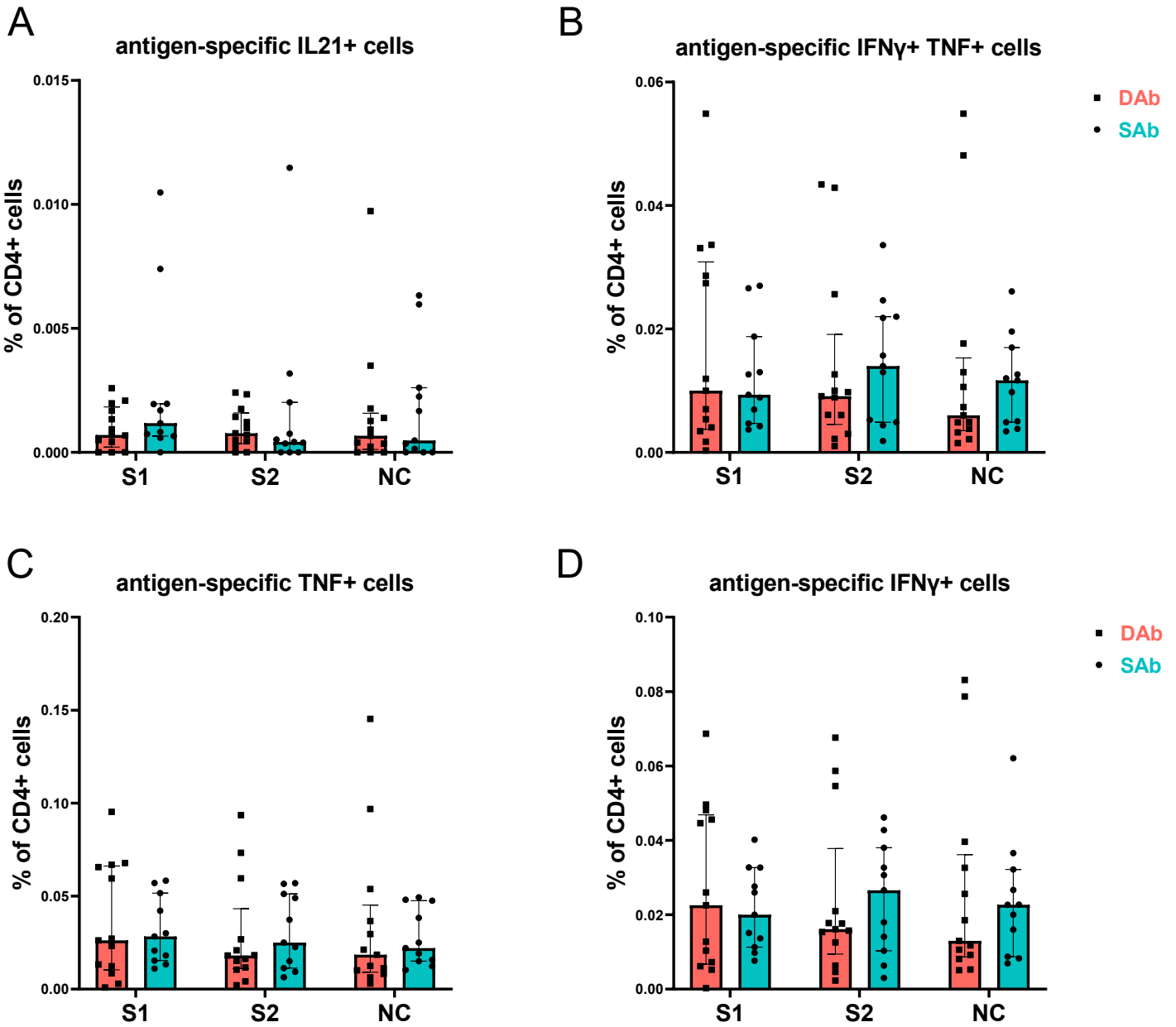


Figure S7

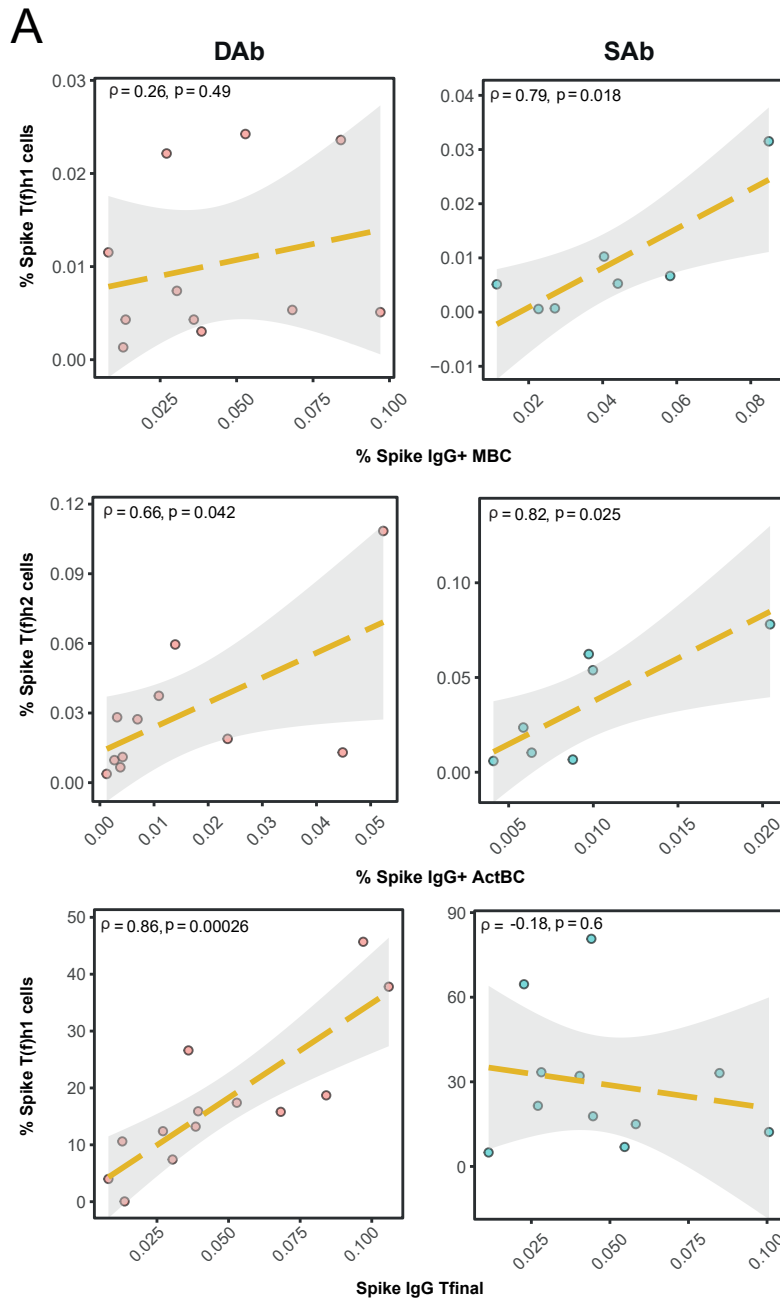


Table S1. Antibodies used in the spectral flow cytometry analysis of B cells

Target	Fluorochrome	Clone	Source	Catalog No	Dilution
CD11b	PerCP-Cy5.5	M1/70	BioLegend	101227	1/80
CD11c	BV605	B-ly6	BD	563930	1/160
CD138	BUV737	MI15	BD	612834	1/100
CD14	Sparkblue550	63D3	BioLegend	367147	1/80
CD16	BV510	3G8	BioLegend	302047	1/80
CD19	BV570	HIB19	BioLegend	302235	1/40
CD20	eFluor450	2H7	Thermofisher	48-0209-41	1/160
CD21	BUV805	B-ly4	BD	742008	1/160
CD24	BUV395	ML5	BD	566221	1/80
CD27	BV480	L128	BD	566188	1/20
CD3	BV510	UCHT1	BioLegend	300447	1/80
CD38	APC-Fire810	HIT2	BioLegend	303549	1/160
CD4	BV510	OKT4	BioLegend	317443	1/80
CD43	BUV661	1G10	BD	750301	1/160
CD45RB	PE	MEM-55	BioLegend	310204	1/80
CD56	BV510	HCD56	BioLegend	318339	1/80
CD71	BV750	M-A712	BD	747308	1/80
CD73	BV650	AD2	BD	742633	1/80
CD86	APC-R700	2331 (FUN-1)	BD	565149	1/320
CD95	PE-Cy5	DX2	BioLegend	305610	1/320
FcRL4	PerCPeFluor710	413D12	Thermofisher	46-3079-42	1/80
FcRL5	BV785	509F6	BD	749602	1/100
HLA-DR	BUV496	G46-6	BD	749866	1/80
IgA	APC-Vio770	IS11-8E10	Miltenyibiotec	130-113-999	1/320
IgD	BUV563	IA6-2	BD	741394	1/160
IgG	PE-CF594	G18-145	BD	562538	1/160
IgM	BV711	MHM-88	Biolegend	314539	1/80

Table S2. Information on probe fluorophores used in the spectral flow cytometry analysis of B cells

Fluorochrome-conjugated SA	Protein	Concentration	Source	Catalog No
Alexa Fluor® 647 Streptavidin	S, NC, G	0.5 mg/ml	BioLegend	405237
BB515 Streptavidin	NC, TT	0.1 mg/ml	BD	564453
BUV615 Streptavidin	HA, G	0.1 mg/ml	BD	613013
Briljant Violet 421™ Streptavidin	S, HA, TT	0.1 mg/ml	BioLegend	405226
PE/Cyanine7 Streptavidin	RBD	0.2 mg/ml	eBioscience	25-4317-82

Table S3. Information on antibodies used in the AIM assay to detect and characterize SARS-CoV-2-specific T cells

Target	Fluorochrome	Clone	Source	Catalog No	Dilution
AF647	IL-21	3A3-N2.1	BD	560493	1:50
APC-H7	HLA-DR	G46-6	BD	561358	1:200
APC-R700	IL-17A	N49-653	BD	565163	1:3200
BB515	CCR6 (CD196)	11A9	BD	564479	1:25
BB700	PD1	EH12.1	BD	566460	1:100
BUV395	CD4	SK3	BD	563550	1:50
BUV496	CD8	RPA-T8	BD	612942	1:50
BUV563	CD27	L128	BD	748705	1:400
BUV615	CD14	M5E2	BD	751150	1:100
BUV661	ICOS (CD278)	DX29	BD	741664	1:25
BUV737	CD69	FN56	BD	612817	1:100
BUV805	CD3	SK7	BD	612893	1:200
BV421	CD40L (CD154)	24-31	Biolegend	310824	1:100
BV480	IFN γ	B27	BD	566100	1:50
BV605	CCR4 (CD194)	1G1	BD	562906	1:50
BV650	TNF	MAb11	BD	563418	1:400
BV711	CXCR5 (CD185)	RF8B2	BD	740737	1:200
BV750	CD38	HIT2	BD	746909	1:50
BV786	CD45RA	HI100	BD	563870	1:400
FVS575V	viability		BD	565694	1:400
PE	IL-4	8D4-8	BD	559333	1:50
PE-Cy5	CD137 (4-1BB)	4B4-1	BD	551137	1:200
PE-Cy7	CXCR3 (CD183)	1C6	BD	560831	1:25