

Supporting Information

Measurement for the Main Constructs

Table A1: Confirmatory Factor Analysis results for Emotion Items

	Model			
	Estimate	Std. Err.	z	p
<u>Factor Loadings</u>				
<u>Compassion</u>				
Affection	1.00 ⁺			
Warmth	1.14	0.05	24.20	.000
Approval	0.91	0.04	20.31	.000
Embracement	1.06	0.05	22.50	.000
Compassion	1.06	0.05	20.19	.000
<u>Anger</u>				
Anger	1.00 ⁺			
Hate	1.00	0.04	26.13	.000
Hostility	0.70	0.03	21.86	.000
<u>Anxiety</u>				
Fear	1.00 ⁺			
Anxiety	1.30	0.11	11.43	.000
<u>Intercepts</u>				
Affection	2.35	0.05	49.83	.000
Warmth	2.28	0.05	49.53	.000
Approval	2.10	0.05	46.15	.000
Embracement	2.13	0.05	47.15	.000
Compassion	2.72	0.05	50.66	.000
Anger	2.85	0.06	49.30	.000
Hate	2.46	0.05	46.67	.000
Hostility	2.34	0.05	45.67	.000
Fear	3.28	0.06	53.90	.000
Anxiety	4.08	0.06	63.25	.000
<u>Residual Variances</u>				
Affection	1.40	0.07	20.40	.000
Warmth	0.87	0.05	16.15	.000
Approval	1.46	0.07	21.36	.000
Embracement	1.02	0.06	18.24	.000
Compassion	2.05	0.10	21.47	.000
Anger	1.37	0.10	13.57	.000
Hate	0.70	0.09	7.98	.000
Hostility	1.87	0.09	21.94	.000

Fear	2.15	0.22	9.91	.000
Anxiety	1.02	0.34	2.99	.003

Latent Variances

Compassion	1.31	0.10	12.90	.000
Anger	2.71	0.18	15.33	.000
Anxiety	2.39	0.26	9.34	.000

Latent Covariances

Compassion with Anger	0.18	0.06	2.75	.006
Compassion with Anxiety	-0.43	0.06	-6.77	.000
Anger with Anxiety	0.90	0.14	6.46	.000

Fit Indices

$\chi^2(df)$	378.99(32)			.000
CFI	0.93			
TLI	0.90			
RMSEA	0.09			

*Fixed parameter

Table A2: Confirmatory Factor Analysis results for Pro- and Anti-Refugee Proposals

	Model			
	Estimate	Std. Err.	z	p
<u>Factor Loadings</u>				
<u>Anti-Refugee Proposals</u>				
Panhandling	1.00 ⁺			
Repatriation	0.95	0.15	6.22	.000
Spread Disease	1.46	0.32	4.64	.000
<u>Pro-Refugee Proposals</u>				
Equal Social Services	1.00 ⁺			
The Right to Work	1.39	0.10	14.28	.000
Citizenship for Investment	1.12	0.07	15.04	.000
<u>Intercepts</u>				
Panhandling	4.40	0.03	146.98	.000
Repatriation	4.28	0.03	130.66	.000
Spread Disease	3.56	0.04	98.61	.000
Equal Social Services	2.48	0.04	63.99	.000
The Right to Work	2.35	0.04	61.69	.000
Citizenship for Investment	2.05	0.04	52.16	.000
<u>Residual Variances</u>				
Panhandling	0.89	0.06	16.01	.000
Repatriation	1.13	0.06	18.64	.000
Spread Disease	1.13	0.10	11.44	.000
Equal Social Services	1.22	0.06	19.64	.000
The Right to Work	0.59	0.07	7.94	.000
Citizenship for Investment	1.09	0.06	17.33	.000
<u>Latent Variances</u>				
Anti-Refugee Proposals	0.19	0.05	3.82	.000
Pro-Refugee Proposals	0.60	0.07	9.09	.000
<u>Latent Covariances</u>				
Anti-Refugee Proposals w/Pro-Refugee Proposals	-0.12	0.02	-5.44	.000
<u>Fit Indices</u>				
$\chi^2(df)$	63.25(8)			.000
CFI	0.94			
TLI	0.89			
RMSEA	0.08			

⁺Fixed parameter

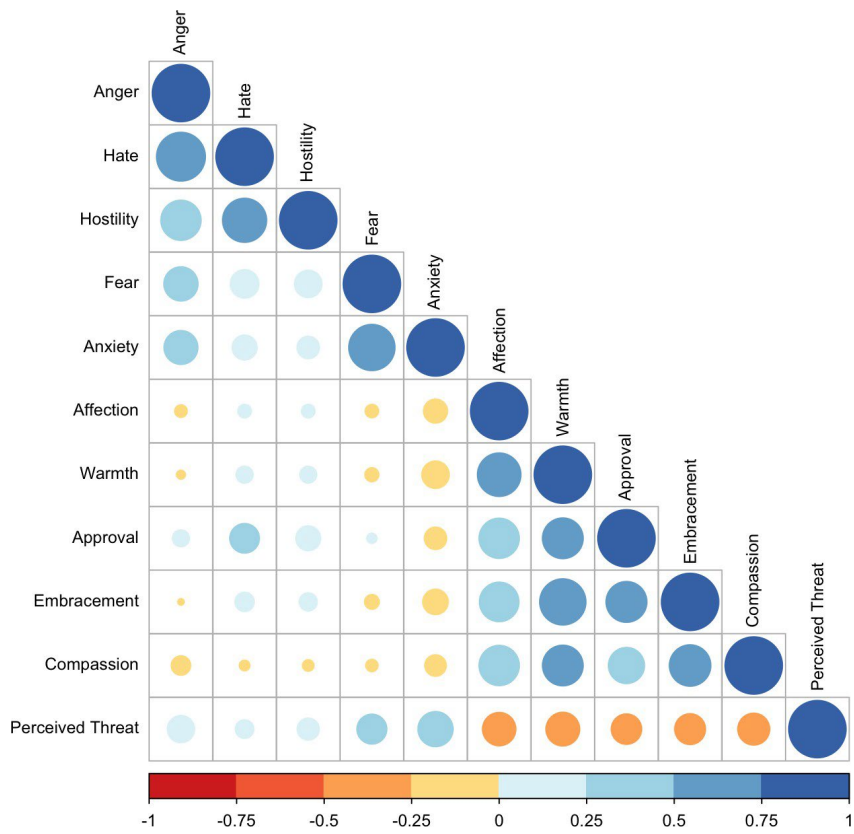


Figure A1: Correlation plot for all emotion items and perceived threat.

Tables Reporting the Full Results and Additional Tests

Table A3: Models on Social Distance

	Model 1	Model 2	Model 3	Model 4
Compassion	-0.490*** (0.026)	-0.357*** (0.028)	-0.260*** (0.056)	-0.245*** (0.057)
Anger	0.179*** (0.020)	0.145*** (0.020)	0.256*** (0.075)	0.286*** (0.084)
Anxiety	0.140*** (0.018)	0.0796*** (0.018)	0.0555 (0.068)	0.0640 (0.068)
Perceived threat		0.280*** (0.026)	0.351*** (0.044)	0.368*** (0.044)
Contact		-0.0178 (0.023)		-0.0234 (0.023)
Female		0.00920 (0.011)		0.00920 (0.011)
Age		0.0139 (0.028)		0.0165 (0.028)
Income		-0.0707* (0.036)		-0.0758* (0.036)
Education		0.0272 (0.028)		0.0315 (0.028)
Ethnic minority		-0.0436** (0.015)		-0.0424** (0.015)
AKP vote		-0.00727 (0.015)		-0.00884 (0.015)
CHP vote		-0.00117 (0.016)		-0.00417 (0.017)
HDP vote		0.0301 (0.024)		0.0287 (0.024)
MHP vote		0.0102 (0.021)		0.00773 (0.021)
Anger X Perceived threat			-0.161+ (0.095)	-0.198+ (0.106)
Anxiety X Perceived threat			0.0241 (0.084)	0.00986 (0.083)
Compassion X Perceived threat			-0.185* (0.080)	-0.200* (0.083)
Constant	0.682*** (0.013)	0.524*** (0.031)	0.462*** (0.031)	0.472*** (0.039)
N	1215	1137	1210	1137
R ²	0.338	0.422	0.415	0.428

Standard errors in parentheses; + $p < .10$, * $p < .05$, ** $p < .01$, *** $p < .001$

Table A4: Models on Anti-refugee Attitudes

	Model 1	Model 2	Model 3	Model 4
Compassion	-0.176*** (0.027)	-0.0880** (0.030)	0.0491 (0.067)	0.0522 (0.064)
Anger	0.00945 (0.022)	-0.0316 (0.023)	-0.141 (0.097)	-0.170 (0.105)
Anxiety	0.118*** (0.018)	0.0633** (0.019)	0.0569 (0.078)	-0.0264 (0.080)
Perceived threat		0.190*** (0.029)	0.171*** (0.050)	0.155** (0.050)
Contact		-0.0483* (0.022)		-0.0403+ (0.022)
Female		0.00319 (0.011)		0.00121 (0.011)
Age		0.0016 (0.028)		-0.0023 (0.028)
Income		0.0693* (0.029)		0.0844** (0.029)
Education		-0.0230 (0.024)		-0.0219 (0.024)
Ethnic minority		-0.0138 (0.016)		-0.0169 (0.016)
AKP vote		-0.0191 (0.015)		-0.0207 (0.014)
CHP vote		0.0127 (0.016)		0.00728 (0.016)
HDP vote		0.0536* (0.025)		0.0462+ (0.024)
MHP vote		-0.00368 (0.021)		-0.00947 (0.021)
Anger X Perceived threat			0.192 (0.119)	0.210 (0.128)
Anxiety X Perceived threat			0.0440 (0.097)	0.133 (0.100)
Compassion X Perceived threat			-0.250* (0.097)	-0.233* (0.094)
Constant	0.756*** (0.012)	0.665*** (0.032)	0.641*** (0.034)	0.677*** (0.042)
N	1215	1135	1209	1135
R ²	0.237	0.291	0.297	0.307

Standard errors in parentheses; + $p < .10$, * $p < .05$, ** $p < .01$, *** $p < .001$

Table A5: Models on Pro-refugee Attitudes

	Model 1	Model 2	Model 3	Model 4
Compassion	0.555*** (0.033)	0.443*** (0.039)	0.157* (0.075)	0.151* (0.075)
Anger	-0.147*** (0.026)	-0.122*** (0.027)	-0.0531 (0.092)	-0.134 (0.096)
Anxiety	-0.0611** (0.021)	-0.0134 (0.023)	0.0150 (0.076)	0.0401 (0.079)
Perceived threat		-0.243*** (0.032)	-0.324*** (0.054)	-0.342*** (0.054)
Contact		0.00435 (0.028)		0.00171 (0.029)
Female		0.00276 (0.014)		0.00423 (0.014)
Age		0.00217 (0.004)		0.0018 (0.003)
Income		0.00838 (0.041)		0.00140 (0.041)
Education		0.0431 (0.033)		0.0361 (0.033)
Ethnic minority		-0.0136 (0.020)		-0.0116 (0.020)
AKP vote		0.00682 (0.019)		0.00973 (0.019)
CHP vote		-0.0116 (0.020)		-0.00273 (0.020)
HDP vote		0.0114 (0.031)		0.0202 (0.031)
MHP vote		0.0222 (0.027)		0.0295 (0.027)
Anger X Perceived threat			-0.0953 (0.116)	0.00603 (0.121)
Anxiety X Perceived threat			-0.0352 (0.094)	-0.0684 (0.098)
Compassion X Perceived threat			0.496*** (0.115)	0.502*** (0.116)
Constant	0.269*** (0.016)	0.405*** (0.037)	0.481*** (0.039)	0.475*** (0.047)
N	1215	1135	1209	1135
R ²	0.237	0.291	0.297	0.307

Standard errors in parentheses; + $p < .10$, * $p < .05$, ** $p < .01$, *** $p < .001$

Table A6: Models on EU-Turkey Deal

	Model 1	Model 2	Model 3	Model 4
Compassion	2.173*** (0.253)	1.384*** (0.312)	-0.470 (0.504)	-0.681 (0.542)
Anger	-0.202 (0.236)	0.112 (0.245)	0.458 (0.641)	0.626 (0.664)
Anxiety	-1.055*** (0.201)	-0.764*** (0.218)	-0.332 (0.572)	-0.335 (0.596)
Perceived threat		-1.444*** (0.277)	-2.041*** (0.481)	-2.046*** (0.499)
Contact		-0.782** (0.261)		-0.820** (0.262)
Female		-0.125 (0.127)		-0.118 (0.128)
Age		0.186 (0.308)		0.161 (0.314)
Income		0.219 (0.371)		0.183 (0.375)
Education		0.257 (0.295)		0.208 (0.296)
Ethnic minority		0.356+ (0.197)		0.383+ (0.197)
AKP vote		0.114 (0.178)		0.152 (0.182)
CHP vote		-0.0921 (0.211)		0.00425 (0.217)
HDP vote		-0.253 (0.297)		-0.151 (0.296)
MHP vote		0.0321 (0.232)		0.0861 (0.237)
Anger X Perceived threat			-0.845 (0.906)	-0.919 (0.958)
Anxiety X Perceived threat			-0.697 (0.792)	-0.668 (0.829)
Compassion X Perceived threat			3.728*** (0.852)	3.832*** (0.913)
N	1100	1033	1093	1033

Cuts omitted, standard errors in parentheses; + $p < .10$, * $p < .05$, ** $p < .01$, *** $p < .001$

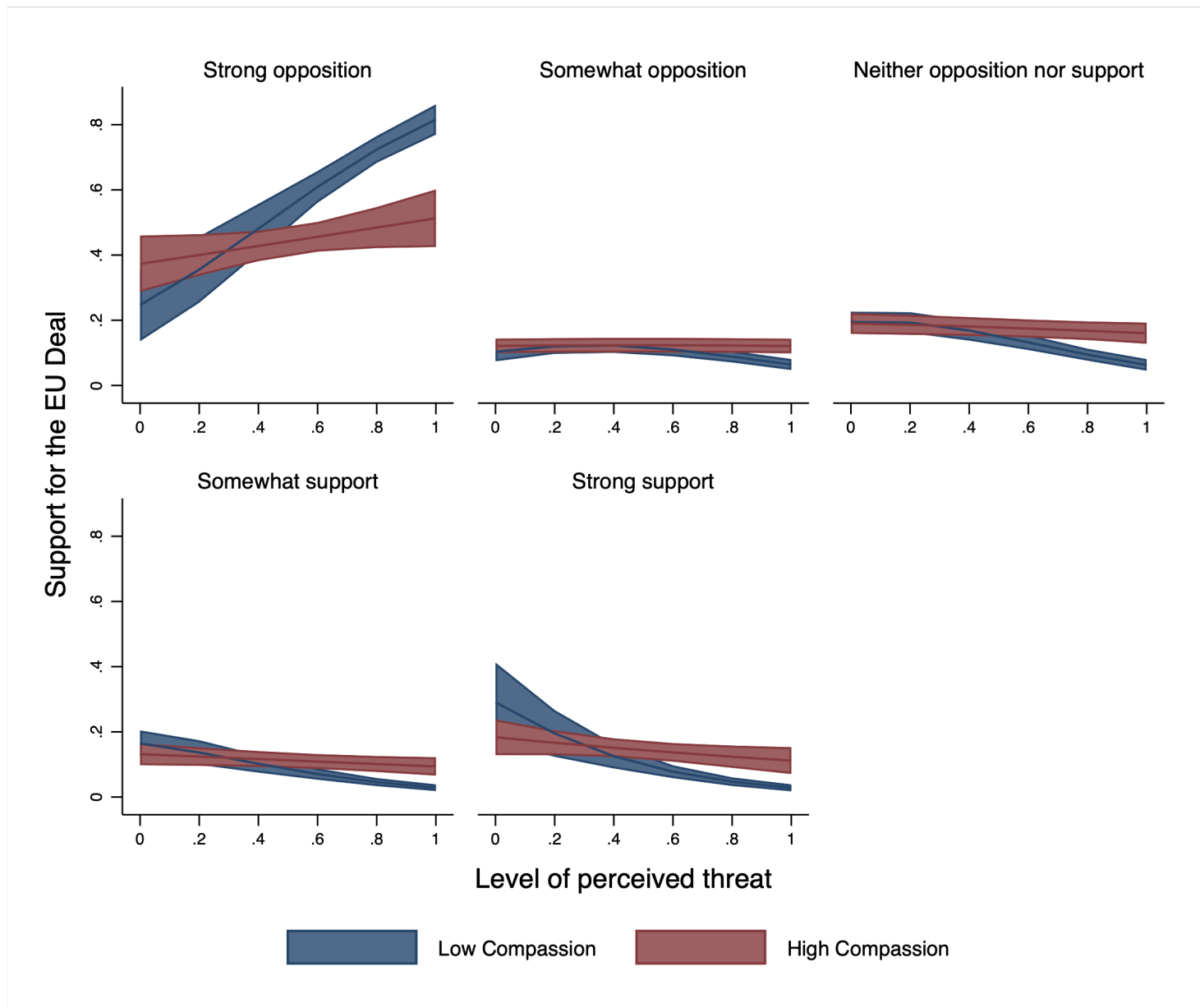


Figure A2: *The interaction of threat perception and compassion on support for the refugee flow.* This figure shows the influence of compassion at every level of response for the EU Deal item.

Table A7: Models on Support for Incoming Refugee Flow

	Model 1	Model 2	Model 3	Model 4
Compassion	3.908*** (0.310)	2.867*** (0.390)	0.120 (0.631)	0.0348 (0.645)
Anger	-0.536+ (0.274)	-0.350 (0.323)	-1.189 (0.828)	-1.596+ (0.888)
Anxiety	-1.140*** (0.222)	-0.515+ (0.264)	0.272 (0.753)	1.052 (0.744)
Perceived threat		-2.646*** (0.319)	-4.028*** (0.601)	-4.053*** (0.625)
Contact		0.142 (0.293)		0.136 (0.290)
Female		-0.126 (0.151)		-0.105 (0.152)
Age		-0.0712 (0.362)		-0.0661 (0.367)
Income		-0.0885 (0.456)		-0.101 (0.469)
Education		-0.00912 (0.363)		-0.149 (0.366)
Ethnic minority		-0.000239 (0.211)		-0.0213 (0.210)
AKP vote		-0.00543 (0.188)		0.0445 (0.195)
CHP vote		-0.821** (0.257)		-0.671* (0.265)
HDP vote		-1.128** (0.379)		-1.060** (0.364)
MHP vote		-0.0834 (0.266)		0.0450 (0.277)
Anger X Perceived threat			1.304 (1.257)	1.647 (1.380)
Anxiety X Perceived threat			-1.433 (1.120)	-2.496* (1.142)
Compassion X Perceived threat			5.812*** (1.081)	5.793*** (1.119)
N	1177	1102	1170	1102

Cuts omitted, standard errors in parentheses; + $p < .10$, * $p < .05$, ** $p < .01$, *** $p < .001$

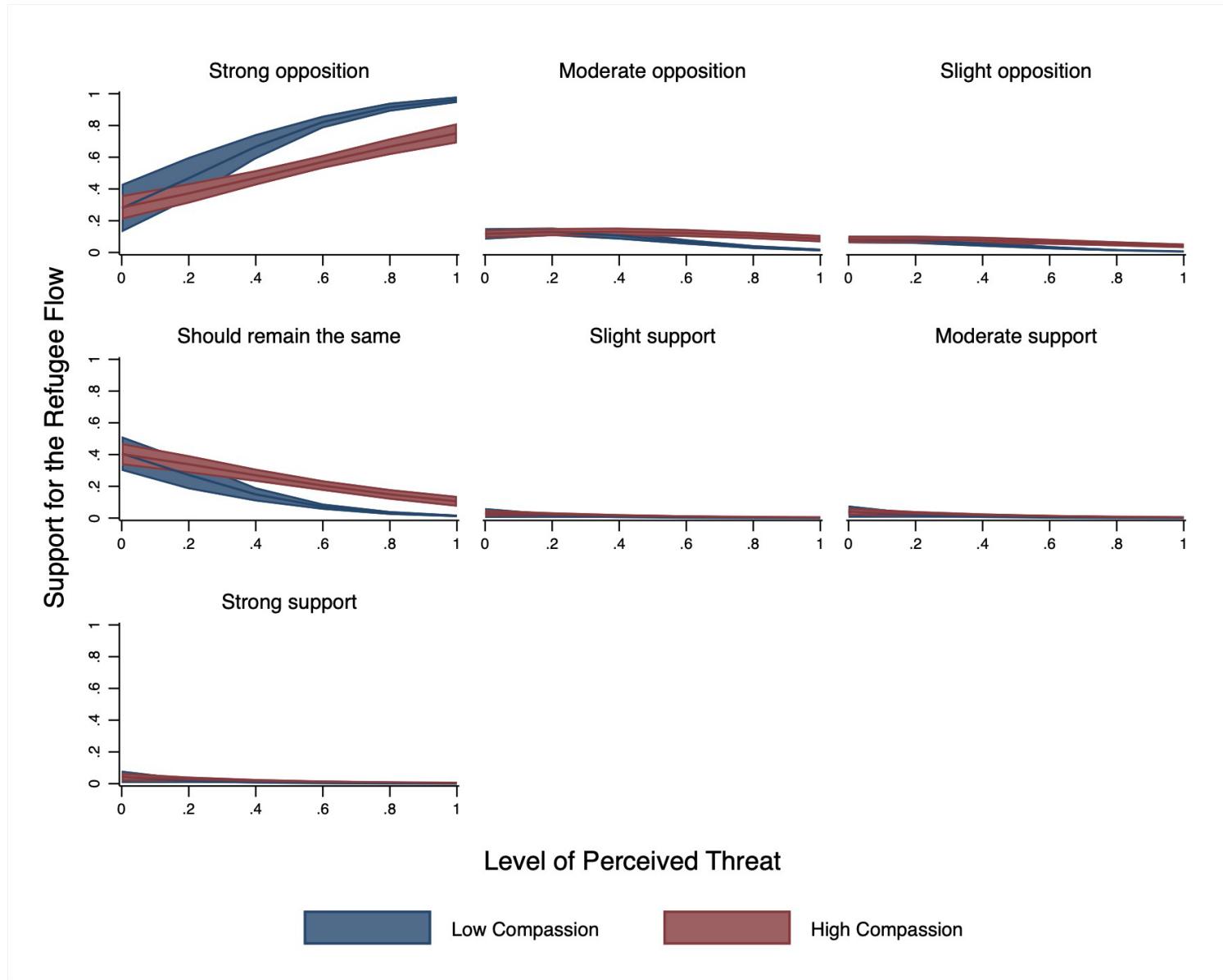


Figure A3: *The interaction of threat perception and compassion on support for the refugee flow.* This figure shows the influence of compassion at every level of response for the item on refugee flow.

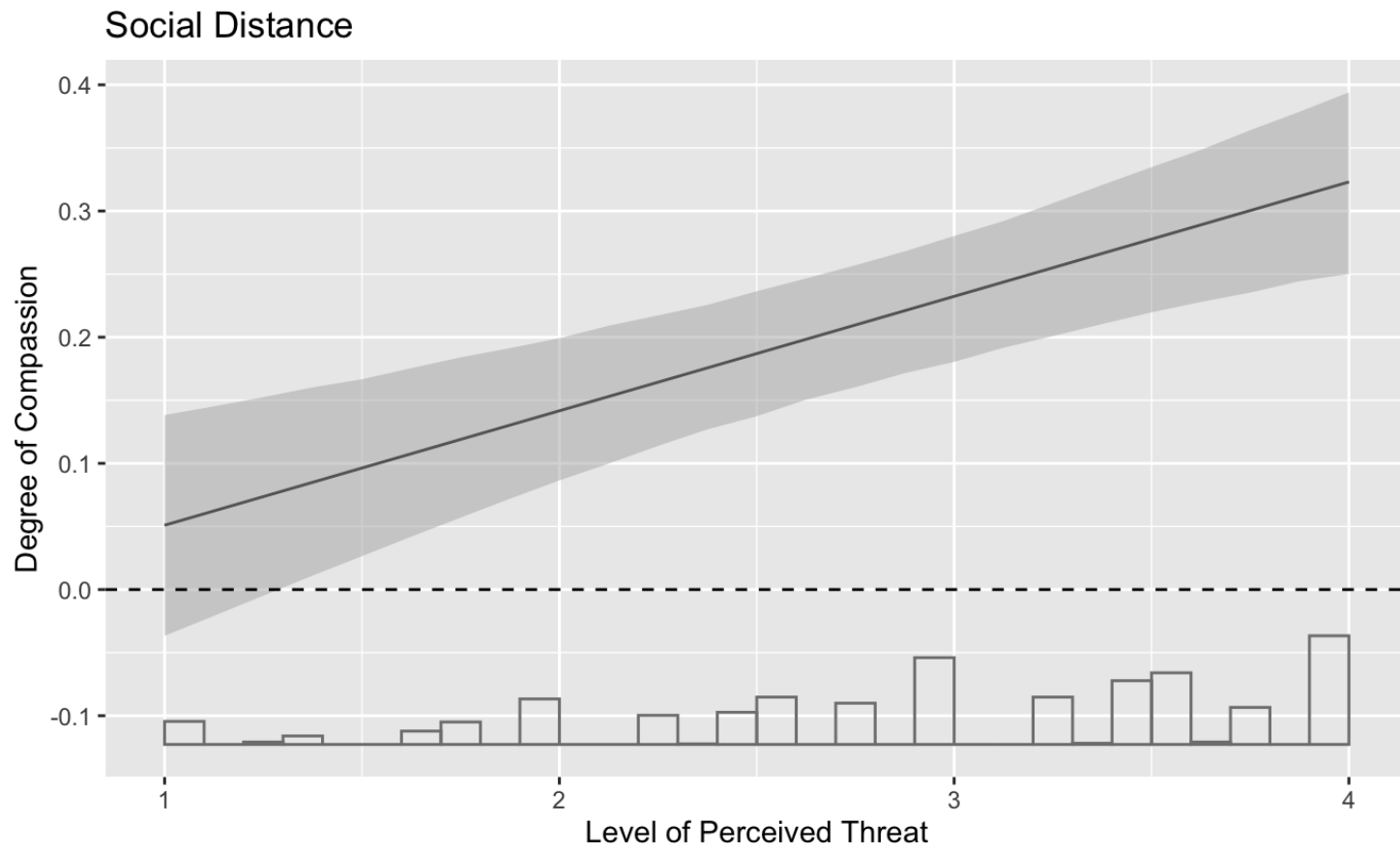


Figure A4: *The interaction of threat perception and compassion on social distance.*

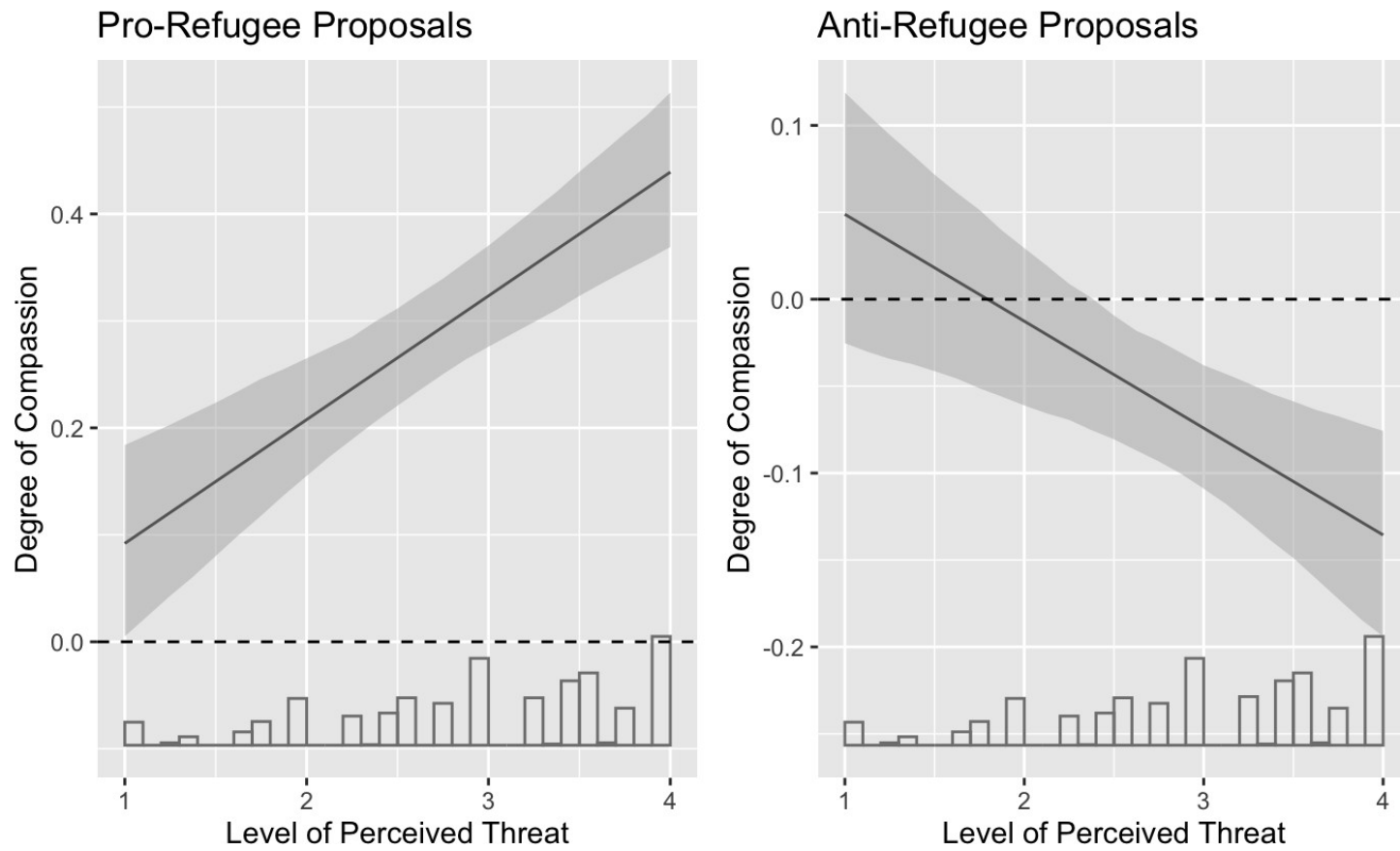


Figure A5: *The interaction of threat perception and compassion on pro-and anti-refugee proposals.*

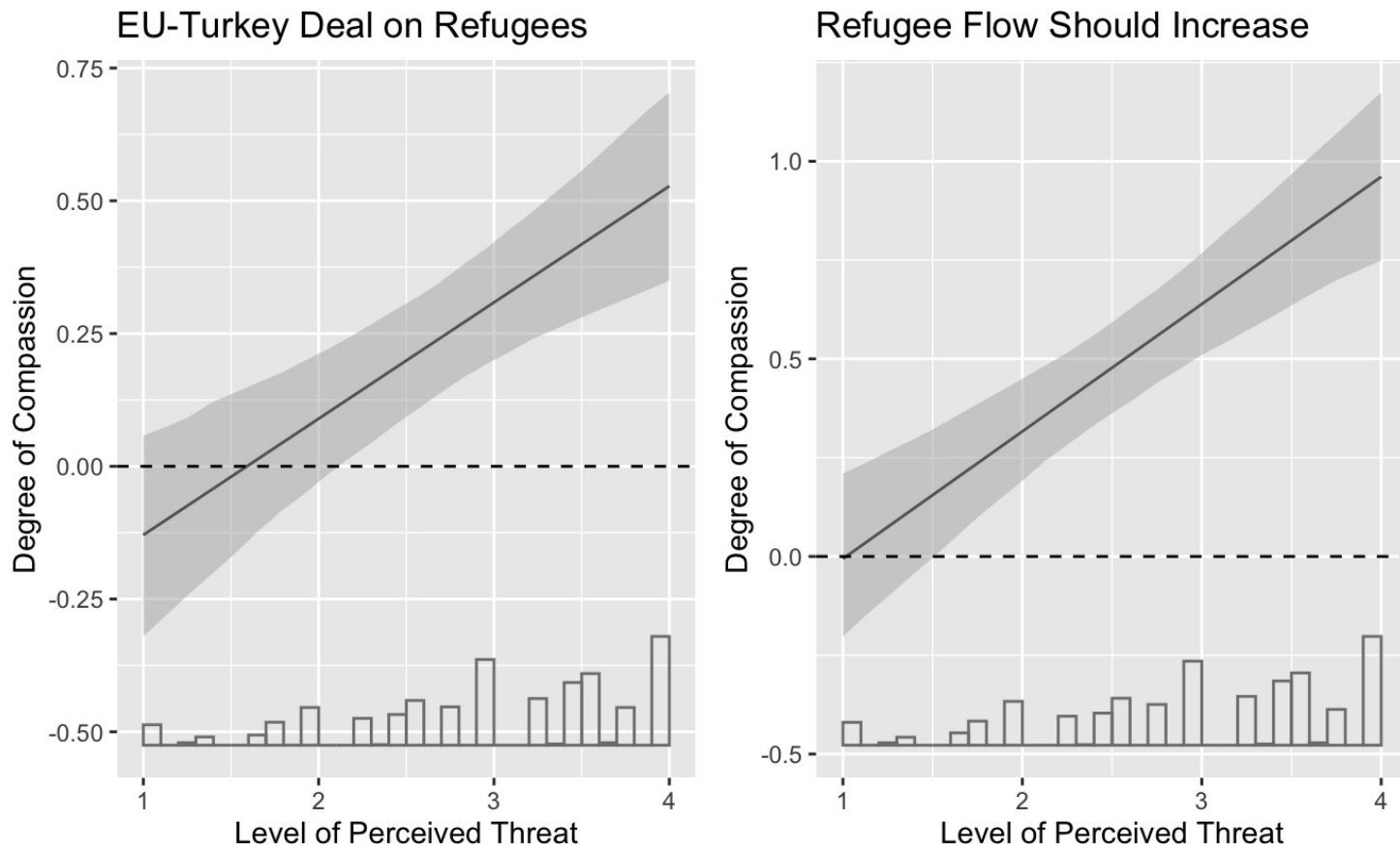


Figure A6: *The interaction of threat perception and compassion on the two governmental policy preferences.*