

Appendix 2

Spatio-temporal assessment of illicit drug use at large scale: evidence from seven years of international wastewater monitoring

Authors:

Iria González-Mariño^{1,2,*}, Jose Antonio Baz-Lomba³,
Nikiforos A. Alygizakis⁴, Maria Jesús Andrés-Costa⁵, Richard Bade⁶, Anne Bannwarth⁷, Leon P. Barron⁸,
Frederic Been⁹, Lisa Benaglia⁷, Jean-Daniel Berset¹⁰, Lubertus Bijlsma¹¹, Igor Bodík¹², Asher Brenner¹³,
Andreas L. Brock¹⁴, Daniel A. Burgard¹⁵, Erika Castrignanò^{16,17}, Alberto Celma¹¹, Christophoros E.
Christophoridis¹⁸, Adrian Covaci¹⁹, Olivier Delémont⁷, Pim de Voogt^{9,20}, Damien A. Devault²¹, Mário J.
Dias²², Erik Emke⁹, Pierre Esseiva⁷, Despo Fatta-Kassinos²³, Ganna Fedorova²⁴, Konstantinos
Fytianos¹⁸, Cobus Gerber⁶, Roman Grabic²⁴, Emma Gracia-Lor^{25,26}, Stefan Grüner²⁷, Teemu Gunnar²⁸,
Evroula Hapeshi²³, Ester Heath²⁹, Björn Helm²⁷, Félix Hernández¹¹, Aino Kankaanpää²⁸, Sara Karolak²¹,
Barbara Kasprzyk-Hordern¹⁶, Ivona Krizman-Matasic³⁰, Foon Yin Lai³¹, Wojciech Lechowicz³², Alvaro
Lopes³³, Miren López de Alda³⁴, Ester López-García³⁴, Arndís S.C. Löve³⁵, Nicola Mastroianni³⁴, Gillian
L. McEneff⁸, Rosa Montes¹, Kelly Munro⁸, Thomas Nefau²¹, Herbert Oberacher³⁶, Jake W. O'Brien³⁷,
Reinhard Oertel³⁸, Kristin Olafsdottir³⁵, Yolanda Picó⁵, Benedek G. Plósz^{14,39}, Fabio Polesel¹⁴, Cristina
Postigo³⁴, José Benito Quintana¹, Pedram Ramin^{14,40}, Malcolm J. Reid³, Jack Rice¹⁶, Rosario Rodil¹,
Noelia Salgueiro-González²⁵, Sara Schubert³⁸, Ivan Senta³⁰, Susana M. Simões²², Maja M. Sremacki⁴¹,
Katarzyna Styszko⁴², Senka Terzic³⁰, Nikolaos S. Thomaidis⁴, Kevin V. Thomas^{3,37}, Ben J. Tschärke³⁷,
Robin Udrisard⁷, Alexander L.N. van Nuijs¹⁹, Viviane Yargeau⁴³, Ettore Zuccato²⁵,
Sara Castiglioni^{25,*}, Christoph Ort⁴⁴

*Corresponding authors:

Iria González-Mariño: Tel: +34 881 816 035; e-mail: iria.gonzalez@usc.es, iriagonzalez@usal.es

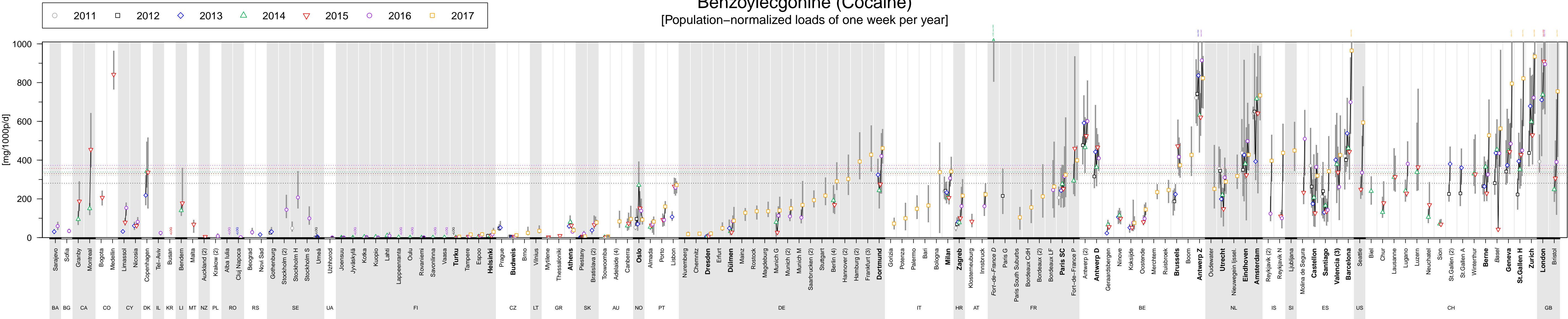
Sara Castiglioni: Tel: +39 02 39014776; e-mail: sara.castiglioni@marionegri.it

1. Institute for Food Analysis and Research, Department of Analytical Chemistry, Universidade de Santiago de Compostela, Santiago de Compostela, Spain
2. Faculty of Chemical Sciences, Department of Analytical Chemistry, Nutrition and Bromatology, University of Salamanca, Salamanca, Spain
3. Norwegian Institute for Water Research (NIVA), Oslo, Norway
4. Department of Chemistry, Laboratory of Analytical Chemistry, National and Kapodistrian University of Athens, Athens, Greece
5. Food and Environmental Safety Research Group, University of Valencia, Moncada, Spain
6. School of Pharmacy and Medical Sciences, University of South Australia, Adelaide, SA, Australia
7. Ecole des Sciences Criminelles, University of Lausanne, Lausanne, Switzerland
8. King's Forensics, School of Population Health and Environmental Sciences, King's College London, London, United Kingdom
9. KWR Water Research Institute, Nieuwegein, Netherlands
10. University of Bern, Institute of Plant Sciences, Bern, Switzerland
11. Research Institute for Pesticides and Water, University Jaume I, Castellón, Spain
12. Department of Environmental Engineering, Faculty of Chemical and Food Technology, Slovak University of Technology, Bratislava, Slovakia
13. Unit of Environmental Engineering, Ben-Gurion University of the Negev, Beer-Sheva, Israel
14. Department of Environmental Engineering, Technical University of Denmark, Kongens Lyngby, Denmark
15. University of Puget Sound, Tacoma, WA, United States
16. Department of Chemistry, University of Bath, Bath, United Kingdom
17. Department of Analytical, Environmental and Forensic Sciences, King's College London, London, United Kingdom
18. Environmental Pollution Control Laboratory, Chemistry Department, Aristotle University of Thessaloniki, Thessaloniki, Greece
19. Department of Pharmaceutical Sciences, Toxicological Center, Antwerp, Belgium
20. IBED, University of Amsterdam, Amsterdam, Netherlands
21. Université Paris-Sud, CNRS, AgroParisTech, Université Paris-Saclay, Chatenay-Malabry, France
22. National Institute of Legal Medicine and Forensic Sciences, Lisbon, Portugal
23. NIREAS-International Water Research Center and Department of Civil and Environmental Engineering, University of Cyprus, Nicosia, Cyprus
24. Faculty of Fisheries and Protection of Waters, University of South Bohemia in Ceske Budejovice, Zatisi, Czech Republic
25. Istituto di Ricerche Farmacologiche Mario Negri IRCCS, Milan, Italy

26. Department of Analytical Chemistry, Faculty of Chemistry, Complutense University of Madrid, Madrid, Spain
27. Chair of Urban Water Management, Technische Universität Dresden, Dresden, Germany
28. Forensic Toxicology, National Institute for Health and Welfare (THL), Helsinki, Finland
29. Department of Environmental Sciences, Jožef Stefan Institute, Ljubljana, Slovenia
30. Division for Marine and Environmental Research, Rudjer Boskovic Institute, Zagreb, Croatia
31. Department of Aquatic Sciences and Assessment, Swedish University of Agricultural Sciences (SLU), Uppsala, Sweden
32. Institute of Forensic Research, Krakow, Poland
33. Faculty of Pharmacy, University of Lisbon, Lisbon, Portugal
34. Water, Environmental and Food Chemistry Unit (ENFOCHEM), Department of Environmental Chemistry, Institute of Environmental Assessment and Water Research (IDAEA-CSIC), Barcelona, Spain
35. Department of Pharmacology and Toxicology, University of Iceland, Reykjavík, Iceland
36. Institute of Legal Medicine and Core Facility Metabolomics, Medical University of Innsbruck, Innsbruck, Austria
37. Queensland Alliance for Environmental Health Sciences (QAEHS), The University of Queensland, Woolloongabba, QLD, Australia
38. Institute of Clinical Pharmacology, Faculty of Medicine Carl Gustav Carus, Technische Universität Dresden, Dresden, Germany
39. Department of Chemical Engineering, University of Bath, Bath, United Kingdom
40. Process and Systems Engineering Center (PROSYS), Department of Chemical and Biochemical Engineering, Technical University of Denmark, Kongens Lyngby, Denmark
41. Faculty of Technical Sciences, Department of Environmental Engineering and Occupational Safety, University of Novi Sad, Novi Sad, Serbia
42. Department of Coal Chemistry and Environmental Sciences, AGH University of Science and Technology, Krakow, Poland
43. Department of Chemical Engineering, McGill University, Montreal, QC, Canada
44. Eawag, Urban Water Management, Swiss Federal Institute of Aquatic Science and Technology, Dübendorf, Switzerland

Benzoyllecgonine (Cocaine)

[Population-normalized loads of one week per year]



Dots: weekly mean loads. **Grey bars:** min to max range of monitored week. **Black lines:** visual aid linking data of subsequent years.

Fill color of dots: Values <LOQ (limit of quantification) were replaced with 0.5xLOQ if at least one value of the week was >LOQ; white = no values <LOQ, light grey = 1–3 values <LOQ, dark grey = 4–6 values >LOQ.

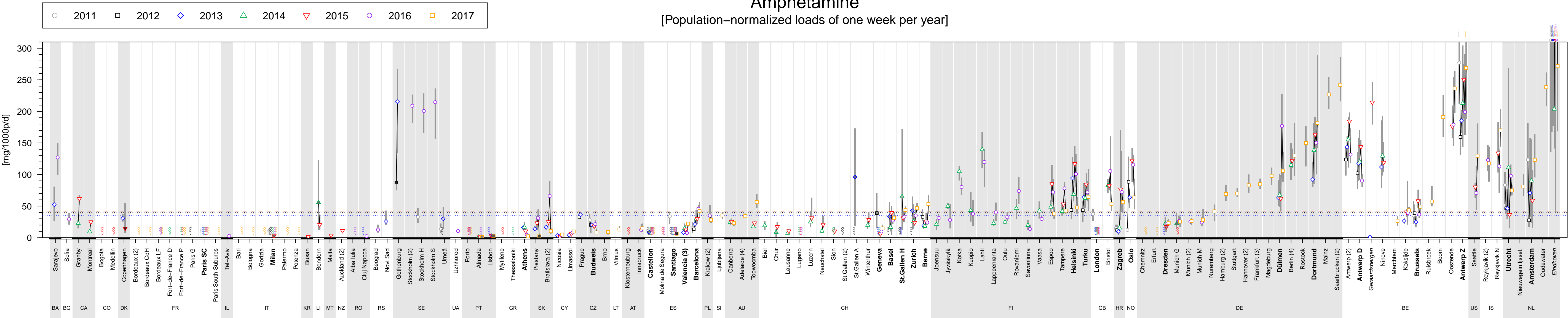
Calculation of population-weighted overall means: cities exhibiting abnormal values for at least one year (italic font, see text for details) and cities reporting '<LOQ' (for all days in one week) were excluded.

Dotted lines: overall mean loads for cities that participated five years or more (cities in bold font). **Dashed lines (right margin):** overall mean loads for all cities that participated in a particular year.

Numbers in brackets: number of wastewater treatment plants monitored in the same city (weekly mean load is the population-weighted average of all wastewater treatment plants monitored in that city).

Amphetamine

[Population-normalized loads of one week per year]



Dots: weekly mean loads. **Grey bars:** min to max range of monitored week. **Black lines:** visual aid linking data of subsequent years.

Fill color of dots: Values <LOQ (limit of quantification) were replaced with 0.5xLOQ if at least one value of the week was >LOQ; white = no values <LOQ, light grey = 1–3 values <LOQ, dark grey = 4–6 values >LOQ.

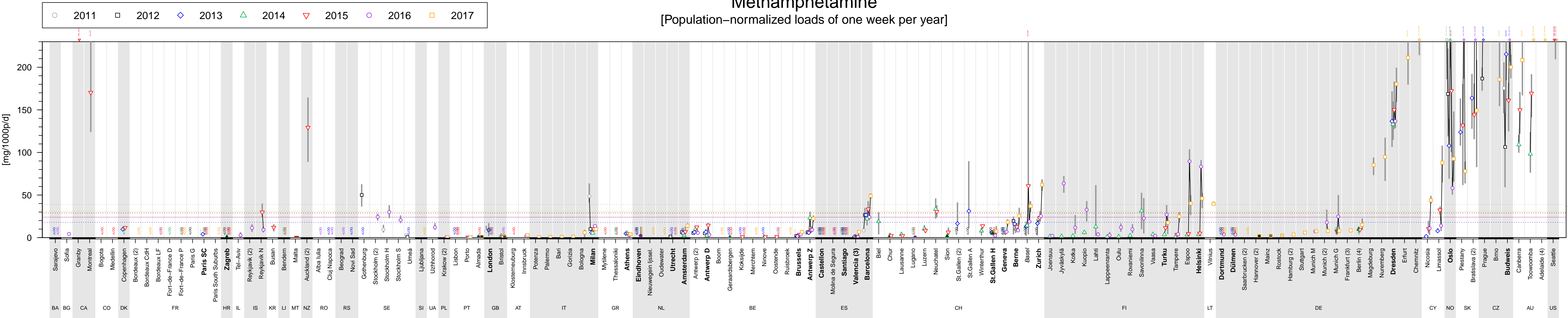
Calculation of population-weighted overall means: cities exhibiting abnormal values for at least one year (italic font, see text for details) and cities reporting '<LOQ' (for all days in one week) were excluded.

Dotted lines: overall mean loads for cities that participated five years or more (cities in bold font). **Dashed lines (right margin):** overall mean loads for all cities that participated in a particular year.

Numbers in brackets: number of wastewater treatment plants monitored in the same city (weekly mean load is the population-weighted average of all wastewater treatment plants monitored in that city).

Methamphetamine

[Population-normalized loads of one week per year]



Dots: weekly mean loads. **Grey bars:** min to max range of monitored week. **Black lines:** visual aid linking data of subsequent years.

Fill color of dots: Values <LOQ (limit of quantification) were replaced with 0.5xLOQ if at least one value of the week was >LOQ; white = no values <LOQ, light grey = 1–3 values <LOQ, dark grey = 4–6 values >LOQ.

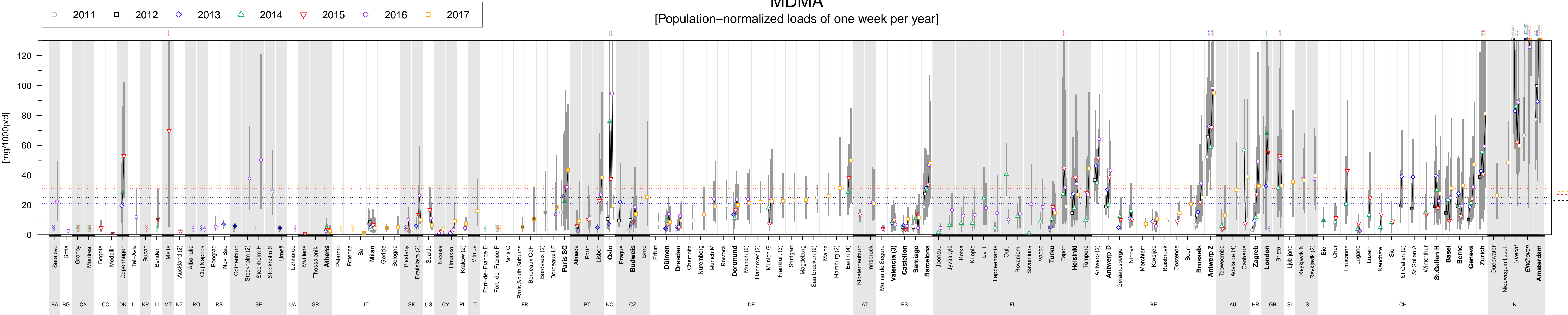
Calculation of population-weighted overall means: cities exhibiting abnormal values for at least one year (italic font, see text for details) and cities reporting '<LOQ' (for all days in one week) were excluded.

Dotted lines: overall mean loads for cities that participated five years or more (cities in bold font). **Dashed lines (right margin):** overall mean loads for all cities that participated in a particular year.

Numbers in brackets: number of wastewater treatment plants monitored in the same city (weekly mean load is the population-weighted average of all wastewater treatment plants monitored in that city).

MDMA

[Population-normalized loads of one week per year]



Dots: weekly mean loads. **Grey bars:** min to max range of monitored week. **Black lines:** visual aid linking data of subsequent years.

Fill color of dots: Values <LOQ (limit of quantification) were replaced with 0.5xLOQ if at least one value of the week was >LOQ; white = no values <LOQ, light grey = 1–3 values <LOQ, dark grey = 4–6 values >LOQ.

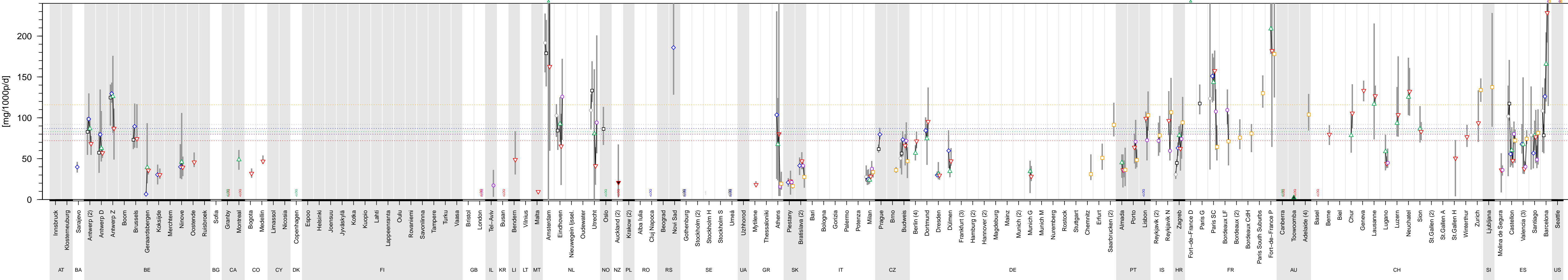
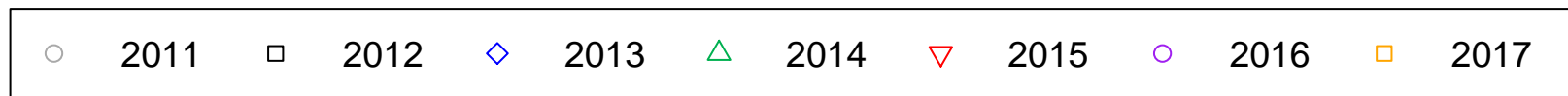
Calculation of population-weighted overall means: cities exhibiting abnormal values for at least one year (italic font, see text for details) and cities reporting '<LOQ' (for all days in one week) were excluded.

Dotted lines: overall mean loads for cities that participated five years or more (cities in bold font). **Dashed lines (right margin):** overall mean loads for all cities that participated in a particular year.

Numbers in brackets: number of wastewater treatment plants monitored in the same city (weekly mean load is the population-weighted average of all wastewater treatment plants monitored in that city).

THC-COOH (Cannabis)

[Population-normalized loads of one week per year]



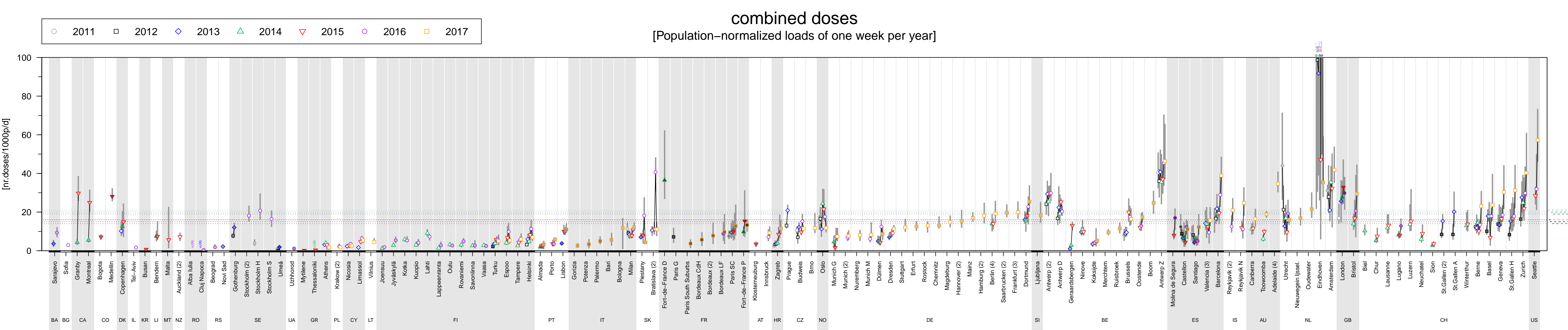
Dots: weekly mean loads. **Grey bars:** min to max range of monitored week. **Black lines:** visual aid linking data of subsequent years.

Fill color of dots: Values <LOQ (limit of quantification) were replaced with 0.5xLOQ if at least one value of the week was >LOQ; white = no values <LOQ, light grey = 1–3 values <LOQ, dark grey = 4–6 values >LOQ.

Calculation of population-weighted overall means: cities exhibiting abnormal values for at least one year (italic font, see text for details) and cities reporting '<LOQ' (for all days in one week) were excluded.

Dotted lines: overall mean loads for cities that participated five years or more (cities in bold font). **Dashed lines (right margin):** overall mean loads for all cities that participated in a particular year.

Numbers in brackets: number of wastewater treatment plants monitored in the same city (weekly mean load is the population-weighted average of all wastewater treatment plants monitored in that city).



Dots: weekly mean loads. **Grey bars:** min to max range of monitored week. **Black lines:** visual aid linking data of subsequent years.

Fill color of dots: Values <LOQ (limit of quantification) were replaced with 0.5xLOQ if at least one value of the week was >LOQ; white = no values <LOQ, light grey = 1–3 values <LOQ, dark grey = 4–6 values >LOQ.

Calculation of population-weighted overall means: cities exhibiting abnormal values for at least one year (italic font, see text for details) and cities reporting '<LOQ' (for all days in one week) were excluded.

Dotted lines: overall mean loads for cities that participated five years or more (cities in bold font). **Dashed lines (right margin):** overall mean loads for all cities that participated in a particular year.

Numbers in brackets: number of wastewater treatment plants monitored in the same city (weekly mean load is the population-weighted average of all wastewater treatment plants monitored in that city).