

Supplementary Figures
The formal demography of kinship II : Multistate models,
parity, and sibship*

Demographic Research, Volume 42, Article 38, Pages 1097 – 1144
Published 19 June 2020

<http://www.demographic-research.org/Volumes/Vol42/38/>

DOI: 10.4054/DemRes.2020.42.38

Hal Caswell
Institute for Biodiversity and Ecosystem Dynamics
PO Box 94240
1090 GE Amsterdam
The Netherlands

h.caswell@uva.nl

June 17, 2020

This supplementary document contains a complete set of kinship outputs for the age×parity model for Slovakia, used as an example in the main text. The different relatives are presented in the same order in each section.

Contents

1	Parity distribution of Focal	1
2	Age structures of kin	2
3	Marginal parity structure of kin over time	12
4	Marginal parity structure of kin by age of Focal	17
5	Marginal parity distributions by age of Focal	22
6	Marginal parity distribution over time	27
7	Prevalence of low parity kin over time	32

*©2020 Hal Caswell. Published under the terms of the Creative Commons Attribution 3.0 License

1 Parity distribution of Focal

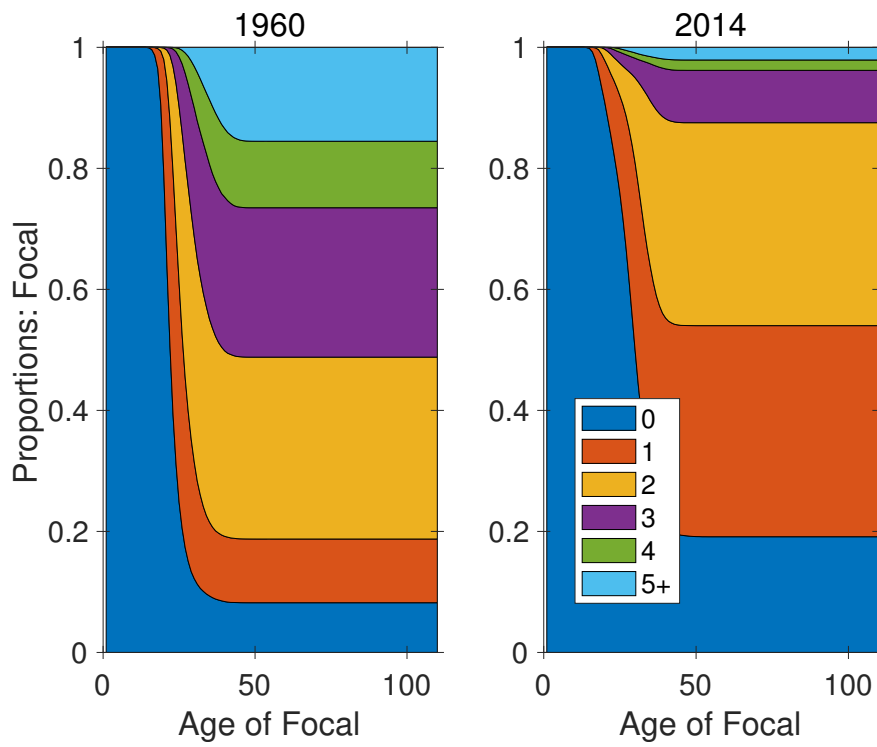
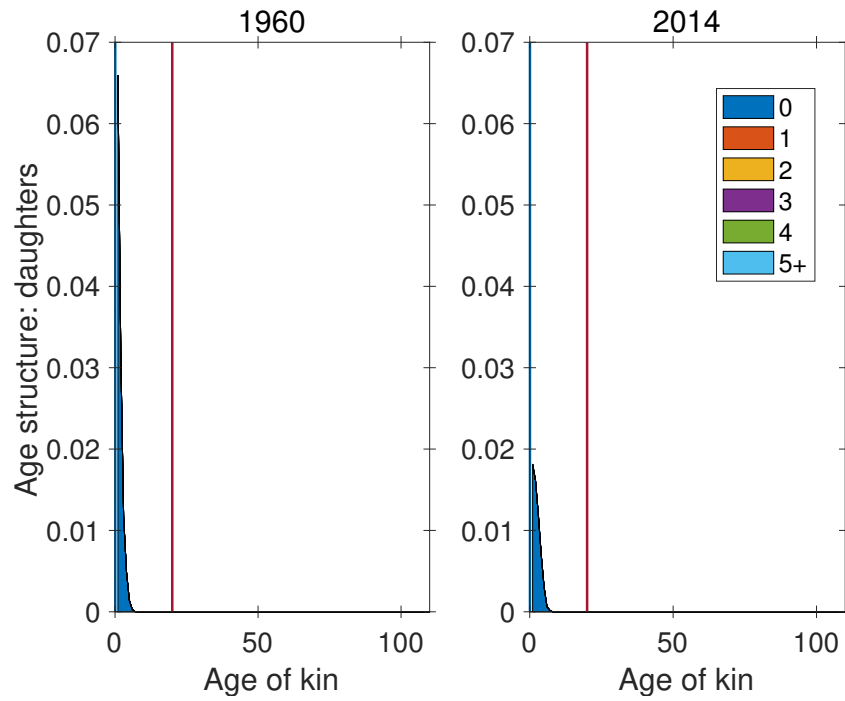
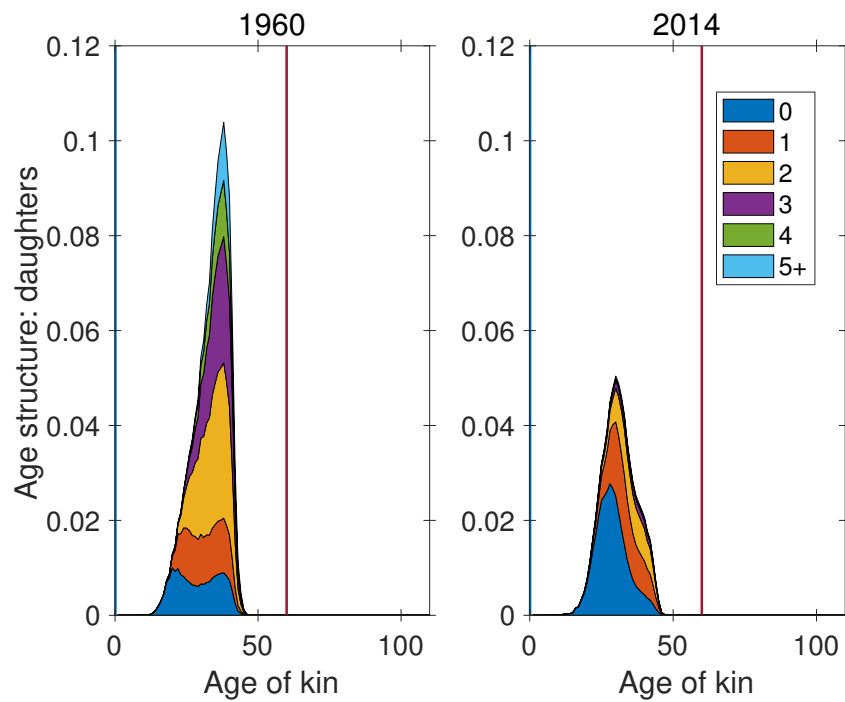


Figure S-1: Expected parity distribution of Focal as a function of age, in 1960 and 2014.

2 Age structures of kin

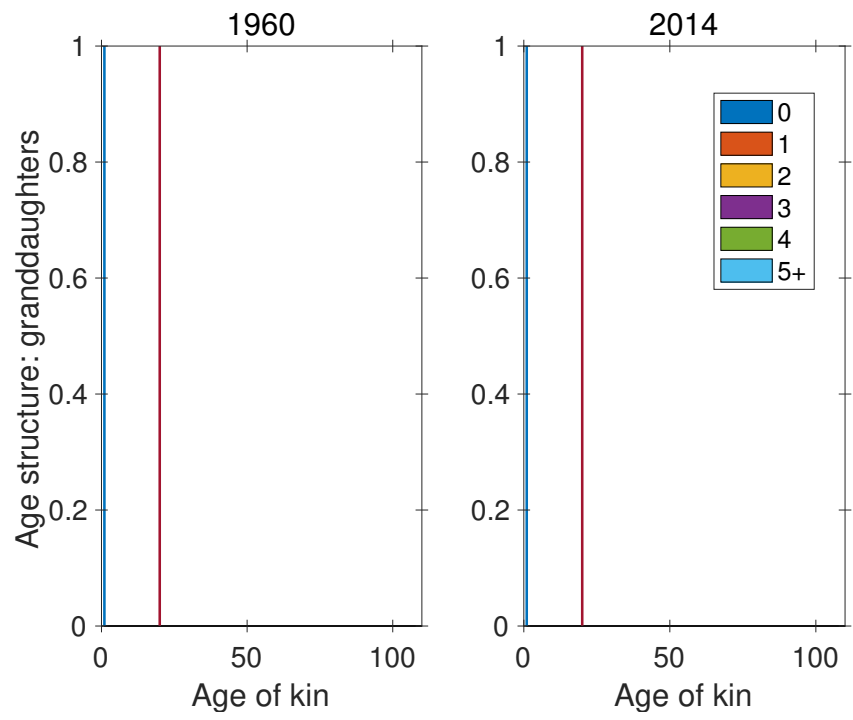


(a) Age 20

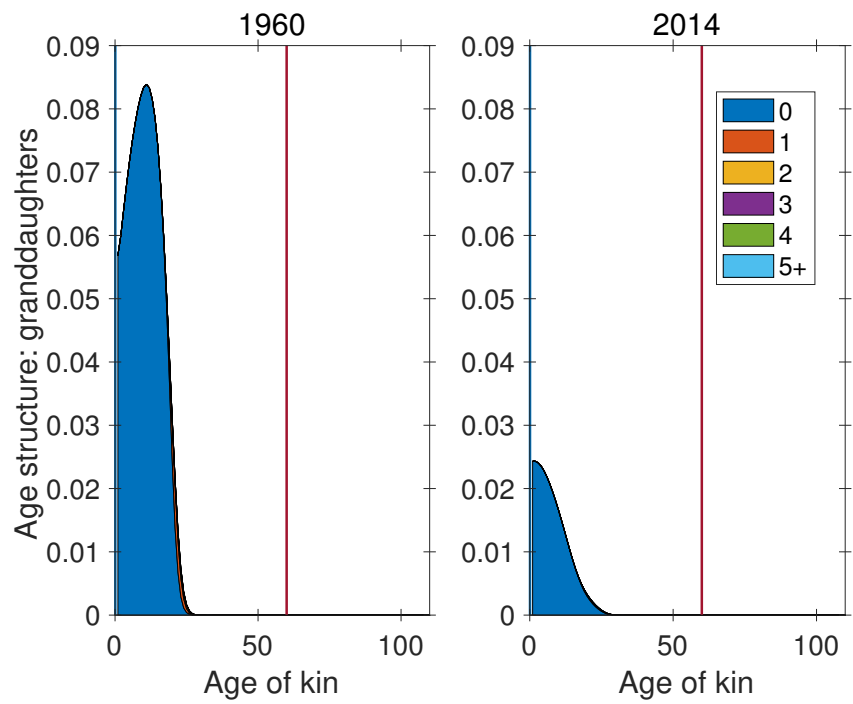


(b) Age 60

Figure S-2: Age \times parity structure of daughters, at ages 20 and 60 of Focal. Vertical line indicates age of Focal for reference.

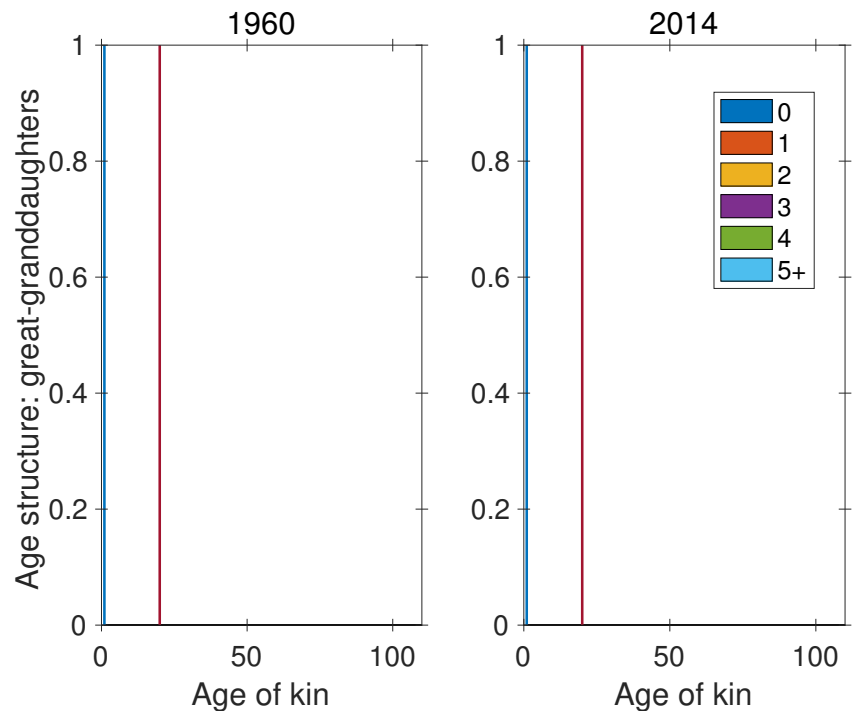


(a) Age 20

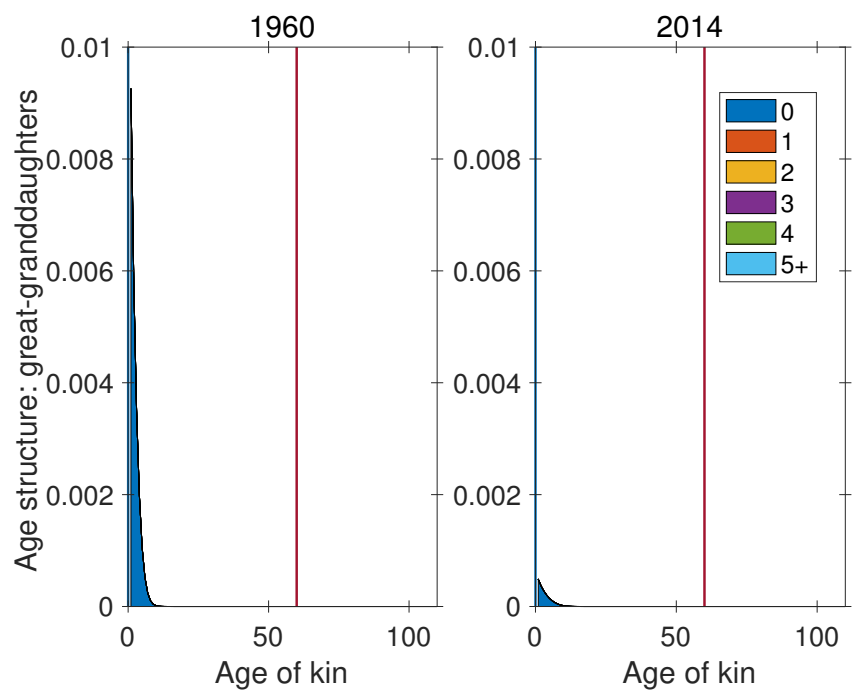


(b) Age 60

Figure S-3: Age \times parity structure of granddaughters, at ages 20 and 60 of Focal. Vertical line indicates age of Focal for reference.

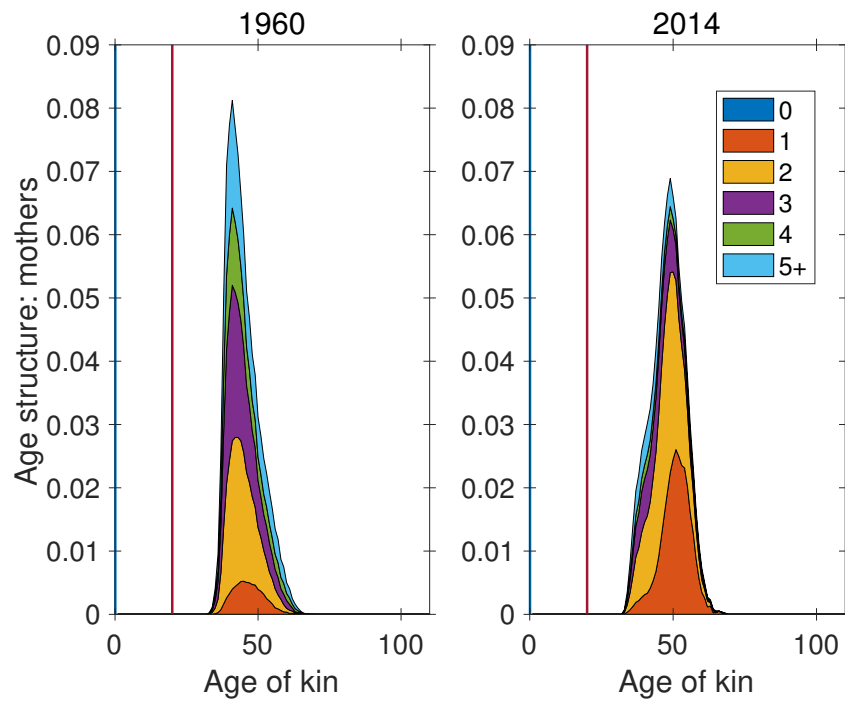


(a) Age 20

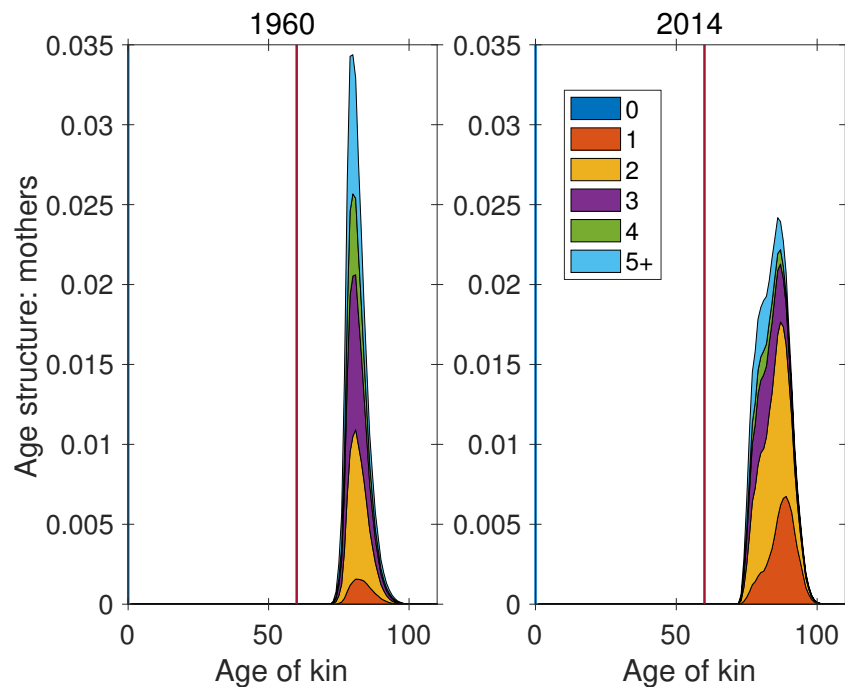


(b) Age 60

Figure S-4: Age \times parity structure of great-granddaughters, at ages 20 and 60 of Focal. Vertical line indicates age of Focal for reference.

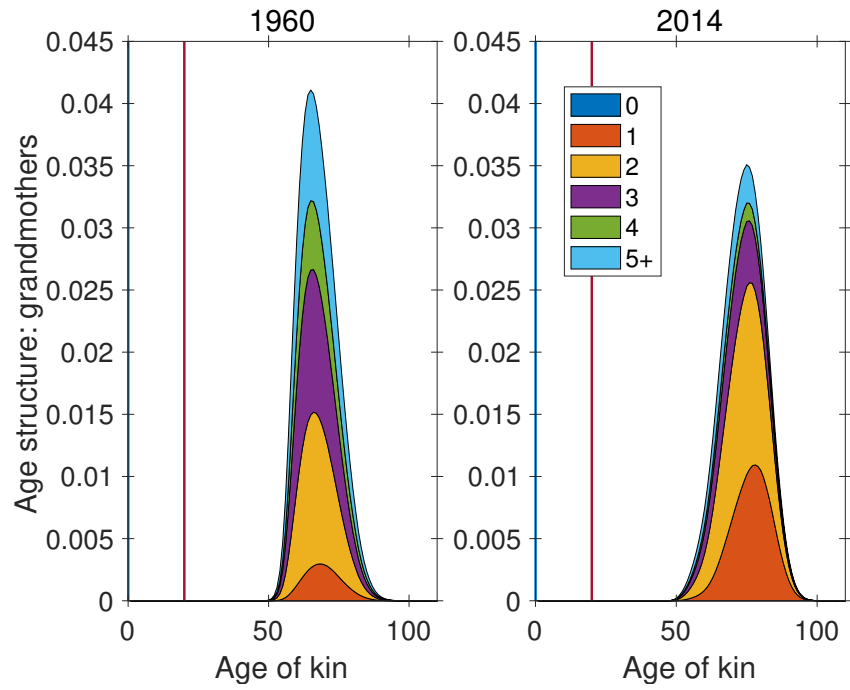


(a) Age 20

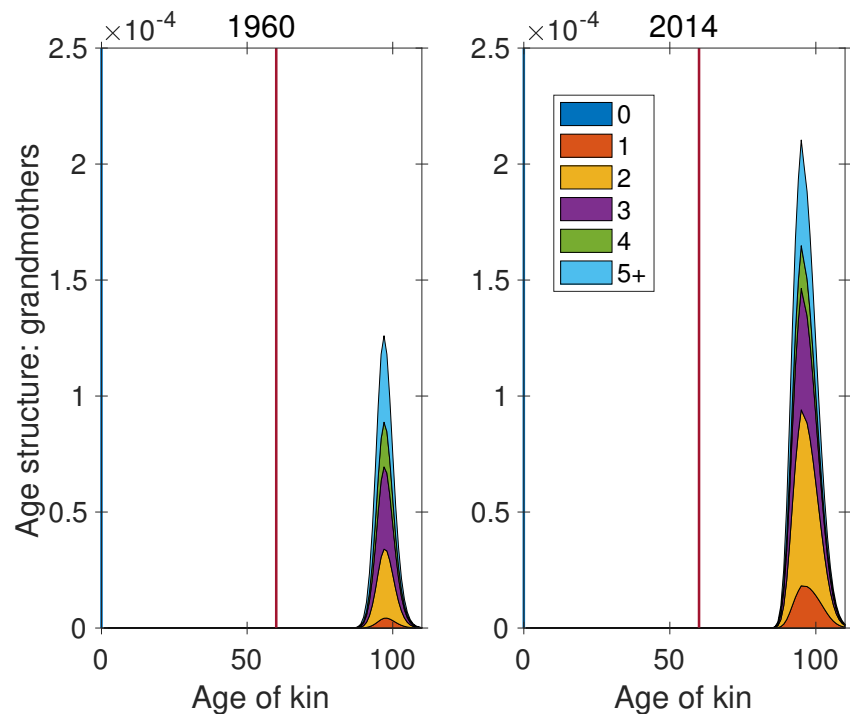


(b) Age 60

Figure S-5: Age×parity structure of mothers, at ages 20 and 60 of Focal. Vertical line indicates age of Focal for reference.

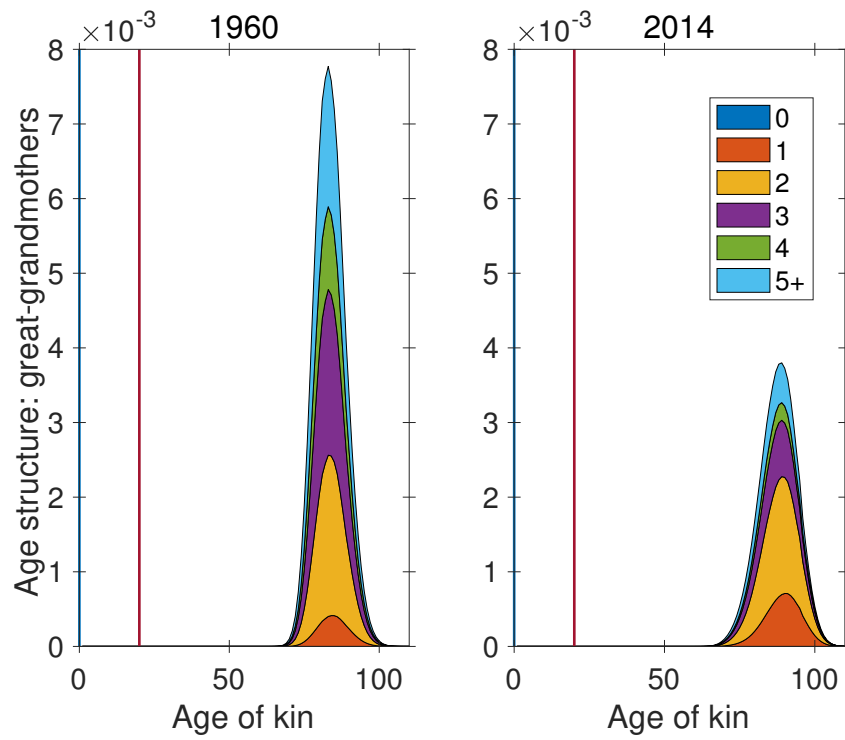


(a) Age 20

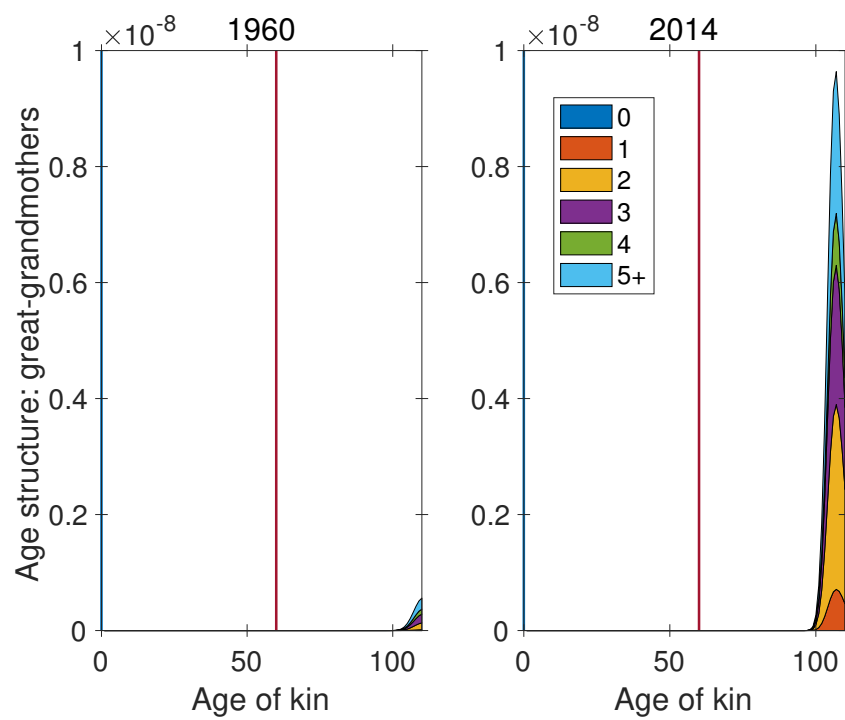


(b) Age 60

Figure S-6: Age×parity structure of grandmothers, at ages 20 and 60 of Focal. Vertical line indicates age of Focal for reference.

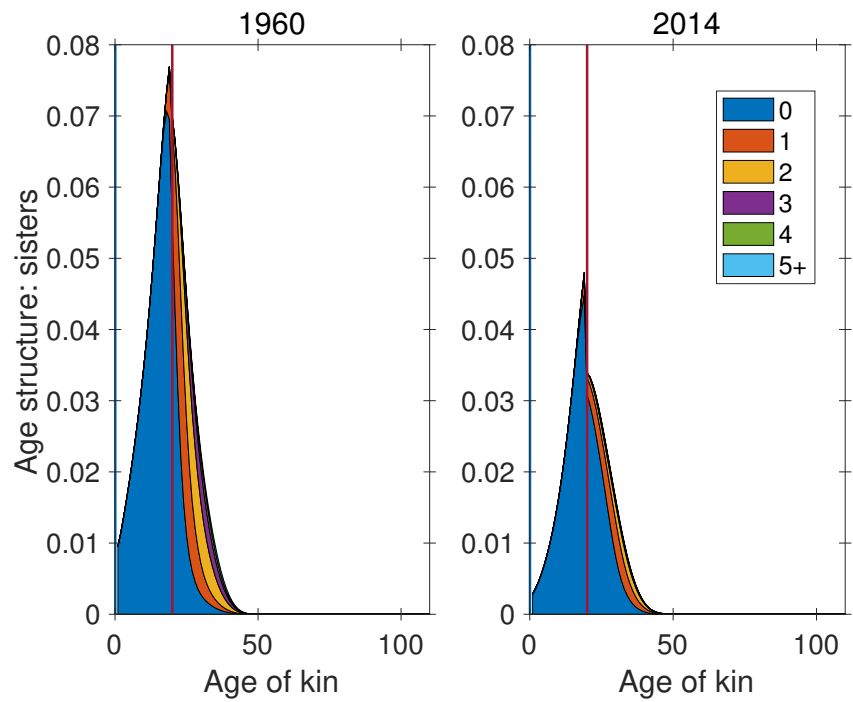


(a) Age 20

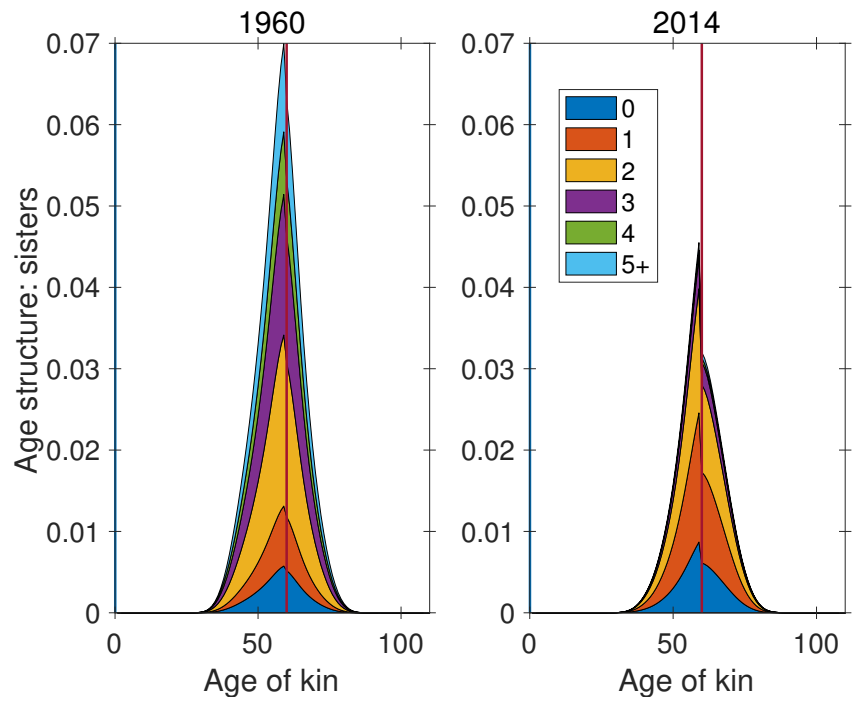


(b) Age 60

Figure S-7: Age \times parity structure of great-grandmothers, at ages 20 and 60 of Focal. Vertical line indicates age of Focal for reference.

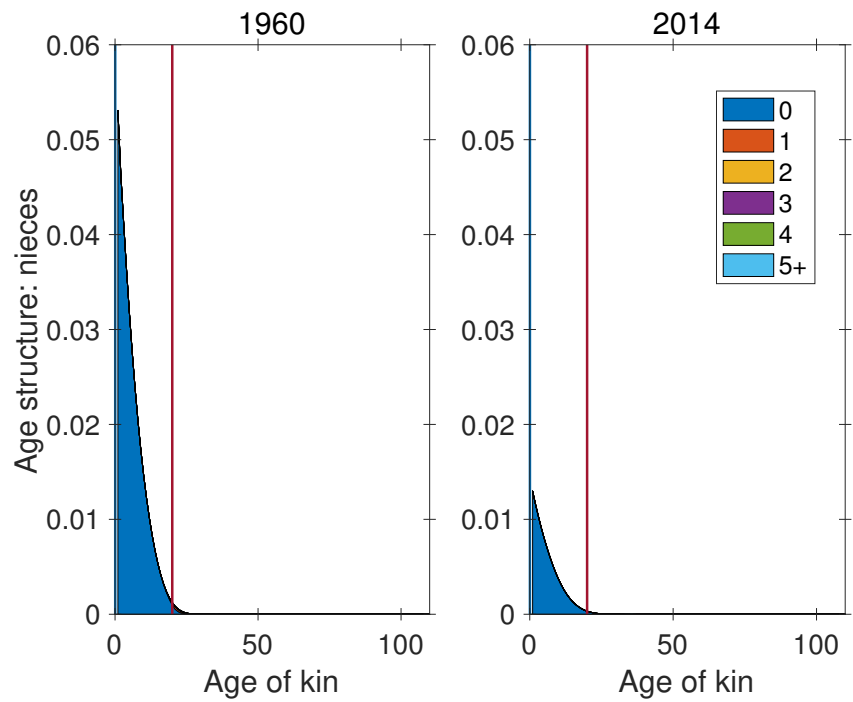


(a) Age 20

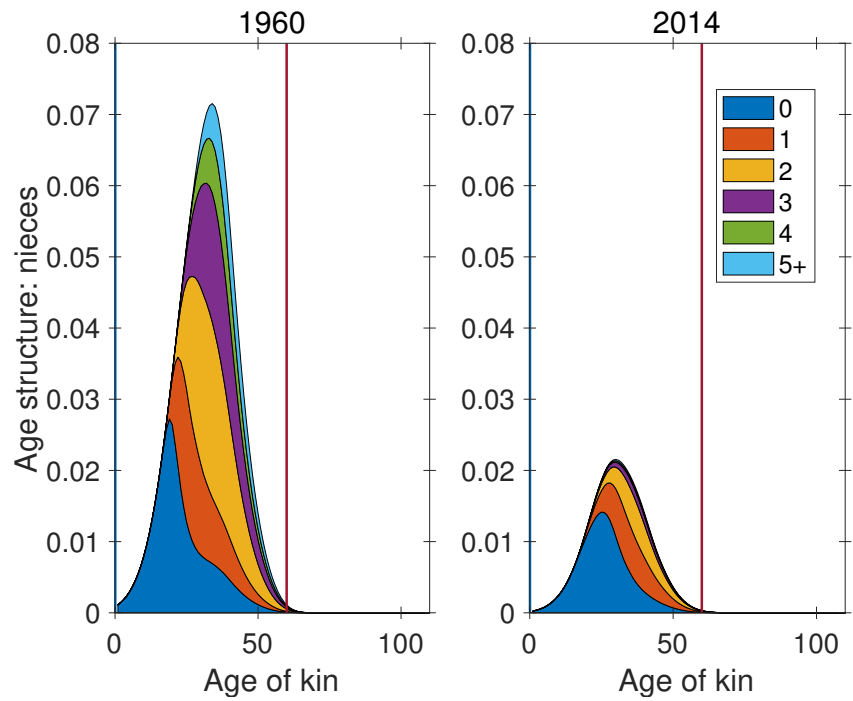


(b) Age 60

Figure S-8: Age \times parity structure of sisters, at ages 20 and 60 of Focal. Vertical line indicates age of Focal for reference.

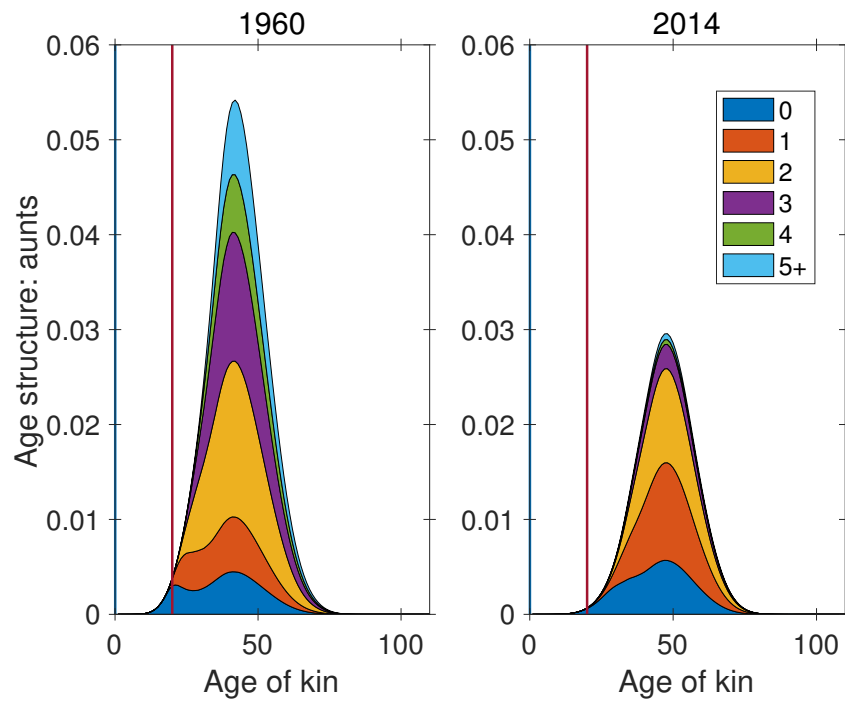


(a) Age 20

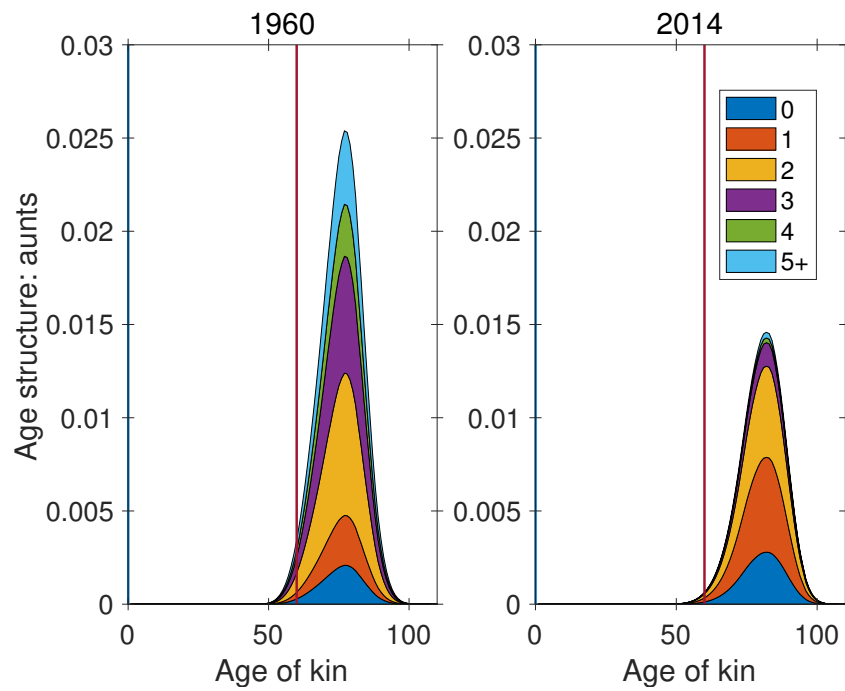


(b) Age 60

Figure S-9: Age \times parity structure of nieces, at ages 20 and 60 of Focal. Vertical line indicates age of Focal for reference.

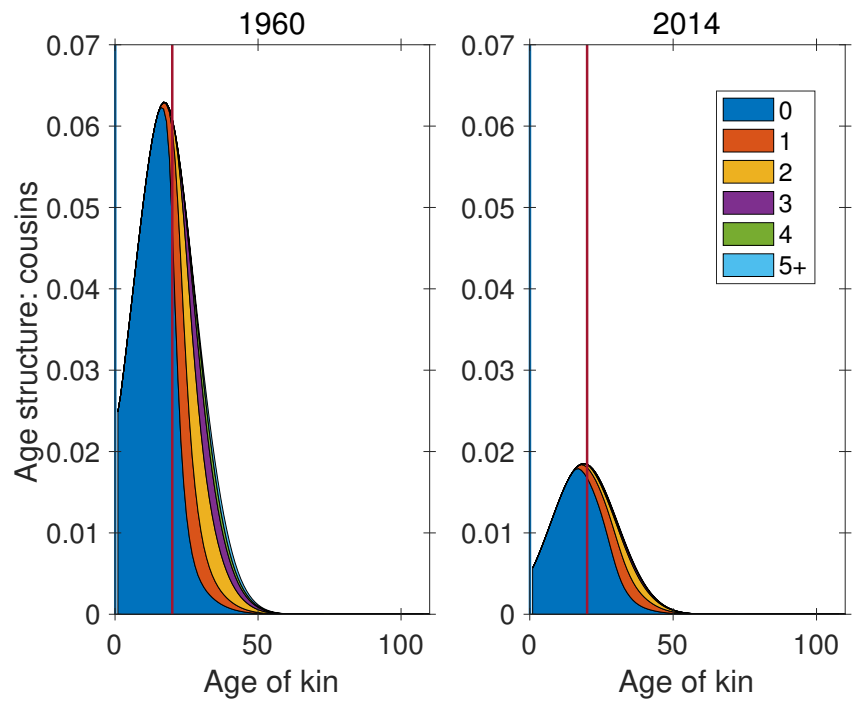


(a) Age 20

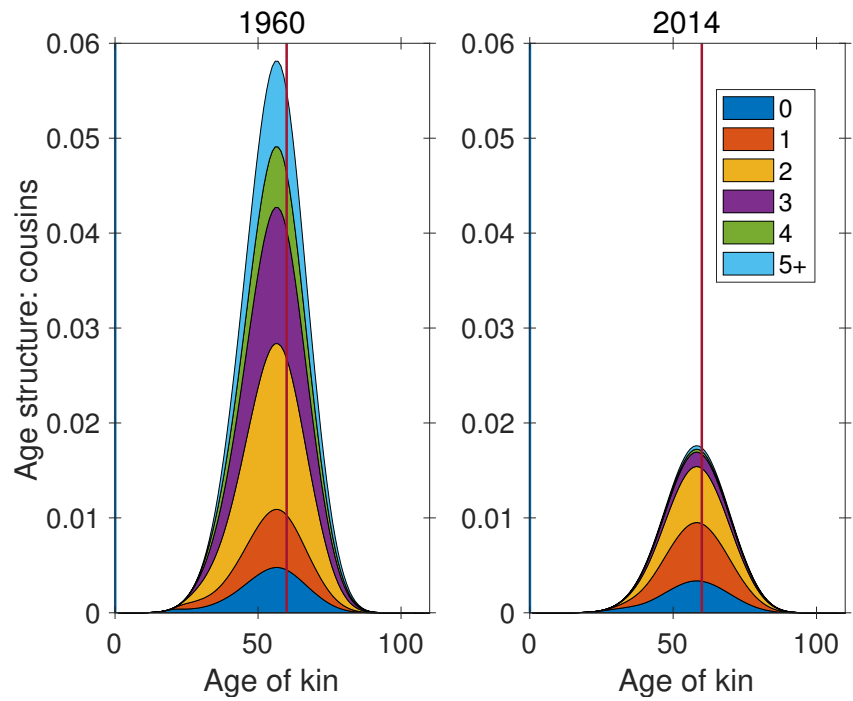


(b) Age 60

Figure S-10: Age \times parity structure of aunts, at ages 20 and 60 of Focal. Vertical line indicates age of Focal for reference.



(a) Age 20



(b) Age 60

Figure S-11: Age \times parity structure of cousins, at ages 20 and 60 of Focal. Vertical line indicates age of Focal for reference.

3 Marginal parity structure of kin over time

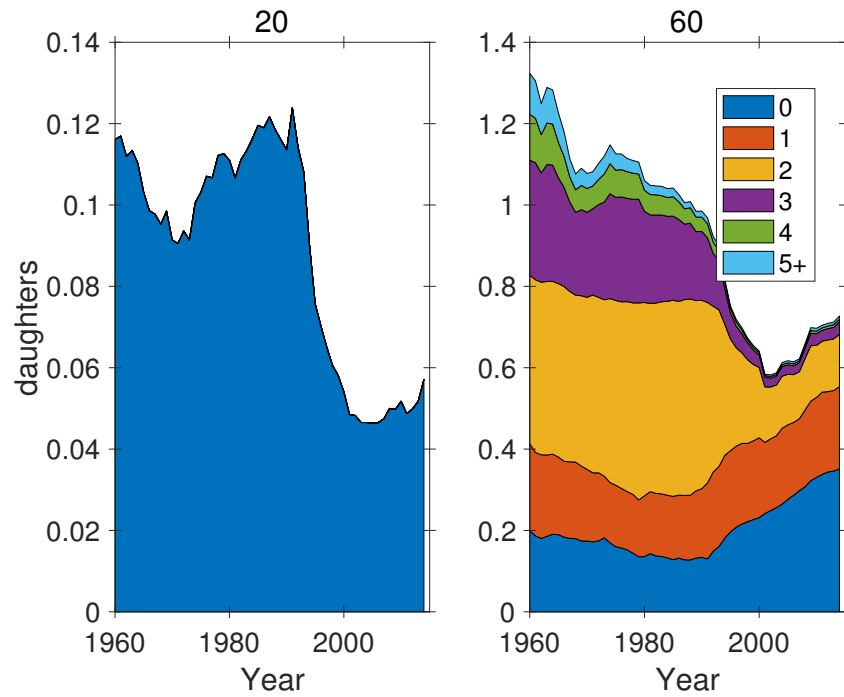


Figure S-12: Marginal parity structure of daughters as a function of time, for ages 20 and 60 of Focal. Note different ordinate scales.

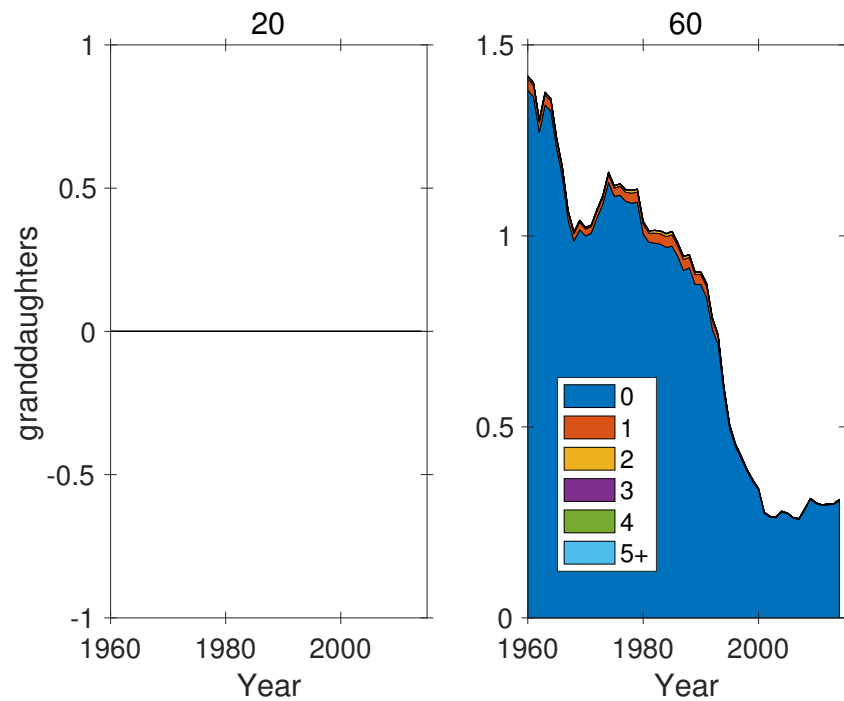


Figure S-13: Marginal parity structure of granddaughters as a function of time, for ages 20 and 60 of Focal. Note different ordinate scales.

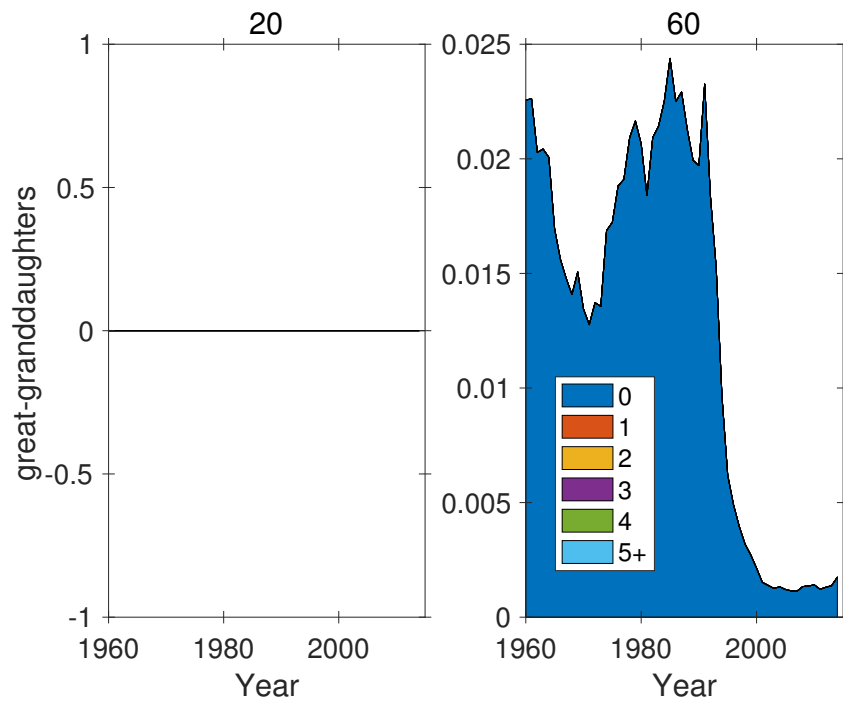


Figure S-14: Marginal parity structure of great-granddaughters as a function of time, for ages 20 and 60 of Focal. Note different ordinate scales.

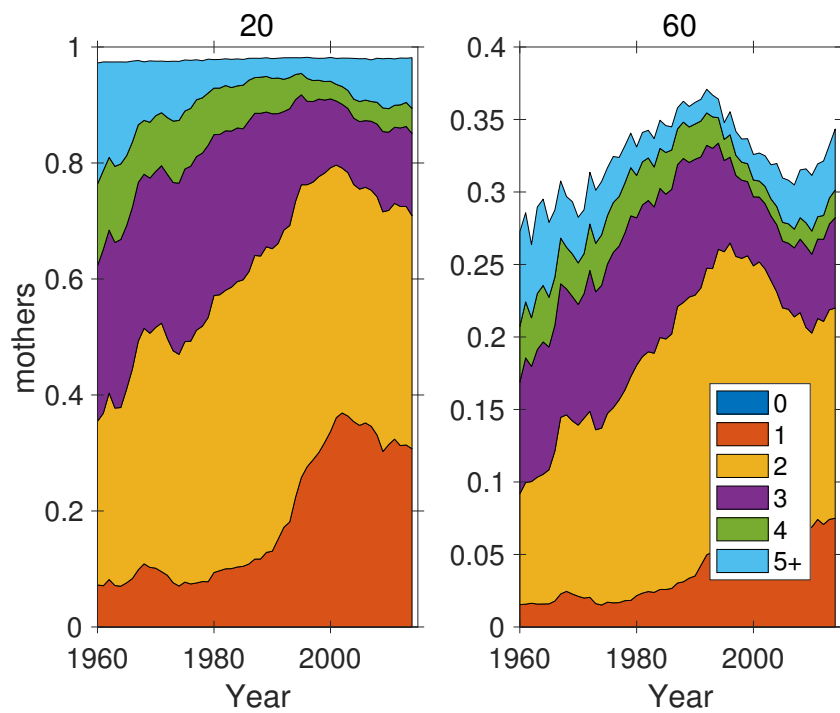


Figure S-15: Marginal parity structure of mothers as a function of time, for ages 20 and 60 of Focal. Note different ordinate scales.

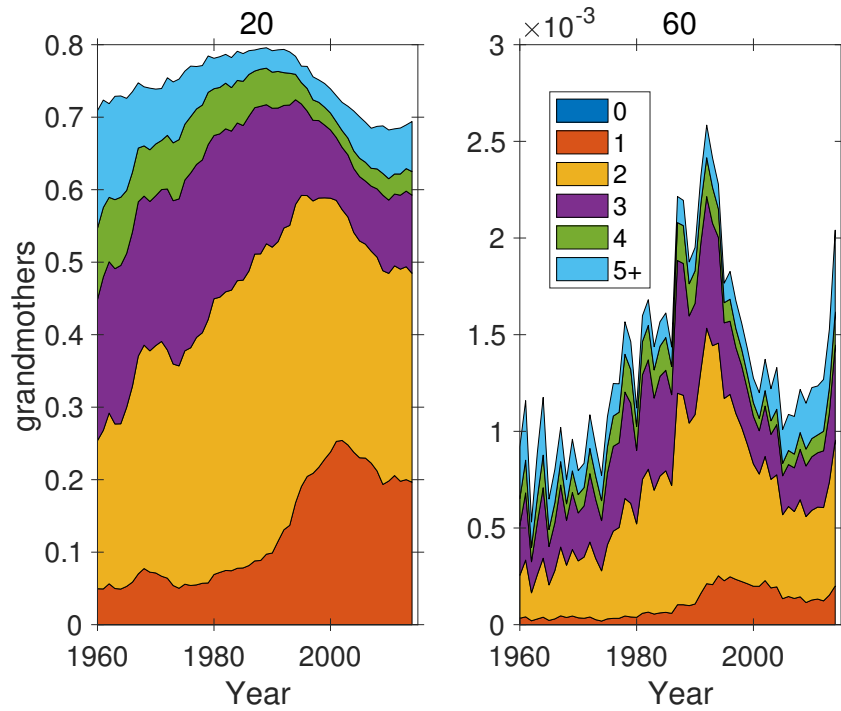


Figure S-16: Marginal parity structure of grandmothers as a function of time, for ages 20 and 60 of Focal. Note different ordinate scales.

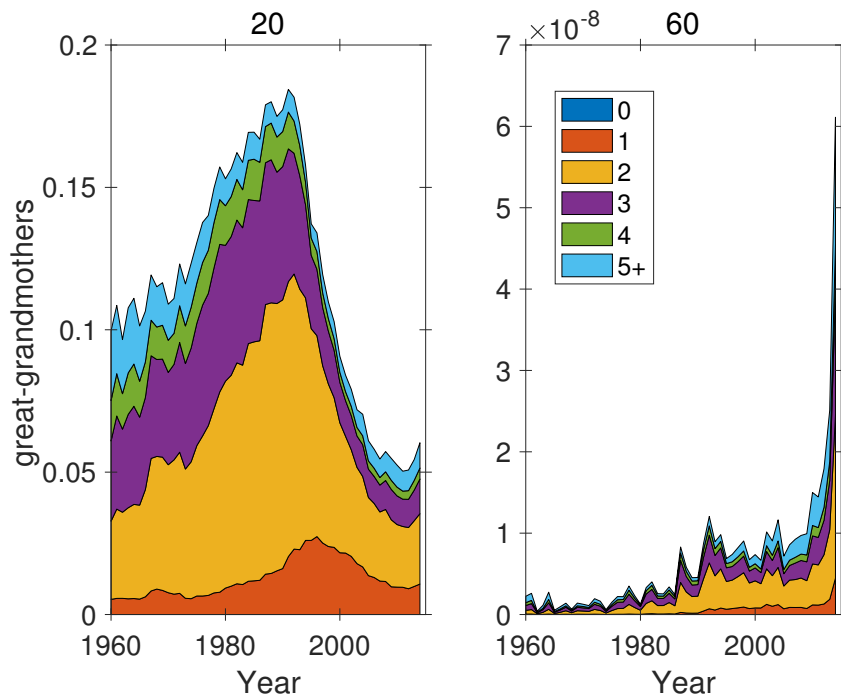


Figure S-17: Marginal parity structure of great-grandmothers as a function of time, for ages 20 and 60 of Focal. Note different ordinate scales.

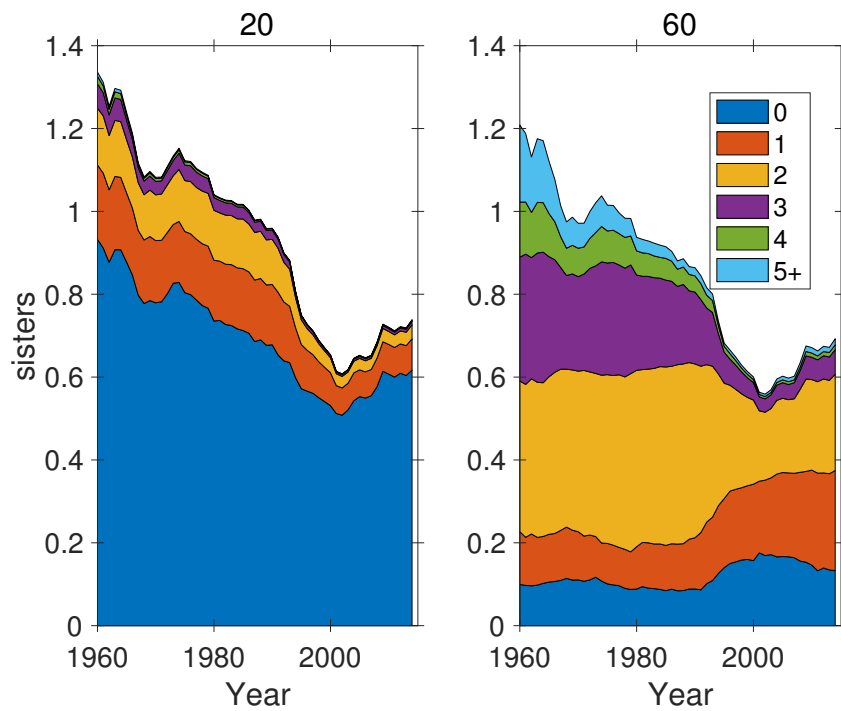


Figure S-18: Marginal parity structure of sisters as a function of time, for ages 20 and 60 of Focal. Note different ordinate scales.

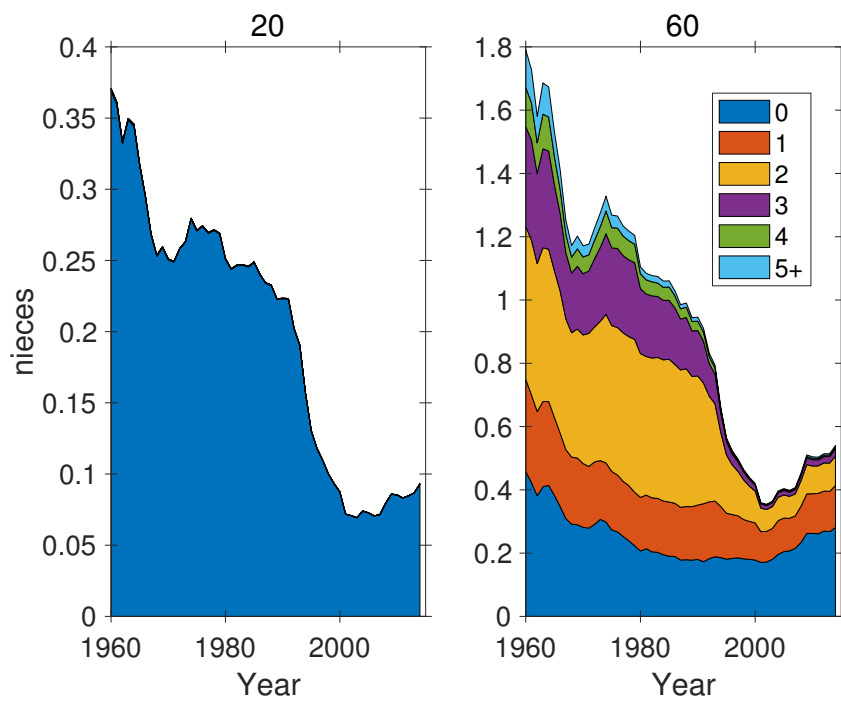


Figure S-19: Marginal parity structure of nieces as a function of time, for ages 20 and 60 of Focal. Note different ordinate scales.

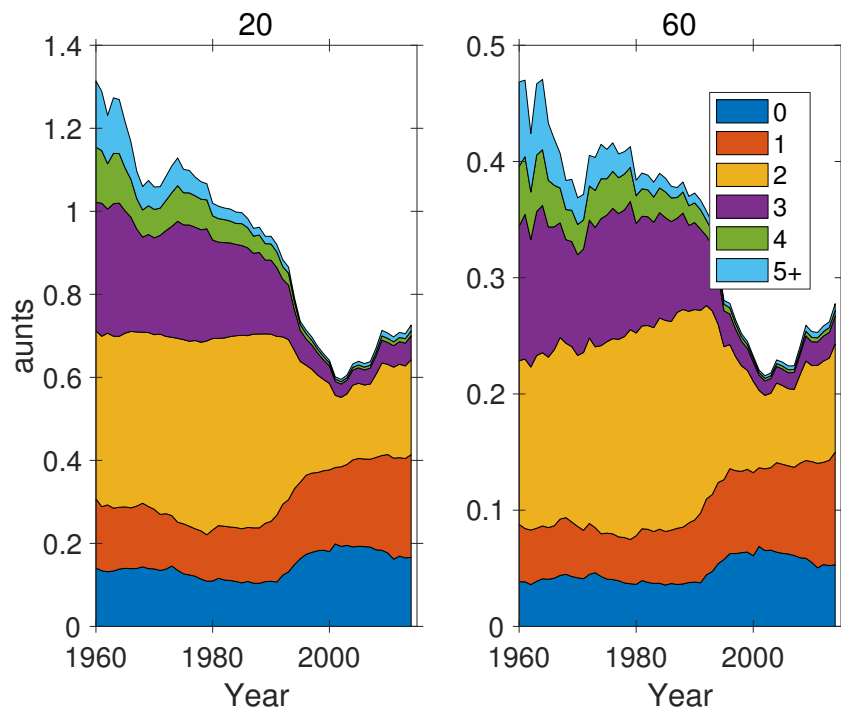


Figure S-20: Marginal parity structure of aunts as a function of time, for ages 20 and 60 of Focal. Note different ordinate scales.

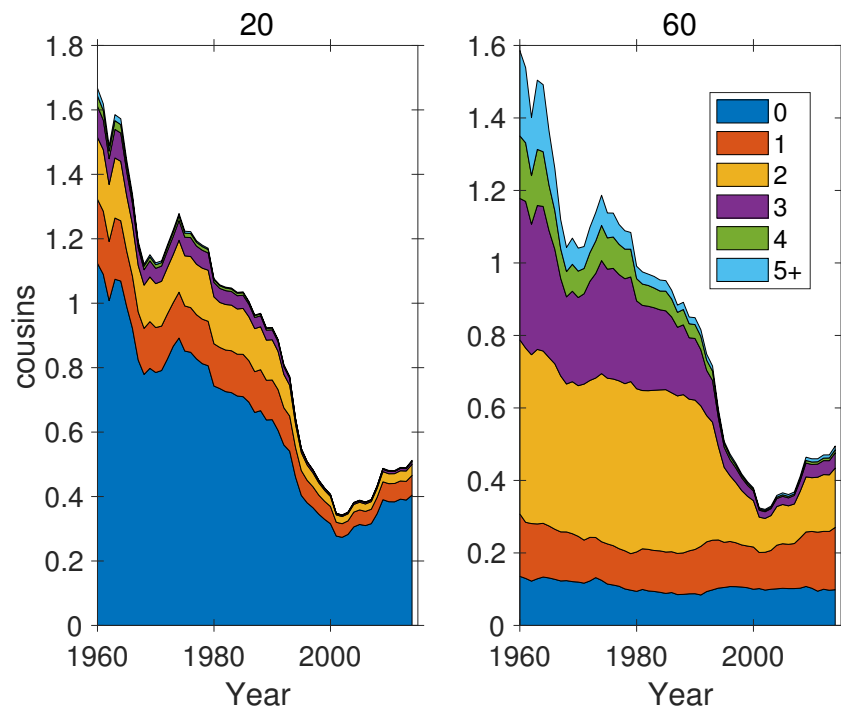


Figure S-21: Marginal parity structure of cousins as a function of time, for ages 20 and 60 of Focal. Note different ordinate scales.

4 Marginal parity structure of kin by age of Focal

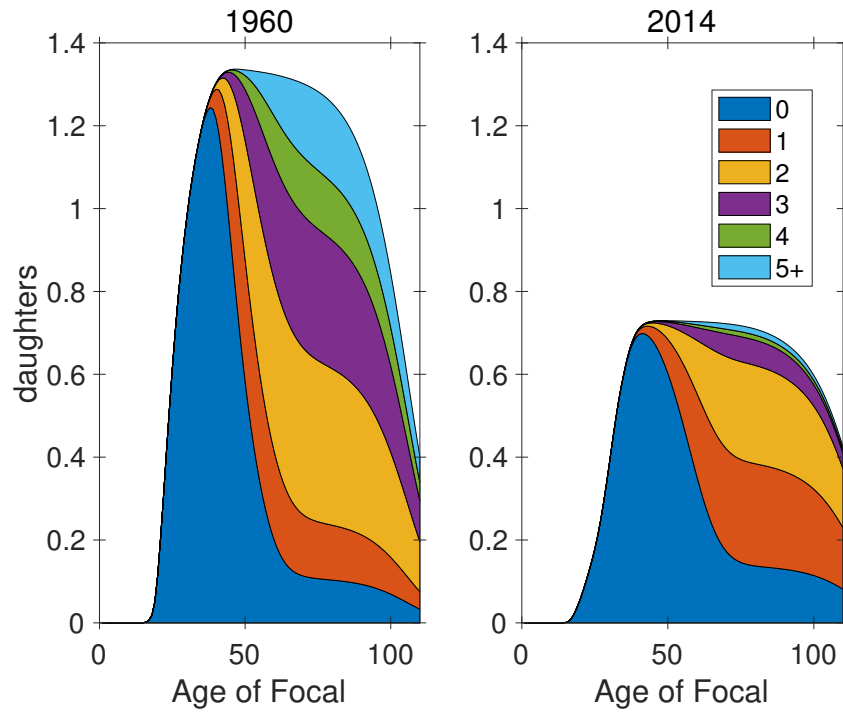


Figure S-22: Marginal parity structure of daughters as a function of the age of Focal.

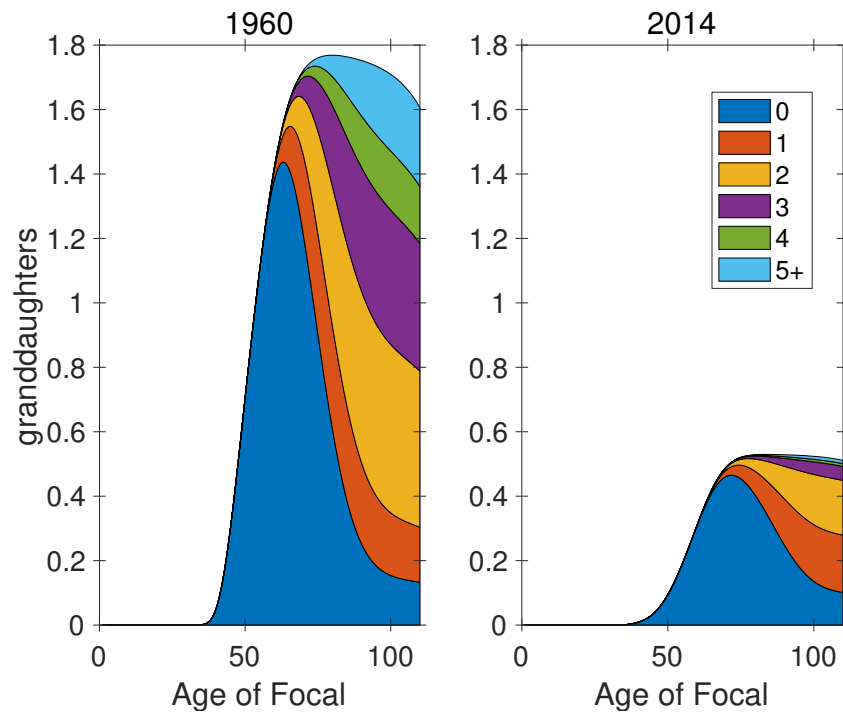


Figure S-23: Marginal parity structure of granddaughters as a function of the age of Focal.

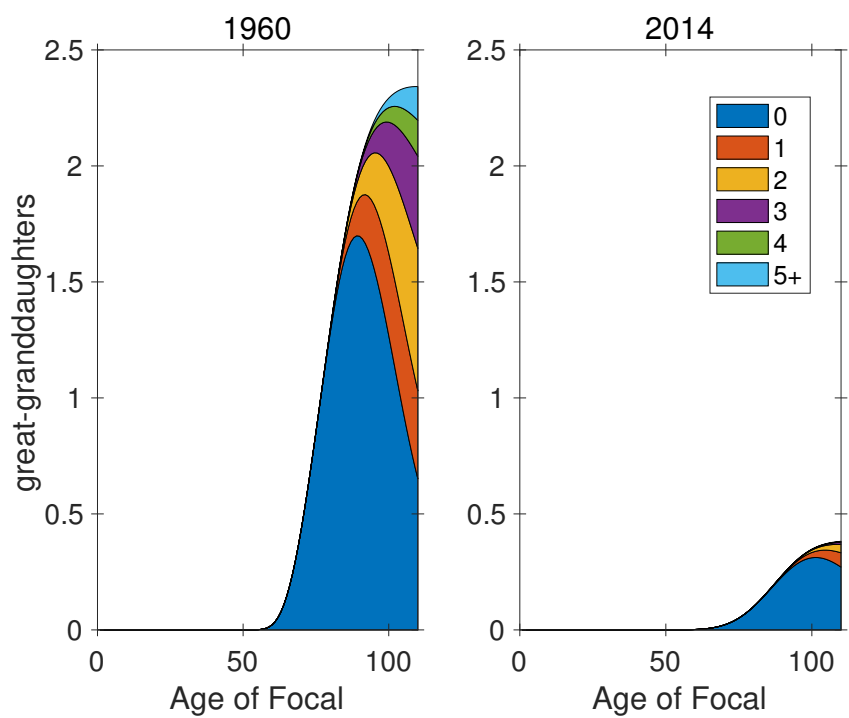


Figure S-24: Marginal parity structure of great-granddaughters as a function of the age of Focal.

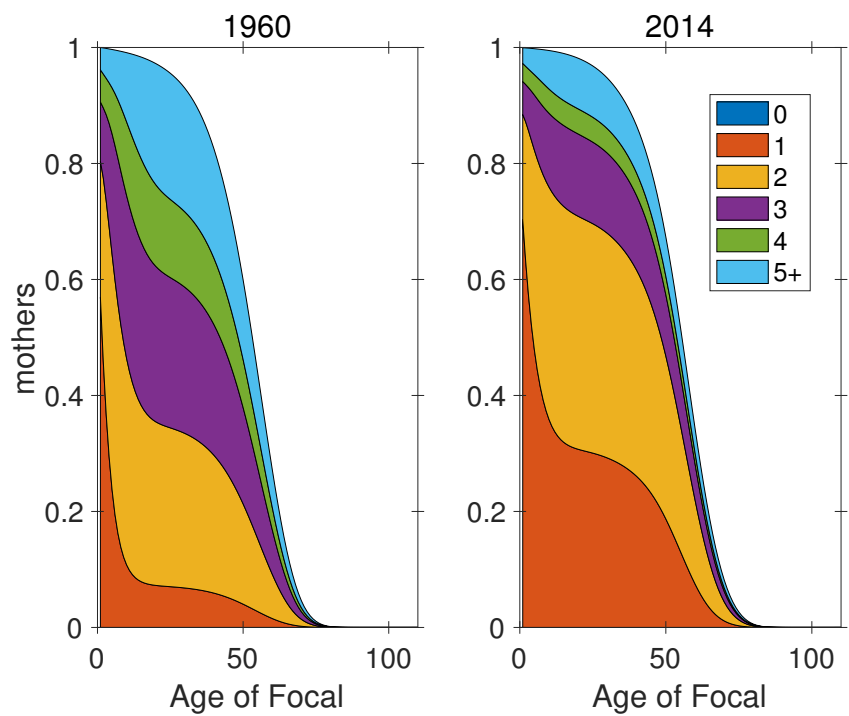


Figure S-25: Marginal parity structure of mothers as a function of the age of Focal.

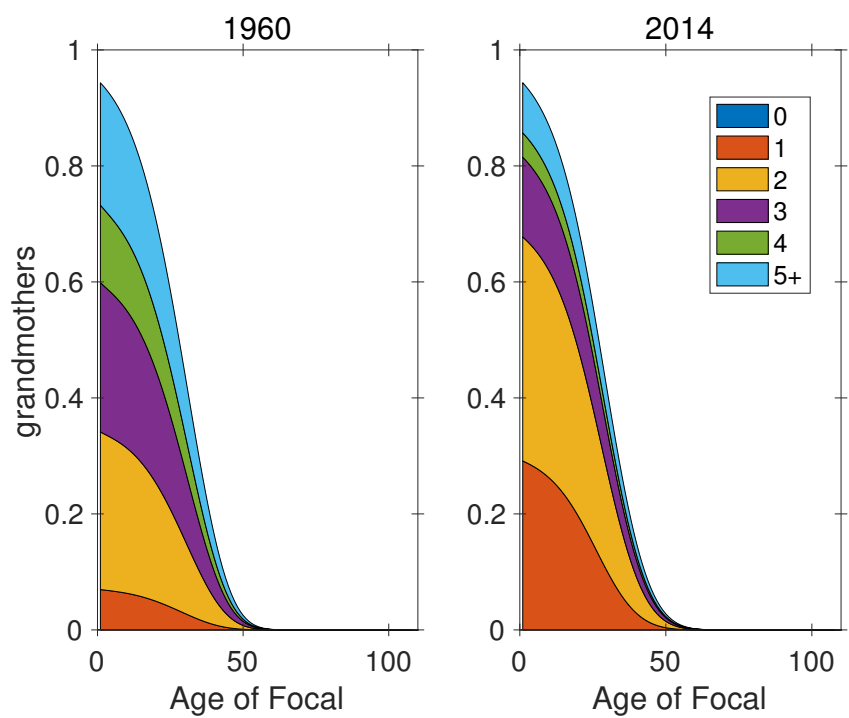


Figure S-26: Marginal parity structure of grandmothers as a function of the age of Focal.

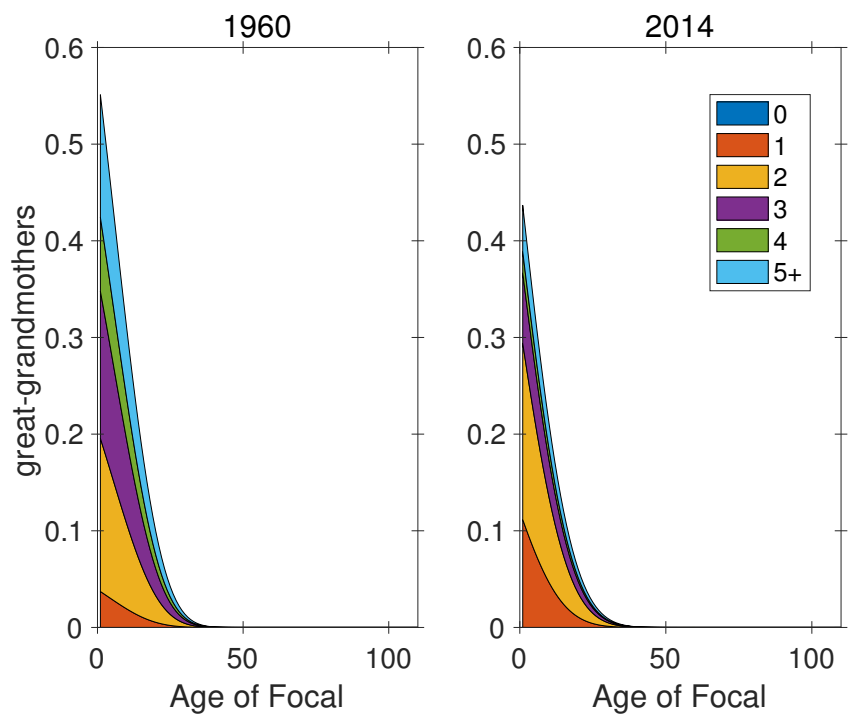


Figure S-27: Marginal parity structure of great-grandmothers as a function of the age of Focal.

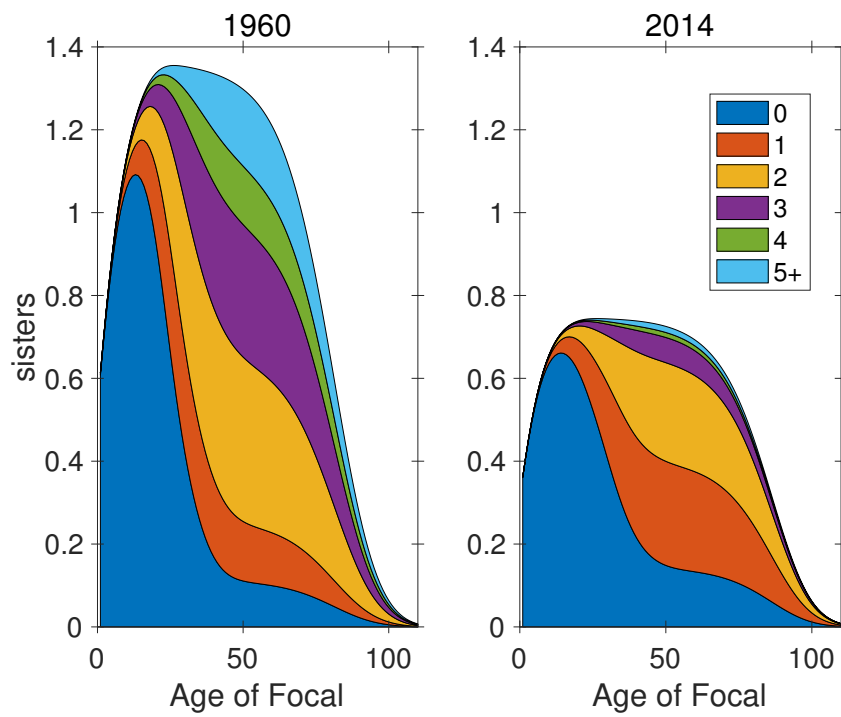


Figure S-28: Marginal parity structure of sisters as a function of the age of Focal

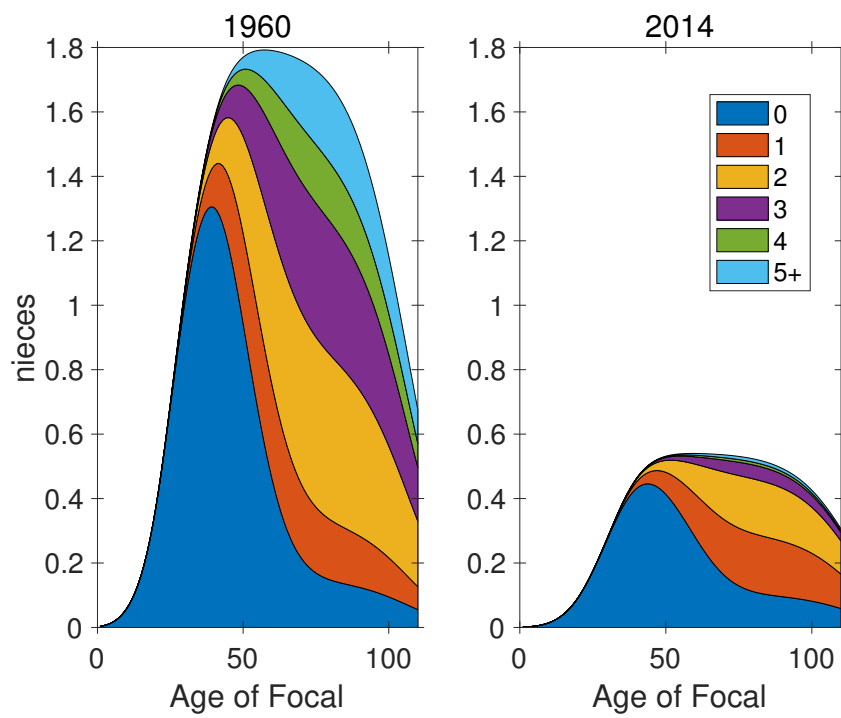


Figure S-29: Marginal parity structure of nieces as a function of the age of Focal.

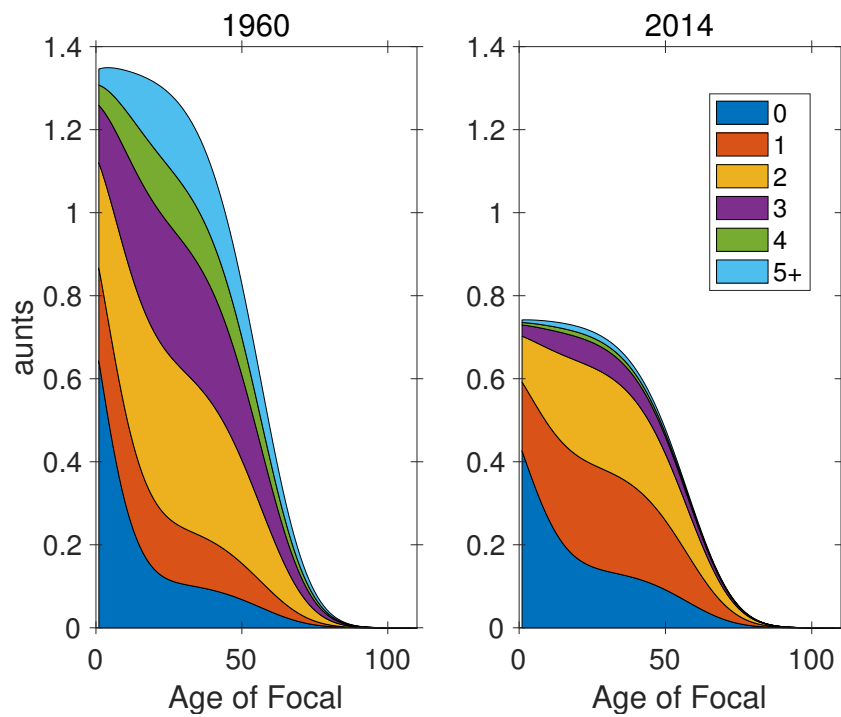


Figure S-30: Marginal parity structure of aunts as a function of the age of Focal.

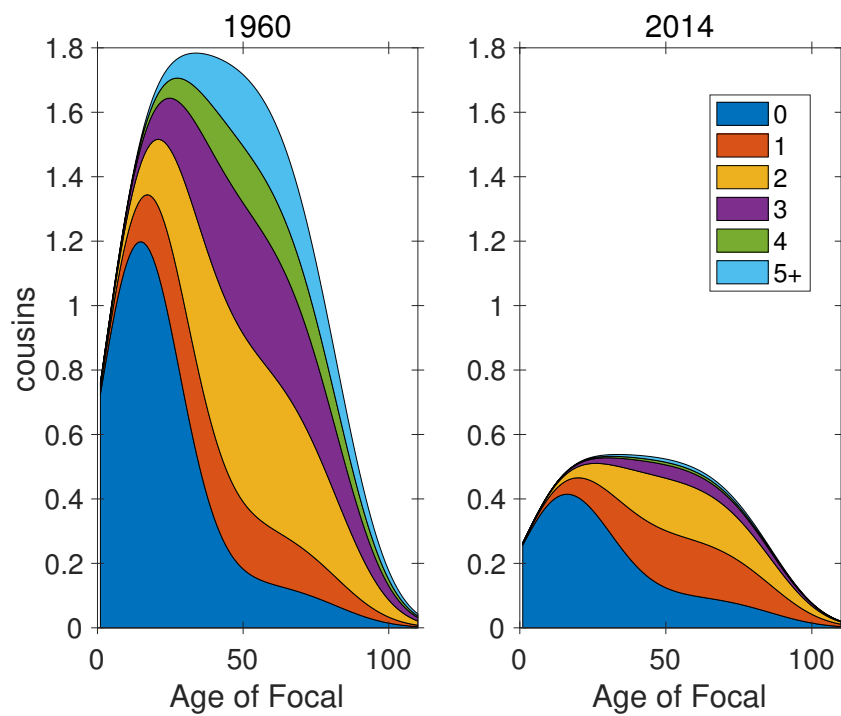


Figure S-31: Marginal parity structure of cousins as a function of the age of Focal.

5 Marginal parity distributions by age of Focal

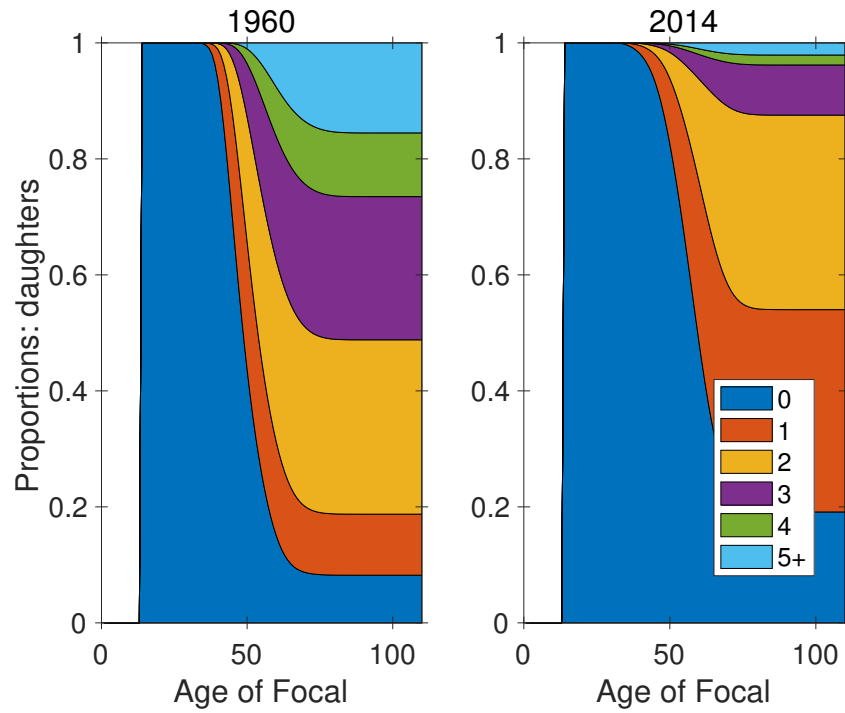


Figure S-32: Marginal parity distribution of daughters, as function of age of Focal

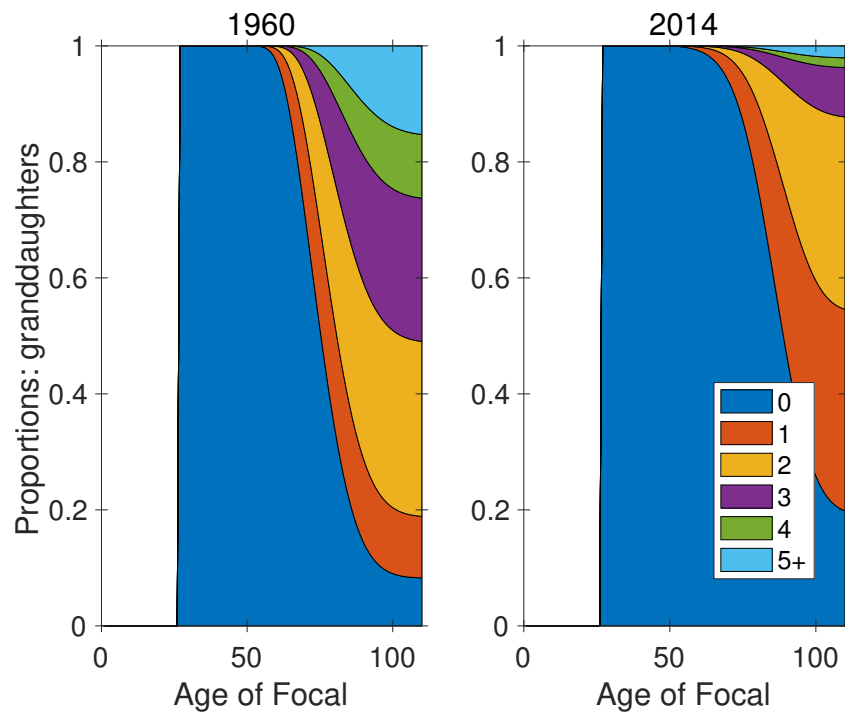


Figure S-33: Marginal parity distribution of granddaughters, as function of age of Focal

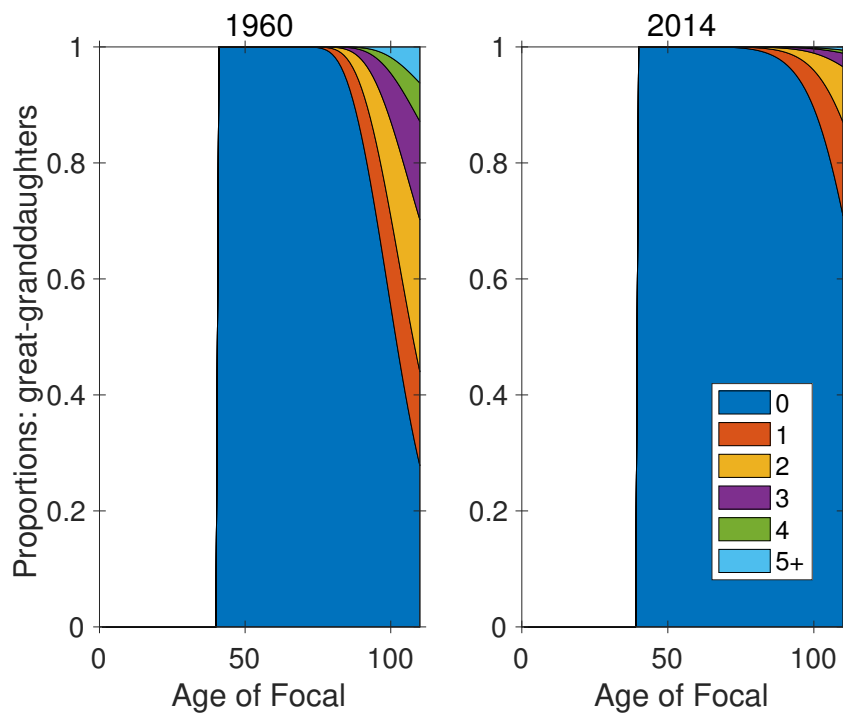


Figure S-34: Marginal parity distribution of great-granddaughters, as function of age of Focal

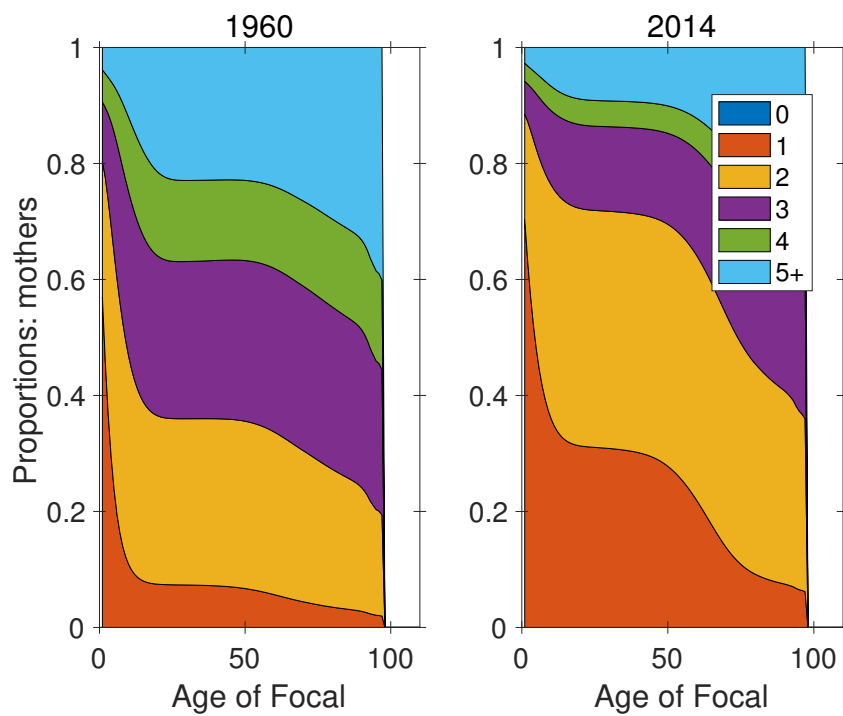


Figure S-35: Marginal parity distribution of mothers, as function of age of Focal

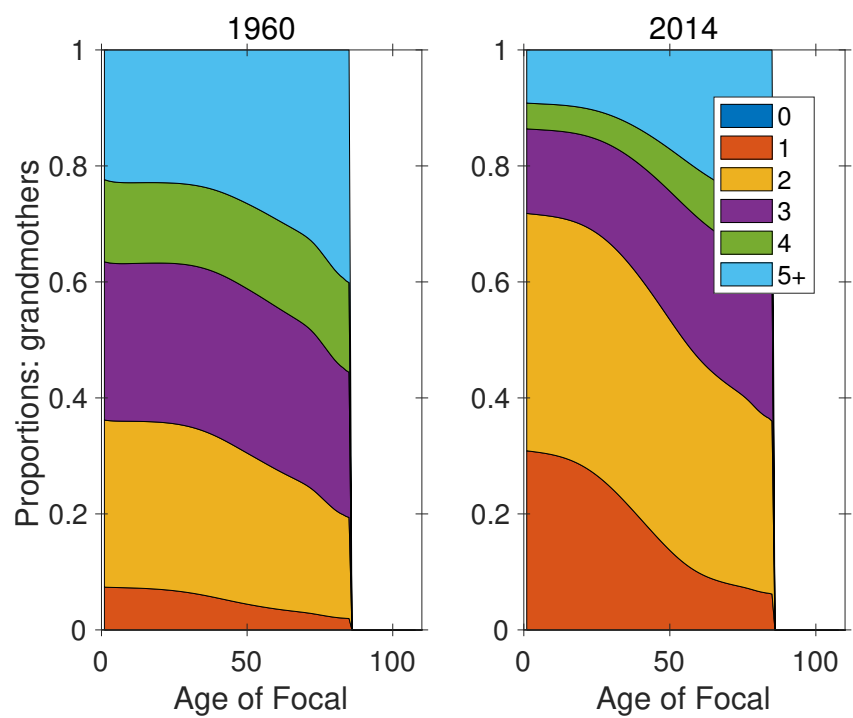


Figure S-36: Marginal parity distribution of grandmothers, as function of age of Focal

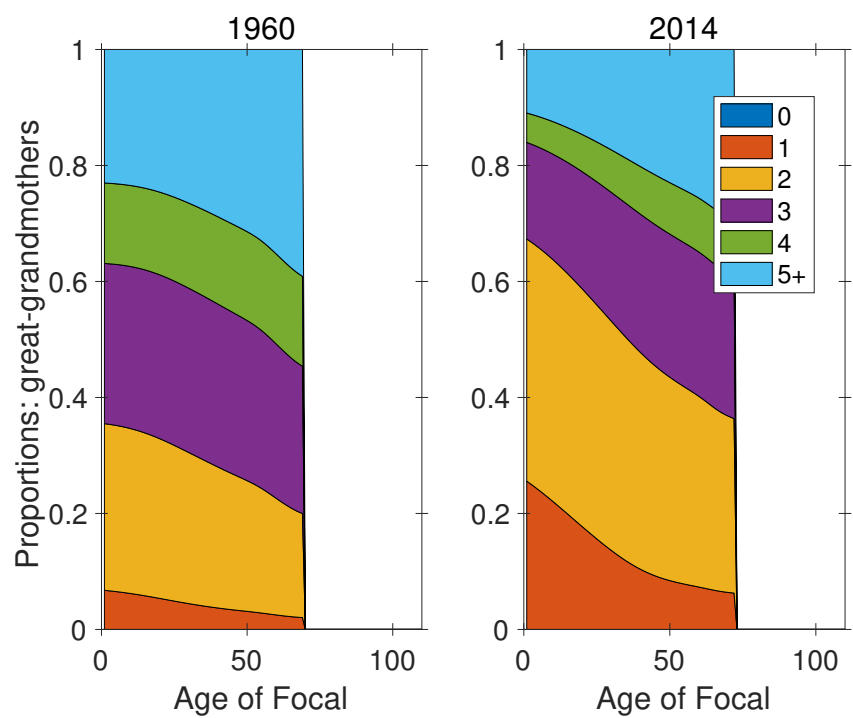


Figure S-37: Marginal parity distribution of great-grandmothers, as function of age of Focal

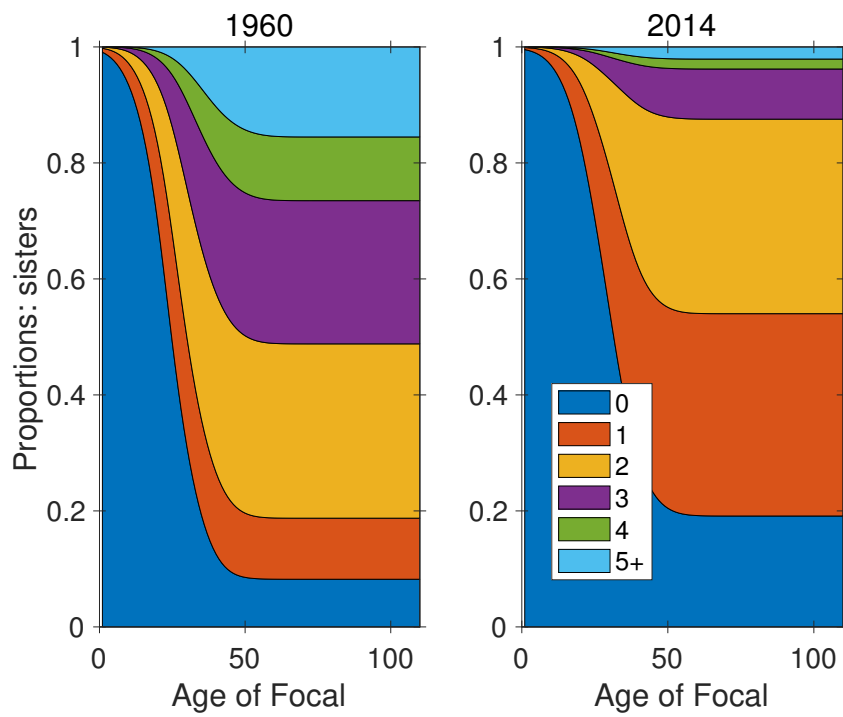


Figure S-38: Marginal parity distribution of sisters, as function of age of Focal

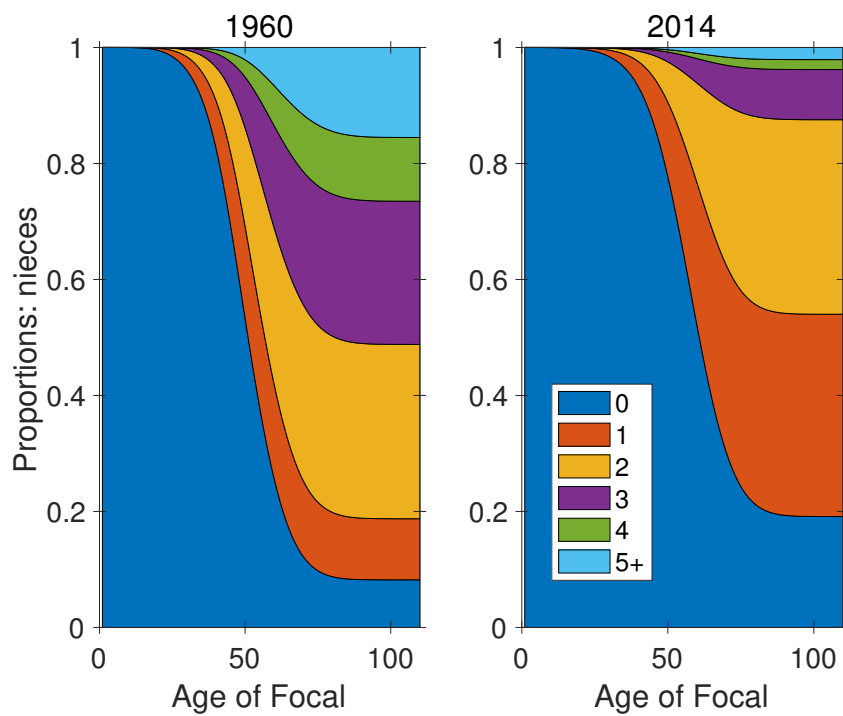


Figure S-39: Marginal parity distribution of nieces, as function of age of Focal

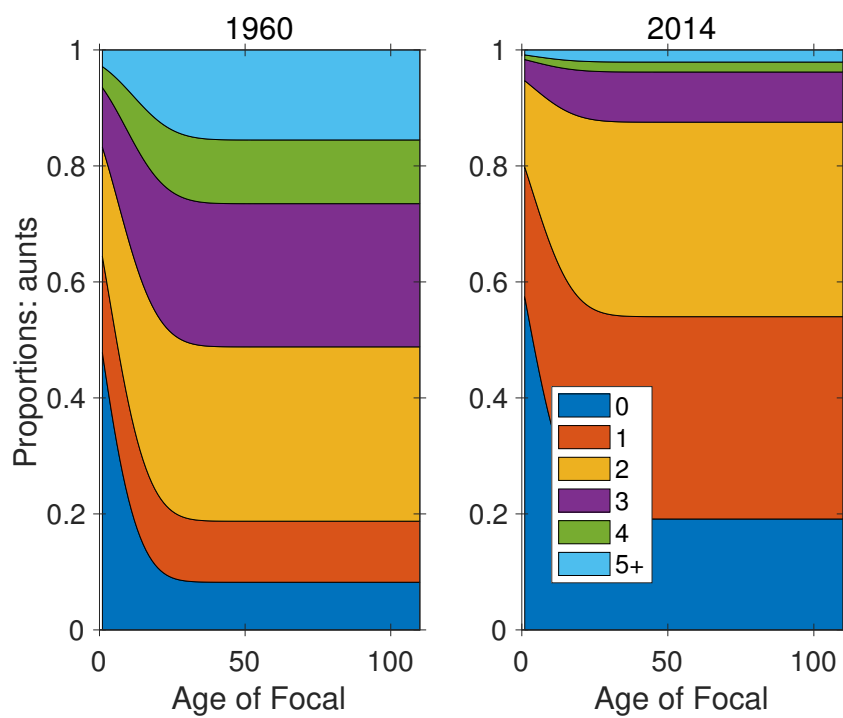


Figure S-40: Marginal parity distribution of aunts, as function of age of Focal

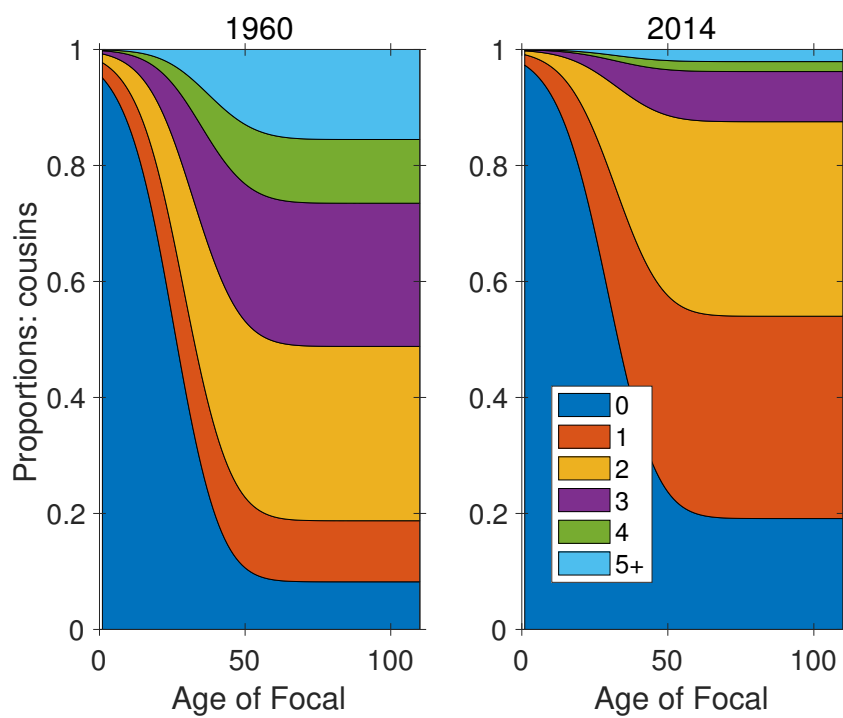


Figure S-41: Marginal parity distribution of cousins, as function of age of Focal

6 Marginal parity distribution over time

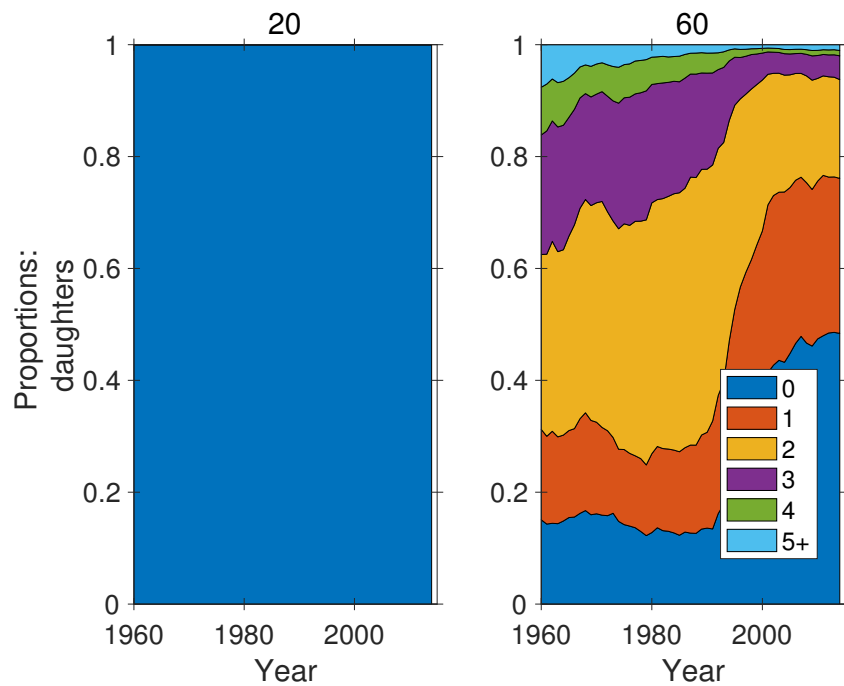


Figure S-42: Marginal parity distribution of daughters of Focal, as function of time, at ages 20 and 60 of Focal.

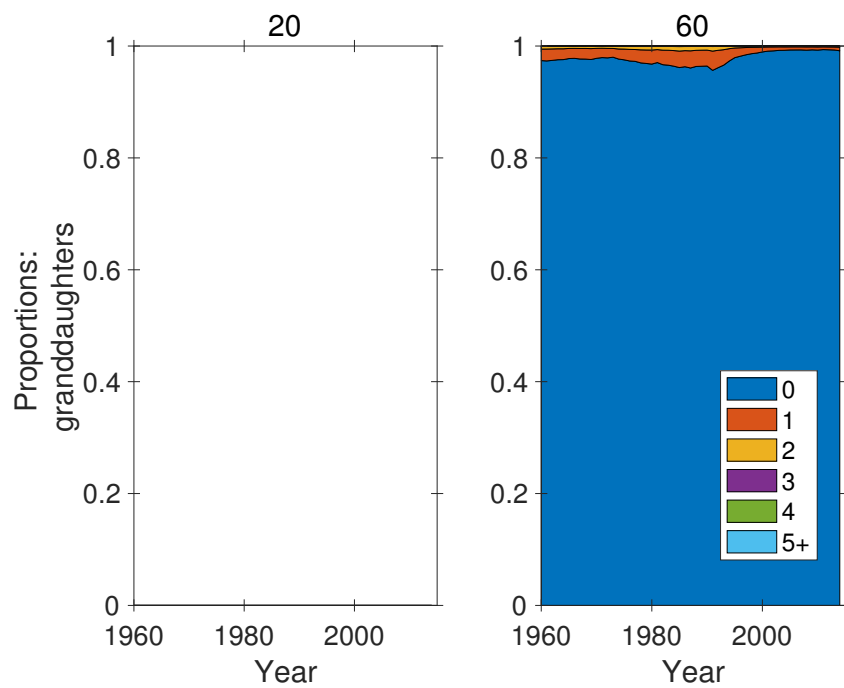


Figure S-43: Marginal parity distribution of granddaughters of Focal, as function of time, at ages 20 and 60 of Focal.

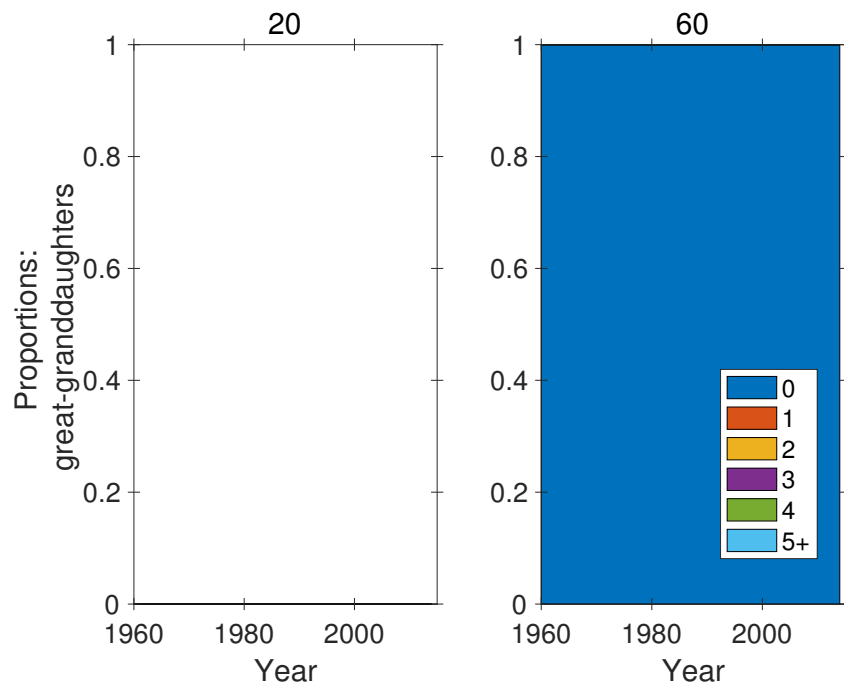


Figure S-44: Marginal parity distribution of great-granddaughters of Focal, as function of time, at ages 20 and 60 of Focal.

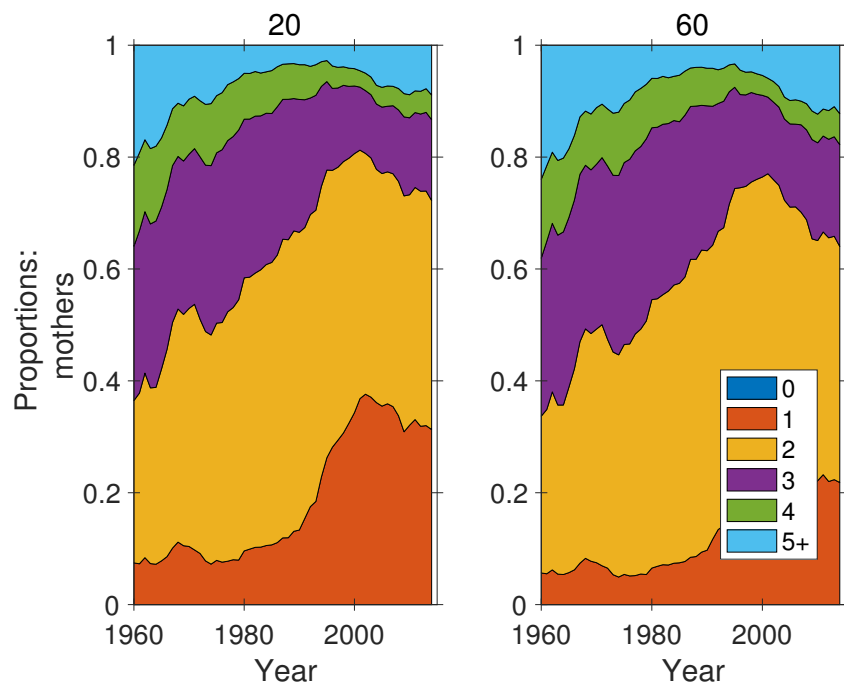


Figure S-45: Marginal parity distribution of mothers of Focal, as function of time, at ages 20 and 60 of Focal.

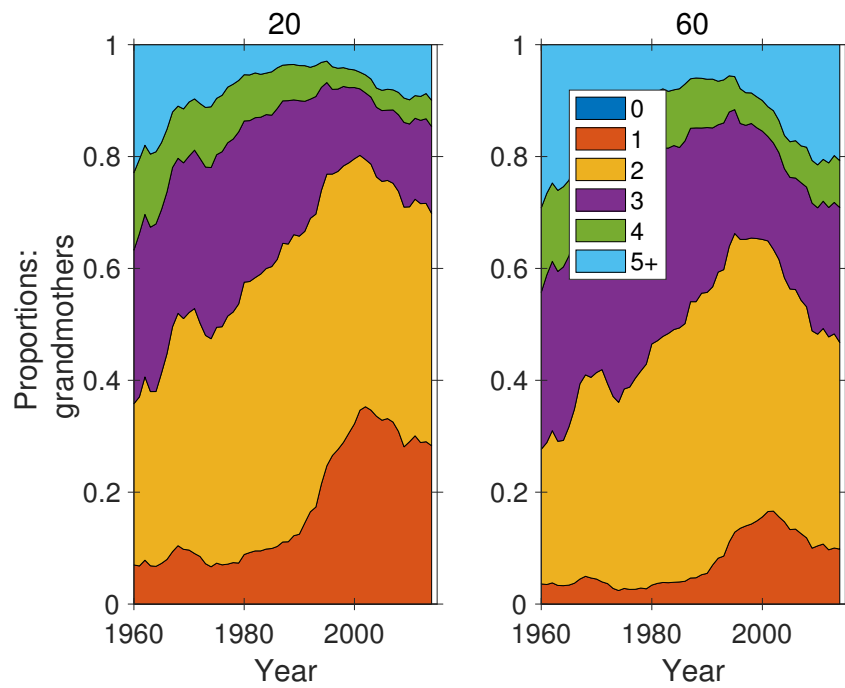


Figure S-46: Marginal parity distribution of grandmothers of Focal, as function of time, at ages 20 and 60 of Focal.

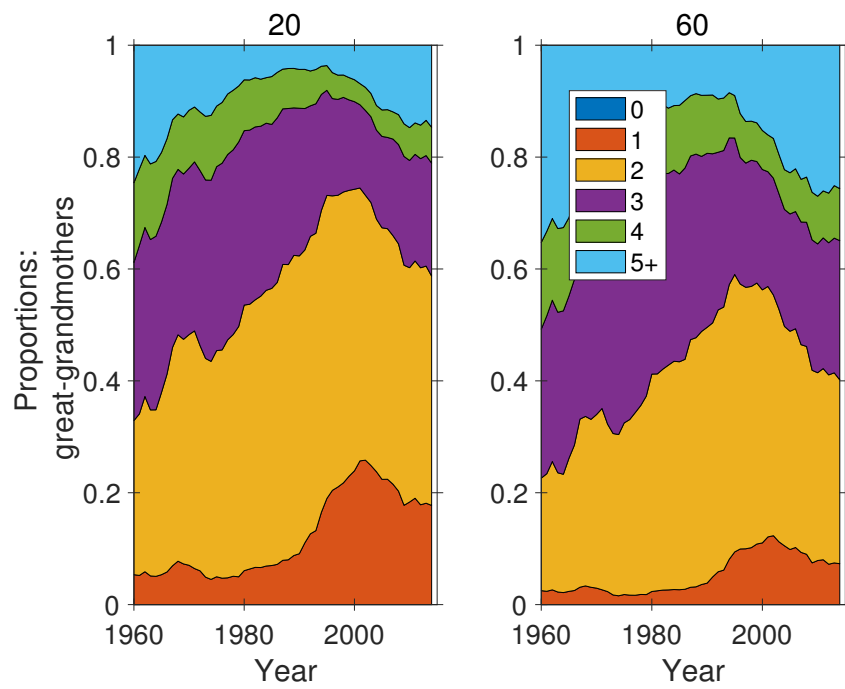


Figure S-47: Marginal parity distribution of great-grandmothers of Focal, as function of time, at ages 20 and 60 of Focal.

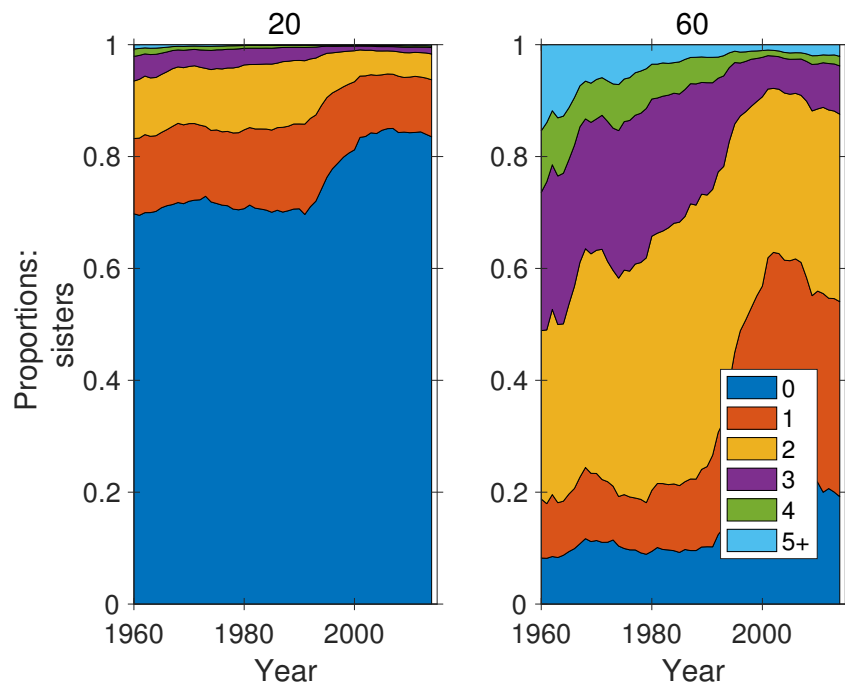


Figure S-48: Marginal parity distribution of sisters of Focal, as function of time, at ages 20 and 60 of Focal.

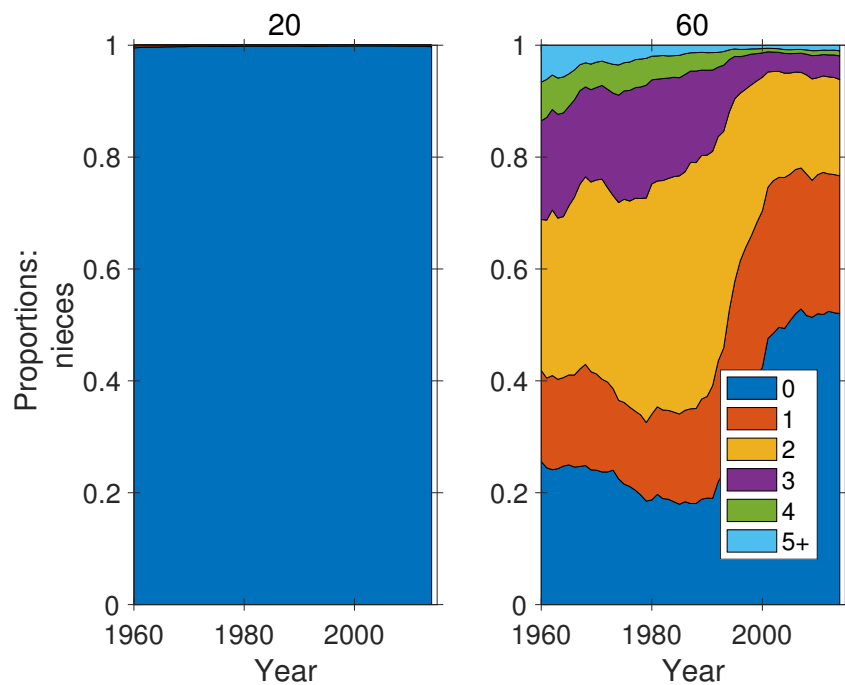


Figure S-49: Marginal parity distribution of nieces of Focal, as function of time, at ages 20 and 60 of Focal.

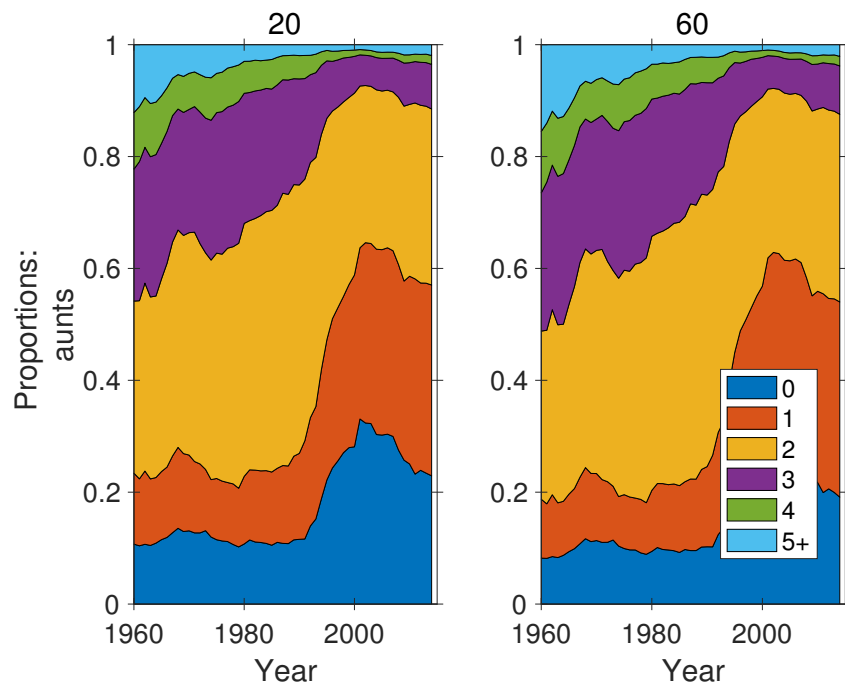


Figure S-50: Marginal parity distribution of aunts of Focal, as function of time, at ages 20 and 60 of Focal.

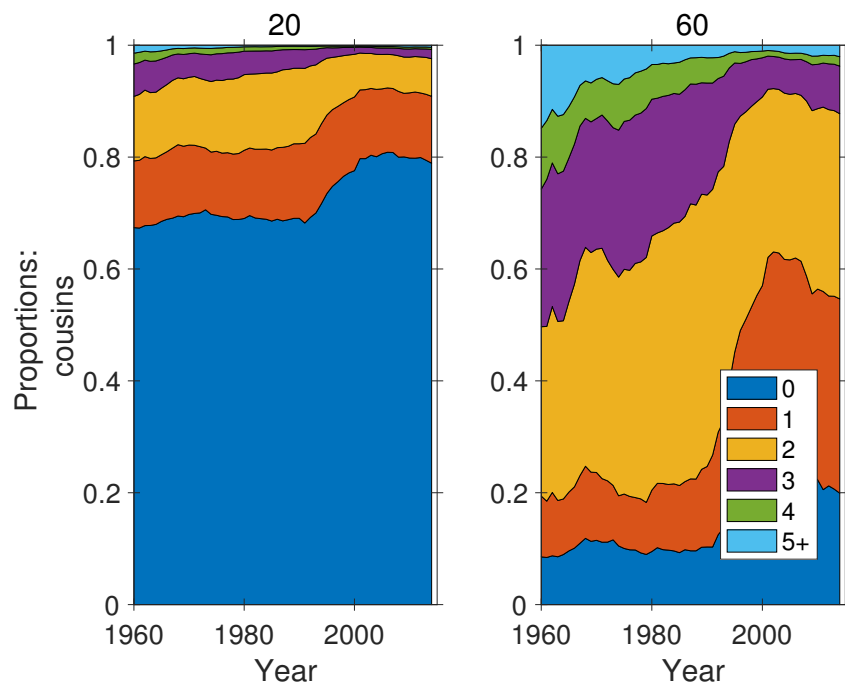


Figure S-51: Marginal parity distribution of cousins of Focal, as function of time, at ages 20 and 60 of Focal.

7 Prevalence of low parity kin over time

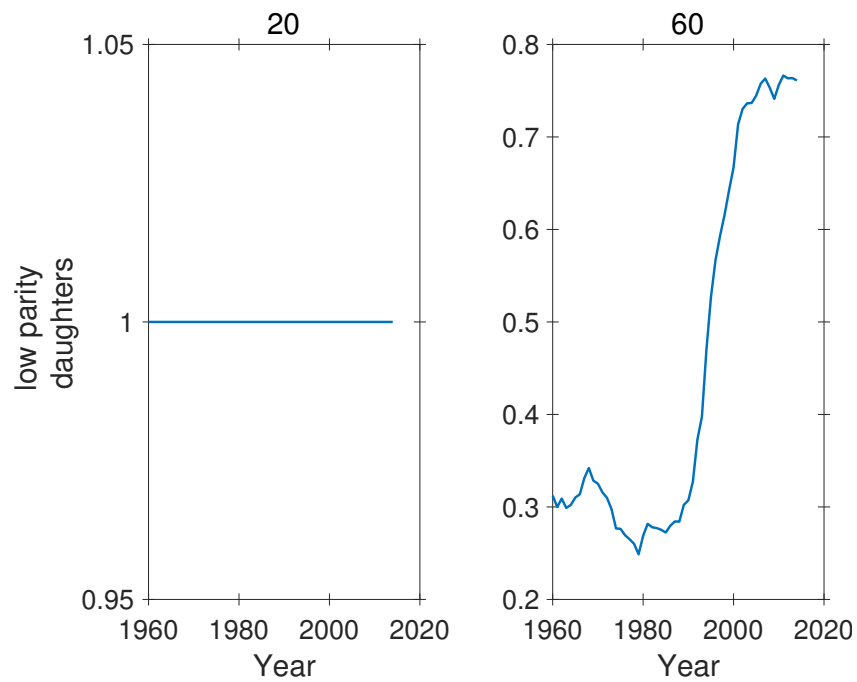


Figure S-52: Proportion of low parity (parities 0 and 1) daughters of Focal as a function of time, for ages 20 and 60 of Focal. Note different ordinate scales.

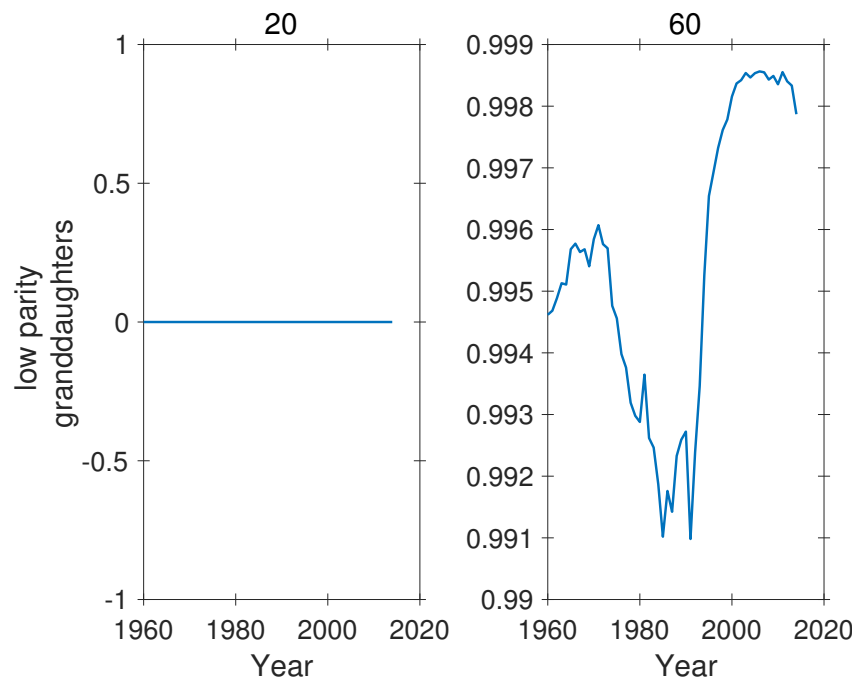


Figure S-53: Proportion of low parity (parities 0 and 1) granddaughters of Focal as a function of time, for ages 20 and 60 of Focal. Note different ordinate scales.

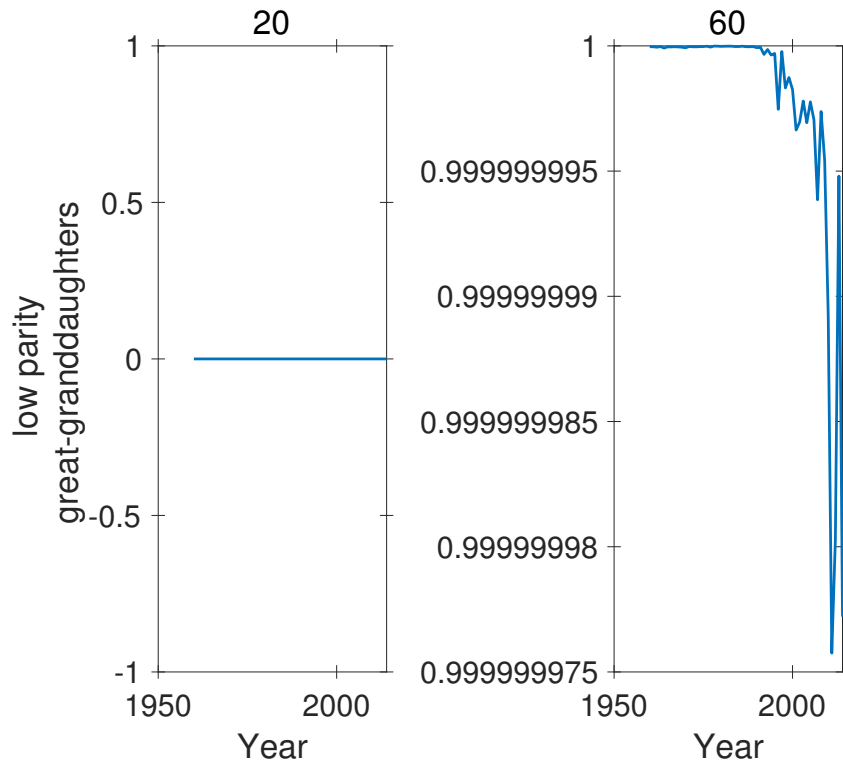


Figure S-54: Proportion of low parity (parities 0 and 1) great-granddaughters of Focal as a function of time, for ages 20 and 60 of Focal. Note different ordinate scales.

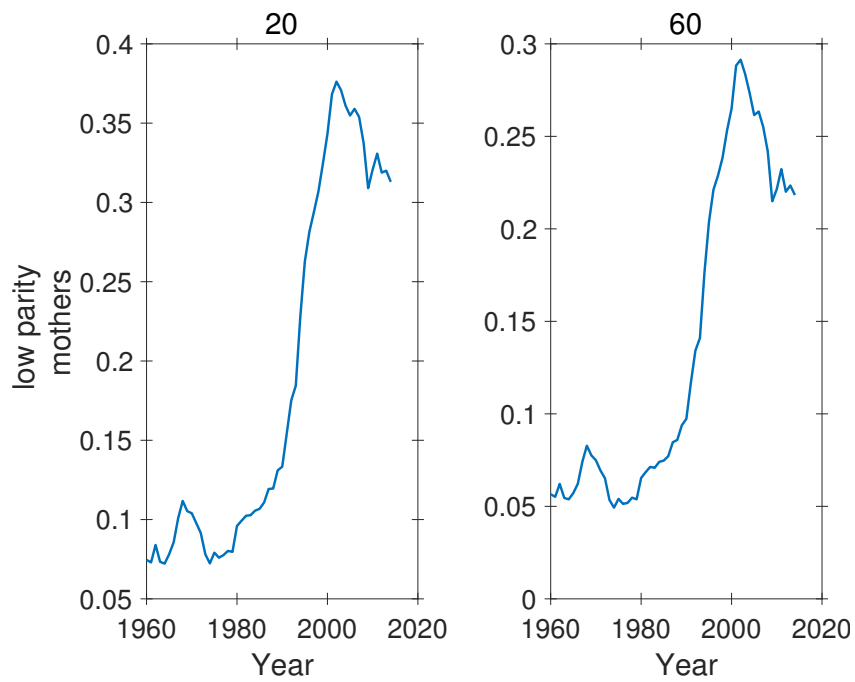


Figure S-55: Proportion of low parity (parities 0 and 1) mothers of Focal as a function of time, for ages 20 and 60 of Focal. Note different ordinate scales.

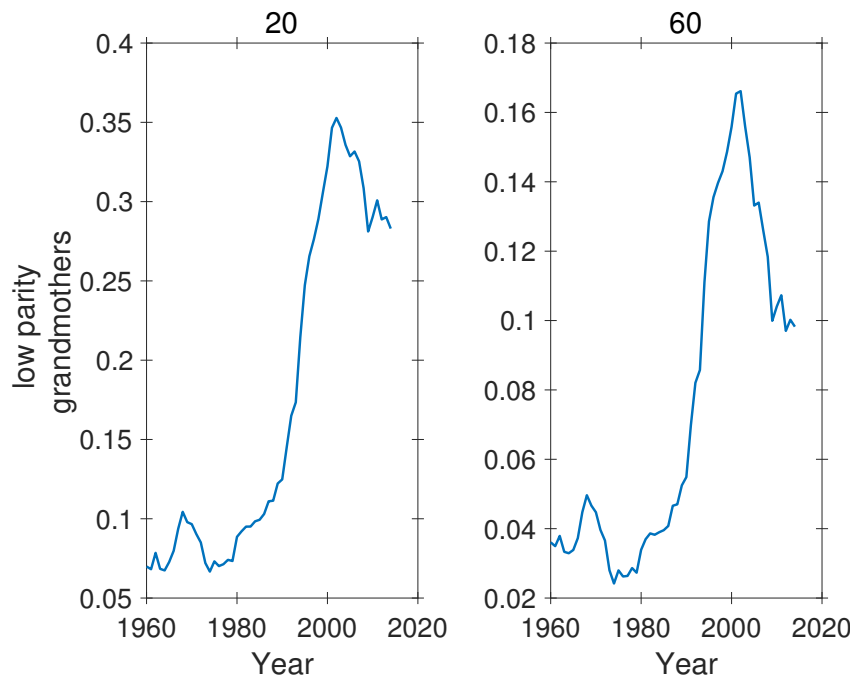


Figure S-56: Proportion of low parity (parities 0 and 1) grandmothers of Focal as a function of time, for ages 20 and 60 of Focal. Note different ordinate scales.

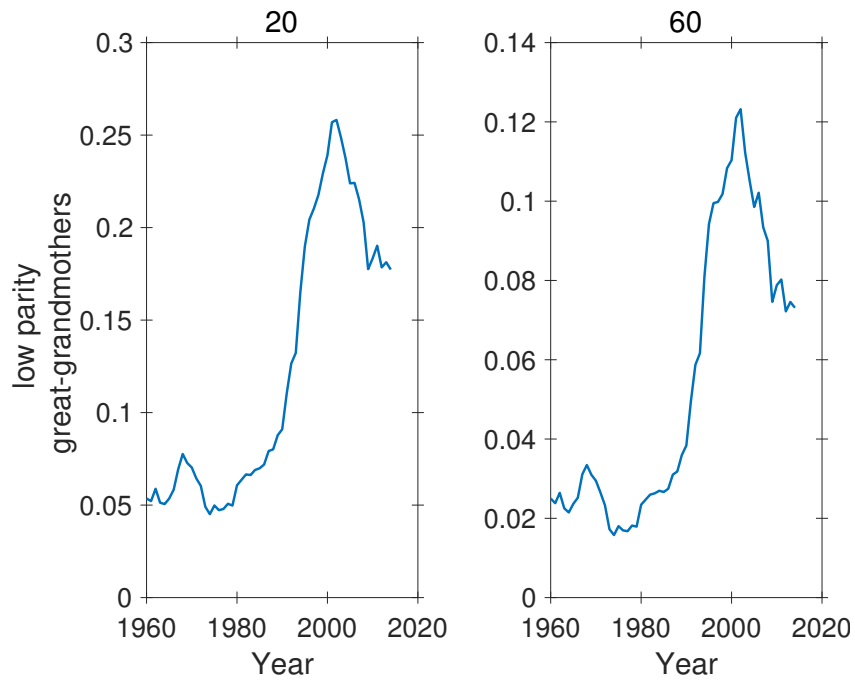


Figure S-57: Proportion of low parity (parities 0 and 1) great-grandmothers of Focal as a function of time, for ages 20 and 60 of Focal. Note different ordinate scales.

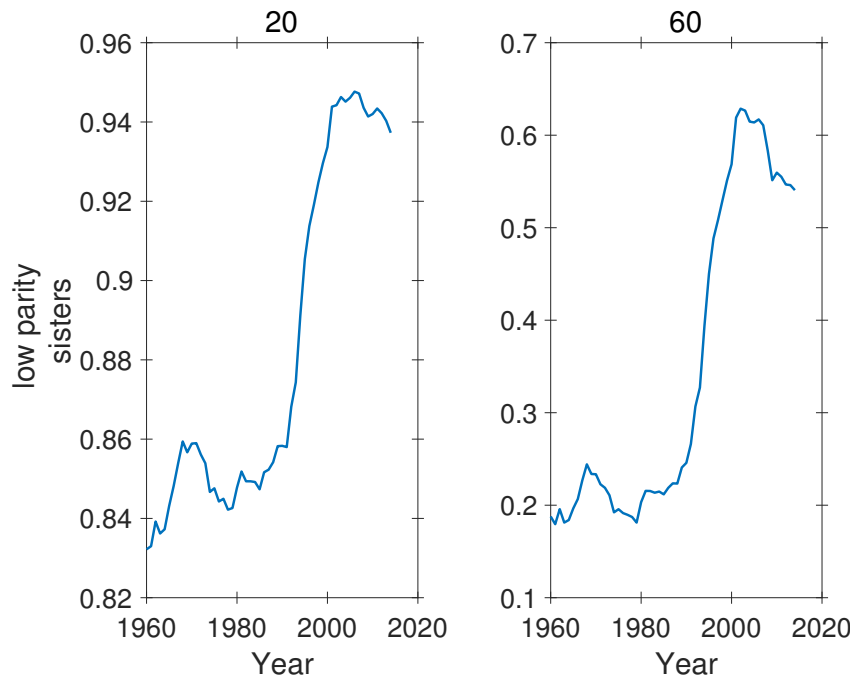


Figure S-58: Proportion of low parity (parities 0 and 1) sisters of Focal as a function of time, for ages 20 and 60 of Focal. Note different ordinate scales.

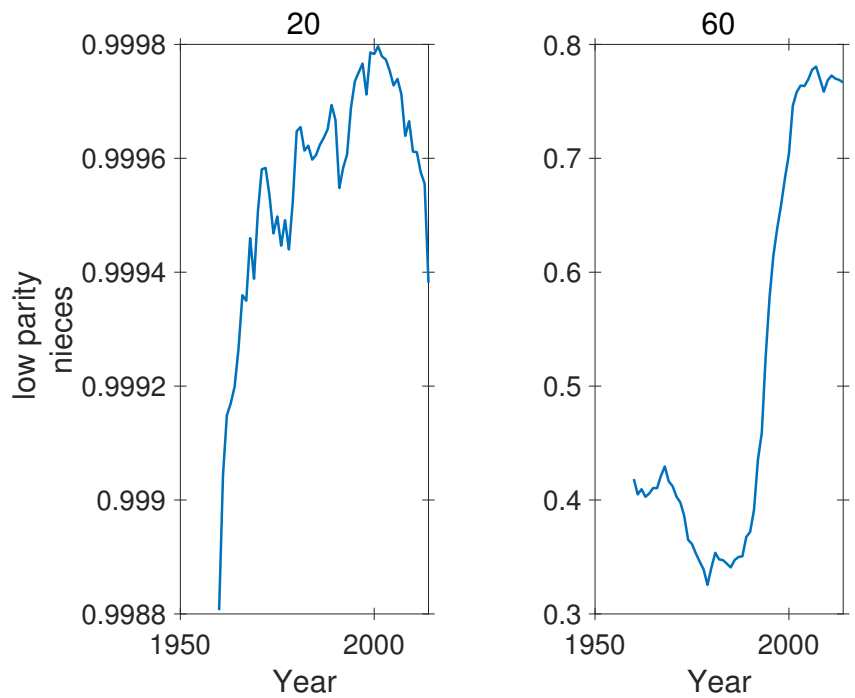


Figure S-59: Proportion of low parity (parities 0 and 1) nieces of Focal as a function of time, for ages 20 and 60 of Focal. Note different ordinate scales.

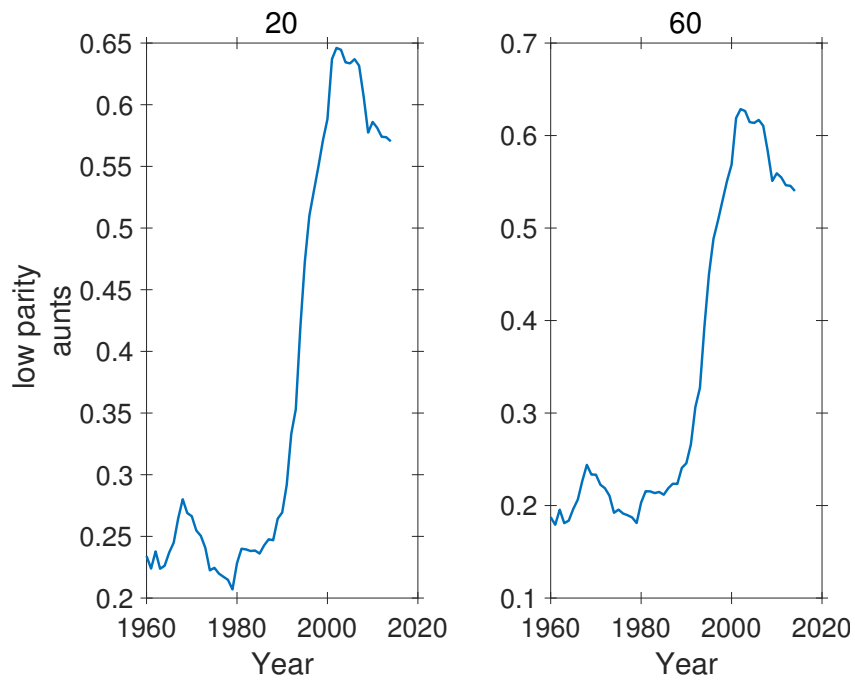


Figure S-60: Proportion of low parity (parities 0 and 1) aunts of Focal as a function of time, for ages 20 and 60 of Focal. Note different ordinate scales.

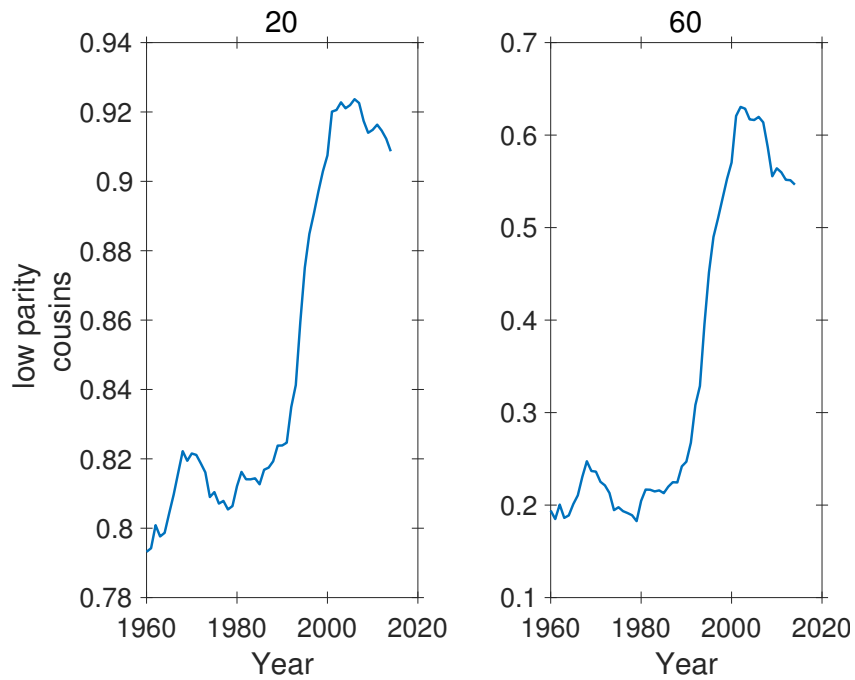


Figure S-61: Proportion of low parity (parities 0 and 1) cousins of Focal as a function of time, for ages 20 and 60 of Focal. Note different ordinate scales.