

Figure S1: Pairwise motion uncorrected and corrected inset images of a mid-sagittal slice of all subjects included in this study.

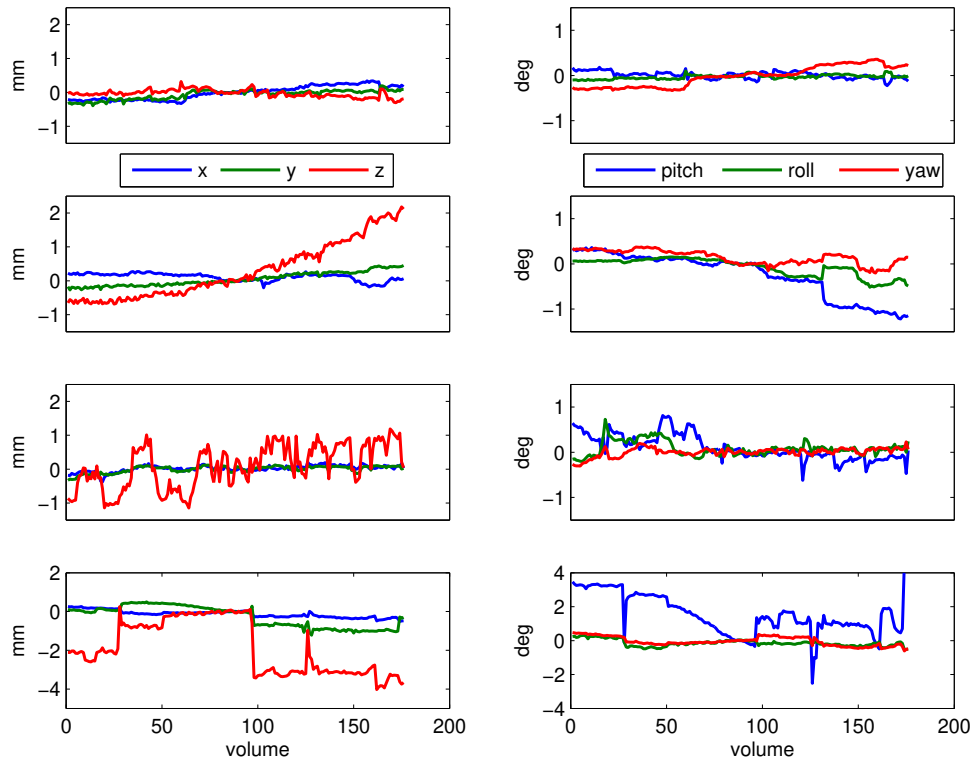


Figure S2: Translation and rotation parameters of four selected subjects, as displayed in Fig. 6. The average extent of motion from top to bottom was $m = 0.21$ mm, 0.52 mm, 0.55 mm and 1.54 mm. Note the different scaling of the bottom plots, corresponding to the subject with the largest extent of motion.

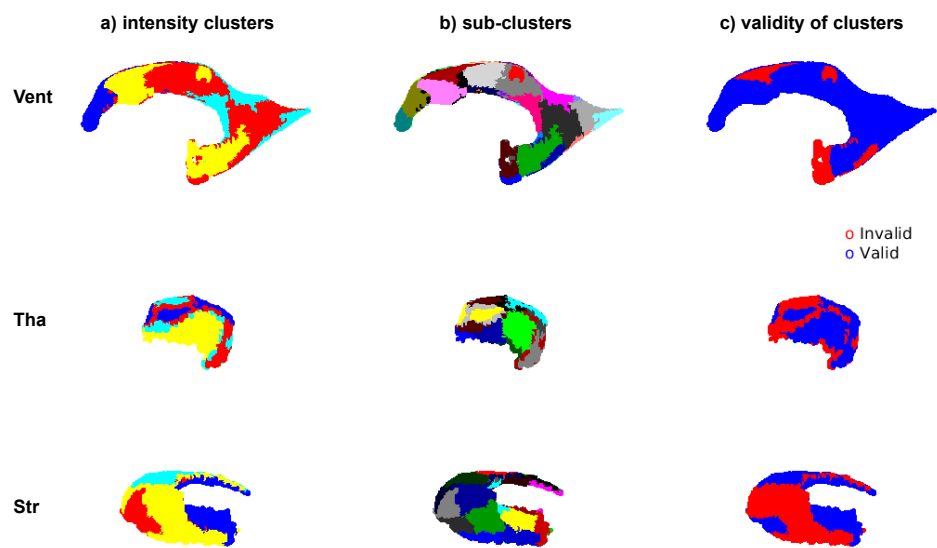


Figure S3: Illustration of the clustering process, for ventricles, thalamus and striatum ROIs. (a) First, four large clusters are found with comparable intensity in the outer edge. (b) Subsequently, sub-clusters are found inside these regions. (c) After curve fitting, validity of fits is plotted.