

## Supplementary material

### *Multi-modal approach for the characterization of resin carriers in Daylight Fluorescent*

#### *Pigments*

Alba Alvarez Martín<sup>1,2\*§</sup>, Stefanie De Winter<sup>1,3§</sup>, Gert Nuyts<sup>1</sup>, Joen Hermans<sup>4</sup>, Koen Janssens<sup>1</sup>,  
Geert Van der Snickt<sup>1,5</sup>

<sup>1</sup>AXES, Department of Physics, University of Antwerp, Antwerp, Belgium

<sup>2</sup>Museum Conservation Institute, Smithsonian Institution, Suitland MD, United States of America

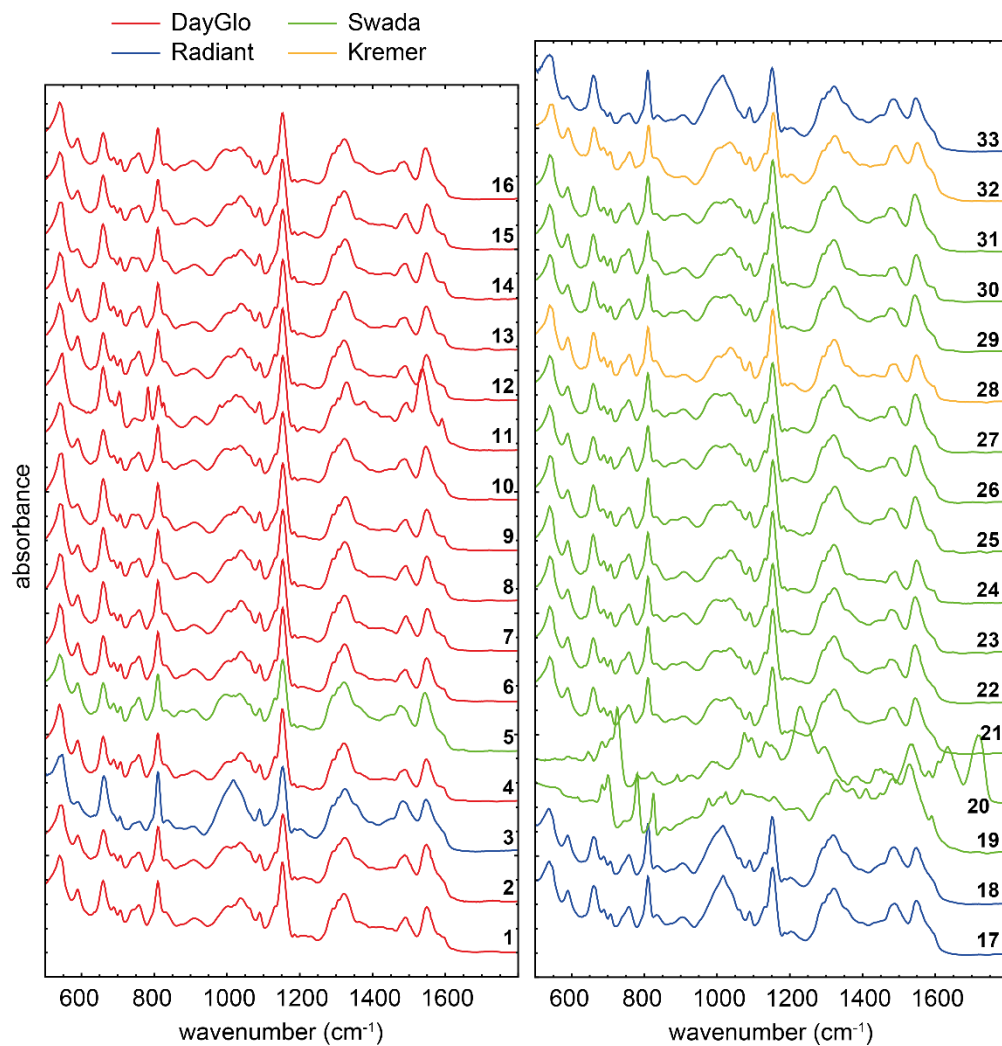
<sup>3</sup>Art History Research Unit and Lieven Gevaert Centre, University of Leuven, Leuven, Belgium

<sup>4</sup>Van't Hoff Institute for Molecular Sciences University of Amsterdam, Amsterdam, The Netherlands

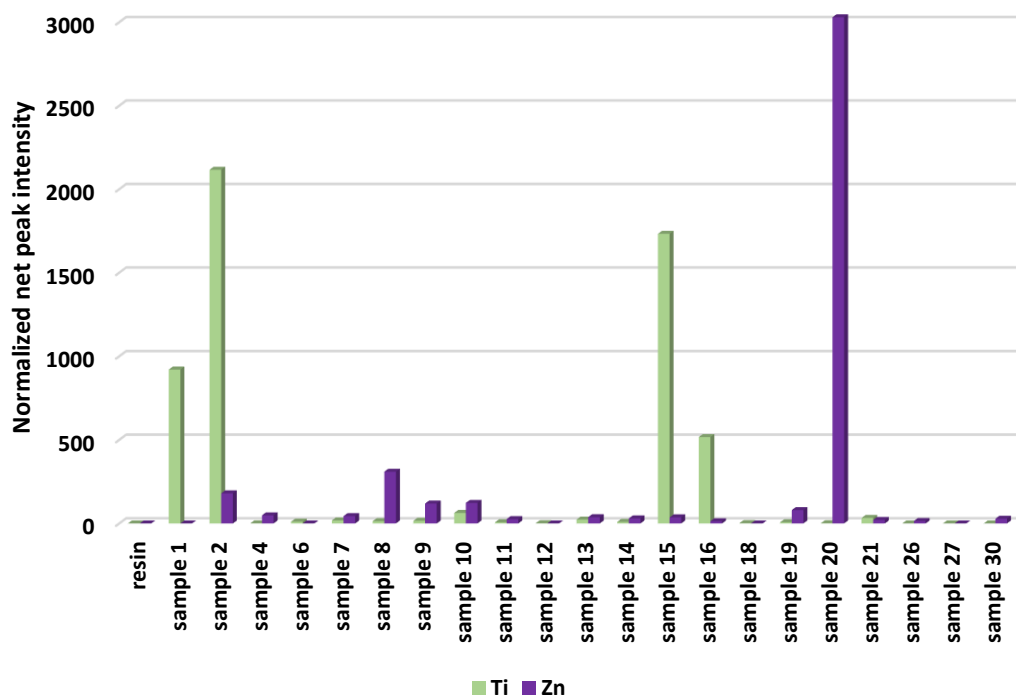
<sup>5</sup>ARCHES, Faculty of Design Sciences, University of Antwerp, Mutsaardstraat 31, 2000 Antwerp, Belgium

§Both authors contributed equally to the work.

\*Corresponding author: alba.alvarez@usal.es



**Figure S1.** Normalized ATR-FTIR spectra of all daylight fluorescent colors in the range 500-1800 cm<sup>-1</sup>. Numbers correspond with the sample numbers in Table 1, and the colors refer to the manufacturer of the product.



**Figure S2.** XRF analysis of all samples investigated in this study. For complete information of the samples see Table 1.