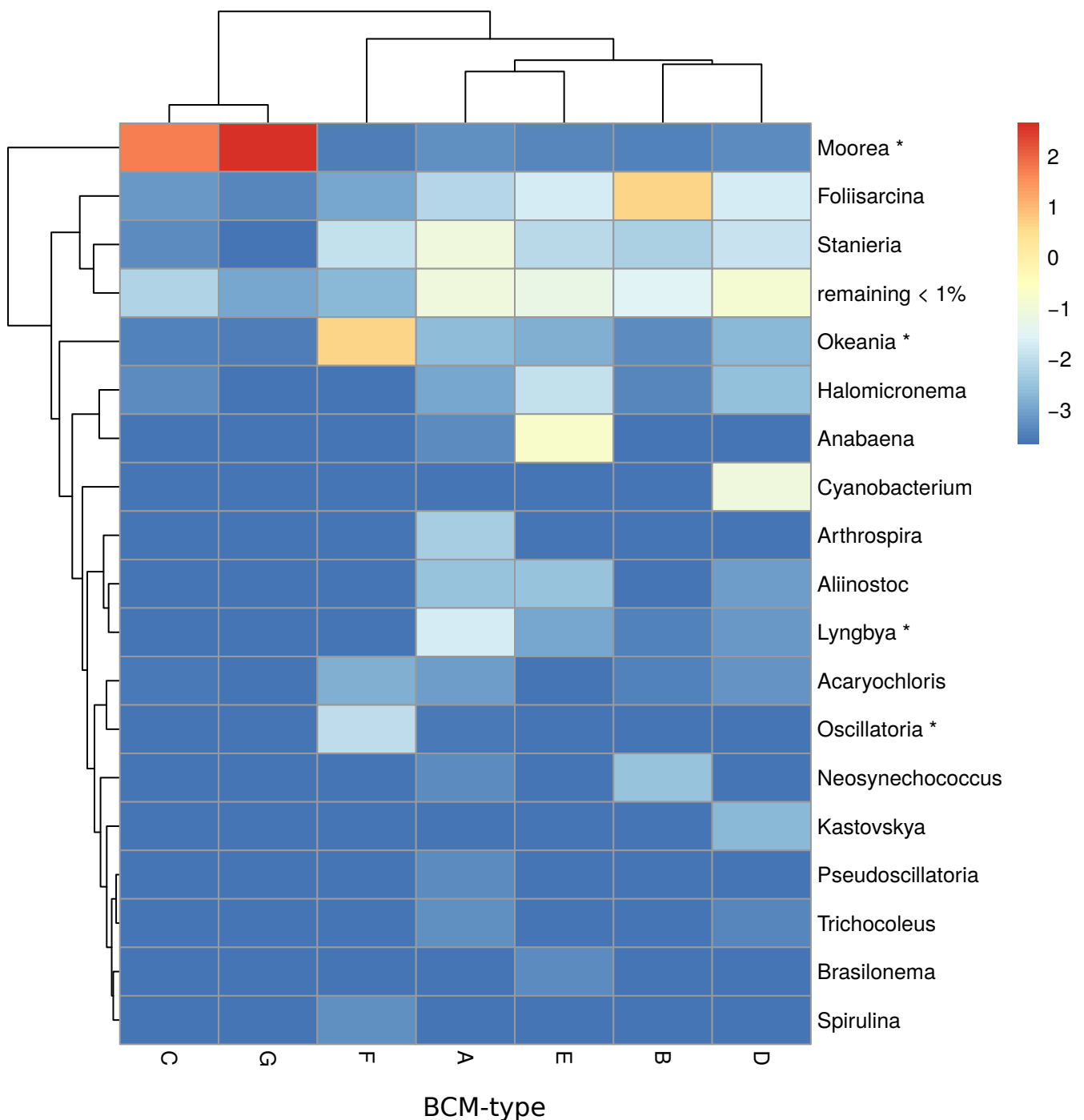


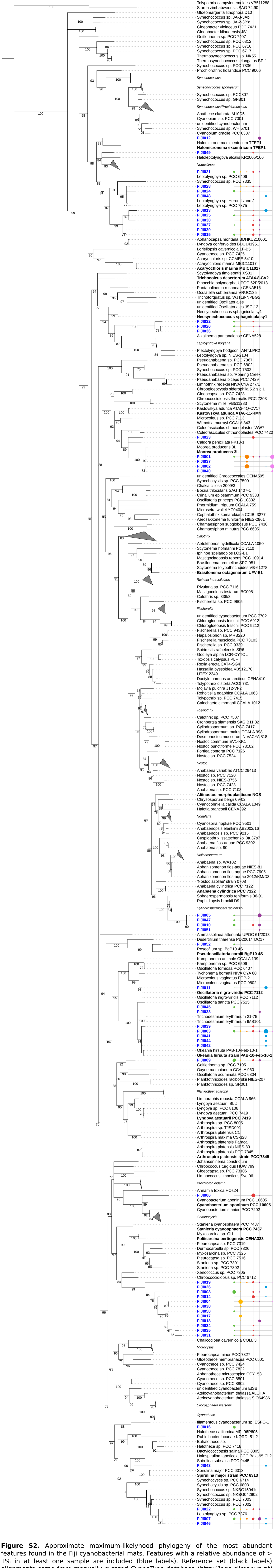
# First insights into the impacts of benthic cyanobacterial mats on fish herbivory functions on a nearshore coral reef

Amanda K Ford<sup>1,2</sup>, Petra M Visser<sup>3</sup>, Maria J van Herk<sup>3</sup>, Evelien Jongepier<sup>4</sup>, Victor Bonito<sup>5</sup>

## Supplementary Figures



**Figure S1.** Heatmap of logit-transformed relative abundance of cyanobacterial genera. Quantified by 16S rRNA amplicon sequencing and annotated using BLAST. Genera with >95% best-blast similarity are marked with \*. Only features with a relative abundance of >1% in at least one sample were included. Dendrograms are based on Euclidean distances of normalized relative abundances.



**Figure S2.** Approximate maximum-likelihood phylogeny of the most abundant features found in the Fiji cyanobacterial mats. Features with a relative abundance of > 1% in at least one sample are included (blue labels). Reference set (black labels) alignments come from manually curated CyanoType database (<http://lege.cimmar.up.pt/cyanotype/>), complemented with best-blast hits (bold font). Circle sizes are proportional to the relative abundance of each feature in each of the seven identified BCM-types.