



## UvA-DARE (Digital Academic Repository)

### Heterogeneity of the immunopathology in advanced multiple sclerosis

*An autopsy cohort analysis*

Fransen, N.L.

#### Publication date

2021

[Link to publication](#)

#### Citation for published version (APA):

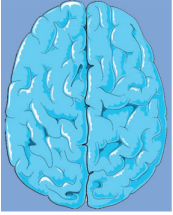
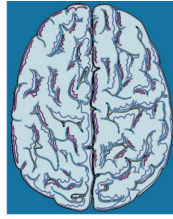
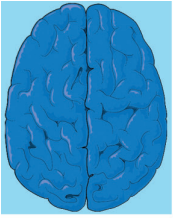
Fransen, N. L. (2021). *Heterogeneity of the immunopathology in advanced multiple sclerosis: An autopsy cohort analysis*. [Thesis, externally prepared, Universiteit van Amsterdam].

#### General rights

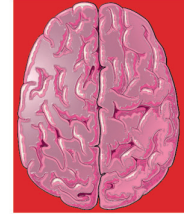
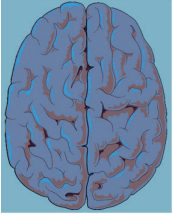
It is not permitted to download or to forward/distribute the text or part of it without the consent of the author(s) and/or copyright holder(s), other than for strictly personal, individual use, unless the work is under an open content license (like Creative Commons).

#### Disclaimer/Complaints regulations

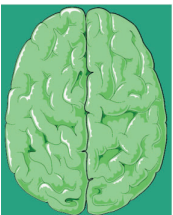
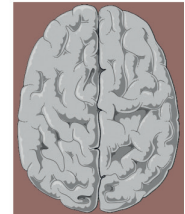
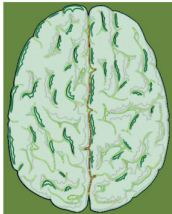
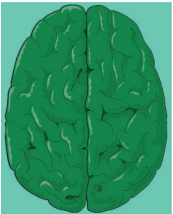
If you believe that digital publication of certain material infringes any of your rights or (privacy) interests, please let the Library know, stating your reasons. In case of a legitimate complaint, the Library will make the material inaccessible and/or remove it from the website. Please Ask the Library: <https://uba.uva.nl/en/contact>, or a letter to: Library of the University of Amsterdam, Secretariat, Singel 425, 1012 WP Amsterdam, The Netherlands. You will be contacted as soon as possible.



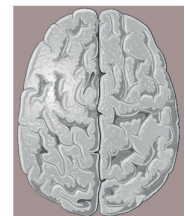
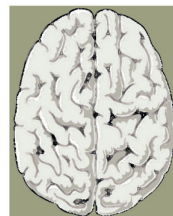
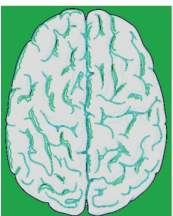
**HETEROGENEITY  
OF THE  
IMMUNOPATHOLOGY  
IN ADVANCED  
MULTIPLE SCLEROSIS**



An autopsy cohort analysis



Nina L. Fransen





# **Heterogeneity of the immunopathology in advanced multiple sclerosis**

An autopsy cohort analysis

N.L. Fransen

The studies described in this thesis were all funded bij Stichting MS Research and “De VriendenLoterij”. Financial support for printing this thesis was kindly provided by Stichting MS Research.

Cover & layout    YvonGo, Hilvarenbeek  
Printed by        Van de Ven, Hilvarenbeek

© N.L. Fransen. All rights reserved. No parts of this thesis may be reproduced, stored or transmitted in any way by any means without the prior permission of the author, or when applicable, of the publishers of the scientific papers.

# Heterogeneity of the immunopathology in advanced multiple sclerosis

An autopsy cohort analysis

ACADEMISCH PROEFSCHRIFT

ter verkrijging van de graad van doctor

aan de Universiteit van Amsterdam

op gezag van de Rector Magnificus

prof. dr. ir. K.I.J. Maex

ten overstaan van een door het College voor Promoties ingestelde commissie,

in het openbaar te verdedigen in de Agnietenkapel

op vrijdag 2 juli 2021, te 13.00 uur

door Nina Louise Fransen

geboren te AMSTERDAM

## PROMOTIECOMMISSIE

### Promotor

Prof. dr. I. Huitinga                      Universiteit van Amsterdam

### Copromotor

Dr. J. Smolders                              NIN-KNAW

### Overige leden

Prof. dr. P.J. Lucassen                      Universiteit van Amsterdam

Prof. dr. W.A. van Gool                      Universiteit van Amsterdam

Prof. dr. E.M.A. Aronica                      Universiteit van Amsterdam

Prof. dr. F. Koning                              Universiteit Leiden

Prof. dr. med. T. Kuhlmann                      University of Münster

Dr. B.A. de Jong                              Vrije Universiteit Amsterdam

Faculteit der Natuurwetenschappen, Wiskunde en Informatica





## THESIS CONTENT

Chapter 1	Introduction and aim of thesis	9
Part 1	Substantial inflammatory lesion activity in advanced multiple sclerosis	
Chapter 2	Inflammation is associated with demyelination and neurodegeneration in the brainstem of patients with progressive multiple sclerosis <i>In prep</i> <b>Fransen NL</b> , Vincenten, MCJ, Amed S, Gommerman JL, Huitinga I, Ramaglia, V	33
Chapter 3	Progressive multiple sclerosis patients show substantial inflammatory lesion activity that correlates with clinical disease severity and sex: a retrospective autopsy cohort analysis <i>Acta Neuropathol.</i> 2018 Apr; 135(4): 511-528 Luchetti S*, <b>Fransen NL*</b> , van Eden CG, Ramaglia V, Mason M, Huitinga I	63
Chapter 4	Tissue resident memory T cells populate the human brain <i>Nat Commun.</i> 2018 Nov 2; 9(1): 4593 Smolders J*, Heutink KM*, <b>Fransen NL*</b> , Remmerswaal EBM, Hombrink P, Ten Berge IJM, van Lier RAW, Huitinga I, Hamann J	95
Chapter 5	Tissue resident memory T cells invade the brain parenchyma in multiple sclerosis white matter lesions <i>Brain.</i> 2020 June; 143(6): 1714–1730 <b>Fransen NL</b> , Hsiao C, van der Poel M, Engelenburg HJ, Verdaasdonk K, Vincenten MCJ, Remmerswaal EBM, Kuhlmann T, Mason MRJ, Hamann J*, Smolders J*, Huitinga I*	125
	Addendum: letters to the editor of <i>Brain</i>	162
	Tissue-resident CD8 <sup>+</sup> memory T cells in multiple sclerosis <i>Brain.</i> 2021 Jan; 144(1): e7 Hohlfeld, R, Beltran E, Gerdes LA and Dornmair K	163
	Reply: Tissue-resident CD8 <sup>+</sup> memory T cells in multiple sclerosis <i>Brain.</i> 2021 Jan; 144(1): e8 Smolders J, <b>Fransen NL</b> , Huitinga I, Hamann J	167

Part 2	Heterogeneity of the immunopathology in advanced multiple sclerosis	
Chapter 6	Absence of B cells in brainstem and white matter lesions associates with a less severe disease and absence of oligoclonal bands in multiple sclerosis <i>Neurol Neuroimmunol Neuroinflamm.</i> 2021 Mar; 8(2): e955 <b>Fransen NL</b> , De Jong B, Vincenten MCJ, Heß K, Kuhlmann T, Hamann J, Huitinga I*, Smolders J*	173
Chapter 7	Sex differences in neuroinflammation and neuroactive steroid synthesis in the multiple sclerosis cortical grey matter <i>Submitted</i> <b>Fransen NL</b> , Mason M, Luchetti S, Huitinga I	201
Chapter 8	Post-mortem multiple sclerosis lesion pathology is influenced by single nucleotide polymorphisms <i>Brain Pathol.</i> 2020 Jan; 30(1): 106-119 <b>Fransen NL</b> , Crusius JBA, Smolders J, Mizze MR, van Eden CG, Luchetti S, Remmerswaal EBM, Hamann J, Mason MRJ, Huitinga I	227
Chapter 9	Discussion	257
Appendices	Summary	299
	Nederlandse samenvatting	304
	Author contributions	309
	List of publications	314
	PhD Portfolio	316
	Dankwoord	318
	About the author	322