

iScience, Volume 24

Supplemental information

**Striatal dopamine synthesis capacity
reflects smartphone social activity**

Andrew Westbrook, Arko Ghosh, Ruben van den Bosch, Jessica I. Määttä, Lieke Hofmans, and Roshan Cools

Supplemental Information

Supplemental Data

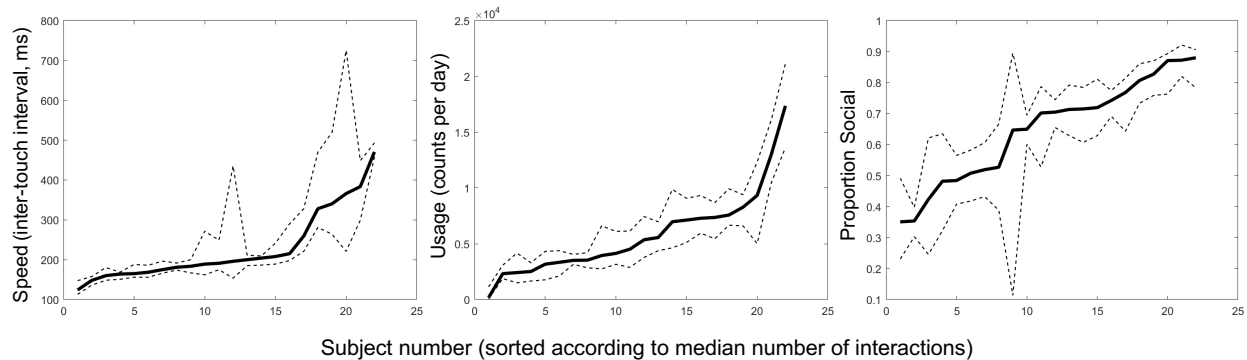


Figure S1. Independent Variables by Participant. Median (solid line) and inter-quartile range (dashed lines), across days, for three smartphone usage variables used in our main analyses, for all participants. Related to STAR Methods.

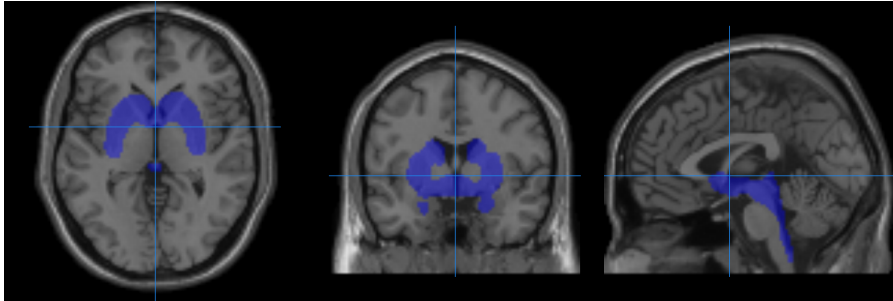


Figure S2. Small Volume Mask for Multiple Comparisons Correction. Volume encompasses all voxels with greater than 3 standard deviations above the mean dopamine synthesis capacity signal across the whole brain. Crosshairs are at MNI [0,0,0]. Related to STAR Methods.

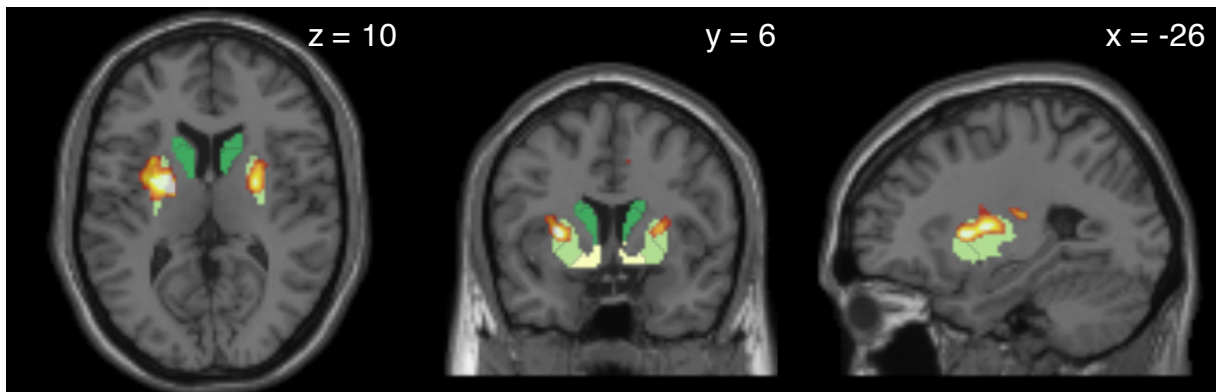


Figure S3. Thresholded Clusters where the Proportion of Social Interactions Correlates with Dopamine Synthesis Capacity, Related to Figure 1B. Clusters of voxels showing a reliable relationship between dopamine synthesis capacity and the proportion of social interactions following $P < 0.001$ thresholded cluster formation and small volume cluster correction at FWE $P < 0.05$. As in the main text, clusters overlap an independently-defined segmentation of the striatum including the caudate nucleus (dark green), anterior and posterior putamen (yellow-green), and ventral striatum (pale yellow). Related to Figure 1B.

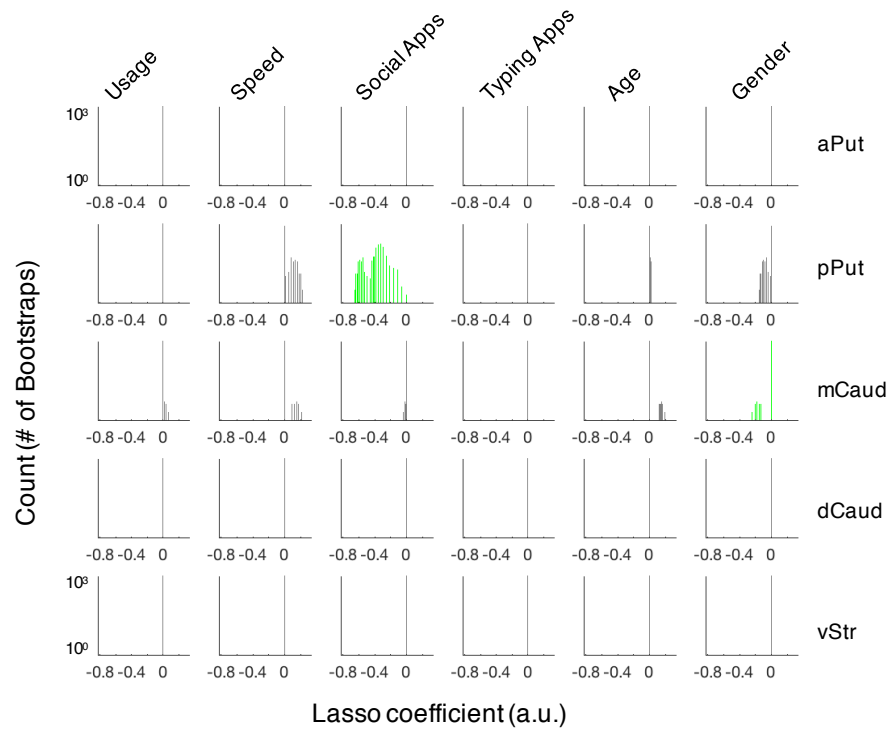


Figure S4. Lasso Regression of All Independent Variables in All Striatal Subregions. Distributions of lasso regression coefficients testing for relationships between dopamine synthesis capacity in striatal subregions and key predictors of interest. Regression coefficients different from 0 based on 0.5 and 99.5 percentile range of the 1000 bootstrapped lasso coefficients are shown in green. Related to STAR Methods.