



UvA-DARE (Digital Academic Repository)

Joint thrust and TMD resummation in electron-positron and electron-proton collisions

Makris, Y.; Ringer, F.; Waalewijn, W.J.

DOI

[10.1007/JHEP02\(2021\)070](https://doi.org/10.1007/JHEP02(2021)070)

Publication date

2021

Document Version

Final published version

Published in

Journal of High Energy Physics

License

CC BY

[Link to publication](#)

Citation for published version (APA):

Makris, Y., Ringer, F., & Waalewijn, W. J. (2021). Joint thrust and TMD resummation in electron-positron and electron-proton collisions. *Journal of High Energy Physics*, 2021(2), [70]. [https://doi.org/10.1007/JHEP02\(2021\)070](https://doi.org/10.1007/JHEP02(2021)070)

General rights

It is not permitted to download or to forward/distribute the text or part of it without the consent of the author(s) and/or copyright holder(s), other than for strictly personal, individual use, unless the work is under an open content license (like Creative Commons).

Disclaimer/Complaints regulations

If you believe that digital publication of certain material infringes any of your rights or (privacy) interests, please let the Library know, stating your reasons. In case of a legitimate complaint, the Library will make the material inaccessible and/or remove it from the website. Please Ask the Library: <https://uba.uva.nl/en/contact>, or a letter to: Library of the University of Amsterdam, Secretariat, Singel 425, 1012 WP Amsterdam, The Netherlands. You will be contacted as soon as possible.

UvA-DARE is a service provided by the library of the University of Amsterdam (<https://dare.uva.nl>)

Joint thrust and TMD resummation in electron-positron and electron-proton collisions

Yiannis Makris,^a Felix Ringer^b and Wouter J. Waalewijn^{c,d}

^a*INFN Sezione di Pavia,
via Bassi 6, I-27100 Pavia, Italy*

^b*Nuclear Science Division, Lawrence Berkeley National Laboratory,
Berkeley, CA 94720, U.S.A.*

^c*Institute for Theoretical Physics Amsterdam and Delta Institute for Theoretical Physics,
University of Amsterdam,
Science Park 904, 1098 XH Amsterdam, The Netherlands*

^d*Nikhef, Theory Group,
Science Park 105, 1098 XG, Amsterdam, The Netherlands*

E-mail: yiannis.makris@pv.infn.it, fmringer@lbl.gov,
w.j.waalewijn@uva.nl

ABSTRACT: We present the framework for obtaining precise predictions for the transverse momentum of hadrons with respect to the thrust axis in e^+e^- collisions. This will enable a precise extraction of transverse momentum dependent (TMD) fragmentation functions from a recent measurement by the Belle Collaboration. Our analysis takes into account, for the first time, the nontrivial interplay between the hadron transverse momentum and the cut on the thrust event shape. To this end, we identify three different kinematic regions, derive the corresponding factorization theorems within Soft Collinear Effective Theory, and present all ingredients needed for the joint resummation of the transverse momentum and thrust spectrum at NNLL accuracy. One kinematic region can give rise to non-global logarithms (NGLs), and we describe how to include the leading NGLs. We also discuss alternative measurements in e^+e^- collisions that can be used to access the TMD fragmentation function. Finally, by using crossing symmetry, we obtain a new way to constrain TMD parton distributions, by measuring the displacement of the thrust axis in ep collisions.

KEYWORDS: QCD Phenomenology, Deep Inelastic Scattering (Phenomenology)

ARXIV EPRINT: [2009.11871](https://arxiv.org/abs/2009.11871)

Contents

1	Introduction	1
2	Theoretical framework	4
2.1	Kinematic bounds	5
2.2	Region 1: $\sqrt{\tau} \gg q_T/Q \sim \tau$	7
2.3	Region 3: $\sqrt{\tau} \sim q_T/Q \gg \tau$	9
2.4	Region 2: $\sqrt{\tau} \gg q_T/Q \gg \tau$	10
2.5	Matching regions	10
3	Fixed-order ingredients	11
3.1	Hard function	12
3.2	Invariant-mass jet function	12
3.3	Thrust soft function	12
3.4	Thrust-TMD soft function	13
3.5	Thrust-TMD collinear-soft function	14
3.6	Unsubtracted TMD fragmentation function	14
3.7	Invariant mass-TMD fragmenting jet function	15
4	Alternative methods to extract TMD FFs	15
5	Extracting TMD PDFs in DIS using the thrust axis	17
6	Conclusions	19
A	Anomalous dimensions	21

1 Introduction

Quarks and gluons produced in short-distance scattering processes fragment into hadrons at large distances, due to the confining nature of QCD. The fraction of the longitudinal momentum of the initial parton carried by these hadrons is described by fragmentation functions (FFs) [1–4]. FFs are independent of the scattering process, and enter in the factorization theorem of the corresponding cross section. The (typically small) difference between the direction of the hadron and initial parton it fragments from, can be taken into account by transverse momentum dependent (TMD) FFs [5–10]. See refs. [11, 12] for reviews of (TMD) FFs. TMD FFs are the final-state counter parts of TMD parton distribution functions (PDFs), which describe the intrinsic transverse momentum of partons inside nucleons.

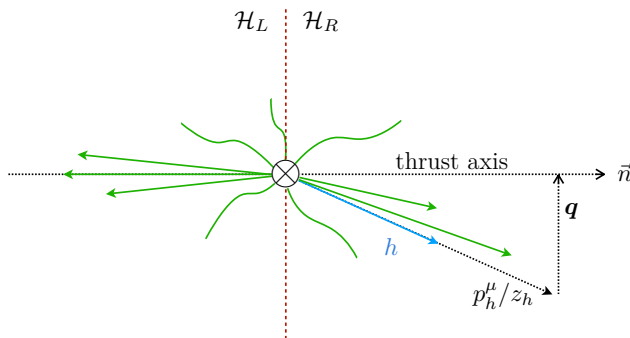


Figure 1. Illustration of the measurement of the transverse momentum $\mathbf{q} = \mathbf{p}_h/z_h$ of a hadron (blue) relative to the thrust axis (black dashed) in an e^+e^- collision denoted by \otimes . The plane perpendicular to the thrust axis (red dashed) divides the space into two hemispheres: \mathcal{H}_L and \mathcal{H}_R .

Various determinations of TMD PDFs and FFs from experimental data have been performed: global extractions of unpolarized TMD PDFs and FFs [13–15], extractions of TMD PDFs [16, 17], and polarized TMD PDFs and FFs [18–22]. One process that is used for these extractions is hadron-pair production in e^+e^- annihilation, for which the factorization theorem of the cross section differential in the relative transverse momentum of the two hadrons has the following schematic form, $\sigma \sim HDDS$. This involves a TMD FF for each of the identified hadrons, denoted by D , while the hard function H describes the hard scattering and the TMD soft function S encodes the effect of soft radiation.¹ Another process is SIDIS, where a single hadron is identified in the final state. The cross section differential in the hadron transverse momentum factorizes as $\sigma \sim HFDS$, where F is the TMD PDF for the nucleon the electron scatters off. To disentangle the contribution from TMD FFs and TMD PDFs in SIDIS, a reliable understanding of TMD FFs from e^+e^- data is of tremendous value. Consequently, this is critical to the success of the science program of the Electron-Ion Collider (EIC), where the extraction of TMD PDFs is one of the main goals [23]. Alternatively, measurements involving jets instead of final-state hadrons have been proposed in recent years to extract TMD PDFs in SIDIS [24–28].

Recently, the Belle Collaboration measured the transverse momentum of hadrons in electron-positron annihilation relative to the thrust axis [29], illustrated in figure 1. The thrust of an e^+e^- event is defined as [30]

$$1 - \tau = T = \max_{\hat{t}} \frac{\sum_i |\hat{t} \cdot \vec{p}_i|}{\sum_i |\vec{p}_i|}, \tag{1.1}$$

where the sum runs over all particles i in the final state with 3-momentum \vec{p}_i . The unit vector \hat{t} that maximizes T , defines the direction of the thrust axis, and naturally divides the final state into two hemispheres depending on the sign of $\hat{t} \cdot \vec{p}_i$ (see figure 1). Most events have $\tau \ll 1$, and in this case the final state consists of two highly-collimated back-to-back jets. The maximum value of $\tau = 1/2$ corresponds to spherically symmetric events. The

¹These TMD FFs are referred to as “unsubtracted”, as one typically absorbs the square root of the TMD soft function into each of the TMD FFs.

cross section reported in ref. [29] is differential in

$$z_h = 2E_h/Q, \quad p_{hT} \equiv |\mathbf{p}_h|, \quad \tau, \quad (1.2)$$

where E_h is the hadron energy, Q is the center-of-mass energy, and p_{hT} is the transverse momentum of the identified hadron. The results from Belle are of great interest in order to study TMD evolution effects, which receive a nonperturbative contribution through the *universal* rapidity anomalous dimension (Collins-Soper kernel),² and test universality of TMDs by comparing with other processes, such as SIDIS, Drell-Yan or even jet substructure measurements. Furthermore, it will be interesting to test perturbative QCD at the lower energy of the Belle experiment, where nonperturbative effects are larger. Their high statistics allow for more precise and more differential measurements, such as the one we explore here.

The first factorization theorem for the cross section differential in the observables in eq. (1.2) assumed $p_{hT}/z_h \sim \sqrt{\tau}Q \ll Q$ [38], which corresponds to one of the kinematic regions we consider. Phenomenological studies related to the Belle measurement were performed in refs. [39, 40], and the breaking of universality of nonperturbative soft effects between dihadron and single hadron production in e^+e^- was discussed in ref. [41]. Recently, ref. [42] proposed integrating out the thrust variable τ , and carried out the resummation of transverse momentum p_{hT} and threshold logarithms $1 - z_h$. This cross section contains non-global logarithms (NGLs) [43] because the transverse momentum measurement only constrains radiation in one hemisphere. The perturbative accuracy of observables that require the resummation of NGLs is currently limited to next-to-leading logarithmic (NLL) accuracy. We will also encounter NGLs, but in our analysis that is differential in thrust, they only appear in a restricted and clearly identified region of phase space.

In this paper we derive the theoretical framework that is needed for the accurate extraction of TMD FFs from the cross section measured by the Belle Collaboration, crucially taking correlations between (the cut on) thrust and the transverse momentum measurement into account. These correlations enable us to identify the correct matrix elements and proper factorization of the cross section. Specifically, we find three different kinematic regions and derive the factorization theorems for the corresponding cross section using Soft Collinear Effective Theory (SCET) [44–48]. An extension of SCET, called SCET₊ [49–51], is required to jointly resum the large logarithmic corrections in *both* the thrust event shape τ and the transverse momentum $q_T \equiv p_{hT}/z_h$. We assume that neither z_h nor $1 - z_h$ is much smaller than one, as we do not resum the additional logarithms that would arise in either limit. For each kinematic region, we present the necessary ingredients to achieve the joint resummation at next-to-next-to-leading logarithmic (NNLL) accuracy. Non-global logarithms occur if the thrust measurement is dominated by the hemisphere that does not contain the observed hadron, since the transverse momentum measurement only probes the radiation in the hemisphere containing the hadron, and we describe how to include the leading NGLs, reducing the accuracy in this limited region of phase space to NLL. The

²Currently the nonperturbative contribution to the rapidity anomalous dimension is constrained by fits to experimental data [14, 31–35], and methods for extracting it from lattice QCD are being explored [36, 37].

numerical implementation of these factorization formulae, as well as a detailed comparison with Belle data will be presented separately in ref. [52].

While our main focus is on the theoretical framework to describe the Belle measurement [29], we will also discuss alternative measurements in e^+e^- collisions to constrain TMD FFs. For example, one can measure the hadron transverse momentum relative to the Winner-Take-All (WTA) axis [53, 54], instead of the thrust axis. If the WTA axis of the hemisphere (jet) containing the hadron is used, this leads to a nonstandard TMD FF [55, 56]. However, we show that if instead the WTA axis of the other hemisphere is used, this provides direct access to TMD FFs without requiring a cut on additional resolution variables (like thrust) to ensure the dijet limit.

Interestingly, we note that our formalism can be extended to Deep-Inelastic Scattering (DIS) by crossing the hadron from the final state to the initial state. We propose a new method for extracting TMD PDFs in DIS, through the angle of the thrust axis with the beam axis in the Breit frame. We develop the factorization theorem for the cross section differential in the Bjorken variable x , the photon virtuality Q , the DIS thrust (or 1-jettiness), τ_{DIS} , and the transverse momentum of the virtual photon w.r.t. the thrust axis, for the various relevant kinematic regions. The factorization involves the universal (unsubtracted) TMD PDF and soft functions similar to those entering the factorization of the cross section for the Belle measurement. The nonperturbative contribution to the rapidity anomalous dimension is the same as for the CSS kernel [57] by consistency of factorization. In some of the kinematic regions, the leading nonperturbative effects associated with soft radiation is the same as in jet-mass measurements in pp collisions [58].

The outline of our paper is as follows: in section 2, we discuss in detail the factorization theorems for the three different kinematic regions. The ingredients needed to achieve the joint resummation at NNLL accuracy are collected in section 3. In section 4 we briefly discuss alternative measurements to extract TMD FFs in e^+e^- collisions. In section 5, we present results for an analogous measurement using thrust in Deep-Inelastic Scattering (DIS). We conclude and provide an outlook in section 6.

2 Theoretical framework

In this section we describe the theoretical framework for the $e^+e^- \rightarrow hX$ cross section differential in the energy fraction z_h and the transverse momentum $\mathbf{q} = \mathbf{p}_h/z_h$ of the hadron, and the thrust event shape τ . Dividing \mathbf{p}_h by z_h ensures that \mathbf{q} is a partonic variable that can be calculated in perturbation theory for $q_T \equiv |\mathbf{q}| \gg \Lambda_{\text{QCD}}$. We identify three kinematic regions, depending on the parametric relation between q_T and τ in section 2.1. The corresponding factorization theorems are discussed in sections 2.2 through 2.4. In section 2.5 we briefly discuss how to combine these predictions to obtain a matched result for the cross section. This analysis has important parallels with the theoretical framework and predictions for the joint measurement of the transverse momentum of the vector boson and beam thrust in the Drell-Yan process [50, 59]. A numerical implementation and comparison with experimental data will be presented in ref. [52].

2.1 Kinematic bounds

First we will argue that the kinematic bound on the phase space is $\sqrt{\tau} \gtrsim q_T/Q \gtrsim \tau$. To this end, we choose coordinates such that $\hat{t} = (0, 0, 1)$, and decompose the 4-momenta p_i^μ of final-state particles in terms of light-cone coordinates along the thrust axis

$$p_i = p_i^- \frac{n^\mu}{2} + p_i^+ \frac{\bar{n}^\mu}{2} + p_{i\perp}^\mu, \quad p_i^\pm = p_i^0 \mp p_i^3, \quad n^\mu = (1, 0, 0, 1), \quad \bar{n}^\mu = (1, 0, 0, -1). \quad (2.1)$$

This leads to the following expression for the thrust and transverse momentum measurement

$$\tau = \frac{1}{Q} \sum_i \min\{p_i^-, p_i^+\}, \quad \mathbf{p}_h = - \sum_{\substack{i \in \text{hemi} \\ i \neq h}} \mathbf{p}_i. \quad (2.2)$$

The first expression is obtained by rewriting eq. (1.1) in terms of light-cone coordinates, treating the final-state particles as massless. The second follows from the property of the thrust axis that the total transverse momentum in each separate hemisphere is zero, and the sum on i runs over the hemisphere containing the identified hadron except for the hadron itself, as indicated.

Employing the (massless) on-shell condition $p_i^- p_i^+ = \mathbf{p}_i^2$,

$$q_T^2 = \frac{1}{z_h^2} \mathbf{p}_h^2 = \frac{1}{z_h^2} \left(\sum_{\substack{i \in \text{hemi} \\ i \neq h}} \mathbf{p}_i \right)^2 \lesssim \sum_i \mathbf{p}_i^2 \leq \sum_i \min\{p_i^-, p_i^+\} Q = \tau Q^2. \quad (2.3)$$

Here our assumption that z_h is not small entered, in order to conclude that $q_T/Q \lesssim \sqrt{\tau}$. Conversely,

$$q_T = \frac{1}{z_h} |\mathbf{p}_h| = \frac{1}{z_h} \left| \sum_{\substack{i \in \text{hemi} \\ i \neq h}} \mathbf{p}_i \right| \sim \sum_i |\mathbf{p}_i| \geq \sum_i \min\{p_i^-, p_i^+\} = \tau Q, \quad (2.4)$$

from which we conclude $q_T \gtrsim \tau Q$. In principle $q_T \ll \tau Q$ is possible: first of all, this could happen because thrust involves a scalar sum and q_T a vector sum. This would require large cancellations in the vector sum, which only occur in a power-suppressed region of phase space. Secondly, eq. (2.4) assumes that the contributions of both hemispheres to thrust are about the same size. However, there can be a large hierarchy between the amount of radiation in each hemisphere, with the more energetic hemisphere dominating the thrust measurement. The q_T measurement is only sensitive to the radiation in the hemisphere containing the observed hadron, see eq. (2.2), so $q_T \ll \tau Q$ is possible if the observed hadron is in the less energetic hemisphere. This large hierarchy in radiation gives rise to non-global logarithms (NGLs) [43]. While there has been substantial progress in resumming NGLs [51, 60–65], there is no practical framework yet to extend this beyond the leading NGLs. Indeed, we will account for these logarithms by starting from the factorization for $q_T \sim \tau Q$ and including them as a correction. The phase-space boundaries are illustrated in figure 2 along with the three different kinematic regions for which we develop different factorization formulas below.

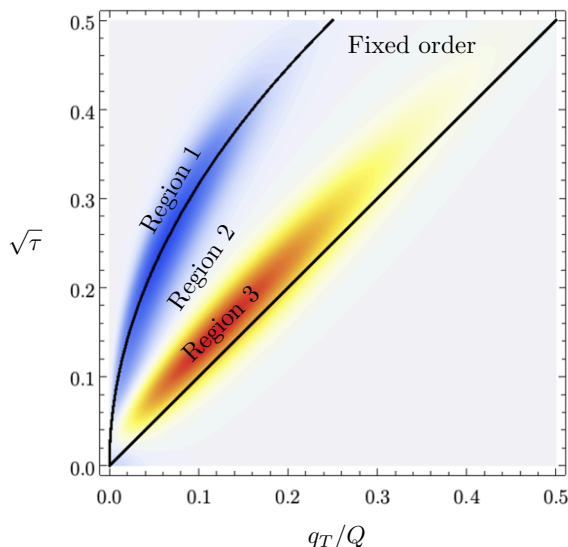


Figure 2. Illustration of the kinematic regions for the thrust τ and transverse momentum q_T/Q measurement in e^+e^- collisions, indicated by the different colors.

Regime:	1: $\sqrt{\tau} \gg q_T/Q \sim \tau$	2: $\sqrt{\tau} \gg q_T/Q \gg \tau$	3: $\sqrt{\tau} \sim q_T/Q \gg \tau$
n -collinear	$(q_T^2/Q, Q, q_T)$	$(q_T^2/Q, Q, q_T)$	$Q(\tau, 1, \sqrt{\tau})$
\bar{n} -collinear	$Q(1, \tau, \sqrt{\tau})$	$Q(1, \tau, \sqrt{\tau})$	$Q(1, \tau, \sqrt{\tau})$
n -collinear-soft		$(\tau Q, q_T^2/(\tau Q), q_T)$	
soft	$q_T(1, 1, 1)$	$\tau Q(1, 1, 1)$	$\tau Q(1, 1, 1)$

Table 1. The modes (rows) and the corresponding power counting of light-cone components (see eq. (2.1)) of momenta for the three kinematic regions (columns).

Given $\sqrt{\tau} \gtrsim q_T/Q \gtrsim \tau$, we identify the following three kinematic regions:

- Region 1: $\sqrt{\tau} \gg q_T/Q \sim \tau$,
- Region 2: $\sqrt{\tau} \gg q_T/Q \gg \tau$,
- Region 3: $\sqrt{\tau} \sim q_T/Q \gg \tau$,

in accord with the analysis in ref. [50]. We will always limit ourselves to $q_T/Q \ll 1$, since a description of the cross section in terms of TMD FFs is only valid in this case.³ Note that this implies $\tau \ll 1$. For each of these regions we now identify the modes in the effective field theory, which are summarized in table 1, and present the factorization theorem that can be used to perform the resummation.

³When $q_T/Q \sim 1$, the transverse momentum of the hadron is as large as the hard scale and is generated by the hard scattering. In that case only regular FFs are needed to describe the z_h dependence.

2.2 Region 1: $\sqrt{\tau} \gg q_T/Q \sim \tau$

In region 1 (and 3) q_T/Q and τ are not independent power counting parameters, so an effective theory with only collinear and soft degrees of freedom suffices. We start with a generic power counting for the light-cone components (p^+, p^-, p_\perp^μ) of their momenta

$$\begin{aligned} n\text{-collinear: } p_n^\mu &\sim Q(\lambda_n^2, 1, \lambda_n), \\ \bar{n}\text{-collinear: } p_{\bar{n}}^\mu &\sim Q(1, \lambda_{\bar{n}}^2, \lambda_{\bar{n}}), \\ \text{soft: } p_s^\mu &\sim Q(\lambda_s, \lambda_s, \lambda_s). \end{aligned} \tag{2.5}$$

Taking the hadron along the n -direction, eq. (2.2) implies

$$\tau \sim \lambda_n^2 + \lambda_{\bar{n}}^2 + \lambda_s, \quad q_T/Q \sim \lambda_n + \lambda_s. \tag{2.6}$$

Combining this with the parametric relation $q_T/Q \sim \tau$, we conclude

$$\lambda_{\bar{n}} \sim \sqrt{\tau}, \quad \lambda_n \sim \lambda_s \sim q_T/Q \sim \tau, \tag{2.7}$$

summarized in the corresponding column in table 1. Consequently, the λ_n^2 contribution to τ in eq. (2.6) is power-suppressed and can be dropped. Collinear radiation in the n -direction thus only contributes to the transverse momentum measurement of the hadron, collinear radiation in the \bar{n} -direction only affects the thrust measurement (this is always the case), while soft radiation contributes to both the thrust measurement and the transverse momentum of the hadron through recoil.

Throughout this work, we adopt the following definition of the Fourier transform and Laplace transform of a function f , as well as their inverse

$$\begin{aligned} f(\mathbf{b}) &= \int_{-\infty}^{\infty} d\mathbf{q} e^{-i\mathbf{b}\cdot\mathbf{q}} f(\mathbf{q}), & f(\mathbf{q}) &= \int_{-\infty}^{\infty} \frac{d\mathbf{b}}{(2\pi)^2} e^{i\mathbf{b}\cdot\mathbf{q}} f(\mathbf{b}), \\ f(u) &= \int_0^{\infty} d\tau e^{-u\tau} f(\tau), & f(\tau) &= \frac{1}{2\pi i} \int_{\gamma-i\infty}^{\gamma+i\infty} du e^{u\tau} f(u). \end{aligned} \tag{2.8}$$

We can then write the factorization theorem for region 1 as

$$\begin{aligned} \frac{d\sigma_1}{dz_h d\mathbf{q} d\tau} &= \sum_j \sigma_{0,j}(Q) \int_{-\infty}^{\infty} \frac{d\mathbf{b}}{(2\pi)^2} \int_{\gamma-i\infty}^{\gamma+i\infty} \frac{du}{2\pi i} e^{i\mathbf{b}\cdot\mathbf{q}+u\tau} H(Q, \mu) J\left(\frac{u}{Q^2}, \mu\right) S\left(\mathbf{b}, \frac{u}{Q}, \mu, \nu\right) \\ &\times D_{1,j\rightarrow h}\left(z_h, \mathbf{b}, \mu, \frac{\nu}{Q}\right) \left[1 + \mathcal{O}\left(\tau, \frac{q_T^2}{\tau Q^2}\right)\right], \end{aligned} \tag{2.9}$$

where the sum on j runs over (anti-)quark flavors. The variables \mathbf{b} and u are the Fourier conjugate of \mathbf{q} and the Laplace conjugate of τ , respectively, turning convolutions in the factorization theorem into multiplications.

We now discuss the various ingredients entering in eq. (2.9): the hard function H describes the short-distance $e^+e^- \rightarrow q\bar{q}$ process, and includes virtual hard corrections. The n -collinear radiation is encoded in the (unsubtracted) TMD FF $D_{1,j\rightarrow h}$, which is the object that we aim to extract. The \bar{n} -collinear radiation is described by the invariant-mass jet

function J , which is independent of the (light) quark flavor. The soft function S accounts for the contribution of soft radiation to the thrust event shape and the transverse momentum measurement. Note that only soft radiation in the hemisphere which contains the identified hadron affects \mathbf{b} , see eq. (2.2). This does not lead to non-global logarithms, because soft radiation in the other hemisphere is still constrained by the thrust measurement and $q_T/Q \sim \tau$. The one-loop expressions for these ingredients are collected in section 3.

The factorization of the cross-section in eq. (2.9) introduces rapidity divergences which arise from an incomplete factorization of collinear and soft radiation, and are not regulated by dimensional regularization. A range of different regularization procedures have been used to handle these divergences [10, 66–72] and in this work we use the η -regulator [68, 69]. This leads to a dependence on the rapidity scale ν in the soft and TMD fragmentation functions.

The large logarithms in q_T/Q and τ are resummed by evaluating the ingredients in eq. (2.9) at their natural renormalization scale μ and rapidity scale ν and evolving them to a common (μ, ν) scale using the renormalization group equation (RGEs). The rapidity RGE sums a single logarithm series, and corresponds to the Collin-Soper equation in the CSS approach [57]. While we collect explicit expressions for all relevant RGEs in section 3, here we give an instructive example: consider the hard function H , which satisfies

$$\frac{d}{d \ln \mu} H(Q, \mu) = \gamma_H(Q, \mu) H(Q, \mu). \tag{2.10}$$

Evaluating the anomalous dimension $\gamma_H(Q, \mu)$ up to the desired accuracy, we may solve eq. (2.10) to obtain the evolved hard function,

$$H(Q, \mu) = H(Q, \mu_H) \exp\left(\int_{\mu_H}^{\mu} \frac{d\mu}{\mu} \gamma_H(Q, \mu)\right) \stackrel{\text{LL}}{=} \left(1 - \frac{2\alpha_s C_F}{\pi} \ln^2 \frac{Q}{\mu_H}\right) \exp\left(-\frac{2\alpha_s C_F}{\pi} \ln^2 \frac{\mu}{\mu_H}\right) \tag{2.11}$$

The scale μ_H which sets the initial condition for the RGE is chosen to be Q such that the logarithms in the fixed-order expansion of the hard function are minimized. The RGE then exponentiates (resums) these logarithms, as is clear from the leading logarithmic expression. In terms of the conjugate variables \mathbf{b} and u , the RGEs are all multiplicative.

The natural renormalization scales of the ingredients in the factorization in eq. (2.9) are given by

$$\mu_H \sim Q, \quad \mu_J \sim \sqrt{\tau} Q, \quad \mu_D \sim \mu_S \sim 1/b_T \sim \tau Q, \tag{2.12}$$

with $b_T = |\mathbf{b}|$ and the corresponding rapidity scales are

$$\nu_D \sim Q, \quad \nu_S \sim 1/b_T. \tag{2.13}$$

While scales can directly be chosen in terms of τ , this leads to spurious divergences for q_T [73] that can be avoided by choosing scales in terms of b_T . The inverse Fourier transform in eq. (2.8) integrates over the nonperturbative region, requiring a prescription to avoid the Landau pole.

We end this section by addressing the NGLs that arise when $q_T/Q \ll \tau$. Their leading contribution comes from a correlated emission of two gluons, each going into one of the hemispheres. The energy of the emission in the hemisphere containing the hadron is set by q_T , whereas the energy of the emission in the other hemisphere is limited by τQ , leading to

$$S^{\text{NG}}\left(\frac{q_T}{\tau Q}\right) = 1 - \frac{\alpha_s^2 C_F C_A}{12} \ln^2\left(\frac{q_T}{\tau Q}\right) + \mathcal{O}(\alpha_s^3). \quad (2.14)$$

The resummed leading NGLs can be included using the standard hemisphere result S^{NG} as an extra factor in eq. (2.9), using e.g. the fit from ref. [43]. To obtain the correct *global* logarithms in this case requires one to “factorize” the soft function

$$S\left(\mathbf{b}, \frac{u}{Q}, \mu, \nu\right) = S_R\left(\mathbf{b}, \frac{u}{Q}, \mu, \nu\right) S_L\left(\frac{u}{Q}, \mu\right) + \mathcal{O}(\alpha_s^2) \quad (2.15)$$

where S_R describes emissions into the hemisphere containing the hadron and S_L emissions into the other hemisphere. Taking $\mu_R \sim 1/b_T$ and $\mu_L \sim \tau Q$, which are parametrically different in this NGL regime, is necessary to resum all the global logarithms of $q_T/(\tau Q)$.

2.3 Region 3: $\sqrt{\tau} \sim q_T/Q \gg \tau$

Next, we discuss the modes and factorization in region 3. Up to eq. (2.6) the analysis is the same as in region 1. However, the assumption $q_T/Q \sim \sqrt{\tau}$ implies

$$\lambda_{\bar{n}} \sim \lambda_n \sim \sqrt{\tau} \sim q_T/Q, \quad \lambda_s \sim \tau, \quad (2.16)$$

instead of eq. (2.7). In this case the collinear radiation in the n -direction contributes to both the transverse momentum of the hadron and the thrust measurement, while soft radiation only affects thrust, leading to the following factorization theorem [38]

$$\begin{aligned} \frac{d\sigma_3}{dz_h d\mathbf{q} d\tau} &= \sum_j \sigma_{0,j}(Q) \int_{\gamma-i\infty}^{\gamma+i\infty} \frac{du}{2\pi i} e^{u\tau} H(Q, \mu) J\left(\frac{u}{Q^2}, \mu\right) S_{\text{thr}}\left(\frac{u}{Q}, \mu\right) \mathcal{G}_{j \rightarrow h}\left(\frac{u}{Q^2}, z_h, \mathbf{q}, \mu\right) \\ &\times \left[1 + \mathcal{O}\left(\tau, \frac{q_T^2}{Q^2}, \frac{\tau^2 Q^2}{q_T^2}\right)\right]. \end{aligned} \quad (2.17)$$

The new ingredients, compared to eq. (2.9), are the thrust soft function S_{thr} and the generalized fragmenting jet function (FJF) \mathcal{G} , which replaces the TMD FF. From this we conclude that region 3 is not interesting for constraining nonperturbative TMD physics. Indeed, in this case the leading effect of nonperturbative physics arises from the cut on thrust, and the parameter controlling its dominant effect has been fitted from data [74].

In eq. (2.17) only \mathcal{G} contributes to the transverse momentum, so there are no rapidity divergences (nor is there a need to Fourier transform). The large logarithms of τ and q_T/Q are resummed by evolving all ingredients from their natural scales

$$\mu_H \sim Q, \quad \mu_J \sim \mu_G \sim \sqrt{\tau} Q, \quad \mu_{S_{\text{thr}}} \sim \tau Q, \quad (2.18)$$

to a common scale μ , using the RGEs. Explicit expressions for the ingredients in eq. (2.17) and their anomalous dimensions are collected in section 3.

2.4 Region 2: $\sqrt{\tau} \gg q_T/Q \gg \tau$

We will now consider region 2, which is the most hierarchical case. If one starts from eq. (2.6), the assumption $\sqrt{\tau} \gg q_T/Q \gg \tau$ implies

$$\lambda_{\bar{n}} \sim \sqrt{\tau}, \quad \lambda_n \sim q_T/Q, \quad \lambda_s \sim \tau. \quad (2.19)$$

So \bar{n} -collinear and soft radiation contribute to thrust, while only n -collinear radiation affects the transverse momentum measurement. This does not lead to a consistent factorization theorem. Because τ and q_T/Q are no longer correlated there is an additional collinear-soft mode, whose power counting is fixed by the fact that it contributes to both τ and q_T [50]

$$n\text{-collinear-soft: } p_{Cs}^\mu \sim (\tau Q, q_T^2/(\tau Q), q_T) \quad (2.20)$$

The factorization theorem in region 2 is given by

$$\begin{aligned} \frac{d\sigma_2}{dz_h d\mathbf{q} d\tau} &= \sum_j \sigma_{0,j}(Q) \int_{-\infty}^{\infty} \frac{d\mathbf{b}}{(2\pi)^2} \int_{\gamma-i\infty}^{\gamma+i\infty} \frac{du}{2\pi i} e^{i\mathbf{b}\cdot\mathbf{q}+u\tau} H(Q, \mu) J\left(\frac{u}{Q^2}, \mu\right) S_{\text{thr}}\left(\frac{u}{Q}, \mu\right) \\ &\times \mathcal{C}\left(\mathbf{b}, \frac{u}{Q}, \mu, \nu\right) D_{j\rightarrow h}\left(z_h, \mathbf{b}, \mu, \frac{\nu}{Q}\right) \left[1 + \mathcal{O}\left(\frac{q_T^2}{\tau Q^2}, \frac{\tau^2 Q^2}{q_T^2}\right)\right], \end{aligned} \quad (2.21)$$

where the collinear-soft function \mathcal{C} is the only new ingredient compared to eqs. (2.9) and (2.17). Although the arguments of \mathcal{C} are the same as the soft function S in eq. (2.9), its expression differs because the radiation is going into only one hemisphere. Eq. (2.21) contains the *unsubtracted* TMD FF $D_{j\rightarrow h}$ and can thus be used for constraining it.

As before, the large logarithms in q_T/Q and τ are resummed by evaluating the ingredients in eq. (2.9) at their natural scales and evolving them to a common scale. In this case the natural scales are

$$\mu_H \sim \nu_D \sim Q, \quad \mu_J \sim \sqrt{\tau}Q, \quad \nu_C \sim 1/(b_T^2 \tau Q), \quad \mu_D \sim \mu_C \sim 1/b_T, \quad \mu_{S_{\text{thr}}} \sim \tau Q. \quad (2.22)$$

The one-loop expressions and anomalous dimensions for the ingredients entering in eq. (2.21) are collected in section 3.

2.5 Matching regions

We conclude this section by discussing how to match predictions from the various kinematic regions, described in eqs. (2.9), (2.21) and (2.17). First we note that consistency implies that in region 2 (the most hierarchical case) the factorization theorems for region 1 and 3 must agree with that of region 2. This implies

$$\begin{aligned} S\left(\mathbf{b}, \frac{u}{Q}, \mu, \nu\right) &= S_{\text{thr}}\left(\frac{u}{Q}, \mu\right) \mathcal{C}\left(\mathbf{b}, \frac{u}{Q}, \mu, \nu\right) \left[1 + \mathcal{O}\left(\frac{b_T^2 Q^2}{u^2}\right)\right], \\ \mathcal{G}_{j\rightarrow h}\left(z_h, \mathbf{q}, \frac{u}{Q^2}, \mu\right) &= \int_{-\infty}^{\infty} \frac{d\mathbf{b}}{(2\pi)^2} e^{i\mathbf{b}\cdot\mathbf{q}} \mathcal{C}\left(\mathbf{b}, \frac{u}{Q}, \mu, \nu\right) D_{j\rightarrow h}\left(z_h, \mathbf{b}, \mu, \frac{\nu}{Q}\right) \\ &\times \left[1 + \mathcal{O}\left(\frac{q_T^2 u}{Q^2}\right)\right]. \end{aligned} \quad (2.23)$$

It is straightforward to verify this using the expressions in section 3.

While region 2 allows one to resum the most logarithms, since it treats τ and q_T/Q as uncorrelated, the power corrections in eq. (2.23) grow large as region 1 and 3 are approached. A practical scheme for implementing this was discussed in ref. [59] for the simultaneous measurement of beam thrust and the transverse momentum of the vector boson in Drell-Yan production. We postpone the full details used in our numerical implementation to ref. [52], but sketch the basic idea here. We start by illustrating the matching of region 1 and fixed-order QCD,

$$d\sigma = d\sigma_1|_{\mu_1} + [d\sigma_{\text{FO}} - d\sigma_1]_{\mu_{\text{FO}}}, \quad (2.24)$$

where we suppressed the denominator of the differential cross section for brevity. Here $|\mu_1$ indicates that the scales are chosen according to region 1, given in eq. (2.12). In region 1, the cross section is given by the expected result $d\sigma_1|_{\mu_1}$, since the fixed-order correction is power suppressed. In the fixed-order region, all the resummation is turned off $\mu_1 \rightarrow \mu_{\text{FO}}$ and $d\sigma_1|_{\mu_{\text{FO}}} + [d\sigma_{\text{FO}} - d\sigma_1]_{\mu_{\text{FO}}} = d\sigma_{\text{FO}}|_{\mu_{\text{FO}}}$, as required.

The generalization to the full case is

$$d\sigma = d\sigma_2|_{\mu_2} + [d\sigma_1 - d\sigma_2]_{\mu_1} + [d\sigma_3 - d\sigma_2]_{\mu_3} + [d\sigma_{\text{FO}} - d\sigma_1 - d\sigma_3 + d\sigma_2]_{\mu_{\text{FO}}}. \quad (2.25)$$

In region 2, where the most logarithms are resummed, this yields the expected result $d\sigma_2|_{\mu_2}$, as all other terms are power suppressed. As one approaches region 1, the additional resummation from region 2 is turned off by $\mu_2 \rightarrow \mu_1$ and the first two terms combine to yield $\sigma_2|_{\mu_1} + [\sigma_1 - \sigma_2]_{\mu_1} = \sigma_1|_{\mu_1}$, while the others encode power corrections. Finally, in the fixed-order region all resummation is turned off, $\mu_i \rightarrow \mu_{\text{FO}}$, and all terms cancel to leave $d\sigma_{\text{FO}}|_{\mu_{\text{FO}}}$. For scales chosen in terms of the impact parameter b_T it is nontrivial to design profiles [75] that smoothly ensure the correct transitions, e.g. $\mu_2 \rightarrow \mu_1$ as region 1 is approached, since the kinematic regions are not defined in terms of the conjugate variables. In ref. [59] this was accomplished through a hybrid scale setting.

3 Fixed-order ingredients

In this section we collect the one-loop expressions for the ingredients that enter in the factorization theorems in section 2, as well as their renormalization group equations. Specifically, we discuss the hard function in section 3.1, the invariant-mass jet function in section 3.2, the thrust soft function in section 3.3, the thrust-TMD double-differential soft function in section 3.4, the thrust-TMD collinear-soft function in section 3.5, the unsubtracted TMD FF in section 3.6 and the invariant mass-TMD double-differential fragmenting jet function in section 3.7. The anomalous dimensions needed for NNLL resummation are tabulated in appendix A. For convenience we introduce the short-hand notation

$$a_s = \frac{\alpha_s}{4\pi}. \quad (3.1)$$

3.1 Hard function

The hard function describes the short-distance $e^+e^- \rightarrow q\bar{q}$ process plus virtual corrections,⁴ and is thus independent of the kinematic region. Up to one-loop order it is given by [76, 77]

$$H(Q, \mu) = 1 + a_s \left[-2\Gamma_0 \ln^2 \left(\frac{\mu}{Q} \right) + \gamma_{H0} \ln \left(\frac{\mu}{Q} \right) + C_F \left(-16 + \frac{7\pi^2}{3} \right) \right], \quad (3.2)$$

and satisfies the following RGE:

$$\begin{aligned} \mu \frac{d}{d\mu} H(Q, \mu) &= \gamma_H(Q, \mu) H(Q, \mu), \\ \gamma_H(Q, \mu) &= -4\Gamma_{\text{cusp}}(a_s) \ln \left(\frac{\mu}{Q} \right) + \gamma_H(a_s). \end{aligned} \quad (3.3)$$

Here Γ_{cusp} is the (quark) cusp anomalous dimension [78] and γ_H is the non-cusp piece, whose perturbative coefficients Γ_n and γ_{Hn} are tabulated in appendix A.

3.2 Invariant-mass jet function

The invariant-mass jet function, that accounts for the contribution of the \bar{n} -collinear radiation to the thrust measurement in all kinematic regions, is up to one loop given by [79]

$$J \left(\frac{u}{Q^2}, \mu \right) = 1 + a_s \left[\frac{1}{2} \Gamma_0 L_J^2 + \frac{1}{2} \gamma_{J0} L_J + C_F \left(7 - \frac{2\pi^2}{3} \right) \right], \quad (3.4)$$

rewritten in terms of

$$L_J \equiv \ln \left(\frac{ue^{\gamma_E} \mu^2}{Q^2} \right). \quad (3.5)$$

By using the conjugate variable u , its RGE is multiplicative,

$$\begin{aligned} \mu \frac{d}{d\mu} J \left(\frac{u}{Q^2}, \mu \right) &= \gamma_J \left(\frac{u}{Q^2}, \mu \right) J \left(\frac{u}{Q^2}, \mu \right), \\ \gamma_J \left(\frac{u}{Q^2}, \mu \right) &= 2\Gamma_{\text{cusp}}(a_s) L_J + \gamma_J(a_s). \end{aligned} \quad (3.6)$$

The coefficients Γ_n and $\gamma_{J,n}$ of the anomalous dimension are given in appendix A.

3.3 Thrust soft function

The one-loop thrust soft function, which describes the contribution to thrust from soft radiation in region 2 and 3, is given by

$$S_{\text{thr}} \left(\frac{u}{Q}, \mu \right) = 1 + a_s [-2\Gamma_0 L_S^2 - C_F \pi^2], \quad (3.7)$$

up to one-loop order, where

$$L_S \equiv \ln \left(\frac{ue^{\gamma_E} \mu}{Q} \right). \quad (3.8)$$

⁴Real corrections to the hard function are not allowed, as they would lead to $q_T \sim Q$.

It's multiplicative RGE has anomalous dimension

$$\gamma_{S_{\text{thr}}}\left(\frac{u}{Q}, \mu\right) = -4\Gamma_{\text{cusp}}(a_s)L_S + \gamma_{S_{\text{thr}}}(a_s). \quad (3.9)$$

The non-cusp anomalous dimension satisfies $\gamma_{S_{\text{thr}}}(a_s) = -\gamma_H(a_s) - 2\gamma_J(a_s)$, due to consistency of the thrust factorization theorem.

3.4 Thrust-TMD soft function

The double-differential soft function S describes the effect of soft radiation in regime 1, accounting for both the contribution to the thrust and transverse momentum measurement. At one-loop order, only a single soft gluon is emitted, which goes either into the hemisphere that contains the identified hadron or the other hemisphere. It only affects the TMD measurement if it is emitted in the same hemisphere as the identified hadron, due to eq. (2.2). Consequently, at this order we can obtain S from two known soft functions,

$$S\left(\mathbf{b}, \frac{u}{Q}, \mu, \nu\right) = \frac{1}{2}S_{\text{thr}}\left(\frac{u}{Q}, \mu\right) + \frac{1}{2}S_{pp}\left(\mathbf{b}, \frac{u}{Q}, \mu, \nu\right) + \mathcal{O}(a_s^2), \quad (3.10)$$

where the thrust soft function S was given in section 3.3. The double-differential S_{pp} was calculated in ref. [50] and can be conveniently written in terms of the TMD soft function and a remainder,

$$S_{pp}\left(\mathbf{b}, \frac{u}{Q}, \mu, \nu\right) = S(\mathbf{b}, \mu, \nu) + \Delta S^{(1)}\left(\mathbf{b}, \frac{u}{Q}, \mu\right) + \mathcal{O}(a_s^2). \quad (3.11)$$

The TMD soft function is given by [69]

$$S(\mathbf{b}, \mu, \nu) = 1 + a_s \left\{ \Gamma_0 \left[-\frac{1}{2}L_b^2 - 2L_b \ln\left(\frac{\nu}{\mu}\right) \right] - C_F \frac{\pi^2}{3} \right\}, \quad (3.12)$$

in terms of

$$L_b \equiv 2 \ln\left(\frac{b_T \mu}{2e^{-\gamma_E}}\right). \quad (3.13)$$

For the remainder $\Delta S^{(1)}$ we use the following result in our numerical analysis [59]

$$\begin{aligned} \Delta S_c^{(1)}(\mathbf{b}, k_c, \mu) &= \int_0^{k_c} dk \frac{1}{2\pi i} \int_{\gamma-i\infty}^{\gamma+i\infty} du \exp\left(\frac{uk}{Q}\right) \Delta S^{(1)}\left(\mathbf{b}, \frac{u}{Q}, \mu\right) \\ &= 4a_s C_F \left[g(b_T k_c/2) - 2 \ln^2\left(\frac{b_T k_c e^{\gamma_E}}{2}\right) \right] \end{aligned} \quad (3.14)$$

which is the cumulative result for $k \leq k_c$, with

$$g(x) \equiv x^2 {}_3F_4(1, 1, 1; 2, 2, 2, 2; -x^2). \quad (3.15)$$

The double-differential soft function S satisfies the following RGE

$$\begin{aligned} \mu \frac{d}{d\mu} S\left(\mathbf{b}, \frac{u}{Q}, \mu, \nu\right) &= \gamma_S\left(\frac{u}{Q}, \mu, \nu\right) S\left(\mathbf{b}, \frac{u}{Q}, \mu, \nu\right), \\ \nu \frac{d}{d\nu} S\left(\mathbf{b}, \frac{u}{Q}, \mu, \nu\right) &= \frac{1}{2}\gamma_\nu(\mathbf{b}, \mu) S\left(\mathbf{b}, \frac{u}{Q}, \mu, \nu\right), \\ \gamma_S\left(\frac{u}{Q}, \mu, \nu\right) &= -2\Gamma_{\text{cusp}}(a_s) \left[L_S + \ln\left(\frac{\nu}{\mu}\right) \right] + \gamma_S(a_s), \\ \gamma_\nu(\mathbf{b}, \mu) &= -2\Gamma_{\text{cusp}}L_b + \gamma_\nu(a_s) \end{aligned} \quad (3.16)$$

where γ_ν is the universal rapidity anomalous dimension and L_S is defined in eq. (3.8). The non-cusp anomalous dimension γ_S vanishes up to two-loop order (for the exponential regulator [72] this is true to all orders).

3.5 Thrust-TMD collinear-soft function

The double differential collinear-soft function describes n -collinear radiation in kinematic region 2, encoding both the contribution to the TMD and thrust measurement. Up to one-loop order it is given by [50]

$$\mathcal{C}\left(\mathbf{b}, \frac{u}{Q}, \mu, \nu\right) = 1 + a_s \left\{ \Gamma_0 \left[-\frac{1}{2} L_b^2 + L_b \left(L_S + \ln\left(\frac{\mu}{\nu}\right) \right) \right] - C_F \frac{\pi^2}{3} \right\}. \quad (3.17)$$

It satisfies the following RGE in μ and ν

$$\begin{aligned} \mu \frac{d}{d\mu} \mathcal{C}\left(\mathbf{b}, \frac{u}{Q}, \mu, \nu\right) &= \gamma_{\mathcal{C}}\left(\frac{u}{Q}, \mu, \nu\right) \mathcal{C}\left(\mathbf{b}, \frac{u}{Q}, \mu, \nu\right), \\ \nu \frac{d}{d\nu} \mathcal{C}\left(\mathbf{b}, \frac{u}{Q}, \mu, \nu\right) &= \frac{1}{2} \gamma_\nu(\mathbf{b}, \mu) \mathcal{C}\left(\mathbf{b}, \frac{u}{Q}, \mu, \nu\right), \\ \gamma_{\mathcal{C}}\left(\frac{u}{Q}, \mu, \nu\right) &= 2\Gamma_{\text{cusp}}(a_s) \left[L_S + \ln\left(\frac{\mu}{\nu}\right) \right] + \gamma_{\mathcal{C}}(a_s), \end{aligned} \quad (3.18)$$

where γ_ν is the rapidity anomalous dimension in eq. (3.16) and the perturbative expansion of $\gamma_{\mathcal{C}}$ is given in appendix A.

3.6 Unsubtracted TMD fragmentation function

The unsubtracted TMD FFs $D_{i/h}(z, \mathbf{b}, \mu, \nu/Q)$ were introduced in SCET in refs. [80, 81]. In the perturbative regime, they can be matched onto collinear FFs [80–83]

$$D_{q \rightarrow h}\left(z, \mathbf{b}, \mu, \frac{\nu}{Q}\right) = \int_z^1 \frac{dx}{x} \mathcal{J}_{q \rightarrow j}\left(x, \mathbf{q}, \mu, \frac{\nu}{Q}\right) D_{j \rightarrow h}\left(\frac{z}{x}, \mu\right) \left[1 + \mathcal{O}(\Lambda_{\text{QCD}}^2 b_T^2) \right] \quad (3.19)$$

The renormalized matching coefficients are given by [81]

$$\begin{aligned} \mathcal{J}_{q \rightarrow j}\left(x, \mathbf{b}, \mu, \frac{\nu}{Q}\right) &= \delta_{qj} \delta(1-x) \\ &+ a_s \left\{ \left[\delta_{qj} \left(\Gamma_0 \ln\left(\frac{\nu}{Q}\right) + \frac{1}{2} \gamma_{D,0} \right) \delta(1-x) - 2C_F P_{jq}(x) \right] L_b + c_{qj}(x) \right\}, \end{aligned} \quad (3.20)$$

up to one-loop order, where the splitting functions P_{jq} and finite terms are given by

$$\begin{aligned} P_{qq}(x) &= \left(\frac{1+x^2}{1-x} \right)_+, & P_{gq}(x) &= \frac{1+(1-x)^2}{x}, \\ c_{qq}(x) &= 2C_F(1-x), & c_{qg}(x) &= 2C_F x. \end{aligned} \quad (3.21)$$

The corresponding μ and ν renormalization group equations are

$$\begin{aligned} \mu \frac{d}{d\mu} D\left(z, \mathbf{b}, \mu, \frac{\nu}{Q}\right) &= \gamma_D\left(\mu, \frac{\nu}{Q}\right) D\left(z, \mathbf{b}, \mu, \frac{\nu}{Q}\right), \\ \nu \frac{d}{d\nu} D\left(z, \mathbf{b}, \mu, \frac{\nu}{Q}\right) &= -\frac{1}{2} \gamma_\nu(\mathbf{b}, \mu) D\left(z, \mathbf{b}, \mu, \frac{\nu}{Q}\right), \\ \gamma_D\left(\mu, \frac{\nu}{Q}\right) &= 2\Gamma_{\text{cusp}}(a_s) \ln\left(\frac{\nu}{Q}\right) + \gamma_D(a_s). \end{aligned} \quad (3.22)$$

3.7 Invariant mass-TMD fragmenting jet function

The fragmenting jet function encodes the effects of n -collinear radiation in region 3, contributing to both the thrust and TMD measurement. In the perturbative regime this can be matched onto collinear fragmentation functions (similar to the matching for TMD FFs in eq. (3.19))

$$\mathcal{G}_{q \rightarrow h}\left(z, \mathbf{q}, \frac{u}{Q^2}, \mu\right) = \int_z^1 \frac{dx}{x} \mathcal{J}_{q \rightarrow j}\left(x, \mathbf{q}, \frac{u}{Q^2}, \mu\right) D_{j \rightarrow h}\left(\frac{z}{x}, \mu\right). \quad (3.23)$$

Up to one-loop order, the matching coefficients are given by [38]

$$\begin{aligned} \mathcal{J}_{q \rightarrow j}\left(x, \mathbf{q}, \frac{u}{Q^2}, \mu\right) &= \delta_{qj} \delta^{(2)}(\mathbf{q}) \delta(1-x) + a_s \left\{ \delta_{qj} \left[\frac{1}{2} \Gamma_0 L_J^2 + \frac{1}{2} \gamma_{J0} L_J \right] \delta^{(2)}(\mathbf{q}) \delta(1-x) \right. \\ &\quad + \frac{2C_F}{\pi} \frac{1}{(1-x)\mu^2} \left(\frac{(1-x)\mu^2}{q_T^2} \right)_+ \exp\left(-\frac{x}{1-x} \frac{u q_T^2}{Q^2}\right) P_{jq}(x) \\ &\quad \left. + [4C_F P_{jq}(x) \ln x + d_{qj}(x)] \delta^{(2)}(\mathbf{q}) \right\}, \end{aligned} \quad (3.24)$$

where the splitting functions are given in eq. (3.21) and

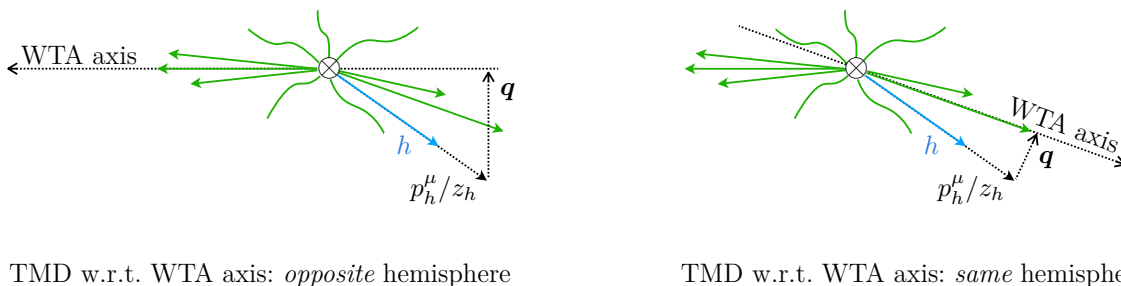
$$d_{qq}(x) = 2C_F \left[(1+x^2) \left(\frac{\ln(1-x)}{1-x} \right)_+ + 1-x \right], \quad d_{qg}(x) = 2C_F [P_{gq}(x) \ln(1-x) + x]. \quad (3.25)$$

The corresponding anomalous dimension is equal to the jet function anomalous dimension γ_J in eq. (3.6), as required by consistency of the factorization theorem.

4 Alternative methods to extract TMD FFs

While the main focus of this paper has been the extraction of TMD FFs from the transverse momenta of hadrons with respect to the thrust axis, we now comment on some different measurements that can be used to extract the TMD FFs.

First of all, one can consider the transverse momentum of a hadron with respect to the jet axis in pp collisions [81, 83], which also provides access to fragmentation initiated by gluons. To avoid jet boundary effects that may distort the transverse momentum distribution, $q_T \ll p_T R$ is required, where p_T is the jet transverse momentum and R the


 TMD w.r.t. WTA axis: *opposite* hemisphere

 TMD w.r.t. WTA axis: *same* hemisphere

Figure 3. The transverse momentum of an identified hadron with respect to the WTA axis in the opposite hemisphere (left) or same hemisphere (right).

radius of the jet. Because the jet axis points along the jet momentum, the sum of momenta transverse to the *jet axis* is zero. Consequently, soft radiation inside the jet affects the transverse momentum measurement through its recoil of the jet axis, while soft radiation outside the jet is unconstrained. This leads to non-global logarithms that currently limit the theoretical accuracy to NLL.

Alternatively, one can consider the transverse momentum of a hadron in a jet with respect to a recoil-free axis [55], such as the Winner-Take-All (WTA) axis [53, 54]. This is illustrated in the right panel of figure 3. This removes all sensitivity to soft radiation, but the resulting transverse momentum distributions are not the standard TMD FFs. Indeed, rather than Sudakov double logarithms of the transverse momentum, the corresponding cross section involves single logarithms that are resummed by a modified DGLAP evolution [55, 56].

Within the context of e^+e^- collisions, there is another interesting alternative: one can determine the WTA axis in one hemisphere and consider the transverse momentum of a hadron in the *other* hemisphere with respect to this axis, shown in the left panel of figure 3.⁵ The resulting cross section has several advantages: there is no additional cut on thrust needed to ensure the two-jet limit, as this is already taken care of by requiring that the transverse momentum $q_T \ll Q$. There are no NGLs because soft radiation is treated the same, independent of the hemisphere it is emitted into, with only its total recoil affecting q_T . The corresponding cross section is given by

$$\frac{d\sigma_{\text{WTA}}}{dz_h d\mathbf{q}} = \sigma_0 \int_{-\infty}^{\infty} \frac{d\mathbf{b}}{(2\pi)^2} e^{i\mathbf{b}\cdot\mathbf{q}} H(Q, \mu) \mathcal{J} \left(\mathbf{b}, \mu, \frac{\nu}{Q} \right) S(\mathbf{b}, \mu, \nu) \sum_j D_{1,j \rightarrow h} \left(z_h, \mathbf{b}, \mu, \frac{\nu}{Q} \right) \times \left[1 + \mathcal{O} \left(\frac{q_T^2}{Q^2} \right) \right], \quad (4.1)$$

where the jet function \mathcal{J} encodes the offset of the winner-take-all axis and the collinear quark that initiates the jet [24, 26]. Note that this is identical to the factorization formulae for dihadron fragmentation, with one of the TMD FFs replaced by a TMD jet function. The observable proposed here describes the transverse momentum of a hadron with respect

⁵One can either identify the hemispheres using e.g. exclusive k_T or taking the hemisphere defined by the thrust axis. The difference between these choices is power suppressed for small transverse momenta.

to a jet in the opposite direction, whose axis is found using the WTA scheme. It provides a unique crosscheck between dihadron hh and dijet JJ production (both with WTA axis) in e^+e^- collisions. Interestingly, this same TMD jet function also appears in studies of the TMD PDF in SIDIS using jets [24, 26], and the azimuthal angular decorrelation in vector boson plus jet production in pp collisions [84].

5 Extracting TMD PDFs in DIS using the thrust axis

In this paper we focused on the formalism for describing the double differential spectrum of \mathbf{q} and τ in electron-positron collisions, motivated by its recent measurement by the Belle collaboration. However, our formalism can also be extended to deep-inelastic-scattering (DIS), offering a unique approach to extract TMD PDFs, as we now discuss.

Consider DIS in the Breit frame, for which the virtual photon momentum is given by:

$$q^\mu = Q/2(\bar{n}^\mu - n^\mu) = Q(0, 0, 0, -1), \quad (5.1)$$

where $n^\mu \equiv (1, 0, 0, 1)$ and $\bar{n}^\mu \equiv (1, 0, 0, -1)$. Up to mass corrections, the proton momentum can be written as

$$P^\mu \simeq Q/(2x)n^\mu = Q/(2x)(1, 0, 0, 1), \quad (5.2)$$

where $x \equiv Q^2/(2q \cdot P)$ is the Bjorken variable. At Born level, the struck quark back-scatters against the photon with momentum ($x \simeq \xi$)

$$p_q^\mu = \xi P^\mu + q^\mu \simeq (Q/2)\bar{n}^\mu. \quad (5.3)$$

The struck-quark fragments and produces a jet-like structure which points (close) to the opposite of the beam direction.

We propose the measurement of the photon transverse momentum \mathbf{q} in the Breit frame, with respect to the thrust axis \hat{t} , when a cut on the DIS-thrust event shape is imposed, $\tau_{\text{DIS}} < \tau_c$. The thrust axis and DIS event shape we use are defined by

$$\tau_{\text{DIS}} = \min_{\hat{t}} \frac{1}{Q} \sum_i \min\{n \cdot p_i, n_t \cdot p_i\}, \quad (5.4)$$

where $n_t^\mu \equiv (1, \hat{t})$ is determined through minimization. Up to proton mass corrections, this definition is closely related to the 1-jettiness for DIS of ref. [85] and τ_1^a of ref. [86]. In principle one can use a Lorentz invariant definition, as in ref. [86], but we find it convenient to give the simpler definition for the Breit frame. For alternative definitions of DIS-thrust see also refs. [87–89]. To keep the notation compact, we drop the subscript DIS in the following, simply using τ .

This measurement is related to the transverse momentum of a hadron in e^+e^- collisions by crossing the outgoing hadron to an incoming proton, thereby replacing a TMD FF by a TMD PDF. In particular, the kinematic regions and modes discussed in section 2 are the

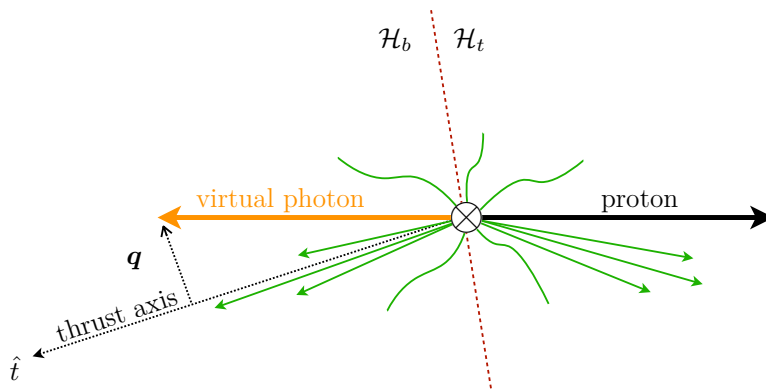


Figure 4. Illustration of the measurement of the virtual photon transverse momentum w.r.t. the thrust axis, \mathbf{q} , in the Breit frame.

same. We now discuss the factorization using figure 4, where we have separated the phase space into the hemispheres \mathcal{H}_b and \mathcal{H}_t , defined by

$$\begin{aligned} i \in \mathcal{H}_b : & \quad n \cdot p_i > n_t \cdot p_i, \\ i \in \mathcal{H}_t : & \quad n \cdot p_i < n_t \cdot p_i, \end{aligned} \tag{5.5}$$

where p_i^μ is the (massless) momentum of particle i .

In Region 1, which as before satisfies $\tau \sim |\mathbf{q}|/Q \ll \sqrt{\tau}$, soft radiation contributes to both the thrust measurement and the TMD measurement. Initial-state collinear radiation along the direction of the proton will contribute to \mathcal{H}_b with momentum $p_{c,b}^\mu$, and final-state collinear radiation from the struck quark will contribute to \mathcal{H}_t , with momentum $p_{c,t}^\mu$. Soft radiation will be emitted in both hemispheres, and we denote the momentum of its contribution to \mathcal{H}_b and \mathcal{H}_t with $p_{s,b}^\mu$ and $p_{s,t}^\mu$, respectively. The transverse momentum \mathbf{q} of the photon with respect to the thrust axis, is directly related to the total transverse momentum \mathbf{p}_t of radiation in hemisphere \mathcal{H}_t w.r.t. proton/photon axis, through $\mathbf{q} = -2\mathbf{p}_t$. By momentum conservation $\mathbf{p}_t = -(\mathbf{p}_{c,b} + \mathbf{p}_{s,b})$, showing explicitly that for the transverse momentum measurement only contributions from the initial-state collinear radiation and soft radiation in \mathcal{H}_b are relevant. On the other hand, the thrust measurement receives contributions from the final-state collinear radiation and soft radiation from both hemispheres. The kinematics and momentum conservation from contribution of the various modes is illustrated in figure 5. This leads to the following factorization theorem,

$$\begin{aligned} \frac{d\sigma_1}{dx dQ^2 d\mathbf{p}_t d\tau} &= \sum_j \sigma_{0,j}(x, Q) \int_{-\infty}^{\infty} \frac{d\mathbf{b}}{(2\pi)^2} \int_{\gamma-i\infty}^{\gamma+i\infty} \frac{du}{2\pi i} e^{i\mathbf{b} \cdot \mathbf{p}_t + u\tau} H(Q, \mu) J\left(\frac{u}{Q^2}, \mu\right) \\ &\quad \times S\left(\mathbf{b}, \frac{u}{Q}, \mu, \nu\right) F_{1,j}\left(x, \mathbf{b}, \mu, \frac{\nu}{Q}\right) \left[1 + \mathcal{O}\left(\tau, \frac{q_T^2}{\tau Q^2}\right)\right], \end{aligned} \tag{5.6}$$

where $F_{1,j}$ is the unsubtracted unpolarized quark TMD PDF. We leave the effect of polarized incoming protons for future investigations. The soft function S , and in general the global soft functions that appear in this section, are related to the corresponding matrix

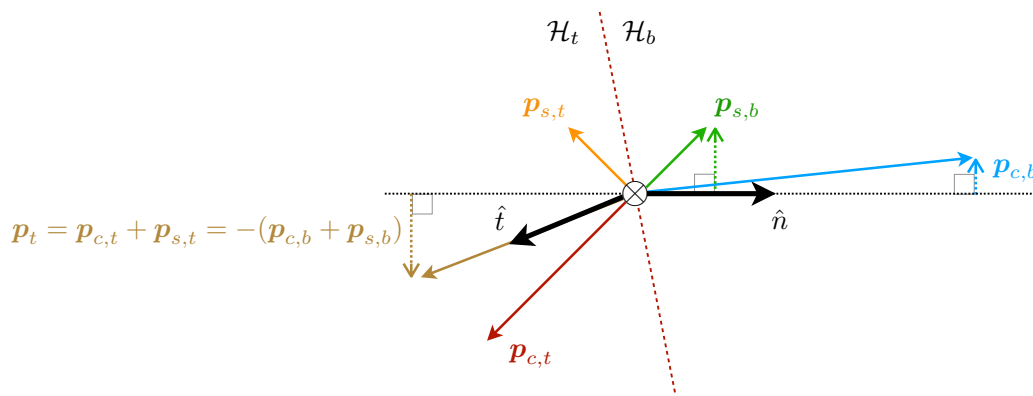


Figure 5. Momentum conservation in region 1.

elements in the e^+e^- factorization by exchanging an outgoing Wilson line for an incoming one. For compactness of the notation, we avoid the use of new symbols or superscripts.

To obtain the factorization for the other kinematic regions involves the same steps. In region 2, the collinear-soft initial-state radiation also contributes to \mathbf{p}_t while the soft contribution is power suppressed: $\mathbf{p}_t = -(\mathbf{p}_{c,b} + \mathbf{p}_{cs,b})$. The corresponding factorization theorem is

$$\begin{aligned} \frac{d\sigma_2}{dx dQ^2 d\mathbf{p}_t d\tau} &= \sum_j \sigma_{0,j}(x, Q) \int_{-\infty}^{\infty} \frac{d\mathbf{b}}{(2\pi)^2} \int_{\gamma-i\infty}^{\gamma+i\infty} \frac{du}{2\pi i} e^{i\mathbf{b}\cdot\mathbf{p}_t + u\tau} H(Q, \mu) J\left(\frac{u}{Q^2}, \mu\right) S_{\text{thr}}\left(\frac{u}{Q}, \mu\right) \\ &\quad \times \mathcal{C}\left(\mathbf{b}, \frac{u}{Q}, \mu, \nu\right) F_{1,j}\left(x, \mathbf{b}, \mu, \frac{\nu}{Q}\right) \left[1 + \mathcal{O}\left(\frac{q_T^2}{\tau Q^2}, \frac{\tau^2 Q^2}{q_T^2}\right)\right]. \end{aligned} \quad (5.7)$$

Finally, for region 3 the power counting in eq. (2.16) implies $\mathbf{p}_t = -\mathbf{p}_{c,b}$. The corresponding factorization theorem is,

$$\begin{aligned} \frac{d\sigma_3}{dx dQ^2 d\mathbf{p}_t d\tau} &= \sum_j \sigma_{0,j}(x, Q) \int_{\gamma-i\infty}^{\gamma+i\infty} \frac{du}{2\pi i} e^{u\tau} H(Q, \mu) J\left(\frac{u}{Q^2}, \mu\right) S_{\text{thr}}\left(\frac{u}{Q}, \mu\right) \mathcal{B}_j\left(\frac{u}{Q^2}, x, \mathbf{p}_t, \mu\right) \\ &\quad \times \left[1 + \mathcal{O}\left(\tau, \frac{q_T^2}{Q^2}, \frac{\tau^2 Q^2}{q_T^2}\right)\right]. \end{aligned} \quad (5.8)$$

where \mathcal{B}_j is the Laplace transform of the double differential (in thrust and transverse momentum) beam function [38, 90].

6 Conclusions

We have presented a factorization framework for the transverse momentum of hadrons measured in e^+e^- collisions relative to the thrust axis. We identified three kinematic regions depending on the relative scaling of the transverse momentum of the hadrons and the thrust event shape. One of these kinematic regions was studied before in [38], but is not relevant for extracting TMD FFs, since they do not appear in the corresponding factorization theorem. For each of these regions, we developed the necessary factorization

formulas using Soft Collinear Effective Theory. We presented analytical results for the different functions that appear in the factorization, which allow for the joint resummation of logarithms of the transverse momentum and thrust at next-to-next-to-leading logarithmic accuracy. Our studies were motivated by recent measurements of the Belle Collaboration differential in the transverse momentum of hadrons and cumulative in thrust. We will present numerical studies for this process and a detailed comparison to the experimental data in ref. [52]. Using this new data set it will be possible to (more) precisely constrain transverse momentum dependent fragmentation functions (TMD FFs).

In addition, we proposed to constrain TMD FFs by identifying the winner-take-all axis in e^+e^- collisions in one hemisphere and measuring the transverse momentum of hadrons in the opposite hemisphere with respect to this axis. This process is simpler than the double differential cross section described above, which is the main focus of this work, and it is free of non-global logarithms. Furthermore, we proposed to measure the transverse momentum of the virtual photon in deep-inelastic scattering with respect to the thrust axis in the Breit frame. This process can be thought of as a crossed version of the double differential e^+e^- cross section described above. This DIS measurement opens up a new avenue to access transverse momentum dependent parton distribution functions (TMD PDFs), which is independent of TMD FFs and jet clustering effects. We presented the relevant factorization formulas and we expect that this measurement will be a powerful probe of TMD PDFs, especially at the future Electron-Ion Collider.

Acknowledgments

We thank Johannes Michel, Ralf Seidl and Anselm Vossen for discussions, Johannes Michel and Zhong-Bo Kang for feedback on the manuscript, and Zhong-Bo Kang for collaborating in early stages of this project. YM is supported by the European Union's Horizon 2020 research and innovation program under the Marie Skłodowska-Curie grant agreement No. 754496-FELLINI. FR is supported by LDRD funding from Berkeley Lab provided by the U.S. Department of Energy under Contract No. DE-AC02-05CH11231. WW is supported by the ERC grant ERC-STG-2015-67732 and the D-ITP consortium, a program of NWO funded by the Dutch Ministry of Education, Culture and Science (OCW).

A Anomalous dimensions

Expanding the anomalous dimensions in powers of $a_s = \alpha_s/(4\pi)$,

$$\Gamma_{\text{cusp}}(a_s) = \sum_{n=0}^{\infty} \Gamma_n a_s^{n+1}, \quad \gamma_X(a_s) = \sum_{n=0}^{\infty} \gamma_{X,n} a_s^{n+1}, \quad (\text{A.1})$$

the coefficients that are needed up to NNLL order are given by

$$\begin{aligned} \Gamma_0 &= 4C_F, \\ \Gamma_1 &= 4C_F \left[C_A \left(\frac{67}{9} - \frac{\pi^2}{3} \right) - \frac{20}{9} T_F n_f \right], \\ \Gamma_2 &= 4C_F \left[C_A^2 \left(\frac{245}{6} - \frac{134\pi^2}{27} + \frac{11\pi^4}{45} + \frac{22\zeta_3}{3} \right) + C_A T_F n_f \left(-\frac{418}{27} + \frac{40\pi^2}{27} - \frac{56\zeta_3}{3} \right) \right. \\ &\quad \left. + C_F T_F n_f \left(-\frac{55}{3} + 16\zeta_3 \right) - \frac{16}{27} T_F^2 n_f^2 \right], \end{aligned} \quad (\text{A.2})$$

$$\begin{aligned} \gamma_{H0} &= -12C_F, \\ \gamma_{H1} &= C_F \left[C_A \left(-\frac{164}{9} + 104\zeta_3 \right) + C_F(-6 + 8\pi^2 - 96\zeta_3) + \beta_0 \left(-\frac{130}{9} - 2\pi^2 \right) \right], \end{aligned} \quad (\text{A.3})$$

$$\begin{aligned} \gamma_{J0} &= 6C_F, \\ \gamma_{J1} &= C_F \left[C_A \left(\frac{146}{9} - 80\zeta_3 \right) + C_F(3 - 4\pi^2 + 48\zeta_3) + \beta_0 \left(\frac{121}{9} + \frac{2\pi^2}{3} \right) \right], \end{aligned} \quad (\text{A.4})$$

$$\begin{aligned} \gamma_{S_{\text{thr}0}} &= 0, \\ \gamma_{S_{\text{thr}1}} &= C_F \left[C_A \left(-\frac{128}{9} + 56\zeta_3 \right) + \beta_0 \left(-\frac{112}{9} + \frac{2\pi^2}{3} \right) \right], \end{aligned} \quad (\text{A.5})$$

$$\begin{aligned} \gamma_{S0} &= 0, \\ \gamma_{S1} &= 0, \end{aligned} \quad (\text{A.6})$$

$$\begin{aligned} \gamma_{C0} &= 0, \\ \gamma_{C1} &= C_F \left[C_A \left(\frac{128}{9} - 56\zeta_3 \right) + \beta_0 \left(\frac{112}{9} - \frac{2\pi^2}{3} \right) \right], \end{aligned} \quad (\text{A.7})$$

$$\begin{aligned} \gamma_{D0} &= 6C_F, \\ \gamma_{D1} &= C_F \left[C_A(2 - 24\zeta_3) + C_F(3 - 4\pi^2 + 48\zeta_3) + \beta_0 \left(1 + \frac{4\pi^2}{3} \right) \right]. \end{aligned} \quad (\text{A.8})$$

Open Access. This article is distributed under the terms of the Creative Commons Attribution License ([CC-BY 4.0](https://creativecommons.org/licenses/by/4.0/)), which permits any use, distribution and reproduction in any medium, provided the original author(s) and source are credited.

References

- [1] H. Georgi and H.D. Politzer, *Quark Decay Functions and Heavy Hadron Production in QCD*, *Nucl. Phys. B* **136** (1978) 445 [[INSPIRE](#)].
- [2] R.K. Ellis, H. Georgi, M. Machacek, H.D. Politzer and G.G. Ross, *Perturbation Theory and the Parton Model in QCD*, *Nucl. Phys. B* **152** (1979) 285 [[INSPIRE](#)].
- [3] G. Curci, W. Furmanski and R. Petronzio, *Evolution of Parton Densities Beyond Leading Order: The Nonsinglet Case*, *Nucl. Phys. B* **175** (1980) 27 [[INSPIRE](#)].
- [4] J.C. Collins and D.E. Soper, *Parton Distribution and Decay Functions*, *Nucl. Phys. B* **194** (1982) 445 [[INSPIRE](#)].
- [5] J.C. Collins, *Fragmentation of transversely polarized quarks probed in transverse momentum distributions*, *Nucl. Phys. B* **396** (1993) 161 [[hep-ph/9208213](#)] [[INSPIRE](#)].
- [6] P.J. Mulders and R.D. Tangerman, *The Complete tree level result up to order $1/Q$ for polarized deep inelastic lepton production*, *Nucl. Phys. B* **461** (1996) 197 [Erratum *ibid.* **484** (1997) 538] [[hep-ph/9510301](#)] [[INSPIRE](#)].
- [7] D. Boer and P.J. Mulders, *Time reversal odd distribution functions in lepton production*, *Phys. Rev. D* **57** (1998) 5780 [[hep-ph/9711485](#)] [[INSPIRE](#)].
- [8] D. Boer, R. Jakob and P.J. Mulders, *Leading asymmetries in two hadron production in e^+e^- annihilation at the Z pole*, *Phys. Lett. B* **424** (1998) 143 [[hep-ph/9711488](#)] [[INSPIRE](#)].
- [9] X.-d. Ji, J.-p. Ma and F. Yuan, *QCD factorization for semi-inclusive deep-inelastic scattering at low transverse momentum*, *Phys. Rev. D* **71** (2005) 034005 [[hep-ph/0404183](#)] [[INSPIRE](#)].
- [10] J. Collins, *Foundations of perturbative QCD*, vol. 32, Cambridge University Press (2013) [[INSPIRE](#)].
- [11] A. Metz and A. Vossen, *Parton Fragmentation Functions*, *Prog. Part. Nucl. Phys.* **91** (2016) 136 [[arXiv:1607.02521](#)] [[INSPIRE](#)].
- [12] M. Anselmino, A. Mukherjee and A. Vossen, *Transverse spin effects in hard semi-inclusive collisions*, *Prog. Part. Nucl. Phys.* **114** (2020) 103806 [[arXiv:2001.05415](#)] [[INSPIRE](#)].
- [13] P. Sun and F. Yuan, *Transverse momentum dependent evolution: Matching semi-inclusive deep inelastic scattering processes to Drell-Yan and W/Z boson production*, *Phys. Rev. D* **88** (2013) 114012 [[arXiv:1308.5003](#)] [[INSPIRE](#)].
- [14] A. Bacchetta, F. Delcarro, C. Pisano, M. Radici and A. Signori, *Extraction of partonic transverse momentum distributions from semi-inclusive deep-inelastic scattering, Drell-Yan and Z-boson production*, *JHEP* **06** (2017) 081 [Erratum *ibid.* **06** (2019) 051] [[arXiv:1703.10157](#)] [[INSPIRE](#)].
- [15] I. Scimemi and A. Vladimirov, *Non-perturbative structure of semi-inclusive deep-inelastic and Drell-Yan scattering at small transverse momentum*, *JHEP* **06** (2020) 137 [[arXiv:1912.06532](#)] [[INSPIRE](#)].

- [16] V. Bertone, I. Scimemi and A. Vladimirov, *Extraction of unpolarized quark transverse momentum dependent parton distributions from Drell-Yan/Z-boson production*, *JHEP* **06** (2019) 028 [[arXiv:1902.08474](#)] [[INSPIRE](#)].
- [17] A. Bacchetta et al., *Transverse-momentum-dependent parton distributions up to N^3LL from Drell-Yan data*, *JHEP* **07** (2020) 117 [[arXiv:1912.07550](#)] [[INSPIRE](#)].
- [18] M.G. Echevarria, A. Idilbi, Z.-B. Kang and I. Vitev, *QCD Evolution of the Sivers Asymmetry*, *Phys. Rev. D* **89** (2014) 074013 [[arXiv:1401.5078](#)] [[INSPIRE](#)].
- [19] M. Anselmino et al., *Collins functions for pions from SIDIS and new e^+e^- data: a first glance at their transverse momentum dependence*, *Phys. Rev. D* **92** (2015) 114023 [[arXiv:1510.05389](#)] [[INSPIRE](#)].
- [20] Z.-B. Kang, A. Prokudin, P. Sun and F. Yuan, *Extraction of Quark Transversity Distribution and Collins Fragmentation Functions with QCD Evolution*, *Phys. Rev. D* **93** (2016) 014009 [[arXiv:1505.05589](#)] [[INSPIRE](#)].
- [21] D. Callos, Z.-B. Kang and J. Terry, *Extracting the transverse momentum dependent polarizing fragmentation functions*, *Phys. Rev. D* **102** (2020) 096007 [[arXiv:2003.04828](#)] [[INSPIRE](#)].
- [22] JEFFERSON LAB ANGULAR MOMENTUM collaboration, *Origin of single transverse-spin asymmetries in high-energy collisions*, *Phys. Rev. D* **102** (2020) 054002 [[arXiv:2002.08384](#)] [[INSPIRE](#)].
- [23] A. Accardi et al., *Electron Ion Collider: The Next QCD Frontier: Understanding the glue that binds us all*, *Eur. Phys. J. A* **52** (2016) 268 [[arXiv:1212.1701](#)] [[INSPIRE](#)].
- [24] D. Gutierrez-Reyes, I. Scimemi, W.J. Waalewijn and L. Zoppi, *Transverse momentum dependent distributions with jets*, *Phys. Rev. Lett.* **121** (2018) 162001 [[arXiv:1807.07573](#)] [[INSPIRE](#)].
- [25] X. Liu, F. Ringer, W. Vogelsang and F. Yuan, *Lepton-jet Correlations in Deep Inelastic Scattering at the Electron-Ion Collider*, *Phys. Rev. Lett.* **122** (2019) 192003 [[arXiv:1812.08077](#)] [[INSPIRE](#)].
- [26] D. Gutierrez-Reyes, I. Scimemi, W.J. Waalewijn and L. Zoppi, *Transverse momentum dependent distributions in e^+e^- and semi-inclusive deep-inelastic scattering using jets*, *JHEP* **10** (2019) 031 [[arXiv:1904.04259](#)] [[INSPIRE](#)].
- [27] D. Gutierrez-Reyes, Y. Makris, V. Vaidya, I. Scimemi and L. Zoppi, *Probing Transverse-Momentum Distributions With Groomed Jets*, *JHEP* **08** (2019) 161 [[arXiv:1907.05896](#)] [[INSPIRE](#)].
- [28] M. Arratia, Z.-B. Kang, A. Prokudin and F. Ringer, *Jet-based measurements of Sivers and Collins asymmetries at the future electron-ion collider*, *Phys. Rev. D* **102** (2020) 074015 [[arXiv:2007.07281](#)] [[INSPIRE](#)].
- [29] BELLE collaboration, *Transverse momentum dependent production cross sections of charged pions, kaons and protons produced in inclusive e^+e^- annihilation at $\sqrt{s} = 10.58$ GeV*, *Phys. Rev. D* **99** (2019) 112006 [[arXiv:1902.01552](#)] [[INSPIRE](#)].
- [30] E. Farhi, *A QCD Test for Jets*, *Phys. Rev. Lett.* **39** (1977) 1587 [[INSPIRE](#)].
- [31] F. Landry, R. Brock, G. Ladinsky and C.P. Yuan, *New fits for the nonperturbative parameters in the CSS resummation formalism*, *Phys. Rev. D* **63** (2001) 013004 [[hep-ph/9905391](#)] [[INSPIRE](#)].

- [32] F. Landry, R. Brock, P.M. Nadolsky and C.P. Yuan, *Tevatron Run-1 Z boson data and Collins-Soper-Sterman resummation formalism*, *Phys. Rev. D* **67** (2003) 073016 [[hep-ph/0212159](#)] [[INSPIRE](#)].
- [33] A.V. Konychev and P.M. Nadolsky, *Universality of the Collins-Soper-Sterman nonperturbative function in gauge boson production*, *Phys. Lett. B* **633** (2006) 710 [[hep-ph/0506225](#)] [[INSPIRE](#)].
- [34] U. D'Alesio, M.G. Echevarria, S. Melis and I. Scimemi, *Non-perturbative QCD effects in q_T spectra of Drell-Yan and Z-boson production*, *JHEP* **11** (2014) 098 [[arXiv:1407.3311](#)] [[INSPIRE](#)].
- [35] I. Scimemi and A. Vladimirov, *Analysis of vector boson production within TMD factorization*, *Eur. Phys. J. C* **78** (2018) 89 [[arXiv:1706.01473](#)] [[INSPIRE](#)].
- [36] M.A. Ebert, I.W. Stewart and Y. Zhao, *Determining the Nonperturbative Collins-Soper Kernel From Lattice QCD*, *Phys. Rev. D* **99** (2019) 034505 [[arXiv:1811.00026](#)] [[INSPIRE](#)].
- [37] P. Shanahan, M. Wagman and Y. Zhao, *Collins-Soper kernel for TMD evolution from lattice QCD*, *Phys. Rev. D* **102** (2020) 014511 [[arXiv:2003.06063](#)] [[INSPIRE](#)].
- [38] A. Jain, M. Procura and W.J. Waalewijn, *Fully-Unintegrated Parton Distribution and Fragmentation Functions at Perturbative k_T* , *JHEP* **04** (2012) 132 [[arXiv:1110.0839](#)] [[INSPIRE](#)].
- [39] M. Boglione, J.O. Gonzalez-Hernandez and R. Taghavi, *Transverse parton momenta in single inclusive hadron production in e^+e^- annihilation processes*, *Phys. Lett. B* **772** (2017) 78 [[arXiv:1704.08882](#)] [[INSPIRE](#)].
- [40] M. Soleymaninia and H. Khanpour, *Transverse momentum dependent of charged pion, kaon, and proton/antiproton fragmentation functions from e^+e^- annihilation process*, *Phys. Rev. D* **100** (2019) 094033 [[arXiv:1907.12294](#)] [[INSPIRE](#)].
- [41] M. Boglione and A. Simonelli, *Universality-breaking effects in e^+e^- hadronic production processes*, *Eur. Phys. J. C* **81** (2021) 96 [[arXiv:2007.13674](#)] [[INSPIRE](#)].
- [42] Z.-B. Kang, D.Y. Shao and F. Zhao, *QCD resummation on single hadron transverse momentum distribution with the thrust axis*, *JHEP* **12** (2020) 127 [[arXiv:2007.14425](#)] [[INSPIRE](#)].
- [43] M. Dasgupta and G.P. Salam, *Resummation of nonglobal QCD observables*, *Phys. Lett. B* **512** (2001) 323 [[hep-ph/0104277](#)] [[INSPIRE](#)].
- [44] C.W. Bauer, S. Fleming and M.E. Luke, *Summing Sudakov logarithms in $B \rightarrow X_s \gamma$ in effective field theory*, *Phys. Rev. D* **63** (2000) 014006 [[hep-ph/0005275](#)] [[INSPIRE](#)].
- [45] C.W. Bauer, S. Fleming, D. Pirjol and I.W. Stewart, *An Effective field theory for collinear and soft gluons: Heavy to light decays*, *Phys. Rev. D* **63** (2001) 114020 [[hep-ph/0011336](#)] [[INSPIRE](#)].
- [46] C.W. Bauer, D. Pirjol and I.W. Stewart, *Soft collinear factorization in effective field theory*, *Phys. Rev. D* **65** (2002) 054022 [[hep-ph/0109045](#)] [[INSPIRE](#)].
- [47] C.W. Bauer, S. Fleming, D. Pirjol, I.Z. Rothstein and I.W. Stewart, *Hard scattering factorization from effective field theory*, *Phys. Rev. D* **66** (2002) 014017 [[hep-ph/0202088](#)] [[INSPIRE](#)].

- [48] M. Beneke, A.P. Chapovsky, M. Diehl and T. Feldmann, *Soft collinear effective theory and heavy to light currents beyond leading power*, *Nucl. Phys. B* **643** (2002) 431 [[hep-ph/0206152](#)] [[INSPIRE](#)].
- [49] C.W. Bauer, F.J. Tackmann, J.R. Walsh and S. Zuberi, *Factorization and Resummation for Dijet Invariant Mass Spectra*, *Phys. Rev. D* **85** (2012) 074006 [[arXiv:1106.6047](#)] [[INSPIRE](#)].
- [50] M. Procura, W.J. Waalewijn and L. Zeune, *Resummation of Double-Differential Cross Sections and Fully-Unintegrated Parton Distribution Functions*, *JHEP* **02** (2015) 117 [[arXiv:1410.6483](#)] [[INSPIRE](#)].
- [51] A.J. Larkoski, I. Moult and D. Neill, *Non-Global Logarithms, Factorization, and the Soft Substructure of Jets*, *JHEP* **09** (2015) 143 [[arXiv:1501.04596](#)] [[INSPIRE](#)].
- [52] Y. Makris, J.K. Michel, F. Ringer and W.J. Waalewijn, in preparation.
- [53] G. Salam, E_t^∞ Scheme, Unpublished.
- [54] D. Bertolini, T. Chan and J. Thaler, *Jet Observables Without Jet Algorithms*, *JHEP* **04** (2014) 013 [[arXiv:1310.7584](#)] [[INSPIRE](#)].
- [55] D. Neill, I. Scimemi and W.J. Waalewijn, *Jet axes and universal transverse-momentum-dependent fragmentation*, *JHEP* **04** (2017) 020 [[arXiv:1612.04817](#)] [[INSPIRE](#)].
- [56] D. Neill, A. Papaefstathiou, W.J. Waalewijn and L. Zoppi, *Phenomenology with a recoil-free jet axis: TMD fragmentation and the jet shape*, *JHEP* **01** (2019) 067 [[arXiv:1810.12915](#)] [[INSPIRE](#)].
- [57] J.C. Collins, D.E. Soper and G.F. Sterman, *Transverse Momentum Distribution in Drell-Yan Pair and W and Z Boson Production*, *Nucl. Phys. B* **250** (1985) 199 [[INSPIRE](#)].
- [58] I.W. Stewart, F.J. Tackmann and W.J. Waalewijn, *Dissecting Soft Radiation with Factorization*, *Phys. Rev. Lett.* **114** (2015) 092001 [[arXiv:1405.6722](#)] [[INSPIRE](#)].
- [59] G. Lusterians, J.K.L. Michel, F.J. Tackmann and W.J. Waalewijn, *Joint two-dimensional resummation in q_T and 0-jettiness at NNLL*, *JHEP* **03** (2019) 124 [[arXiv:1901.03331](#)] [[INSPIRE](#)].
- [60] A. Banfi, G. Marchesini and G. Smye, *Away from jet energy flow*, *JHEP* **08** (2002) 006 [[hep-ph/0206076](#)] [[INSPIRE](#)].
- [61] H. Weigert, *Nonglobal jet evolution at finite N_c* , *Nucl. Phys. B* **685** (2004) 321 [[hep-ph/0312050](#)] [[INSPIRE](#)].
- [62] M.D. Schwartz and H.X. Zhu, *Nonglobal logarithms at three loops, four loops, five loops, and beyond*, *Phys. Rev. D* **90** (2014) 065004 [[arXiv:1403.4949](#)] [[INSPIRE](#)].
- [63] Y. Hagiwara, Y. Hatta and T. Ueda, *Hemisphere jet mass distribution at finite N_c* , *Phys. Lett. B* **756** (2016) 254 [[arXiv:1507.07641](#)] [[INSPIRE](#)].
- [64] S. Caron-Huot, *Resummation of non-global logarithms and the BFKL equation*, *JHEP* **03** (2018) 036 [[arXiv:1501.03754](#)] [[INSPIRE](#)].
- [65] T. Becher, M. Neubert, L. Rothen and D.Y. Shao, *Factorization and Resummation for Jet Processes*, *JHEP* **11** (2016) 019 [Erratum *ibid.* **05** (2017) 154] [[arXiv:1605.02737](#)] [[INSPIRE](#)].
- [66] J.-y. Chiu, F. Golf, R. Kelley and A.V. Manohar, *Electroweak Corrections in High Energy Processes using Effective Field Theory*, *Phys. Rev. D* **77** (2008) 053004 [[arXiv:0712.0396](#)] [[INSPIRE](#)].

- [67] T. Becher and M. Neubert, *Drell-Yan Production at Small q_T , Transverse Parton Distributions and the Collinear Anomaly*, *Eur. Phys. J. C* **71** (2011) 1665 [[arXiv:1007.4005](#)] [[INSPIRE](#)].
- [68] J.-y. Chiu, A. Jain, D. Neill and I.Z. Rothstein, *The Rapidity Renormalization Group*, *Phys. Rev. Lett.* **108** (2012) 151601 [[arXiv:1104.0881](#)] [[INSPIRE](#)].
- [69] J.-Y. Chiu, A. Jain, D. Neill and I.Z. Rothstein, *A Formalism for the Systematic Treatment of Rapidity Logarithms in Quantum Field Theory*, *JHEP* **05** (2012) 084 [[arXiv:1202.0814](#)] [[INSPIRE](#)].
- [70] T. Becher and G. Bell, *Analytic Regularization in Soft-Collinear Effective Theory*, *Phys. Lett. B* **713** (2012) 41 [[arXiv:1112.3907](#)] [[INSPIRE](#)].
- [71] M.G. Echevarria, I. Scimemi and A. Vladimirov, *Transverse momentum dependent fragmentation function at next-to-next-to-leading order*, *Phys. Rev. D* **93** (2016) 011502 [*Erratum ibid.* **94** (2016) 099904] [[arXiv:1509.06392](#)] [[INSPIRE](#)].
- [72] Y. Li, D. Neill and H.X. Zhu, *An exponential regulator for rapidity divergences*, *Nucl. Phys. B* **960** (2020) 115193 [[arXiv:1604.00392](#)] [[INSPIRE](#)].
- [73] S. Frixione, P. Nason and G. Ridolfi, *Problems in the resummation of soft gluon effects in the transverse momentum distributions of massive vector bosons in hadronic collisions*, *Nucl. Phys. B* **542** (1999) 311 [[hep-ph/9809367](#)] [[INSPIRE](#)].
- [74] R. Abbate, M. Fickinger, A.H. Hoang, V. Mateu and I.W. Stewart, *Thrust at N^3LL with Power Corrections and a Precision Global Fit for $\alpha_s(m_Z)$* , *Phys. Rev. D* **83** (2011) 074021 [[arXiv:1006.3080](#)] [[INSPIRE](#)].
- [75] Z. Ligeti, I.W. Stewart and F.J. Tackmann, *Treating the b quark distribution function with reliable uncertainties*, *Phys. Rev. D* **78** (2008) 114014 [[arXiv:0807.1926](#)] [[INSPIRE](#)].
- [76] A.V. Manohar, *Deep inelastic scattering as $x \rightarrow 1$ using soft collinear effective theory*, *Phys. Rev. D* **68** (2003) 114019 [[hep-ph/0309176](#)] [[INSPIRE](#)].
- [77] C.W. Bauer, C. Lee, A.V. Manohar and M.B. Wise, *Enhanced nonperturbative effects in Z decays to hadrons*, *Phys. Rev. D* **70** (2004) 034014 [[hep-ph/0309278](#)] [[INSPIRE](#)].
- [78] G.P. Korchemsky and A.V. Radyushkin, *Renormalization of the Wilson Loops Beyond the Leading Order*, *Nucl. Phys. B* **283** (1987) 342 [[INSPIRE](#)].
- [79] C.W. Bauer and A.V. Manohar, *Shape function effects in $B \rightarrow X_s \gamma$ and $B \rightarrow X_u \ell \bar{\nu}$ decays*, *Phys. Rev. D* **70** (2004) 034024 [[hep-ph/0312109](#)] [[INSPIRE](#)].
- [80] M.G. Echevarria, A. Idilbi and I. Scimemi, *Unified treatment of the QCD evolution of all (un-)polarized transverse momentum dependent functions: Collins function as a study case*, *Phys. Rev. D* **90** (2014) 014003 [[arXiv:1402.0869](#)] [[INSPIRE](#)].
- [81] R. Bain, Y. Makris and T. Mehen, *Transverse Momentum Dependent Fragmenting Jet Functions with Applications to Quarkonium Production*, *JHEP* **11** (2016) 144 [[arXiv:1610.06508](#)] [[INSPIRE](#)].
- [82] S.M. Aybat and T.C. Rogers, *TMD Parton Distribution and Fragmentation Functions with QCD Evolution*, *Phys. Rev. D* **83** (2011) 114042 [[arXiv:1101.5057](#)] [[INSPIRE](#)].
- [83] Z.-B. Kang, X. Liu, F. Ringer and H. Xing, *The transverse momentum distribution of hadrons within jets*, *JHEP* **11** (2017) 068 [[arXiv:1705.08443](#)] [[INSPIRE](#)].

- [84] Y.-T. Chien, R. Rahn, S. Schrijnder van Velzen, D.Y. Shao, W.J. Waalewijn and B. Wu, *Azimuthal angle for boson-jet production in the back-to-back limit*, [arXiv:2005.12279](#) [[INSPIRE](#)].
- [85] Z.-B. Kang, S. Mantry and J.-W. Qiu, *N-Jettiness as a Probe of Nuclear Dynamics*, *Phys. Rev. D* **86** (2012) 114011 [[arXiv:1204.5469](#)] [[INSPIRE](#)].
- [86] D. Kang, C. Lee and I.W. Stewart, *Using 1-Jettiness to Measure 2 Jets in DIS 3 Ways*, *Phys. Rev. D* **88** (2013) 054004 [[arXiv:1303.6952](#)] [[INSPIRE](#)].
- [87] V. Antonelli, M. Dasgupta and G.P. Salam, *Resummation of thrust distributions in DIS*, *JHEP* **02** (2000) 001 [[hep-ph/9912488](#)] [[INSPIRE](#)].
- [88] M. Dasgupta and G.P. Salam, *Resummed event shape variables in DIS*, *JHEP* **08** (2002) 032 [[hep-ph/0208073](#)] [[INSPIRE](#)].
- [89] M. Dasgupta and G.P. Salam, *Event shapes in e^+e^- annihilation and deep inelastic scattering*, *J. Phys. G* **30** (2004) R143 [[hep-ph/0312283](#)] [[INSPIRE](#)].
- [90] J.R. Gaunt and M. Stahlhofen, *The Fully-Differential Quark Beam Function at NNLO*, *JHEP* **12** (2014) 146 [[arXiv:1409.8281](#)] [[INSPIRE](#)].