



**UvA-DARE (Digital Academic Repository)**

**Constructing history, culture and inequality : the Betsileo in the extreme Southern Highlands of Madagascar**

Evers, S.

[Link to publication](#)

*Citation for published version (APA):*

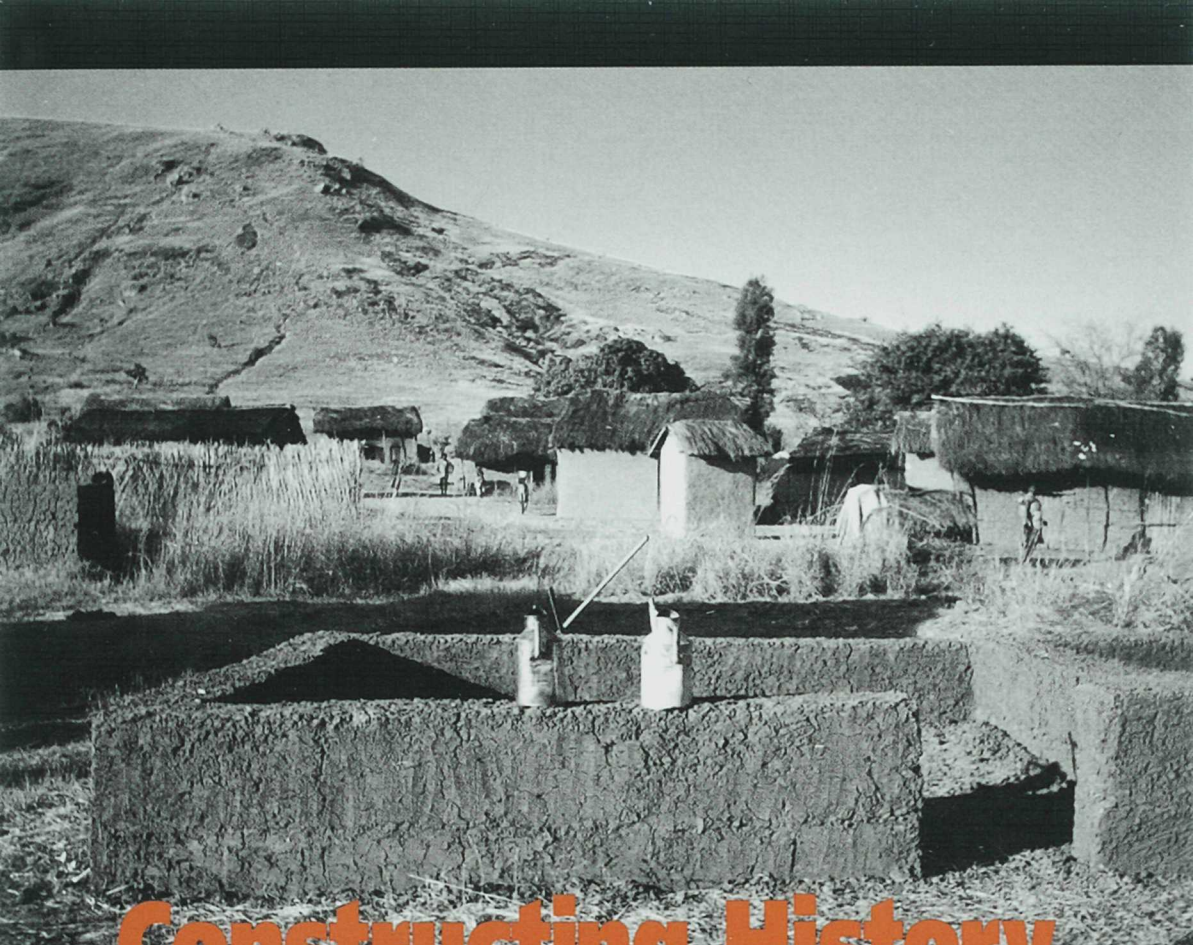
Evers, S. (2001). Constructing history, culture and inequality : the Betsileo in the extreme Southern Highlands of Madagascar

**General rights**

It is not permitted to download or to forward/distribute the text or part of it without the consent of the author(s) and/or copyright holder(s), other than for strictly personal, individual use, unless the work is under an open content license (like Creative Commons).

**Disclaimer/Complaints regulations**

If you believe that digital publication of certain material infringes any of your rights or (privacy) interests, please let the Library know, stating your reasons. In case of a legitimate complaint, the Library will make the material inaccessible and/or remove it from the website. Please Ask the Library: <http://uba.uva.nl/en/contact>, or a letter to: Library of the University of Amsterdam, Secretariat, Singel 425, 1012 WP Amsterdam, The Netherlands. You will be contacted as soon as possible.



**Constructing History,**  
*The Betsileo in the Extreme Southern  
Highlands of Madagascar*  
**Culture and Inequality:**

Sandra J.T.M. Evers