



UvA-DARE (Digital Academic Repository)

Differential effects of anticoagulants on tumor development of mouse cancer cell lines B16, K1735 and CT26 in lung

Niers, T.M.H.; Brüggemann, L.W.; Klerk, C.P.W.; Muller, F.J.M.; Buckle, T.; Reitsma, P.H.; Richel, D.J.; Spek, C.A.; van Tellingen, O.; van Noorden, C.J.F.

DOI

[10.1007/s10585-008-9227-6](https://doi.org/10.1007/s10585-008-9227-6)

Publication date

2009

Document Version

Final published version

Published in

Clinical & experimental metastasis

[Link to publication](#)

Citation for published version (APA):

Niers, T. M. H., Brüggemann, L. W., Klerk, C. P. W., Muller, F. J. M., Buckle, T., Reitsma, P. H., Richel, D. J., Spek, C. A., van Tellingen, O., & van Noorden, C. J. F. (2009). Differential effects of anticoagulants on tumor development of mouse cancer cell lines B16, K1735 and CT26 in lung. *Clinical & experimental metastasis*, 26(3), 171-178.
<https://doi.org/10.1007/s10585-008-9227-6>

General rights

It is not permitted to download or to forward/distribute the text or part of it without the consent of the author(s) and/or copyright holder(s), other than for strictly personal, individual use, unless the work is under an open content license (like Creative Commons).

Disclaimer/Complaints regulations

If you believe that digital publication of certain material infringes any of your rights or (privacy) interests, please let the Library know, stating your reasons. In case of a legitimate complaint, the Library will make the material inaccessible and/or remove it from the website. Please Ask the Library: <https://uba.uva.nl/en/contact>, or a letter to: Library of the University of Amsterdam, Secretariat, Singel 425, 1012 WP Amsterdam, The Netherlands. You will be contacted as soon as possible.

UvA-DARE is a service provided by the library of the University of Amsterdam (<https://dare.uva.nl>)

Differential effects of anticoagulants on tumor development of mouse cancer cell lines B16, K1735 and CT26 in lung

Tatjana M. H. Niers · Lois W. Brüggemann · Clara P. W. Klerk ·
Femke J. M. Muller · Tessa Buckle · Pieter H. Reitsma · Dick J. Richel ·
C. Arnold Spek · Olaf Van Tellingen · Cornelis J. F. Van Noorden

Received: 12 June 2008 / Accepted: 24 November 2008 / Published online: 10 December 2008
© The Author(s) 2008. This article is published with open access at Springerlink.com

Abstract Cancer progression is facilitated by blood coagulation. Anticoagulants, such as Hirudin and low molecular weight heparins (LMWHs), reduce metastasis mainly by inhibition of thrombin formation and L- and P-selectin-mediated cell-cell adhesion. It is unknown whether the effects are dependent on cancer cell type. The effects of anticoagulants on tumor development of K1735 and B16 melanoma cells and CT26 colon cancer cells were investigated in mouse lung. Tumor load was determined

noninvasively each week up to day 21 in all experiments using bioluminescence imaging. Effects of anticoagulants on tumor development of the three cell lines were correlated with the fibrin/fibrinogen content in the tumors, expression of tissue factor (TF), protease activated receptor (PAR)-1 and -4 and CD24, a ligand of L- and P-selectins. Hirudin inhibited tumor development of B16 cells in lungs completely but did not affect tumor growth of K1735 and CT26 cells. Low molecular weight heparin did not have an effect on K1735 melanoma tumor growth either. TF and PAR-4 expression was similar in the three cell lines. PAR-1 and CD24 were hardly expressed by K1735, whereas CT26 cells expressed low levels and B16 high levels of PAR-1 and CD24. Fibrin content of the tumors was not affected by LMWH. It is concluded that effects of anticoagulants are dependent on cancer cell type and are correlated with their CD24 and PAR-1 expression.

T. M. H. Niers · C. P. W. Klerk · D. J. Richel
Department of Medical Oncology, Academic Medical Center,
University of Amsterdam, Meibergdreef 9, 1105 AZ Amsterdam,
The Netherlands

T. M. H. Niers · C. P. W. Klerk · F. J. M. Muller ·
C. J. F. Van Noorden (✉)
Department of Cell Biology and Histology, Academic Medical
Center, University of Amsterdam, Meibergdreef 15,
1105 AZ Amsterdam, The Netherlands
e-mail: c.j.vannoorden@amc.uva.nl

L. W. Brüggemann · C. A. Spek
Center for Experimental and Molecular Medicine, Academic
Medical Center, University of Amsterdam, Meibergdreef 9,
1105 AZ Amsterdam, The Netherlands

C. P. W. Klerk
Department of Vascular Medicine, Academic Medical Center,
University of Amsterdam, Meibergdreef 9, 1105 AZ Amsterdam,
The Netherlands

T. Buckle · O. Van Tellingen
Department of Clinical Chemistry, Netherlands Cancer Institute,
Plesmanlaan 121, 1006 CX Amsterdam, The Netherlands

P. H. Reitsma
Eindhoven Laboratory for Experimental Vascular Medicine,
Leiden University Medical Center, 2333 ZA Leiden,
The Netherlands

Keywords B16 melanoma · CT26 colon carcinoma ·
K1735 melanoma · Hirudin ·
Low molecular weight heparin · Selectin · PAR

Abbreviations

LMWH	Low-molecular-weight heparin
TF	Tissue factor
PAR	Protease-activated receptor
TFPI	Tissue factor pathway inhibitor
FVL	Factor V Leiden
aXa	Anti-Xa
PBS	Phosphate-buffered saline
PE	Phycoerythrin
PEG	Polyethylene glycol
BLI	Bioluminescence
ROI	Region of interest

FACS Flow-activated cell sorter
SEM Standard error of the mean

Introduction

A frequent haematological complication in cancer patients is disordered coagulation. The association between cancer and venous thromboembolic events is well recognized [1, 2]. Cancer cells can produce activators of the coagulation cascade and thus potential beneficial effects of anticoagulants are investigated for prevention or treatment of cancer [3, 4]. Clinical trials evaluated the effects of low molecular weight heparins (LMWHs) on survival of cancer patients without thrombosis [5–9]. Overall, there was no difference in survival, but three studies [5, 7, 8] defined a priori a subgroup consisting of patients with a relatively good prognosis at enrolment. Patients in this defined subgroup had a significant survival benefit when treated with LMWHs. These clinical reports are supported by experimental *in vitro* and *in vivo* studies showing that spontaneous and induced metastasis is significantly inhibited by anticoagulants [3, 4].

However, mechanisms of the effects of anticoagulants on cancer progression are still not exactly known. Animal studies showed that different components of the coagulation system, such as tissue factor (TF) [10], factor Xa [11], thrombin [12] and fibrinogen [13] can promote tumor progression, whereas the TF pathway inhibitor (TFPI) inhibits tumor growth in mice [14]. The congenital coagulation disorder FV Leiden (FVL) promotes melanoma tumor development in mouse lung, whereas FVIII-deficient (haemophilic) mice are protected against melanoma tumor growth in lungs indicating a role for the coagulation process [15]. However, a lack of effects of FVL has been observed as well in colon cancer tumor development in mouse liver [16] indicating that the coagulation system is not effective in all organs. Moreover, not all anticoagulants are effective inhibitors of cancer progression [17–19].

The anticancer properties of anticoagulants appear to be mediated by various mechanism [3, 4] but blocking P- and L-selectins has major effects [17–20]. In the present study, we focussed on inhibition of thrombin formation and platelet-cancer cell complex formation by anticoagulants. These processes are closely related. Cancer cells often express TF on their surface which can trigger thrombin formation and procoagulant activity of platelets. Thrombin is the most potent activator of platelets via protease activated receptors (PARs) [21, 22]. PAR signalling induces upregulation of adhesion molecules on endothelial cells and thus binding of platelets via P-selectin. Cancer cells can also upregulate P-selectin expression on platelets and endothelial cells, whereas cancer cells can express P-

selectin ligands, such as CD24 and Sialyl Lewis x/a- on their plasma membrane [23]. Their interactions result in the formation of platelet-cancer cell complexes that favour survival of cancer cells in the circulation [20, 24–26] by protecting cancer cells against the immune system and mechanical stress. Anticoagulants, including LMWH and Hirudin, prevent binding of platelets to cancer cells [17, 20]. Furthermore, thrombin converts fibrinogen into fibrin. Fibrin depositions have been found in and around various types of tumors, providing scaffolding for angiogenesis and possibly protecting cancer cells against the host defence as well [27, 28; Klerk et al. submitted].

In the present study, we explored underlying mechanisms of the effects of anticoagulants on cancer by analysing the effects of Hirudin and LMWH on tumor development of three different cancer cell lines in mouse lungs. We also investigated the fibrin/fibrinogen content in tumors and expression of TF and adhesion molecules by the cancer cells.

Materials and methods

Cancer cell lines

Three mouse cancer cell lines expressing luciferase were used in experimental models of metastasis in mouse lungs, the B16 mouse melanoma cell line (American Type Culture Collection, Manassas, VA) [29], the K1735 mouse melanoma cell line (kindly provided by Dr. I.J. Fidler, MD Anderson Cancer Institute, Houston, TX), and the CT26 mouse colon carcinoma cell line (also kindly provided by Dr. I.J. Fidler) were used. Preparation of cell cultures, transfection with the luciferase gene and inoculation of the cells in the tail vein of mice have been described previously [30, 31].

TF activity

TF activity of the three cell lines was measured to test their ability to induce coagulation using a standard procoagulant activity assay (also known as the one-stage clotting assay or recalcification assay) [32]. Cancer cells were suspended in PBS at a concentration of 7.5×10^4 cells/ml and 75 μ l of the cell suspensions was added to 75 μ l mouse plasma (Sigma, St. Louis, MO) and incubated at 37°C for 2 min. Then, 100 μ l of a 25 mM calcium chloride solution was added and the clotting time was measured using a KC-10 coagulometer (Amelung, Lemgo, Germany).

Flow cytometry

Flow cytometric analysis of the three cancer cell lines was performed to determine the presence of various surface

proteins. Cancer cells were incubated in the absence of serum during 24 h before flow cytometric analysis. Cancer cells were centrifuged at 400 g for 5 min. Cells were washed twice with flow-activated cell sorter (FACS)-buffer (PBS supplemented with 0.5% bovine serum albumin, 0.01% NaN_3 , and 0.35 mM EDTA) and finally suspended in FACS buffer (4×10^6 cells/ml). For each analysis, at least 1×10^5 cells were analyzed using a FACS Calibur flow cytometer (Becton Dickinson, Mountain View, CA). Fc receptors were blocked with purified anti-mouse CD16/32 antibodies (dilution, 1:50; Fcy 111/11 receptor; Pharmingen, BD Biosciences, Breda, The Netherlands). Staining was performed using rat anti-mouse CD24 antibody coupled with phycoerythrin (PE) (dilution, 1:50; Pharmingen, BD Biosciences), goat anti-mouse PAR-4 antibody (dilution, 1:50; M-20 Santa Cruz Biotechnology, Heidelberg, Germany) and rabbit anti-mouse PAR-1 (dilution, 1:50; thrombin R; H-111 Santa Cruz Biotechnology). As secondary antibody anti-rabbit coupled with Alexa fluor 488 (dilution, 1:150; Molecular Probes, Eugene, OR) was used to detect PAR-1 expression and anti-goat coupled with FITC (dilution, 1:200; Dako) was used to detect PAR-4 expression. To correct for nonspecific staining; all analyses were also conducted with cells stained with the appropriate isotype control antibodies. Cancer cells were identified by forward and sideangle light scatter gating. Data are presented as the difference between mean fluorescence intensities of specifically stained and nonspecifically stained cells.

Animals

For all experiments, eight weeks-old Balb-/c nude mice with a body weight of 20–27 g were used (Netherlands Cancer Institute, Amsterdam, The Netherlands). Animals were maintained under constant environmental conditions with free access to food and water. All animal experiments were performed in agreement with the Animal Ethics Committee of the Netherlands Cancer Institute.

Lung colonization model

Thirty mice received 3×10^5 K1735 cells, twenty mice received 3×10^5 B16 cells and twenty mice received 3×10^5 CT26 cells into the tail vein. Half of the mice in each group received 10 mg/kg polyethylene glycol (PEG)-Hirudin (Abbott, Knoll, Ludwigshafen, Germany) subcutaneously before cancer cell inoculation. The other half of the mice received PBS subcutaneously before cancer cell inoculation. Mice were sacrificed at 21 days after cancer cell inoculation and lungs were harvested.

Furthermore, 15 mice received 3×10^5 K1735 cells into the tail vein. Ten mice received 600 anti-Xa (aXa) IU nadroparin (Sanofi-Synthelabo, Berlin, Germany)

intraperitoneally per kg body weight prior to cancer cell inoculation. The other mice received PBS intraperitoneally and served as controls. Mice were sacrificed at 21 days after cancer cell inoculation and lungs were harvested.

Bioluminescence imaging (BLI)

For all experiments, cancer cell load in lungs was measured at day 1, 7, 15 and 21 after administration of the cancer cells using noninvasive BLI as previously described [30, 31]. To generate BLI by luciferase, its substrate, luciferin (Xenogen, Alameda, CA) was given intraperitoneally to the mice (150 mg/kg body weight). Luciferase converts luciferin into oxyluciferin and the resulting BLI was imaged with the use of a highly sensitive cooled charge-coupled device camera in a lighttight chamber (IVIS Imaging System 100 series; Xenogen). The acquired images were analyzed with the software program Living Image^R 2.11 (Xenogen). The area of the lungs was selected as region of interest (ROI) for the quantification of BLI.

Histochemistry

Lungs were analyzed microscopically in order to determine whether LMWH altered fibrin/fibrinogen depositions in the tumors. Cryostat sections (6 μm thick) were cut at a cabinet temperature of -25°C using a motor-driven cryostat (Bright, Huntingdon, UK) and stored at -25°C until used. Cryostat sections were air dried for 60 min at room temp. Sections were fixed in 4% (v/v) formaldehyde in distilled water for 20 min and rinsed 3 times in PBS afterwards. Then, endogenous peroxidase was inhibited by incubating sections in 0.3% (v/v) H_2O_2 and 0.1% (w/v) NaN_3 in distilled water for 20 min at room temp. After rinsing 3 times in PBS, sections were incubated in PBS supplemented with 10% (v/v) normal rabbit serum (Dako, Glostrup, Denmark) for 15 min at room temp as blocking step. This incubation step and all following incubation steps with antibodies were performed in a humidified chamber. A goat monoclonal antibody against mouse fibrinogen that cross reacts with fibrin (Accurate Chemical and Scientific Corp, Westbury, NY) was used as primary antibody. The antibody was diluted 1:500 in PBS in the presence of 1% bovine serum albumin. Sections were incubated for 60 min at room temp. After rinsing 3 times in PBS, the secondary antibody, rabbit anti-goat immunoglobulin coupled to horseradish peroxidase (Dako) diluted 1:100 in PBS in combination with 0.2% (w/v) bovine serum albumin and 5% (v/v) normal mouse serum (Dako) was applied and sections were incubated for 60 min at room temp. Binding of secondary antibodies was visualized using a solution of 10 mM diaminobenzidine (Fluka, Buchs, Switzerland), 10 mM NaN_3 and 4% (v/v) H_2O_2 in 50 mM Tris-HCl

buffer, pH 7.6, for 10 min at room temp. Control incubations were performed in the absence of the primary antibody in the incubation medium. Subsequently, the sections were rinsed 3 times in distilled water and counterstained with haematoxylin ('Z' stain; Cellpath, Newton Powys, UK) for 5 s. After 10 min of rinsing in tap water, sections were mounted in glycerin-gelatin.

Statistical analysis

BLI data were compared using the Mann–Whitney U-test (unpaired, non-normally distributed groups). Values were given as median. *P* values <0.05 were considered to indicate significant differences.

Results

Characteristics of B16, K1735 and CT26 cells

Procoagulant TF activity of the three cancer cell lines was not significantly different (Fig. 1).

Fig. 2 shows that a distinct fraction of B16 cells was positive for PAR-1 and CD24, whereas a smaller fraction of CT26 cells was positive for PAR-1 and an even smaller fraction was moderately positive for CD24. K1735 cells were not positive for any of the adhesion molecules. PAR-4 was not expressed on any of the cell types.

BLI

The brightest BLI in the mice was found in the ROI, the lungs. BLI was measured weekly. Fig. 3 shows the

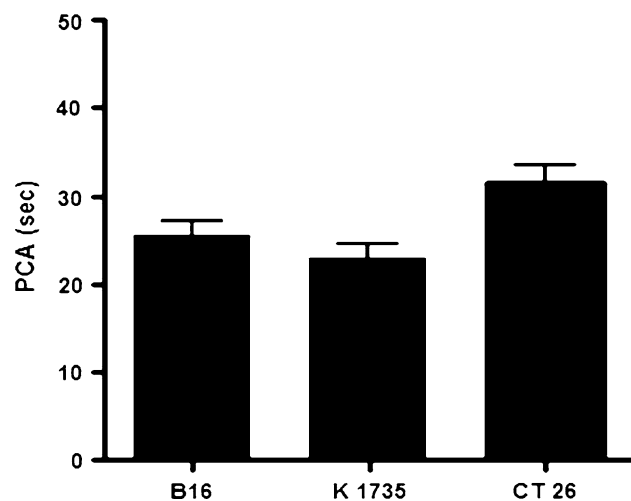


Fig. 1 Tissue factor (TF) activity in cultured cancer cells. TF activity was determined in 7.5×10^4 cells and expressed as procoagulant activity (PCA) in seconds (mean \pm SEM). PCA was inversely related to TF activity and was not significantly different in B16, K1735 or CT26 cells (*P*-values were 0.39, 0.14 and 0.08, respectively)

exponential increase in time of BLI values in the ROI. Some mice showed BLI in the tail vein at the site of cancer cell inoculation (Fig. 4) and in the abdominal area, indicating cancer spread to abdominal organs.

Effects of Hirudin

Hirudin strongly inhibited B16 melanoma tumor development in lungs, whereas tumor development of K1735 cells and CT26 cells was not affected (Table 1).

Effects of LMWH

K1735 melanoma cells induced tumors in lungs of mice irrespective of treatment. A bolus of LMWH before cancer cell inoculation did not affect the growth rate of the tumors in the lungs. This is confirmed by the bioluminescence values of all mice at day 21 after cancer cell inoculation (Fig. 5).

Fibrin/fibrinogen content

Fibrin/fibrinogen content in K1735 melanoma tumors in lungs was similar in LMWH-treated mice and control mice.

Discussion

Double-blind placebo-controlled randomized studies have shown a significant life-prolonging effect in cancer patients treated with LMWH [5–7, 9]. Therefore, it is important to optimize treatment of cancer patients with LMWH and/or possibly other anticoagulants and maximize these effects. Murine models of experimental metastasis have been used frequently to investigate the effect of anti-haemostatic agents on cancer metastasis. Although such artificial models do not encompass the entire metastatic process, they remain useful for 'proof-of-concept'-experiments, focusing on the haematogenous phase of tumor dissemination. Several studies have demonstrated significant efficacy of anticoagulants [3, 4].

In this study, we determined the effects of Hirudin on the development of K1735, B16 melanoma and CT26 colon cancer tumors in mouse lungs and the LMWH nadroparin on the development of K1735 melanoma tumors. Hirudin, a strong inhibitor of thrombin, was not able to inhibit tumor development of K1735 melanoma cells and CT26 colon cancer cells, whereas the inhibitory effect on tumor development of B16 cells was as potent as has been demonstrated before [12]. Moreover, LMWH did not have any inhibitory effect on tumor growth of K1735 melanoma cells either. The different effects of Hirudin cannot be explained by differences in thrombin or fibrin production

Fig. 2 FACS analysis of PAR-1, PAR-4 and CD24 expression. Fluorescence is shown on the X-axis on a logarithmic scale and positive cells on the Y-axis as percentage of the control peak. PAR-1 was found in significant fractions of B16 and CT26 cells but not K1735 cells, PAR-4 expression was not found in any of the three cell lines. CD24 was expressed on a large part of the B16 cells, a small fraction of CT26 cells and not on K1735 cells. Grey areas represent control cells; black areas represent positive cells

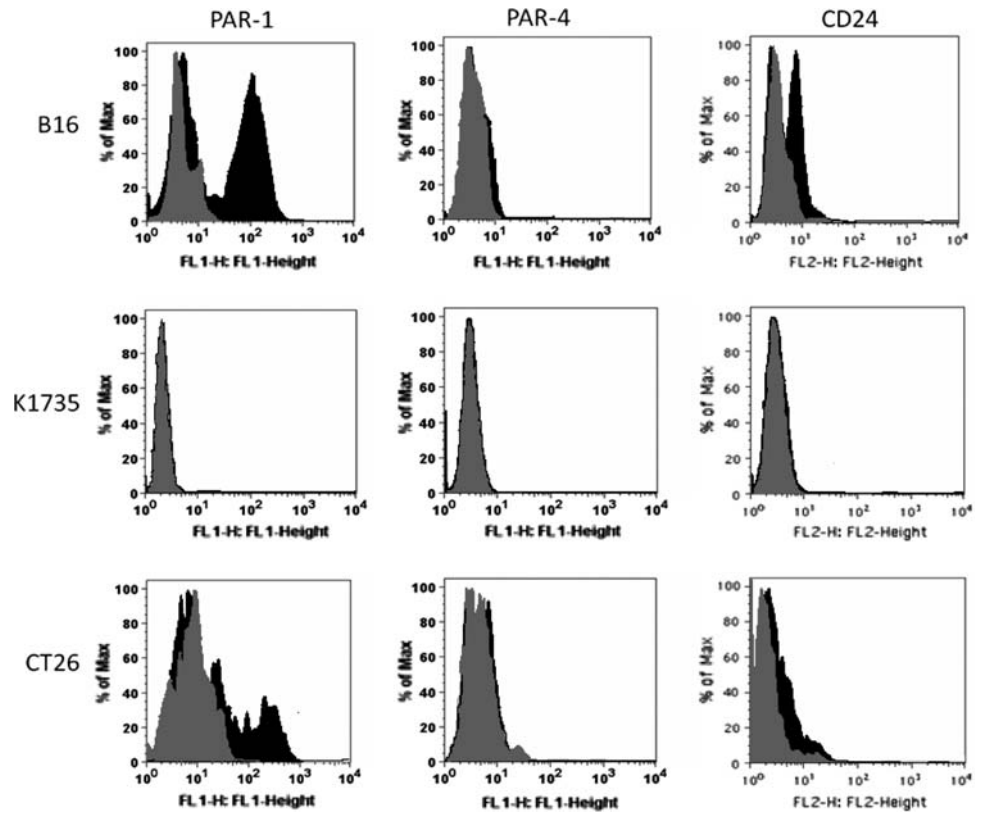
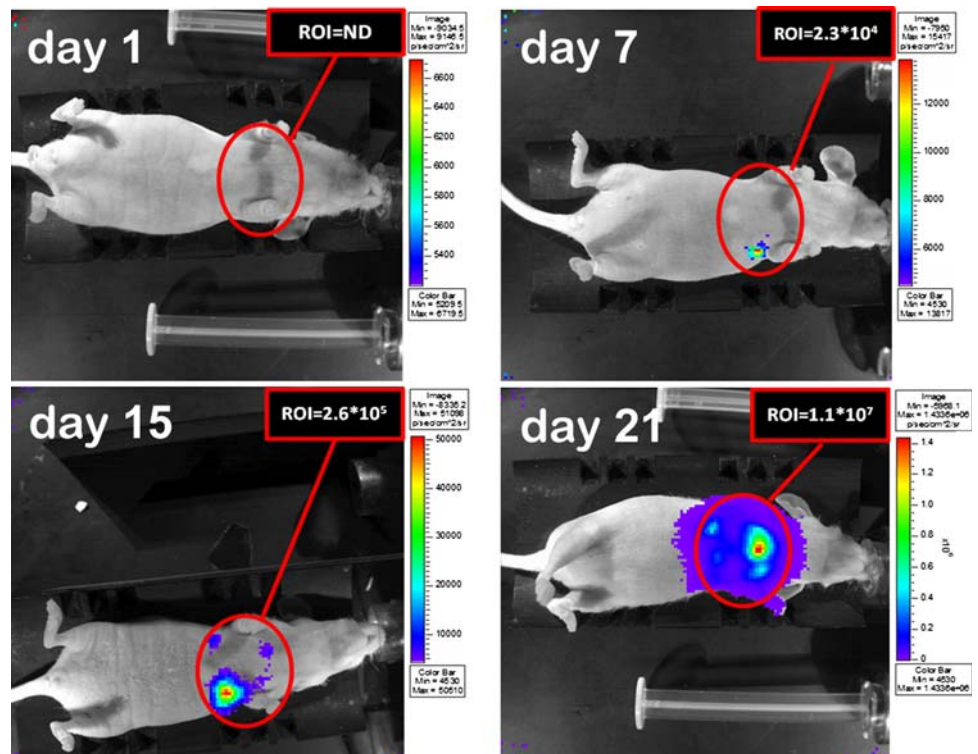


Fig. 3 Noninvasive bioluminescence imaging of an individual mouse on days 1, 7, 15 and 21 after intravenous administration of B16 melanoma cells. The bioluminescence signal as a measure of cancer cell load in the region of interest (ROI) increased from below the detection limit (ND) on day 1 to 0.23×10^5 , 2.6×10^5 and 110×10^5 photons/s at days 7, 15 and 21, respectively



because the TF activity was comparable in the three cancer cell lines. These findings indicate that mechanisms are involved other than the coagulation cascade.

Thrombin binds PAR-1 and mediates increased invasiveness and metastatic potential of cancer cells [33–35] and enhanced cancer cell adhesion to platelets [36–38],

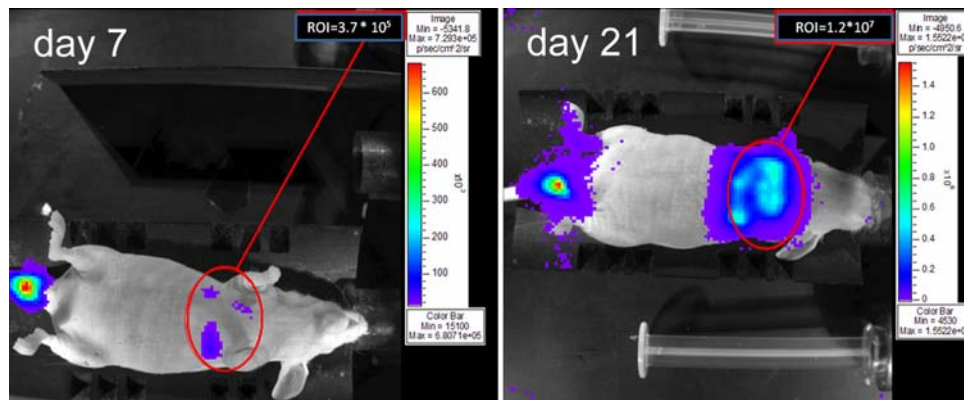


Fig. 4 Noninvasive bioluminescence imaging in an individual mouse on days 7 and 21 after intravenous administration of luciferase-expressing B16 melanoma cells into the tail vein. The mouse shows bioluminescence in the tail indicating the presence of cells at the site

of cancer cell inoculation. The region of interest (ROI) for bioluminescence measurements is given in red, showing a cancer cell load of 3.7×10^5 and 120×10^5 photons/s, at days 7 and 21, respectively

Table 1 Bioluminescence in mice at day 21 after B16, K1735 and CT26 cancer cell inoculation

Cell line	Hirudin	No Hirudin	<i>P</i> -value
B16	0	200×10^5 (0.73×10^5 – 270×10^5)	0.04
K1735	700×10^5 (73×10^5 – 1500×10^5)	760×10^5 (190×10^5 – 930×10^5)	0.98
CT26	1.4×10^5 (1.2×10^5 – 1.8×10^5)	1.3×10^5 (0.76×10^4 – 2.5×10^5)	0.36

Bioluminescence values are given as median number of photons/s in the region of interest (ROI) with the interquartile range in between brackets as shown in Figs. 3 and 4

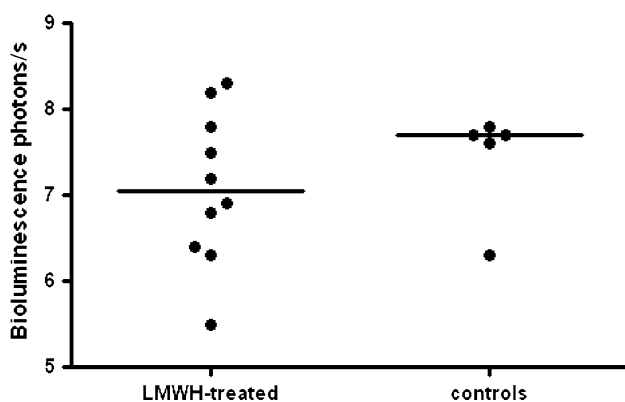


Fig. 5 Bioluminescence in lungs of mice on day 21 after K1735 melanoma cell inoculation in the tail vein. No significant difference is found ($P = 0.46$) between LMWH-treated mice and control mice (bars represent median)

endothelial cells [39], fibronectin and Von Willebrand factor [12, 37]. Inhibition of thrombin by Hirudin may switch off PAR-1 signalling resulting in decreased tumor growth. Indeed, tumor development of B16 melanoma cells was affected by Hirudin and these cells expressed PAR-1 on their surface whereas K1735 melanoma cells did not.

On the other hand, a small fraction of CT26 cells also expressed PAR-1 whereas Hirudin did not have an effect on tumor development of this cell line.

We also investigated the relevance of PAR-4 expression. The role of PAR-4 in cancer is not known, but its expression was upregulated in prostate cancer [40] suggesting that PAR-4 is involved as well. However, none of the three cell lines that we tested expressed PAR-4, indicating that the antitumor effects of Hirudin are not depending on this receptor.

Finally, the difference in the effects of Hirudin on tumor development of the cancer cell lines may be related with adherence to platelets via P- and L-selectin, to protect the cancer cells against shear stress and the immune system. Importantly, both platelet-cancer cell aggregation and experimental metastasis of human cancer cells were significantly inhibited in P-selectin-deficient mice [41, 42]. Previous reports indicate that CD24 takes part in metastasis as a ligand of P-selectin. Expression of CD24 as ligand for platelet binding is upregulated by thrombin, indicating that direct inhibition of thrombin may prevent binding of platelets to cancer cells, rendering the cancer cells vulnerable in the circulation [20, 43, 44]. CD24 expression

was found on B16 cells, in low levels on a small fraction of CT26 cells and it was absent on K1735 melanoma cells. So, the effects of Hirudin on tumor development of B16 melanoma cells in mouse lung can also be explained by inhibition of CD24.

It is likely that all three cell types have been arrested mechanically in the capillaries due to size restriction as was reported by Mook et al. for colon cancer cells in rat liver [45]. Such a process cannot be inhibited by Hirudin. Therefore, it is unlikely that Hirudin has affected interactions between cancer cells and endothelial cells in the lung capillaries.

In summary, the results of our experiments indicate that anticoagulants have their inhibiting effects on tumor development of specific cancer cell types. In our model, anticoagulants affect B16 melanoma but not K1735 melanoma and CT26 colon carcinoma tumor development in lungs. K1735 melanoma and CT26 colon carcinoma cell lines must be independent of thrombin activation, making them insensitive for Hirudin treatment. The B16 melanoma cell line requires a Hirudin target for survival, such as selectin-mediated adhesion and may be the most appropriate murine tumor model for research on the effect of coagulation on cancer.

Acknowledgments We like to thank Mrs. D. Lopes Barreto from the Department of Clinical Chemistry of the Netherlands Cancer Institute and Dr. R.D. Liu from the Center for Experimental and Molecular Medicine of the Academic Medical Center for their excellent technical assistance and Ms. T.M.S. Pierik for the careful preparation of the manuscript.

Open Access This article is distributed under the terms of the Creative Commons Attribution Noncommercial License which permits any noncommercial use, distribution, and reproduction in any medium, provided the original author(s) and source are credited.

References

- Büller HR, Van Doornmaal FF, Van Sluis GL et al (2007) Cancer and thrombosis: from molecular mechanisms to clinical presentations. *J Thromb Haemost* 5(suppl 1):246–254. doi:10.1111/j.1538-7836.2007.02497.x
- Blom JW, Doggen CJM, Osanto S et al (2005) Malignancies, prothrombotic mutations, and the risk of venous thrombosis. *J Am Med Assoc* 293:715–722. doi:10.1001/jama.293.6.715
- Niers TM, Klerk CP, Dinisio M et al (2007) Mechanisms of heparin induced anti-cancer activity in experimental cancer models. *Crit Rev Oncol/Hematol* 61:195–207. doi:10.1016/j.critrevonc.2006.07.007
- Smorenburg SM, Van Noorden CJ (2001) The complex effects of heparins on cancer progression and metastasis in experimental studies. *Pharmacol Rev* 53:93–105
- Altinbas M, Coskun HS, Er O et al (2004) A randomized clinical trial of combination chemotherapy with and without low-molecular-weight heparin in small cell lung cancer. *J Thromb Haemost* 2:1266–1271. doi:10.1111/j.1538-7836.2004.00871.x
- Kakkar AK, Levine MN, Kadziola Z et al (2004) Low molecular weight heparin, therapy with dalteparin, and survival in advanced cancer: the fragmin advanced malignancy outcome study (FAMOUS). *J Clin Oncol* 22:1944–1948. doi:10.1200/JCO.2004.10.002
- Klerk CP, Smorenburg SM, Otten HM et al (2005) The effect of low molecular weight heparin on survival in patients with advanced malignancy. *J Clin Oncol* 23:2130–2135. doi:10.1200/JCO.2005.03.134
- Lebeau B, Chastang C, Brechot JM et al (1994) Subcutaneous heparin treatment increases survival in small cell lung cancer. “Petites Cellules” Group. *Cancer* 74:38–45. doi:10.1002/1097-0142(19940701)74:1<38::AID-CNCR2820740108>3.0.CO;2-E
- Lee AY, Levine MN, Baker RI et al (2003) Low-molecular-weight heparin versus a coumarin for the prevention of recurrent venous thromboembolism in patients with cancer. *The New Engl J Med* 349:146–153. doi:10.1056/NEJMoa025313
- Hembrough TA, Swartz GM, Papatianassiu A et al (2003) Tissue factor/factor VIIa inhibitors block angiogenesis and tumor growth through a nonhemostatic mechanism. *Cancer Res* 63:2997–3000
- Banke IJ, Arlt MJ, Mueller MM et al (2005) Effective inhibition of experimental metastasis and prolongation of survival in mice by a potent factor Xa-specific synthetic serine protease inhibitor with weak anticoagulant activity. *Thromb Haemost* 94:1084–1093
- Hu L, Lee M, Campbell W et al (2004) Role of endogenous thrombin in tumor implantation, seeding, and spontaneous metastasis. *Blood* 104:2746–2751. doi:10.1182/blood-2004-03-1047
- Palumbo JS, Kombrinck KW, Drew AF et al (2000) Fibrinogen is an important determinant of the metastatic potential of circulating tumor cells. *Blood* 96:3302–3309
- Broze GJ Jr (1995) Tissue factor pathway inhibitor and the revised theory of coagulation. *Ann Rev Med* 46:103–112. doi:10.1146/annurev.med.46.1.103
- Brüggemann LW, Versteeg HH, Niers TM et al (2008) Experimental melanoma metastasis in lungs of mice with congenital coagulation disorders. *J Cell Mol Med* (PMID: 18363839)
- Klerk CP, Smorenburg SM, Spek CA et al (2007) Colon cancer metastasis in mouse liver is not affected by hypercoagulability due to Factor V Leiden mutation. *J Cell Mol Med* 11:561–568. doi:10.1111/j.1582-4934.2007.00046.x
- Stevenson JL, Choi SH, Varki A (2005) Differential metastasis inhibition by clinically relevant levels of heparins—correlation with selectin inhibition, not antithrombotic activity. *Clin Cancer Res* 11:7003–7011. doi:10.1158/1078-0432.CCR-05-1131
- Ludwig RJ, Alban S, Bistrrian R, Boehncke WH, Kaufmann R, Henschler R, Gille J (2006) The ability of different forms of heparins to suppress P-selectin function in vitro correlates to their inhibitory capacity on bloodborne metastasis in vivo. *Thromb Haemost* 95:535–540
- Stevenson JL, Varki A, Borsig L (2007) Heparin attenuates metastasis mainly due to inhibition of P- and L-selectin, but non-anticoagulant heparins can have additional effects. *Thromb Res* 120(suppl 2):S107–S111. doi:10.1016/S0049-3848(07)70138-X
- Borsig L, Wong R, Feramisco J et al (2001) Heparin and cancer revisited: mechanistic connections involving platelets, P-selectin, carcinoma mucins, and tumor metastasis. *Proc Natl Acad Sci USA* 98:3352–3357. doi:10.1073/pnas.061615598
- Chung AW, Jurasz P, Hollenberg MD et al (2002) Mechanisms of action of proteinase-activated receptor agonists on human platelets. *Br J Pharmacol* 135:1123–1132. doi:10.1038/sj.bjp.0704559
- Kahn ML, Nakanishi-Matsui M, Shapiro MJ et al (1999) Protease-activated receptors 1 and 4 mediate activation of human platelets by thrombin. *J Clin Invest* 103:879–887. doi:10.1172/JCI6042

23. Huo Y, Schober A, Forlow SB et al (2003) Circulating activated platelets exacerbate atherosclerosis in mice deficient in apolipoprotein E. *Nat Med* 9:61–67. doi:[10.1038/nm810](https://doi.org/10.1038/nm810)
24. Bastida E, Escolar G, Ordinas A et al (1986) Morphometric evaluation of thrombogenesis by microvesicles from human tumor cell lines with thrombin-dependent (U87MG) and adenosine diphosphate-dependent (SKNMC) platelet-activating mechanisms. *J Lab Clin Med* 108:622–627
25. Esumi N, Todo S, Imashuku S (1987) Platelet aggregating activity mediated by thrombin generation in the NCG human neuroblastoma cell line. *Cancer Res* 47:2129–2135
26. Heinmoller E, Schropp T, Kisker O et al (1995) Tumor cell-induced platelet aggregation in vitro by human pancreatic cancer cell lines. *Scand J Gastroenterol* 30:1008–1016. doi:[10.3109/00365529509096346](https://doi.org/10.3109/00365529509096346)
27. Collen A, Smorenburg SM, Peters E et al (2000) Unfractionated and low molecular weight heparin affect fibrin structure and angiogenesis in vitro. *Cancer Res* 60:6196–6200
28. Dvorak HF, Senger DR, Dvorak AM (1983) Fibrin as a component of the tumor stroma: origins and biological significance. *Cancer Metastasis Rev* 2:41–73. doi:[10.1007/BF00046905](https://doi.org/10.1007/BF00046905)
29. Fidler IJ, Kripke ML (1977) Metastasis results from preexisting variant cells within a malignant tumor. *Science* 197:893–895. doi:[10.1126/science.887927](https://doi.org/10.1126/science.887927)
30. Klerk CP, Overmeer RM, Niers TM et al (2007) Validity of bioluminescence measurements for noninvasive in vivo imaging of tumor load in small animals. *BioTechniques* 43(Suppl):7–13. doi:[10.2144/000112515](https://doi.org/10.2144/000112515)
31. Kemper EM, Leenders W, Kusters B et al (2006) Development of luciferase tagged brain tumour models in mice for chemotherapy intervention studies. *Eur J Cancer* 42:3294–3303. doi:[10.1016/j.ejca.2006.07.013](https://doi.org/10.1016/j.ejca.2006.07.013)
32. Niemetz J (1972) Coagulant activity of leukocytes. Tissue factor activity. *J Clin Invest* 51:307–313. doi:[10.1172/JCI106815](https://doi.org/10.1172/JCI106815)
33. Even-Ram S, Uziely B, Cohen P et al (1998) Thrombin receptor overexpression in malignant and physiological invasion processes. *Nat Med* 4:909–914. doi:[10.1038/nm0898-909](https://doi.org/10.1038/nm0898-909)
34. Massi D, Naldini A, Ardinghi C et al (2005) Expression of protease-activated receptors 1 and 2 in melanocytic nevi and malignant melanoma. *Hum Pathol* 36:676–685. doi:[10.1016/j.humpath.2005.04.008](https://doi.org/10.1016/j.humpath.2005.04.008)
35. Yin YJ, Salah Z, Grisaru-Granovsky S et al (2003) Human protease-activated receptor 1 expression in malignant epithelia: a role in invasiveness. *Arterioscler Thromb Vasc Biol* 23:940–944. doi:[10.1161/01.ATV.0000066878.27340.22](https://doi.org/10.1161/01.ATV.0000066878.27340.22)
36. Nierodzik ML, Plotkin A, Kajumo F et al (1991) Thrombin stimulates tumor-platelet adhesion in vitro and metastasis in vivo. *J Clin Invest* 87:229–236. doi:[10.1172/JCI114976](https://doi.org/10.1172/JCI114976)
37. Nierodzik ML, Kajumo F, Karpatkin S (1992) Effect of thrombin treatment of tumor cells on adhesion of tumor cells to platelets in vitro and tumor metastasis in vivo. *Cancer Res* 52:3267–3272
38. Wojtukiewicz MZ, Tang DG, Nelson KK et al (1992) Thrombin enhances tumor cell adhesive and metastatic properties via increased alpha IIb beta 3 expression on the cell surface. *Thromb Res* 68:233–245. doi:[10.1016/0049-3848\(92\)90081-K](https://doi.org/10.1016/0049-3848(92)90081-K)
39. Klepfish A, Greco MA, Karpatkin S (1993) Thrombin stimulates melanoma tumor-cell binding to endothelial cells and subendothelial matrix. *Int J Cancer* 53:978–982
40. Black PC, Mize GJ, Karlin P et al (2007) Overexpression of protease-activated receptors-1, -2, and -4 (PAR-1, -2, and -4) in prostate cancer. *Prostate* 67:743–756. doi:[10.1002/pros.20503](https://doi.org/10.1002/pros.20503)
41. Kim YJ, Borsig L, Varki NM et al (1998) P-selectin deficiency attenuates tumor growth and metastasis. *Proc Natl Acad Sci USA* 95:9325–9330. doi:[10.1073/pnas.95.16.9325](https://doi.org/10.1073/pnas.95.16.9325)
42. Ludwig RJ, Boehme B, Podda M et al (2004) Endothelial P-selectin as a target of heparin action in experimental melanoma lung metastasis. *Cancer Res* 64:2743–2750. doi:[10.1158/0008-5472.CAN-03-1054](https://doi.org/10.1158/0008-5472.CAN-03-1054)
43. Koenig A, Norgard-Sumnicht K, Linhardt R et al (1998) Differential interactions of heparin and heparan sulfate glycosaminoglycans with the selectins. Implications for the use of unfractionated and low molecular weight heparins as therapeutic agents. *J Clin Invest* 101:877–889. doi:[10.1172/JCI1509](https://doi.org/10.1172/JCI1509)
44. Nelson RM, Ceconi O, Roberts WG et al (1993) Heparin oligosaccharides bind L- and P-selectin and inhibit acute inflammation. *Blood* 82:3253–3258
45. Mook OR, Van Marle J, Vreeling-Sindelarova H et al (2003) Visualization of early events in tumor formation of eGFP-transfected rat colon cancer cells in liver. *Hepatology* 38:295–304. doi:[10.1053/jhep.2003.50297](https://doi.org/10.1053/jhep.2003.50297)