

Supplementary Data to the paper entitled:

Analytical research of pesticide biomarkers in wastewater with application to study spatial differences in human exposure

Marina Campos-Mañas^{1,§}, David Fabregat-Safont^{1,2,§}, Félix Hernández¹, Eva de Rijke³, Pim de Voogt³, Annemarie van Wezel³, Lubertus Bijlsma^{1,3,*}

¹ Environmental and Public Health Analytical Chemistry, Research Institute for Pesticides and Water, University Jaume I, Castellón, Spain

² Applied Metabolomics Research Laboratory, IMIM-Hospital del Mar Medical Research Institute, 88 Doctor Aiguader, 08003 Barcelona, Spain

³ Institute for Biodiversity and Ecosystem Dynamics (IBED), University of Amsterdam, the Netherlands

[§] co-first authors

* Corresponding author:

Lubertus Bijlsma (ORCID: 0000-0001-7005-8775) E-mail: bijlsma@uji.es, Tel: +34 964 38 7382

This document provides more detailed information to the main paper mentioned above.

The following information is included:

Content		Page
Table S1	Matrix effect observed in the direct injection method applied to five different influent wastewater samples.	2
Table S2	Recovery and RSD of the compounds in Milli-Q spiked water using different SPE cartridges (n=3).	2
Figure S1	Modelled 3,4-DCA (green) and 3,4-DCA-d2 (purple) continuum mass spectra, focusing on isotope pattern.	2

Table S-1. Matrix effect observed in the DI method applied to five different IWW.

Compound	Matrix effect (%) at 100 ng L ⁻¹ (no ILIS correction)					
	IWW 1	IWW 2	IWW 3	IWW 4	IWW 5	Mean (RSD)
N-DMA	-68	-50	-59	-46	-59	-56 (6)
TEB-OH	-44	-16	-21	-30	-42	-31 (13)
ASU	-92	-78	-90	-93	-93	-89 (7)
6-CN	-80	-51	-67	-71	-74	-68 (11)
Boscalid-OH	-54	-3	-44	-58	-64	-37 (28)

Table S-2. Recovery and RSD of the compounds in Milli-Q spiked water using different SPE cartridges (n=3).

Compound	Recovery % (RSD) (100 ng L ⁻¹)			
	Oasis HLB	Strata X	Oasis MAX	Oasis MCX
2,6-EA	89 (4)	5 (33)	85 (11)	90 (43)
3,4-DCA	115 (1)	46 (13)	11(4)	1 (63)
DES	99 (2)	5 (2)	17 (3)	-
3-PBA	97 (4)	135 (12)	7 (21)	21 (24)
HCBA	63 (5)	63 (6)	22 (22)	11 (15)
4-HSA	95 (6)	67 (4)	-	3 (60)

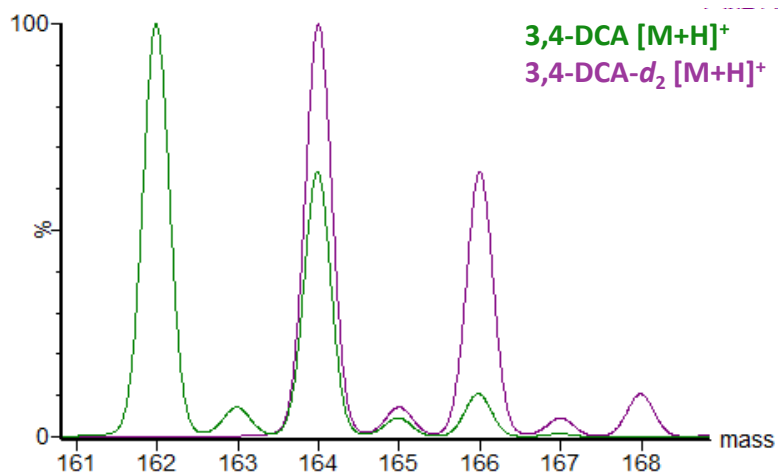


Figure S1: Modelled 3,4-DCA (green) and 3,4-DCA-d₂ (purple) continuum mass spectra, focusing on isotope pattern.