

# Quantifying agent impacts on contact sequences in social interactions

## Supplementary Materials

Mark M. Dekker<sup>1,2,\*</sup>, Tessa F. Blanken<sup>3</sup>, Fabian Dablander<sup>3</sup>, Jiamin Ou<sup>1,4</sup>, Denny Borsboom<sup>3</sup>, and Debabrata Panja<sup>1,2</sup>

<sup>1</sup>Department of Information and Computing Sciences, Utrecht University, Princetonplein 5, 3584 CC Utrecht, The Netherlands

<sup>2</sup>Centre for Complex Systems Studies, Utrecht University, Minnaertgebouw, Leuvenlaan 4, 3584 CE Utrecht, The Netherlands

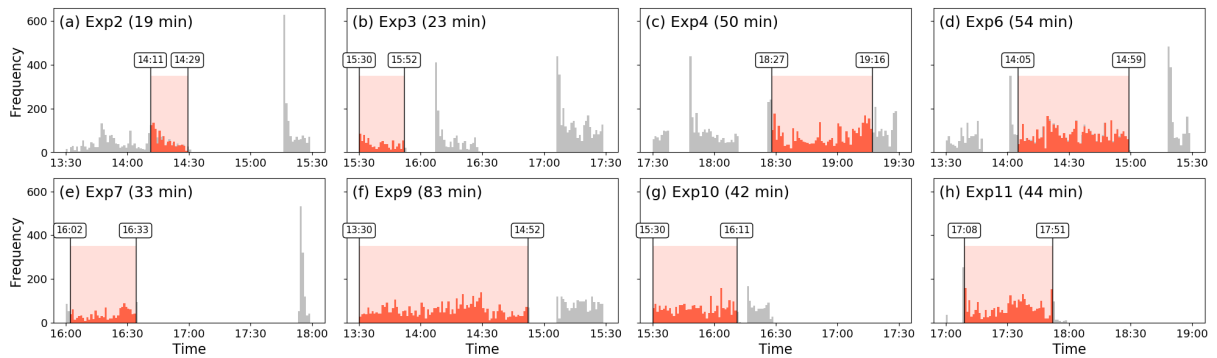
<sup>3</sup>Department of Psychological Methods, University of Amsterdam, Nieuwe Achtergracht 129-B, 1018 VZ Amsterdam, The Netherlands

<sup>4</sup>Department of Sociology, Utrecht University, Padualaan 14, 3584 CH Utrecht, the Netherlands

\*m.m.dekker@uu.nl

December 15, 2021

## A Supplementary Plots



**Figure A.1:** Histograms of the time stamps of events across the eight experiments. In red, the filtered windows used in this paper are highlighted.

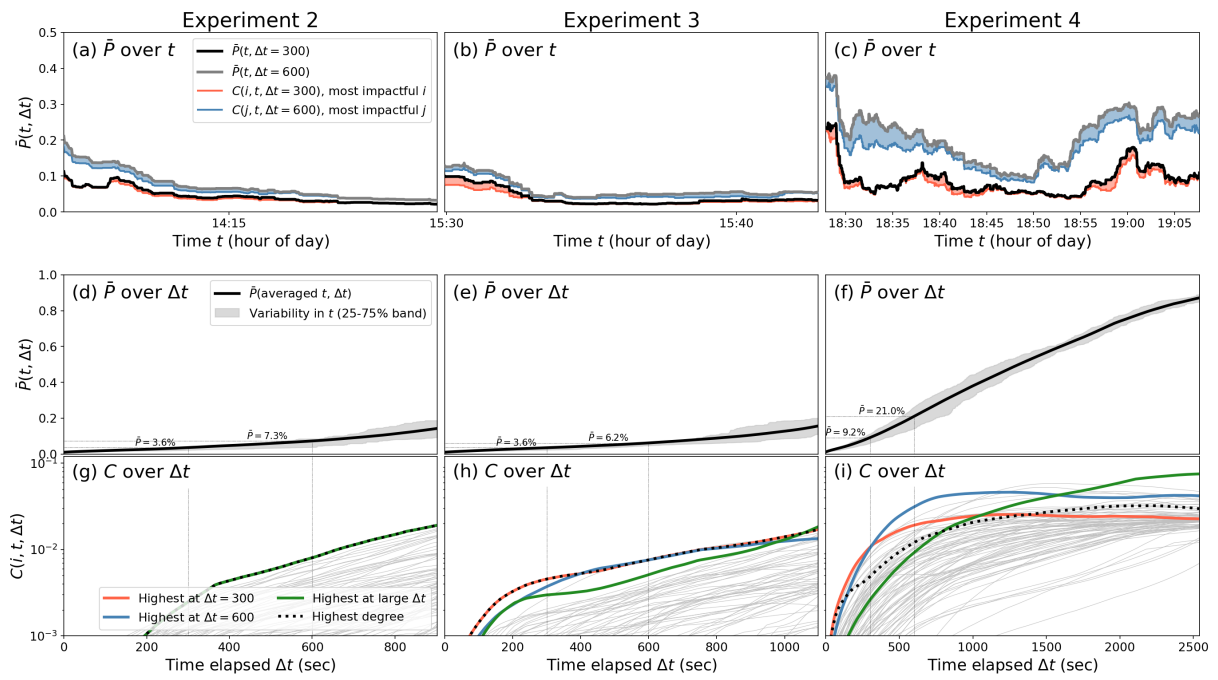


Figure A.2: Same as Fig. 3 in the main text, but for experiments 2, 3 and 4.